

New Design Car-park Series LED Street light



Features

- Power Factor: ≥ 0.95
- LED Chip: Philips
- CRI: $Ra \geq 70$
- 130lm/w or 150lm/w
- DLC Premium
- Material: Aluminum alloy + PC optics lens
- Standard color: dark bronze or black.
- Working Temperature: $-40^{\circ}\text{F} \sim 122^{\circ}\text{F}$
- Lifespan: > 54000 hours (@ $T_c = 176^{\circ}\text{F}$)
- Total Harmonic Distortio: 10.17%

Application

Parking lots , plaza lighting ,shopping mall, garden, roadway ,site & area lighting and general lighting applications.

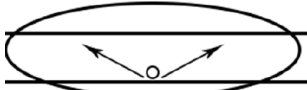
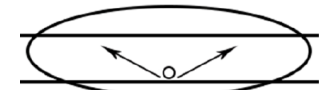
Ordering Information

Model	Wattage	CCT	Lumen	Input Voltage	G.W	Carton size
SBSL-W030	30watt	5000K	3,900lm	100-277vac	4.4KG	555*335*110mm
SBSL-W050	50watt	5000K	6,500lm	100-277vac	4.6KG	555*335*110mm
SBSL-W100	100watt	5000K	1,3000lm	100-277V/180-480Vac	6.4KG	615*395*110mm
SBSL-W150	150watt	5000K	1,9500lm	100-277V/180-480Vac	6.5 KG	615*395*110mm
SBSL-W200	200watt	5000K	26,000lm	100-277V/180-480Vac	10.3 KG	820*400*135mm
SBSL-W240	240watt	5000K	31,200lm	100-277V/180-480Vac	10.8 KG	820*400*135mm
SBSL-W300	300watt	5000K	39,000lm	100-277V/180-480Vac	11.5 KG	820*400*135mm

Typell

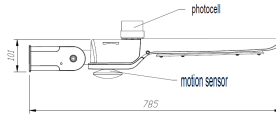
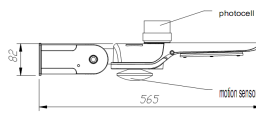
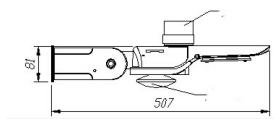
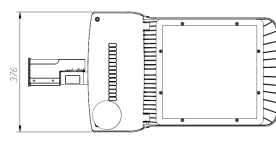
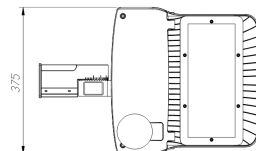
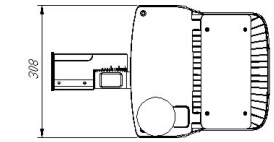
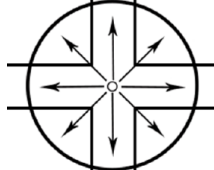
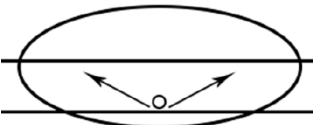
Typelll

Dimension



TypeIV

Type V



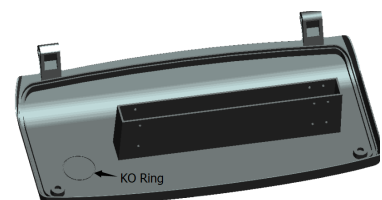
There are "knock out " for both photocell sensor (on the top) and motion sensor (at bottom) . The lights can come with motion sensor and photocell or customers can add photocell or motion sensor by themselves as requested . With motion sensor , the lights can dim to 10% ,20% and 30% or be turned off if no movement detected after hold-time . The motion sensor can be reset by a remote controller.



Remote controller



Photocell Available



Motion sensor Available by Special Request