

100% manufacturer, more than 10 years of experience in LED light production.
 We aim to offer perfect products and best service and we believe vitality of an enterprise depends on quality of products
 We offer 5 years warranty with reliable and high-performance LED lights
 We care and will take care of every inquiry, feedback and complaint of customers
 We value customers as partners, and we develop and pursuit profits together

Product Features

1. Innovative design led flood light ,led modular Light
2. High efficacy up to > 150lm/W
3. 0/1-10v Dimmable, DALI, ZigBee, PLC Dimmable system
4. Compact size with light weight
5. 5-7 years warranty
6. Easy installation
7. Competitive price based on the similar quality
8. Surge Protection Devices (SPDs) 10KV/20KV Optional

MODEL NO: MGM-500W

LED QTY: 2x94PCS (5050)
 NW:≈13.25kg
 Packing Type: 1 unit(s)/ctn
 Packing Dimension: 400*630*215mm
 GW: ≈17.65kg 1 unit(s)/ctn



LED By: **LUMILEDS**

Powered By: 



Protection Grade
Reaches IP67



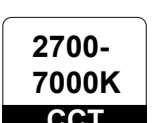
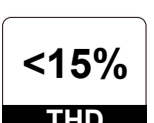
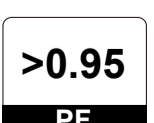
Anti-Collision
Level



17 Anti-Hurricane
Level



Adjustable
270° Angle



Working Temperature: -40-50°C

Working Humidity: 10%~95%RH

Best Working Temperature: -20°C~+30°C

Storage Temperature: -40°C~+80°C

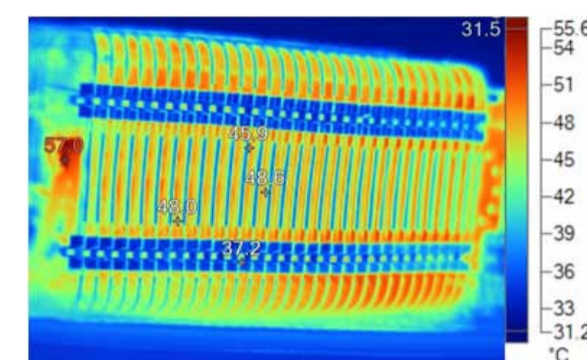
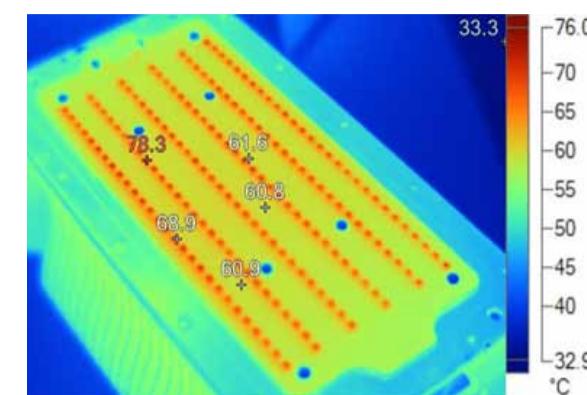
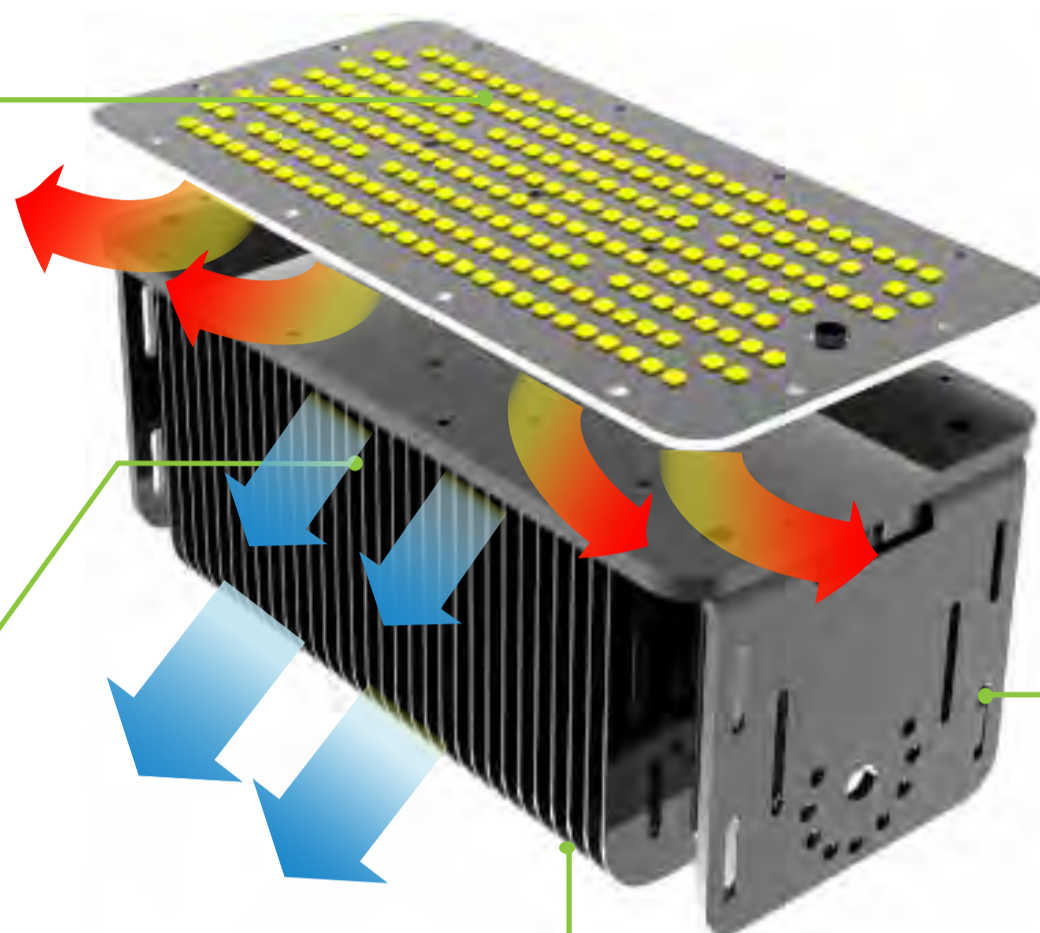
INCOMPARABLE HEAT-DISSIPATE ENGINE

Adopt heat pine rivet and fins technology, this incomparable heat-dissipate engine efficiently transfers heat from the light source to the large area of fins through, lower temperature of light source rapidly, hence longer lifespan.

THERMAL CONDUCTIVE BOARD



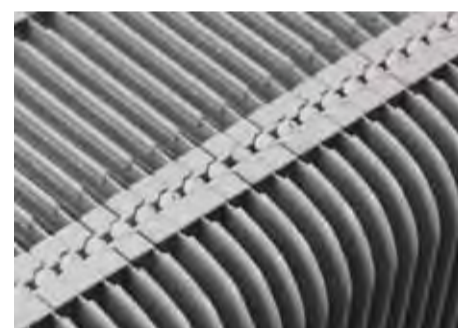
Zero distance joint with heat source, maximize capacity, enhance heat conduction effect hugely.



GEAR SHAPING PATENTED TECHNOLOGY



Fins insert into heat conducting plate tightly, maximum lower thermal resistance, no need electroplating, elegant and eco-friendly.



FIN-BUCKLE PATENTED TECHNOLOGY

Fins keep same distance between each other and buckle tightly as a whole, strengthen firmness of fins, maximize heat-dissipate area with minimum weight.

3D HEAT DISSIPATE



Hollow-out holes distribute in parallel and opposite in every fin, form left-to-right-passthrough convection channel, make three-dimensional heat sink with fin-distance, maximum transfer the heat.

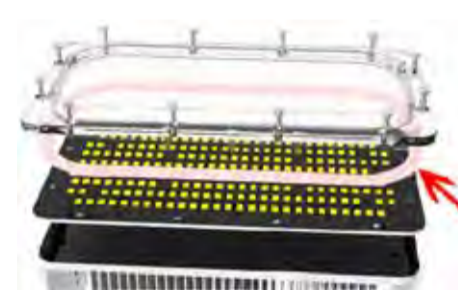
LARGE ADJUSTABLE DEGREE

0° - 270°



Screw lock attached installation, multiple adjustable points, adjustable angle is up to 270 degree, adjust lighting beam angle freely.

SEALED SILICON RUBBER RING



By using silicon rubber sealing, waterproof silicone ring, anti-high temperature anti-corrosive the protection rate, can achieve IP67, meeting the requirement for harsh, tough environment.

STAINLESS STEEL PARTS



304 stainless steel screws, accessories, Endurancing the corrosion of air, water, chemical acid, alkaline, salt and other materials, can be used in all kinds of harsh conditions for long term.



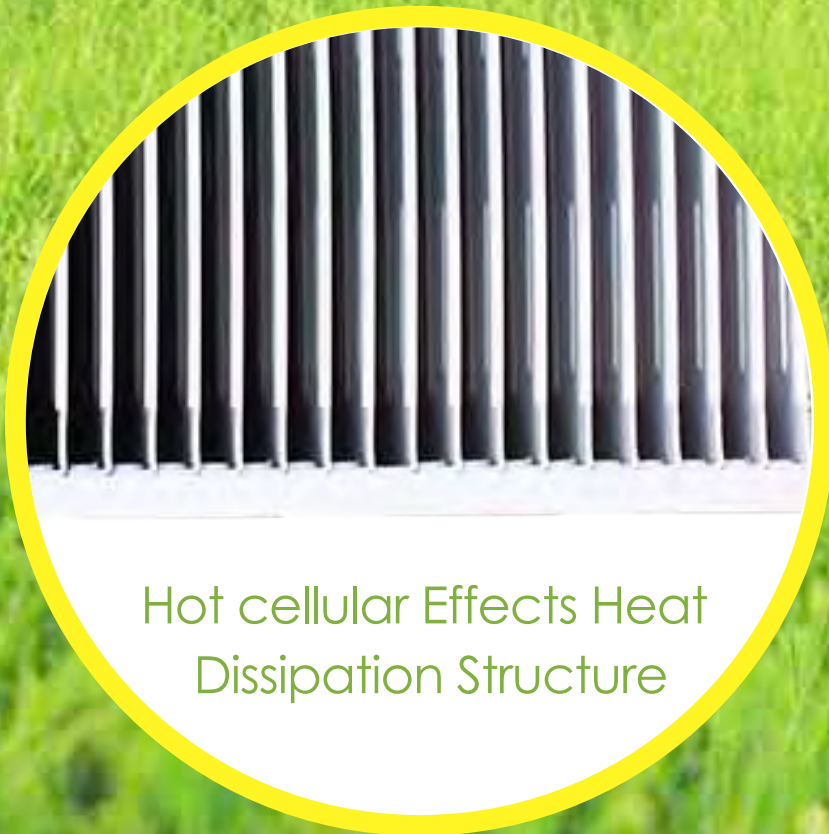
Well Protected IP68
Connector



Multi-Beam
Angle optional



Outdoor Anti-static
powder coating



Hot cellular Effects Heat
Dissipation Structure



Multiple Angles Adjustable
Bracket

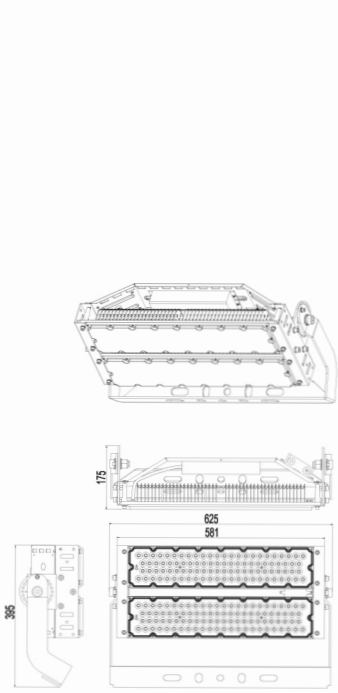


Meanwell HLG
/ELG Series Driver

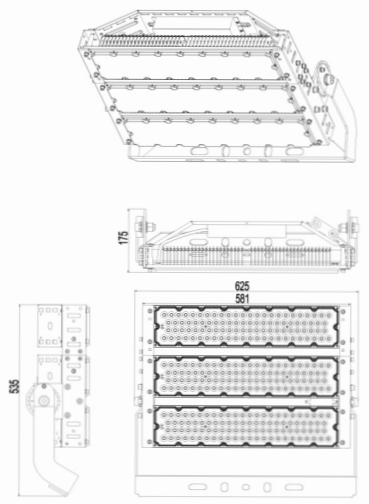


LUMILEDS

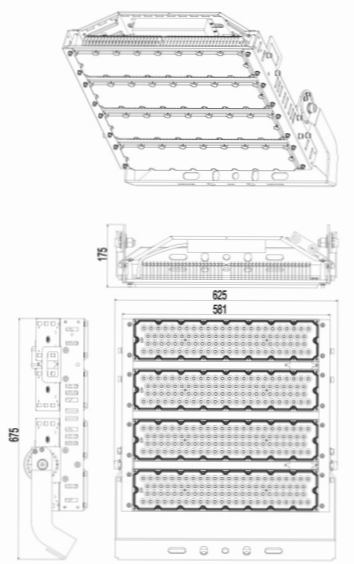
Highly Efficient LM80
Approved, The world
brand 5050 high
efficiency led light
optional



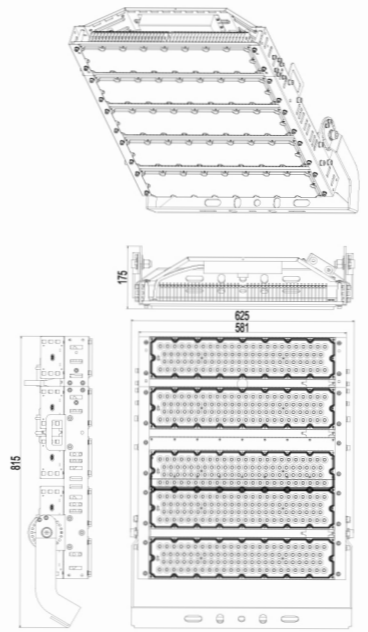
500-watt



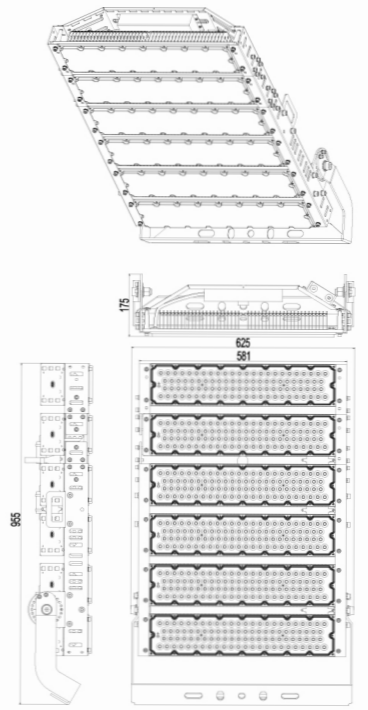
750-watt



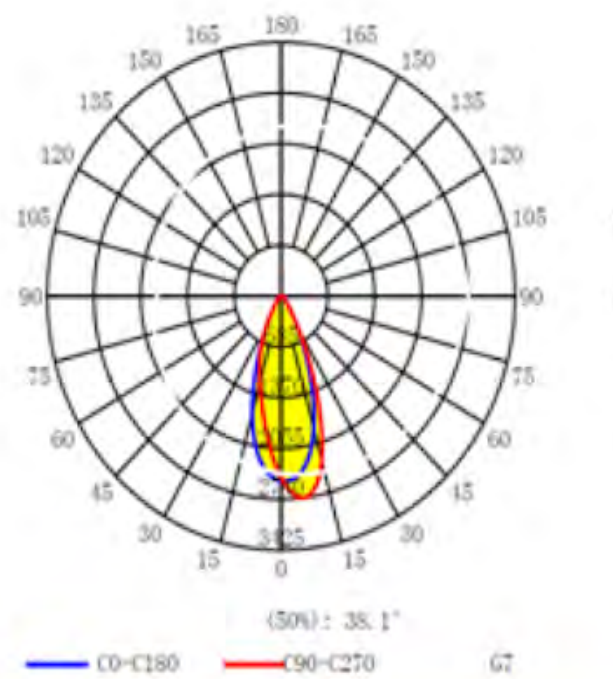
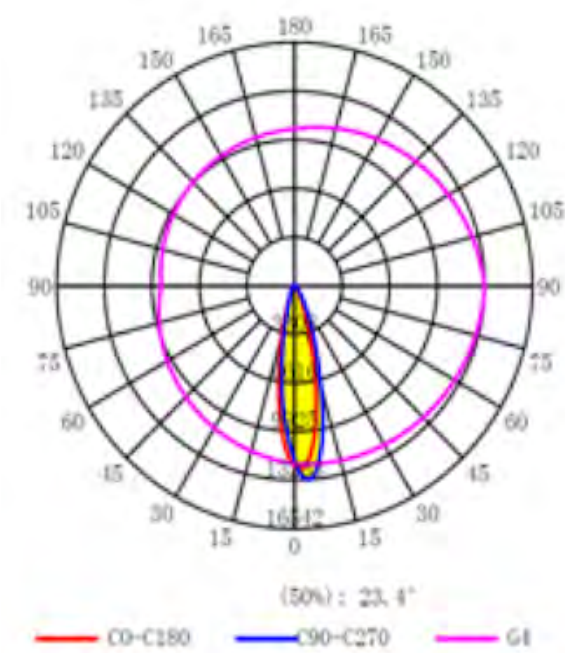
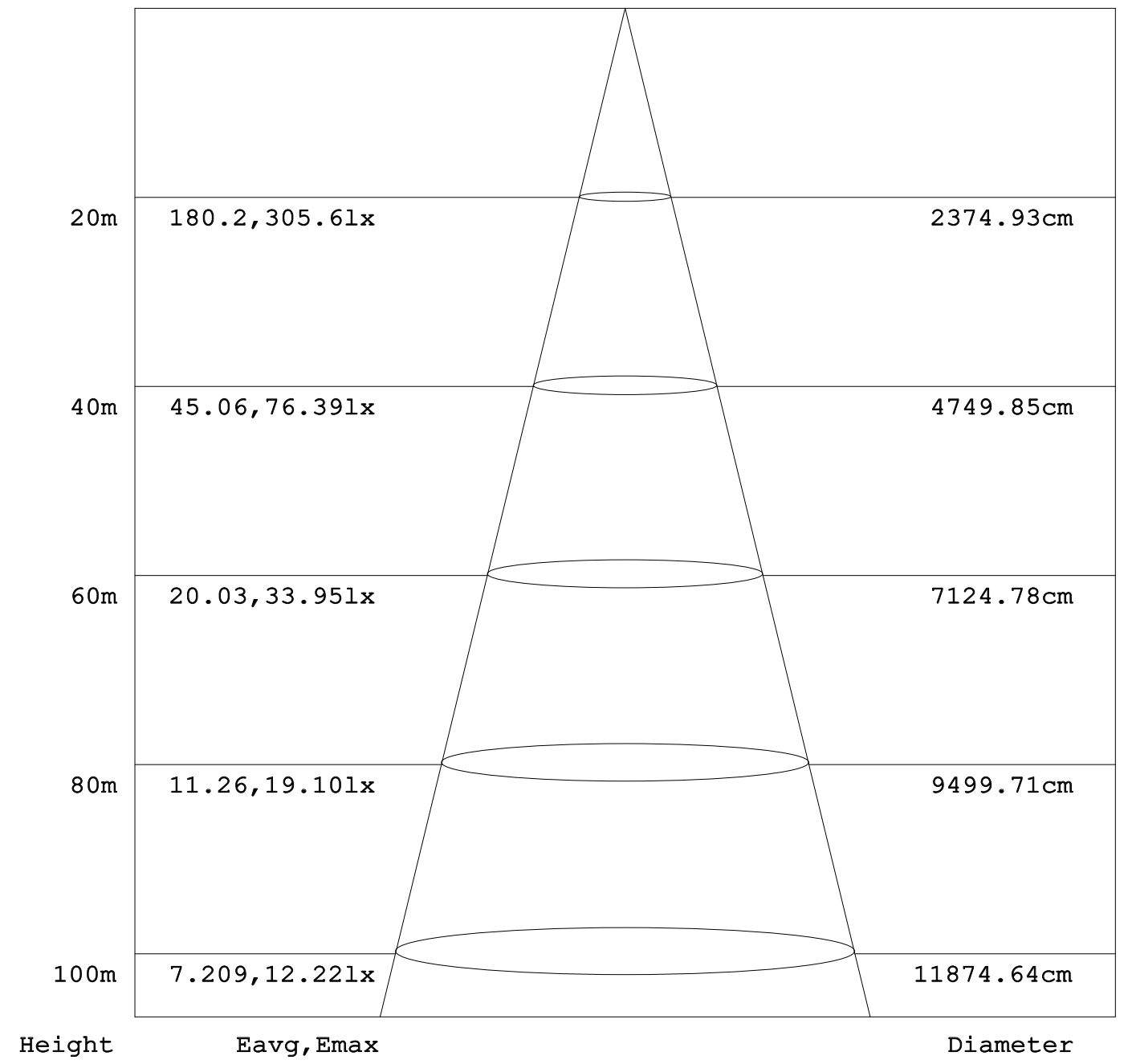
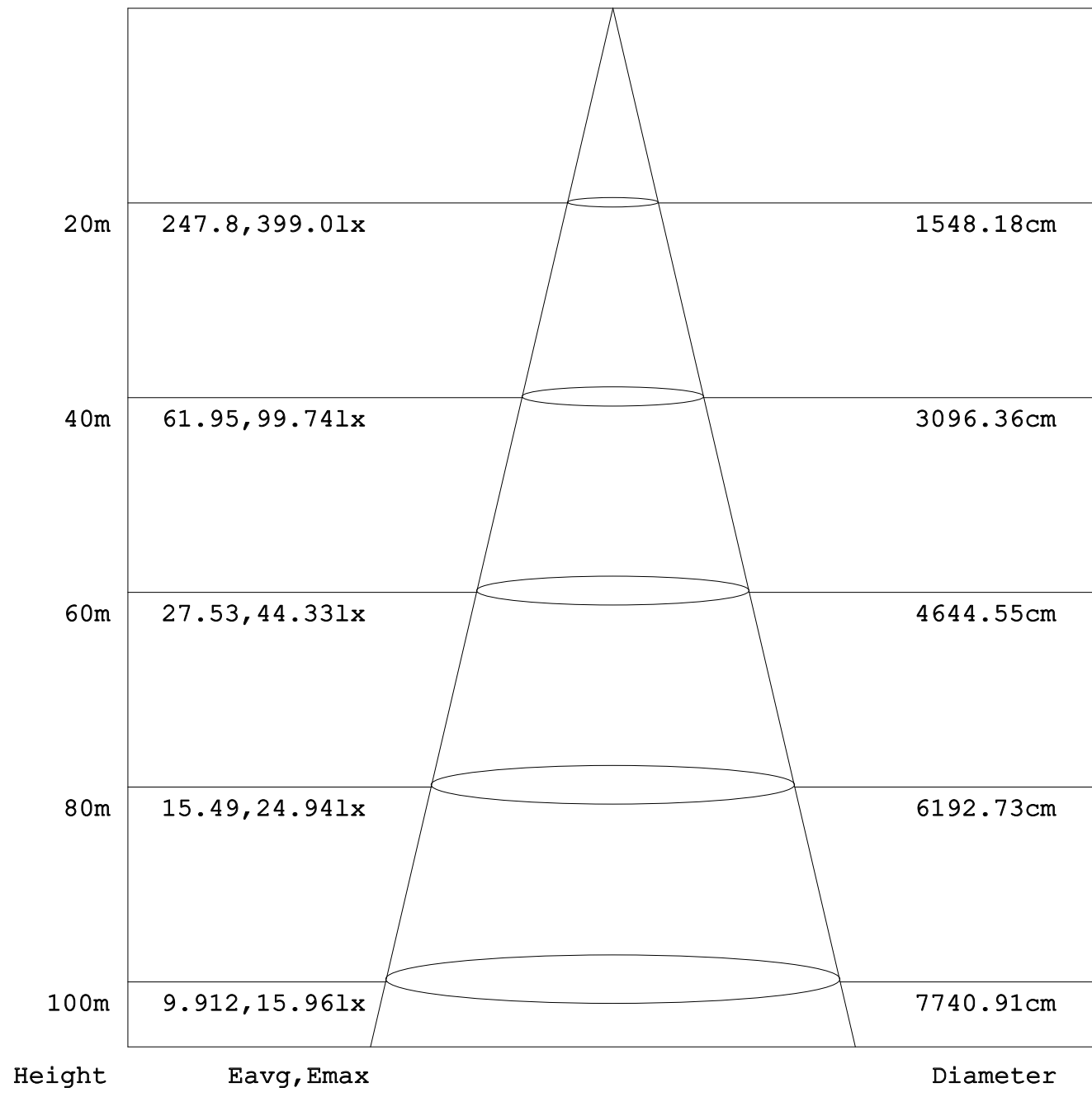
1000-watt



1200-watt



1500-watt



20° Light Distribution Curve

40° Light Distribution Curve

LUXSP-500W

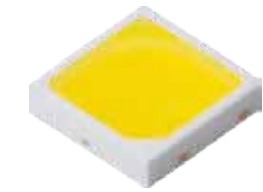
LED CHIP MODEL

POWER

LIGHT



>130 Lm/ W
500W



>120 Lm/ W
500W



>150 Lm/ W
500w



Product Data Sheet

AkzoNobel Powder Coatings Interpon600

Product Description

Interpon 600 is a series of polyester based powder coatings designed for the exterior environment, offering very good light and weather resistance.
Interpon 600 powders are available in a wide range of colours in gloss, satin, matt and textured effects and can be custom matched to the user's requirements.

Powder Properties

Chemical type	Polyester
Appearance	Depends on specific product
Particle Size	Suitable for electrostatic spray
Gloss	Depends on specific product
Specific gravity	1.2-1.8 g/cm ³ (depending on color)
Storage	Dry cool conditions below 30 °C
Shelf life	6months (<30 °C), 12 months (<25 °C)
Stoving schedule (object temperature)	10 minutes at 200°C Failure to observe the correct curing conditions may cause difference in colour, gloss and the deterioration of the coating properties.

Test Conditions

The results shown below are based on mechanical and chemical tests which (unless otherwise indicated) have been carried out under laboratory conditions and are given for guidance only. Actual product performance will depend upon the circumstances under which the product is used.

Substrate	Mechanical tests: 0.6mm degreased steel
Pretreatment	Chemical tests: 0.6mm Zn phoshated steel orchromated aluminum
Film Thickness	60-80 microns
Stoving Schedule	10 minutes at 200°C (object temperature)

Mechanical Tests

Flexibility	ASTM D522	Pass 5mm
	GB/T 1731	Pass 1mm
Adhesion	ASTM D3359	5B
	ISO 2409	Gt 0
	GB/T 9286	Gt 0
Erichsen Cupping	ISO1520	Pass >5mm
	GB/T 9753	Pass >5mm
Impact (direct)	ASTM D2794	>=50kg·cm
	GB/T 1732	50kg·cm
Pencil hardness(scratch)	ASTM D3363	>=H
	GB/T 6739	>=H

Chemical and Durability Tests

Humidity	ASTM D1735	Pass-1000 hours, no blistering or loss of gloss
Distilled Water Immersion	ASTM D870	Pass-240 hours, no blistering or loss of gloss
Exterior Durability		Excellent – no chalking, slight loss of gloss after 12 months continuous exposure but no film breakdown or reduction in protective properties

Interpon600

	Chemical Resistance	Generally good resistance to most acids, alkalis and oils at ambient temperatures
Corrosion Tests (Zn-phosphating pretreatment)	Neutral Salt Spray ISO 9227	Pass-800 hours, creep less than 2mm from scribe
Pre-treatment	Aluminum, steel or Zintec surfaces to be coated must be clean and free from grease. Iron phosphate and particularly lightweight zinc phosphate of ferrous metals improves corrosion resistance. Aluminum substrates may require a chromate conversion coating.	
Application	Interpon600 powders can be applied by manual or automatic electrostatic spray equipment, however for consistency of finish automatic equipment is preferred. Unused powder can be reclaimed using suitable equipment and recycled through the coating system. Fluidizing air pressure ~0.7 bar Transport air pressure ~0.7bar Recommended voltage 40-90kV	
Damage Repair	Surface preparation Sanding + Air cleaning Application Recoat : Lower Voltage	
Safety Precautions	When using, do not eat, drink or smoke. Do not breathe the dust. In case of insufficient ventilation wear suitable respiratory equipment. For further information please refer to the specific product Material Safety Data Sheet (MSDS) available on request from your local AkzoNobel sales office.	
Disclaimer	IMPORTANT NOTE: The information in this data sheet is not intended to be exhaustive and is based on the present state of our knowledge and on current laws: any person using the product for any purpose other than that specifically recommended in the technical data sheet without first obtaining written confirmation from us as to the suitability of the product for the intended purpose does so at his own risk. It is always the responsibility of the user to take all necessary steps to fulfill the demands set out in the local rules and legislation. Always read the Material Data Sheet and the Technical Data Sheet for this product if available. All advice we give or any statement made about the product by us (whether in this data sheet or otherwise) is correct to the best of our knowledge but we have no control over the quality or the condition of the substrate or the many factors affecting the use and application of the product. Therefore, unless we specifically agree in writing otherwise, we do not accept any liability whatsoever for the performance of the product or for any loss or damage arising out of the use of the product. All products supplied and technical advices given are subject to our standard terms and conditions of sale. You should request a copy of this document and review it carefully. The information contained in this data sheet is subject to modification from time to time in the light of experience and our policy of continuous development. It is the user's responsibility to verify that this data sheet is current prior to using the product. Brand names mentioned in this data sheet are trademarks of or are licensed to AkzoNobel	

AKZONOBEL Performance Coatings (Changzhou) Co. Ltd
No.1 Chunping Road, Binjiang Chemical Industrial Park, New District, Changzhou. T: +86(0519 81065000)
AKZONOBEL Powder Coating (ShenZhen) Co.Ltd
Luotian avenue, Songgang Town, Shenzhen City. T: +86 (0755 27148450) F: +86 (0755 29936451)
AKZONOBEL Powder Coating (LangFang) Co.Ltd
32# Quanxing road, LangFang economic development area. T: +86 (0316 5919519) F: +86 (0316 5919516)
AKZONOBEL Powder Coating (ChengDu) Co.Ltd
9C Longteng industrial city, 155# centural avenue, ChendDu. T: +86 (028 84847493) F: +86 (028 84865050)
AKZONOBEL Powder Coating (WuHan) Co.Ltd
89# Xinhua road, Wuhan economic development area. T: +86 (027 84256701) F: +86 (027 83564473)
www.interpon.com

Copyright ©2014Akzo Nobel Powder Coatings Ltd.Interponis a registered trademark of AkzoNobel
Interpon600 - Issue #2
Issued: 2014-11-1 Revision Date: 2018-5-15