

50W 2-WAY ROTATABLE DOWNLIGHT



>> Product Features

- LED Power : 50W
- Lamp Consumption : 55W
- Net Weight : 1.55kg
- SDCM : <4
- Dimension : $\phi 250 \times H126\text{mm}$ (A/B)
- Cutout : $\phi 205-230\text{mm}$
- Input Voltage : 100-277VAC
- Color of Frame : white/ black/ silver
- Lifespan : 50000 hrs
- Warranty : 5 years

Dimmable

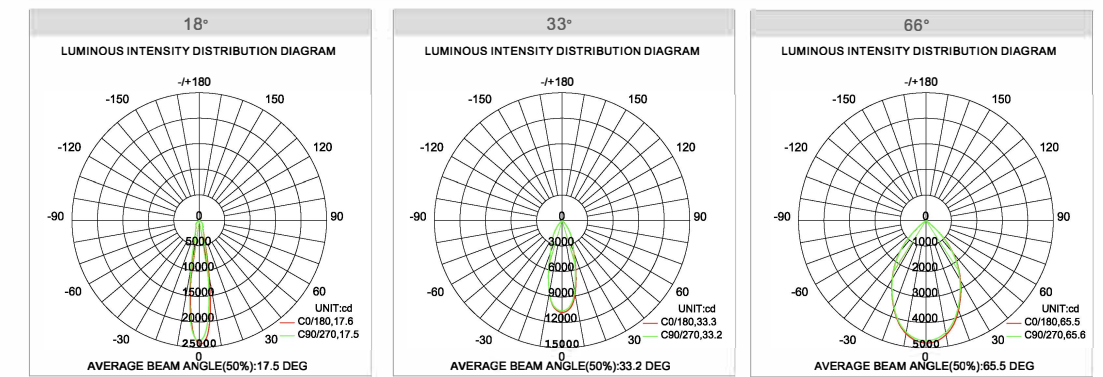


>> Datasheet

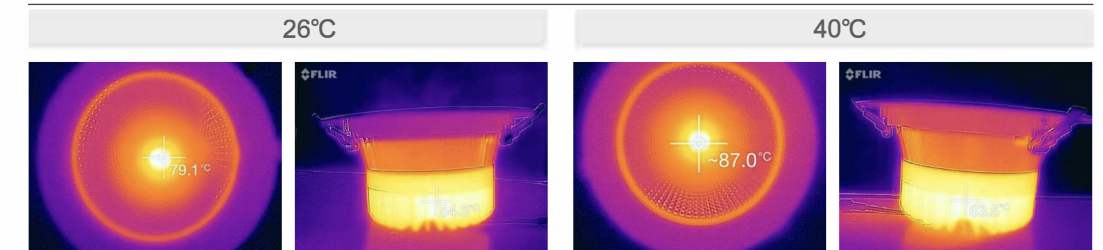
Type A/B (Note: ***means A or B.)

Part No.	COB brand	CCT	Output			Beam angle	UGR
			CRI80	CRI90	CRI96		
COB 50W*250	InUi (Epistar)	2700K-7000K Available	5100-5400lm	4500-5000lm	4200-4500lm	30°/40°/65°	10-17
COB 50W*250	InUi (Epistar)		5700-6000lm	5200-5600lm	4800-5200lm	30°/40°/65°	10-17
C2CL50W*250	CITIZEN		5200-5500lm	4800-5000lm	4400-4600lm	15°/24°/ 45°	10-17
T2CL50W*250	TYANSHINE	2700-5700K Dimmable	3800-4500lm	3500-4200lm	no	15°/24°/ 45°	10-17

>> IES



>> Working Temperature



>> Packing

