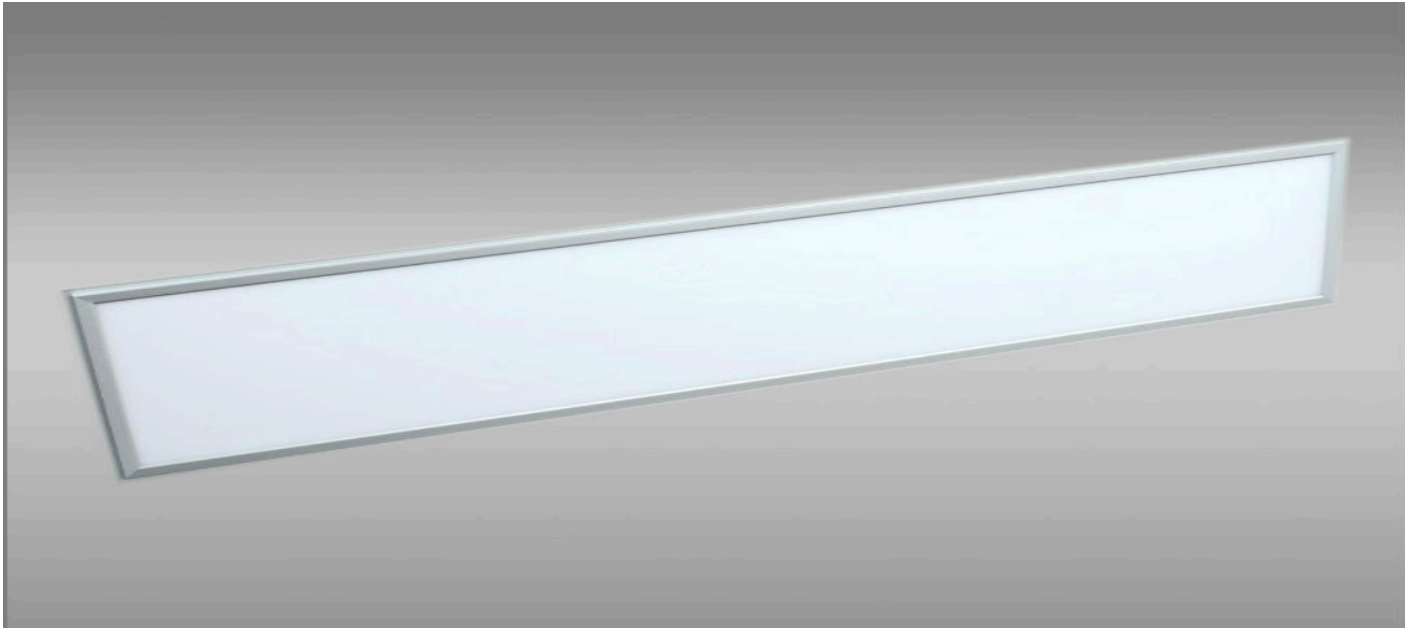

LED Panel Light Specification List



Product Name: LED Panel Light

Model No: LEDPAN1512



**** Contents ****

1. Product Description	2
2. Application	2
3. Technical Parameter	3
4. Dimension	4
5. Luminous Distribution Diagram	5
6. Illuminance Diagram	6
7. LED Life Prediction	6
8. Package	7
9. Installation Method	8
10. Attention on Installation	10
11. Notes on using	10
12. Maintenance Suggestion	10

Product Description

- Super slim design, save 70% energy, High efficiency 120LM/W with uniformed luminance.
- Life span: 50000 hours
- Wide range of input voltage: AC100-270V
- Instant start, no noise, no flickering
- New high efficiency constant current driver.
- Professional circuit design, each group of LEDs work separately to avoid any problem of lighting output caused by single faulty LED.
- No electrical wave interference, confirm to the standard of CE.
- No Mercury, green environment friendly, confirm to the standard of RoHS.
- No RF interference.

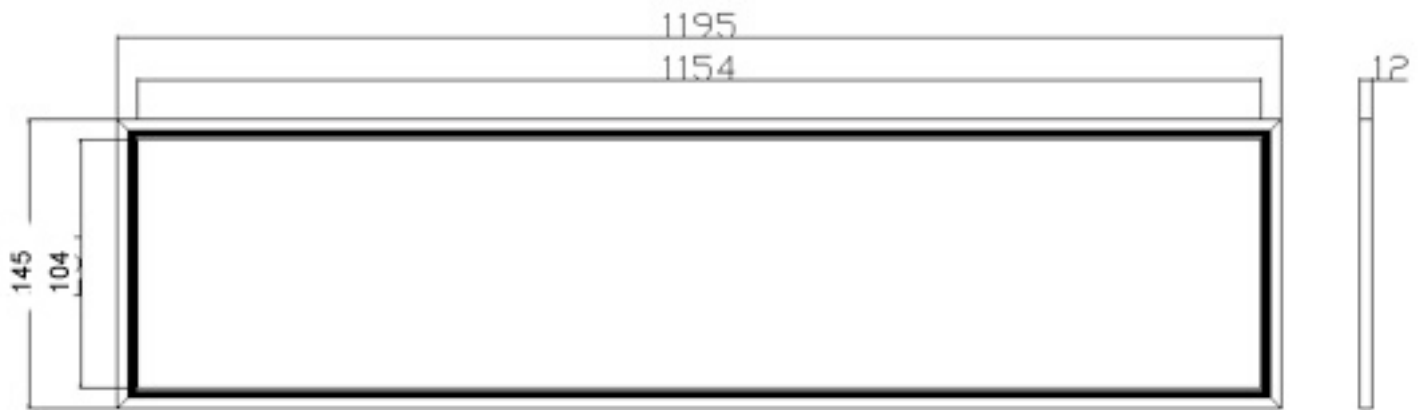
Application Scope

Hotel	Meeting Room	Factory & Office
Commercial Purpose	Residential & Institution	School
Hospital	Other lighting location	

Technical Parameter

No	Parameter	
01	Input Voltage	AC 110-277V(UL) AC100-240V(CE)
02	Working Voltage	≤36V
03	Input Power	<input type="checkbox"/> 36W <input type="checkbox"/> 48W
04	Luminous	<input type="checkbox"/> 36W <u>4320</u> lm <input type="checkbox"/> 48W <u>5760</u> lm
05	Power Efficiency	<input type="checkbox"/> 36W <u>120</u> lm/w <input type="checkbox"/> 48W <u>120</u> lm/w
06	Frame Colour	Silver but also other colours on request
07	Colour Temp	<input type="checkbox"/> WW / Warm White 2800-3500K <input type="checkbox"/> NW / Natural White 4000-4500K <input type="checkbox"/> W / White 5000-5500K <input type="checkbox"/> CW / Cool White 6000-6500K
08	CRI	2835 ≥ 83
09	Chip Qty	2835 <input type="checkbox"/> 36W <u>88</u> PCS <input type="checkbox"/> 48W <u>100</u> PCS
10	LED Type	<input type="checkbox"/> Lumenmax 2835
11	Life Span	50000 Hours
12	Operating Temp	-20°C — 50°C
13	Storage Temp	-20°C — 60°C
14	Net Weight	4.0 Kg
15	Gross Weight	4.5 Kg
16	IP	IP 42

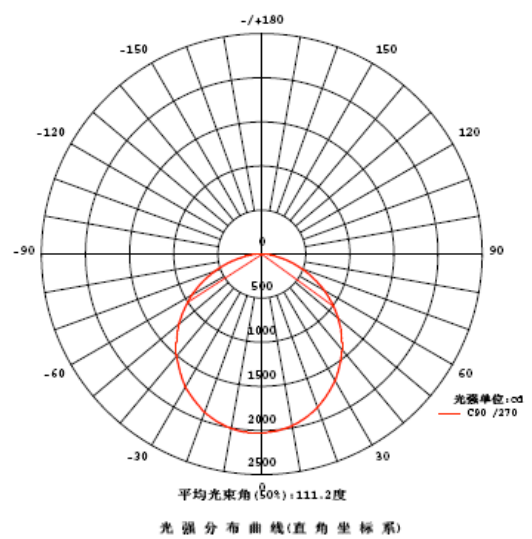
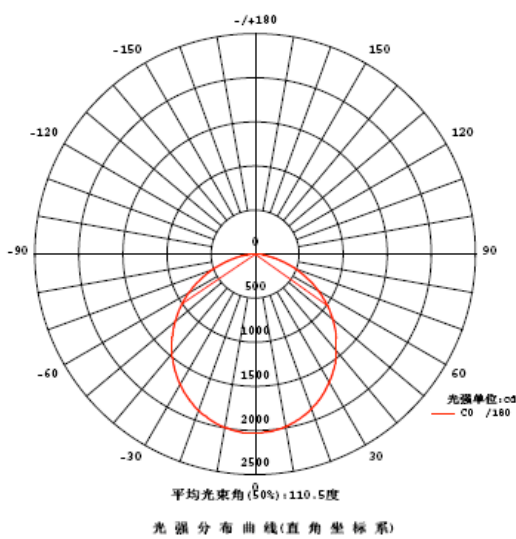
Product Dimension:



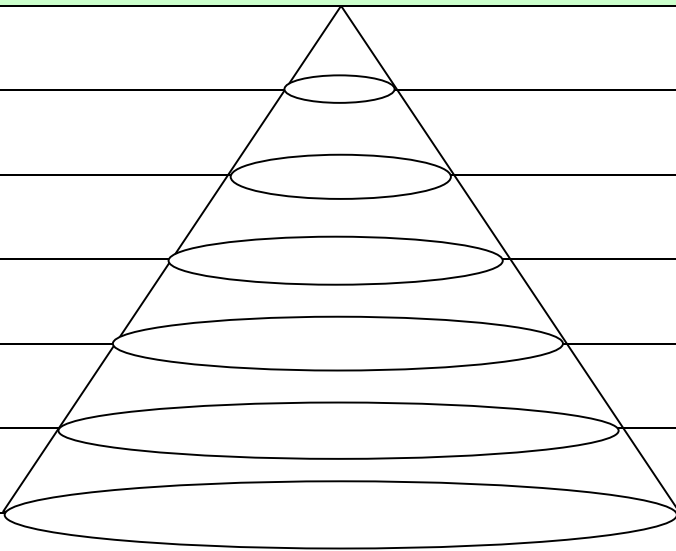
Remarks:

1. The above dimension are based on “mm”
2. There is a tolerance about $\pm 0.5\text{mm}$

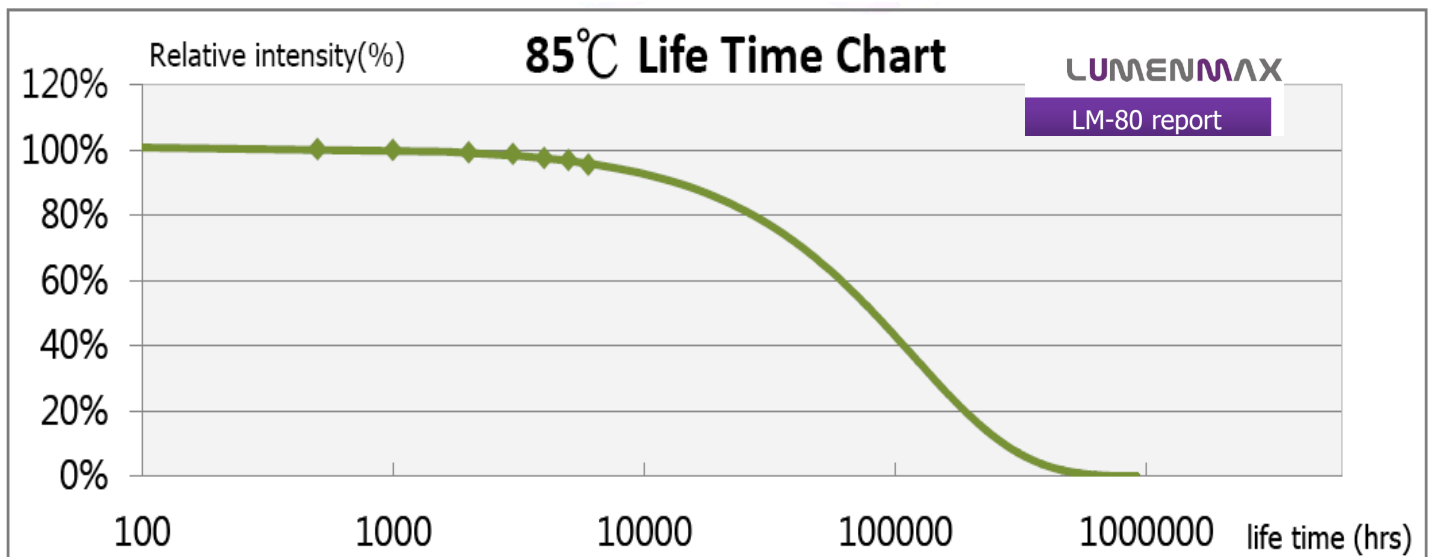
Luminous Distribution Diagram:



Illuminance Diagram :

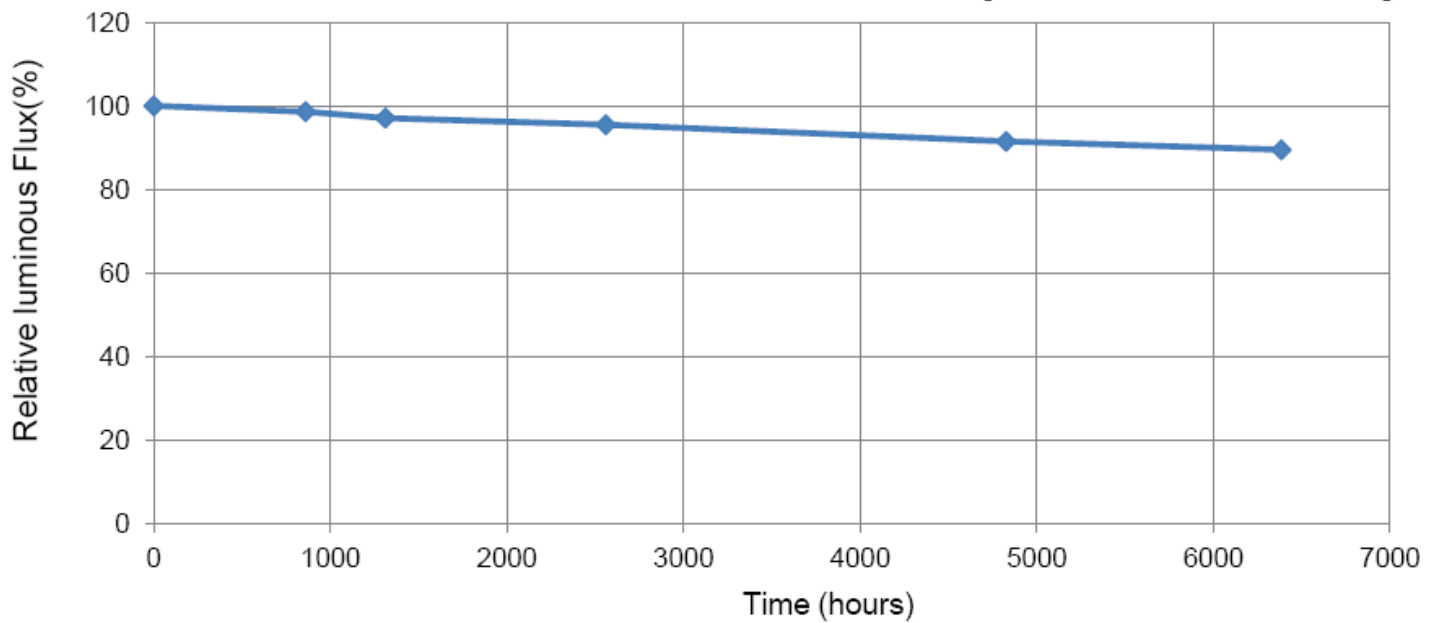
Distance		Central Illuminance			
Power		36W		48W	
1m		1039		1438	
1.5m		582		687	
2m		259		357	
2.5m		166		227	
3m		115		159	
Power		36W		48W	

LED Life Prediction

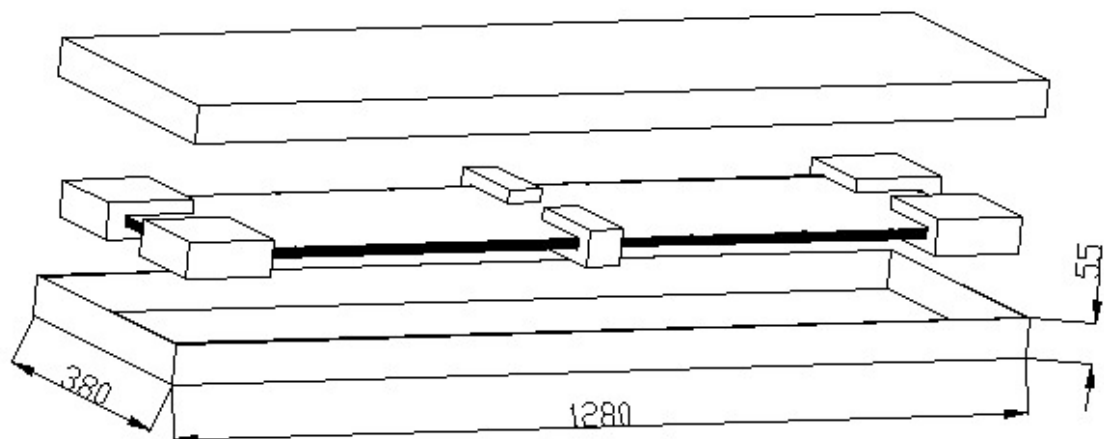


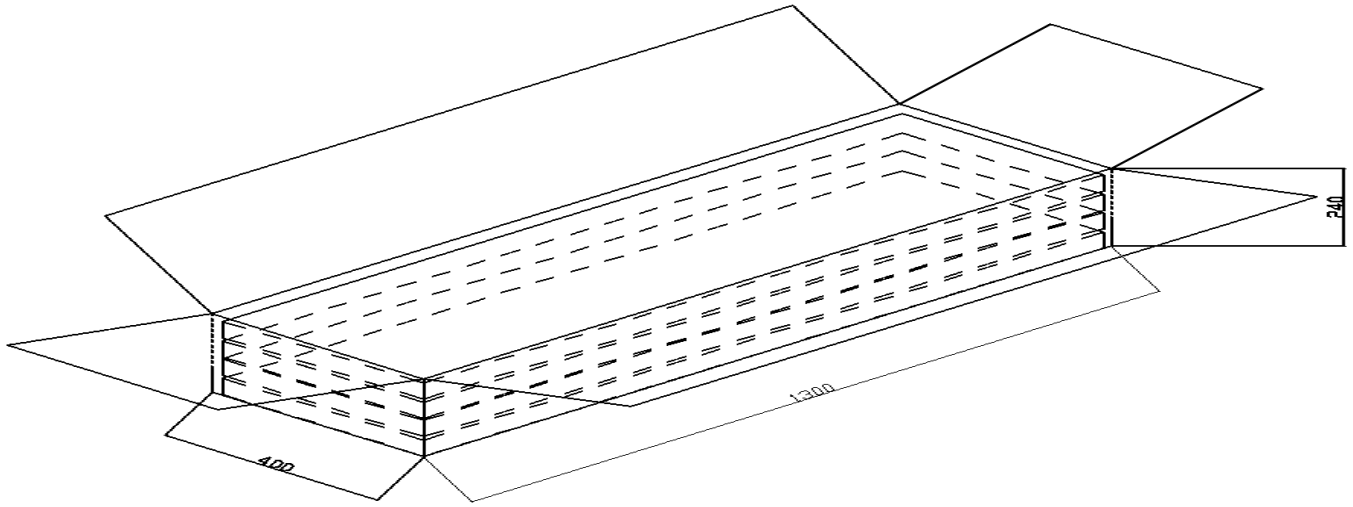
Samsung MP56L CRI70+ Test Result in our lab

[Condition : 100mA, 85°C]



Package:





Packing Size:

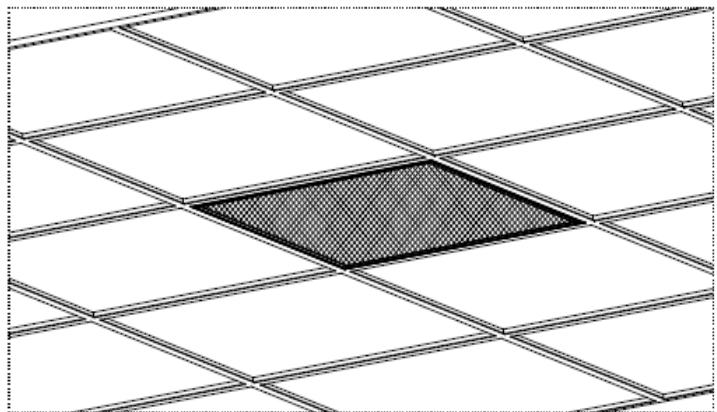
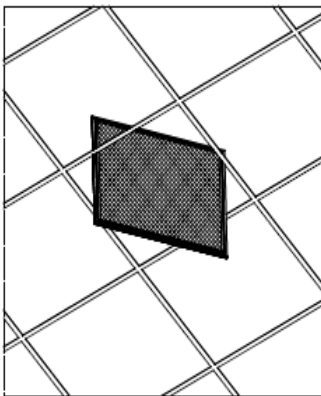
Inner Box : 380×1280×55mm (1pcs/box) Net Weight : 4.0KG Gross Weight: 4.5KG

Carton: 400×1300×240mm (4pcs/carton) Net Weight : 18.8KG Gross Weight : 21 KG

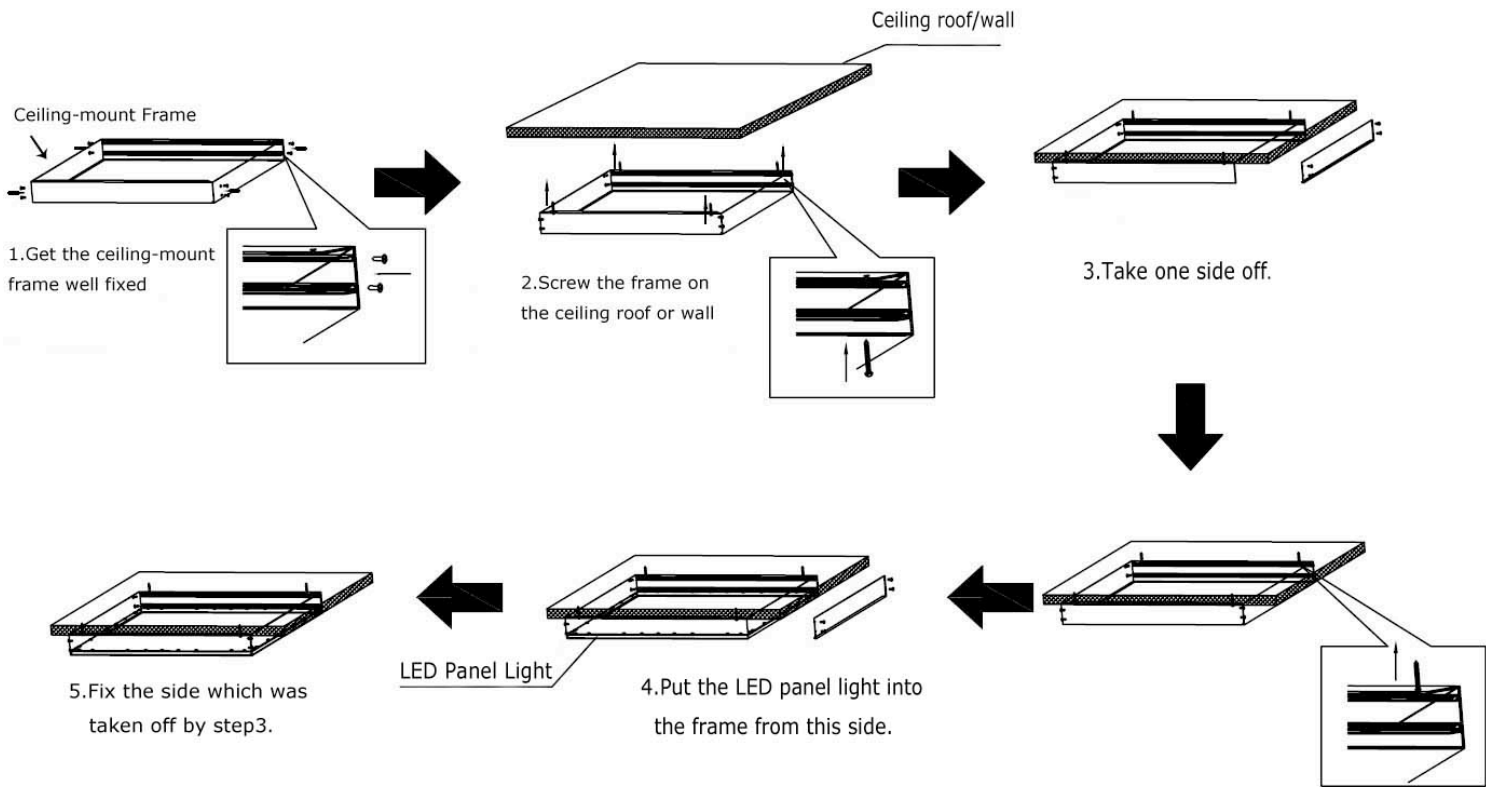
4 boxes packed in a Carton

Installation Method:

1. Recessed

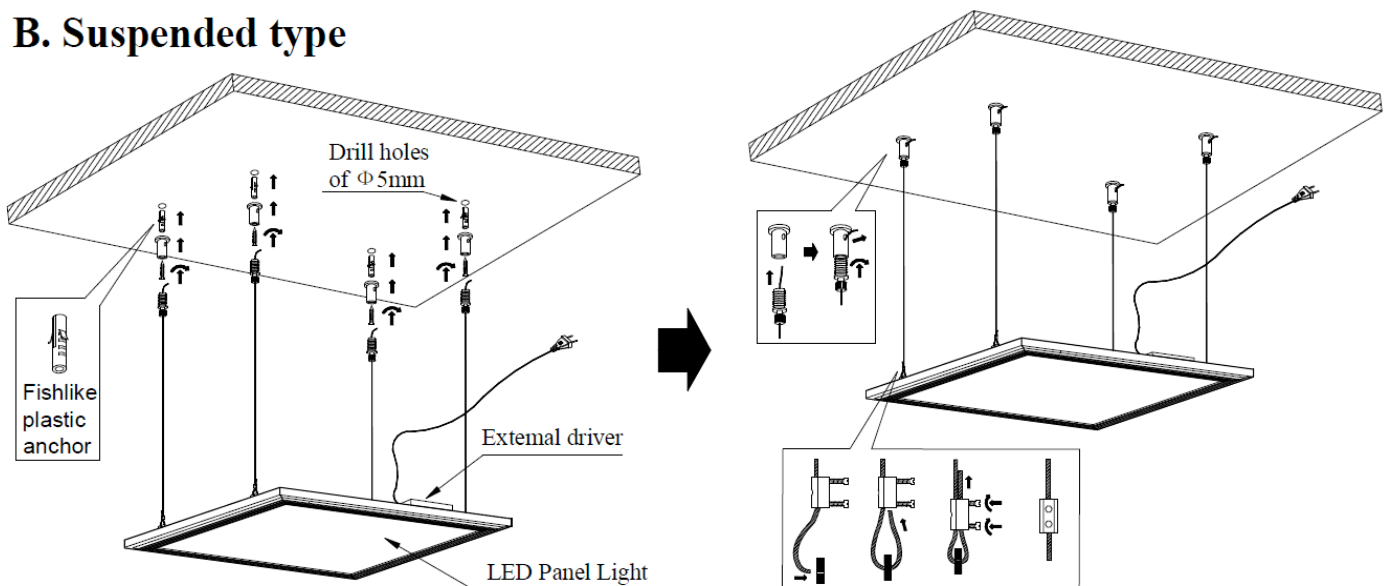


2. Ceiling Mounted



3. Suspended

B. Suspended type



Attention on Installation:

1. Panel lights should be installed by a competent electrician.

-
2. Please check all the accessories when open the cartons.
 3. The distance between the light and any flammable materials must be more than 0.2m. The distance between the upper part of the installed light and the ceiling must not be less than 2 cm. Don not install into ceilings or walls that contain heat source. The main cable must not connect with the low voltage cable or the surface-mounted lights.
 4. Guide the lights' connecting cables through the drilled hole, and fix the surface-mounted lights with the pre-fitted clips. Make sure that these are securely connected to the base material.
 5. When laying the cables, make sure that the cables and plugs are not subjected to any tensile or twisting forces. Do not kink cables. Output cables should be laid separately and at a distance from other cables.
 6. After installation, connect the transformer to the mains supply
 7. Proceed by connecting the wiring cables to the lights. Usually, the brown (or black) wire is the Live wire, connect it with the terminal marked "L". The blue wire is Neutral wire; connect it with the terminal marked "N".
 8. Use the dedicated LED drivers only; do not connect to other loads
 9. Do not remove the label of the lights and drivers.

Notes on Using:

1. Please always use the light out of its package.
2. Before starting use of the light, please check if the light was damaged during transportation. If any damage shown, please DO not install or use it.
3. Any maintenance work should be performed by a competent person only.
4. Keep packaging material away from the reach of children and pets.
5. Caution: Keep children away from the lights, there are some small components that may be swallowed by children, and never allow them to play with electrical devices.
6. Try to avoid looking directly at lights for a long time. Do not shine the LED light in another person's eyes.
7. Never cover the lights by other objects
8. Keep the panel light away from the flames or heat sources.
9. The lights should be inspected repaired or special treatment if beyond service time.
10. Non-professionals are not allowed to disassemble and maintain the products. We have the right not to provide after-sale service if unauthorized disassembly and maintenance happens to the products.

Maintenance:

1. Before to clearing the panel lights, please make sure the power is OFF.
2. Use a dry or slightly moistened cloth for cleaning.
3. Never use any chemicals or abrasives for cleaning.