

Customized Stretch Wrappers with Advanced Technology since 1994

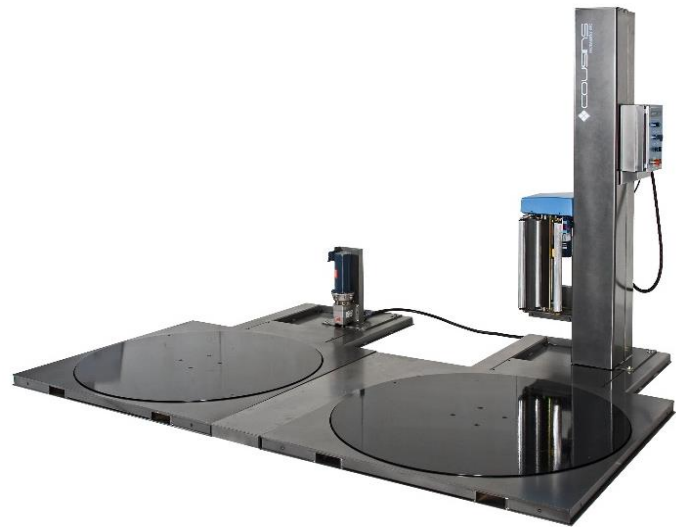
DUAL TURNTABLE OPTION

INCREASE YOUR PRODUCTIVITY WITH TWO TURNTABLES

The main advantage of a dual turntable machine is the ability to have one pallet being wrapped while the operator brings another to the second turntable. The operator can continuously alternate loads with the two turntables which will increase productivity. The dual turntable option is available in both low profile (LP) and high profile (HP) models.



HP (high profile model)



LP (low profile model)

Cousins offers two simple and inexpensive methods of increasing productivity even further with either of these two options that replaces 50% of operator duties and reduces injury risk.

O AFC – Automatic Film Cutter - Automatically cuts the film at the end of the cycle eliminating the need for the driver to leave the forklift and to bend over to cut the film. Saves time and reduces the chance of injury.

O AFS – Auto Film Start - Reduce the number of times the operator must leave the forklift by using a wireless remote and film attachment clip on the turntable to start the wrap cycle. Saves time and cuts the chance of injury in half. Best for those operators who have to go to the pallet at the end of the wrap cycle to apply a label, a top sheet or for any other reason.

