

# TURNING YOUR BENCH INTO FUNCTIONAL ART



NOBLEWINS

## DESIGN MOCKUPS & ARTIST CALL-OUTS

We invite schools, artists, and community groups to submit mural designs for Noblewins pieces - each product is a unique canvas for creative expression. Product images for design mockups follow this one-pager. Artists can sketch directly on them, overlay digital designs, or submit concept art.

## SURFACE INFO

**To ensure the best results, please follow these guidelines:**

- Paint within 30 days of delivery for optimal adhesion and durability. If the product is stored indoors and protected from moisture and sunlight, it may last longer - but the surface must remain clean and dry.
- If painting after 60 days, we recommend a light sanding or cleaning to remove dust or surface breakdown before applying paint.
- If your product arrives wrapped, remove any wrapping immediately upon delivery. Leaving it wrapped can trap moisture and damage the primer.



## PAINTING A MURAL

### Step 1: Prep the Surface

- Wipe clean with a damp cloth
- If dusty or slick, lightly scuff with 220-grit sandpaper and wipe again
- Ensure the surface is dry before painting

### Step 2: Recommended Paints

- Sherwin-Williams Resilience, SuperPaint, or Duration Exterior Acrylic
- Nova Color Acrylic Artist Paints
- Behr Ultra or Marquee Exterior Acrylic Latex

### Step 3: Optional Clear Coat for Protection

- Sher-Clear 1K (Sherwin-Williams)
- World's Best Graffiti Coating
- Golden MSA Varnish (Gloss or Satin) with UVLS
- Apply 1-2 coats once mural is fully dry (24-48 hrs)
- Always test a small area first for compatibility



## VINYL WRAPPING (ALTERNATIVE TO PAINTING)

### Recommended Vinyl Materials

- 3M Controltac Graphic Film IJ180
- Avery Dennison MPI 1105 SuperCast
- Orajet 3951RA + Oraguard 290 laminate

### Application Tips

- Clean surface thoroughly
- Apply between 60°F - 80°F
- Use heat guns and tools for curves
- Laminate for UV/graffiti protection



# YOSEMITE

**WIDTH: 60-72"**

**DEPTH: 24"**

**HEIGHT: 21"**



# **BIG BEND**

**WIDTH: 72-84"**

**DEPTH: 24"**

**HEIGHT: 40"**



**NOBLEWINS**



# **SEQUOIA**

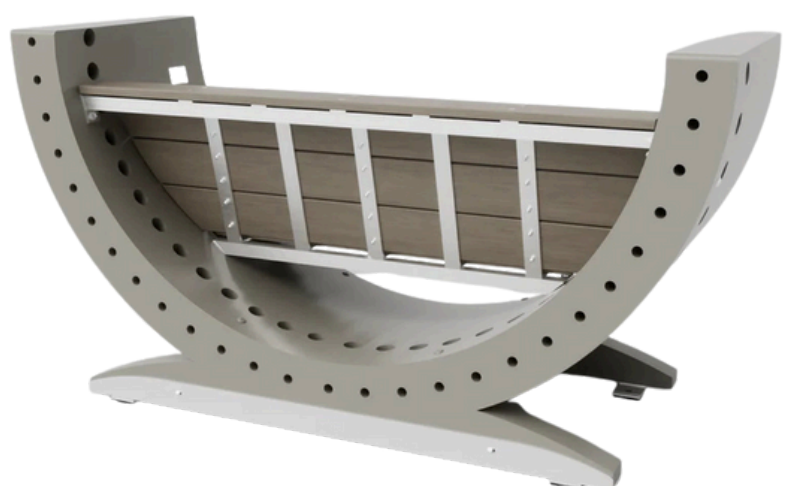
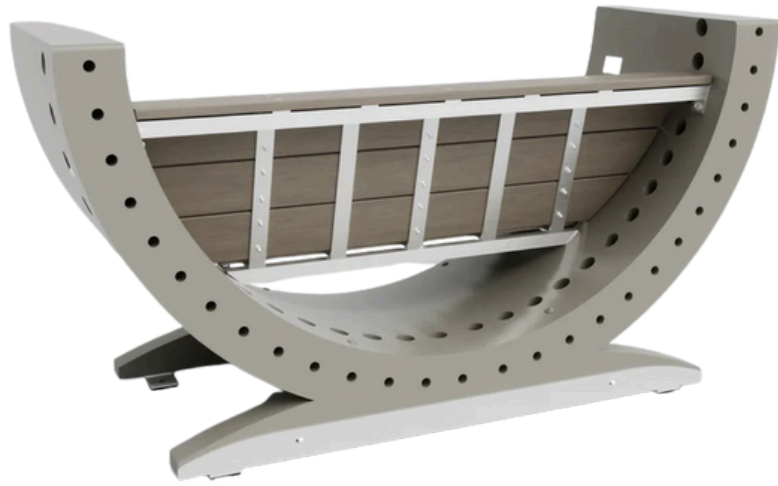
**WIDTH: 72-84"**

**DEPTH: 30"**

**HEIGHT: 40"**



**NOBLEWINS**





# **ZIÖN**

**WIDTH: 8'**

**TABLE DEPTH: 24"**

**TABLE HEIGHT: 21"**

**SEAT DEPTH: 17"**

**SEAT HEIGHT: 18"**



# **ARCH**

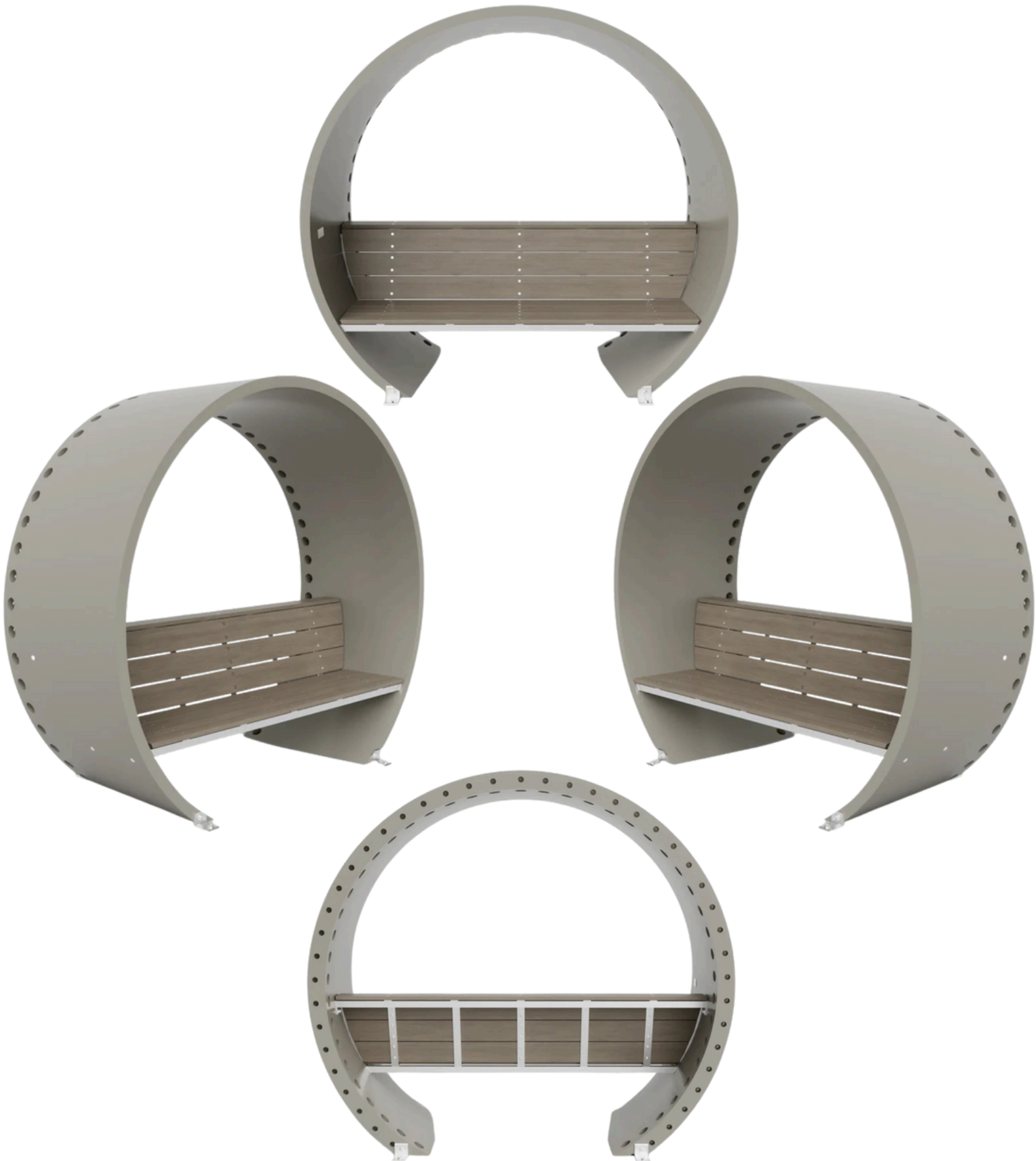
**WIDTH: 90-96"**

**DEPTH: 36"**

**HEIGHT: 80-86"**



**NOBLEWINS**



# **EVERGLADE**

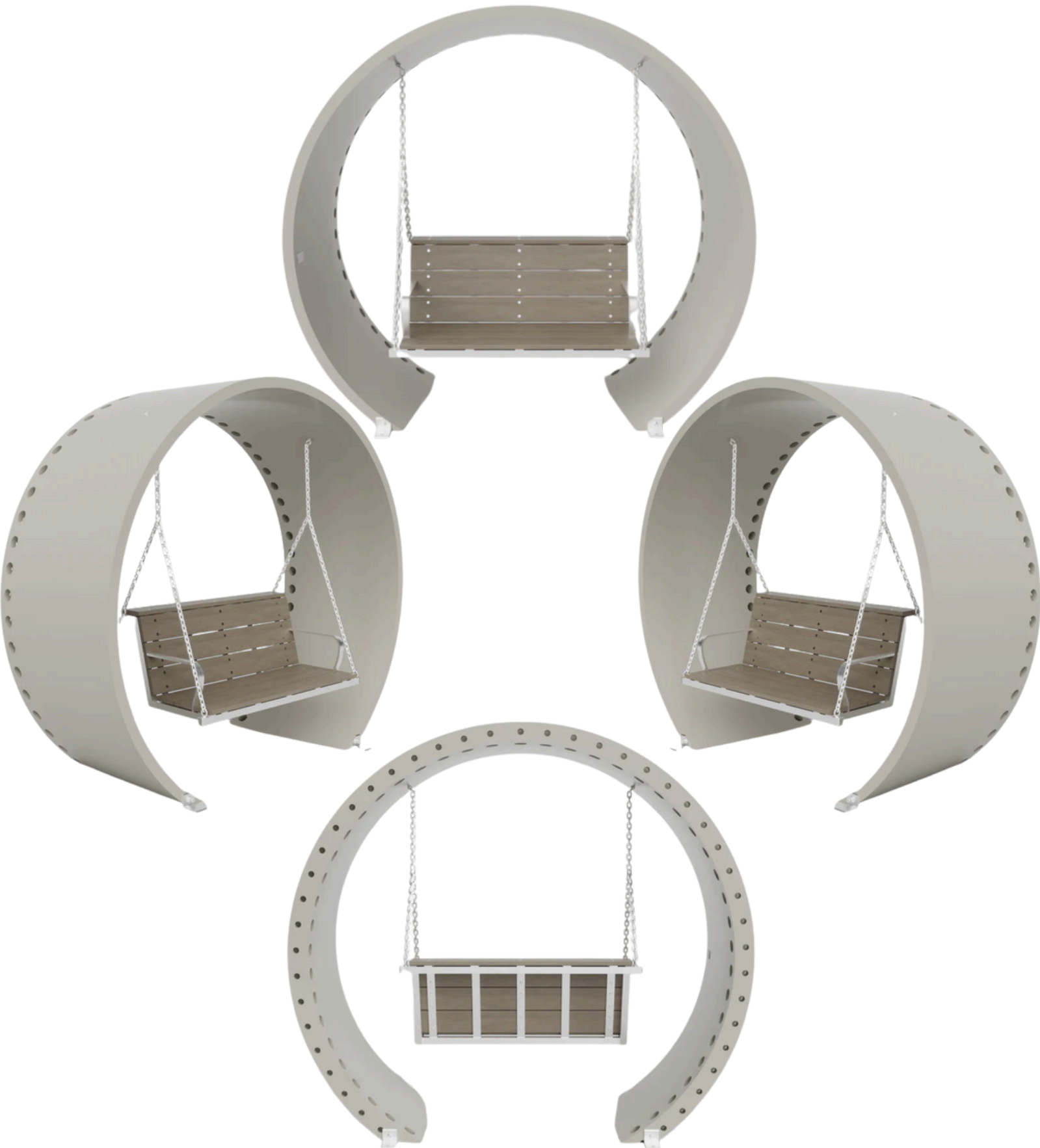
**WIDTH: 90-96"**

**DEPTH: 36"**

**HEIGHT: 80-86"**



**NOBLEWINS**



# **ACADIA**

**WIDTH: 50-70"**

**DEPTH: 30"**

**HEIGHT: 91-112"**

