



CUSTOM SALES

# VISUAL LINE PLAN

2023

# TRIATHLON

2



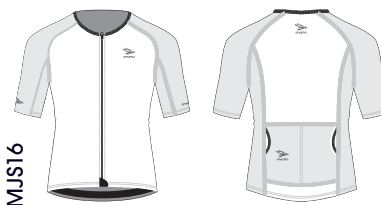
MTAJ01

- Carbon mesh fabric
  - heat dissipation
  - bacteriostatic prevents odor
  - hypo-allergenic
  - additional protection from harmful UV-A and UV-B exposure
- Full-length separating zipper with semi-auto locking puller for controlled venting.
- Longer sleeve length for optimal aerodynamics and sun protection.
- Seamless underarm construction to reduce chafing and increase flexibility.
- Carefully designed side-entry aero rear pockets for easy fuel access.
- UPF 50+ Sun Protection



WTAJ01

SP2 SS Aero Tri Jersey



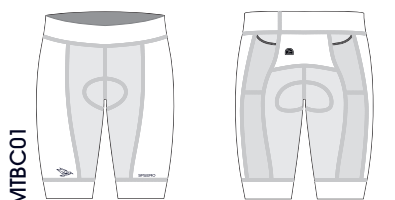
MJJ16

- Unique blend of teflon-treated fabric for sun protection and mesh for cooling.
- Full-length separating zipper with semi-auto locking puller for controlled venting.
- Longer sleeve length for optimal aerodynamics and sun protection.
- Seamless underarm construction to reduce chafing and increase flexibility.
- Carefully designed side-entry aero rear pockets for easy fuel access.
- UPF 50+ Sun Protection



WJ16

SP3 SS Aero Tri Jersey

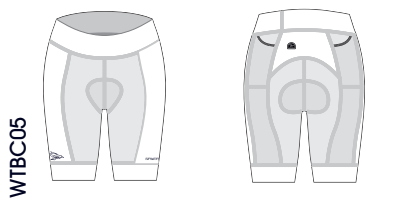


MTBC01



MTBC02

- High-quality Italian polyester blend fabric
  - Repels water and dries quickly.
  - Provides second skin fit that is compressive without being restrictive while providing optimal aerodynamics.
- Carbon mesh fabric
  - heat dissipation
  - bacteriostatic prevents odor
  - hypo-allergenic
  - additional protection from harmful UV-A and UV-B exposure
- Wide, flat waistband stays put without binding or restriction.
- Clever side pockets keep sports fuel snug with easy access.
- Lightweight gripper keeps leg hems in place on bike, on run, or in the water.
- Technical triathlon chamois gives optimal support and dries quickly.
- UPF 50+ Sun Protection



WTBC05

SP2 Tri Short (Full Sub)



WTBC06

SP2 Tri Short (Side Panel)



# TRIATHLON



MIT02



WTT02

SP3 Tri Tank (Race Fit)

- Unique blend of teflon-treated fabric for sun protection and carbon mesh for it's cooling properties.
- Proprietary armhole construction provides protection for the high-chafe region of the armpit.
- 3/4 zip front with semi-auto locking puller for controlled venting.
- Carefully designed side-entry rear pockets for easy access.
- Wide hem construction with gripper keeps stops top from riding up.
- UPF 50+ Sun Protection



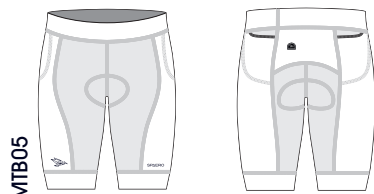
MIT03



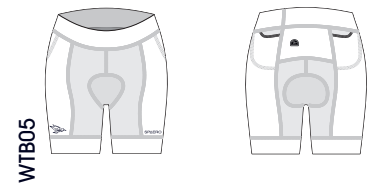
WTT03

SP3 Tri Tank (Athletic Fit)

- High quality Italian polyester blend fabric repels water and dries quickly.
- 3/4 zip with semi-auto locking puller for controlled venting.
- More coverage across shoulders and upper back, with a more relaxed fit through the body and hem.
- Three back stash pockets.
- UPF 50+ Sun Protection.



MTB05

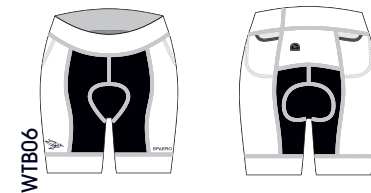


WTB05

SP3 Tri Short (Full Sub)



MTB06



WTB06

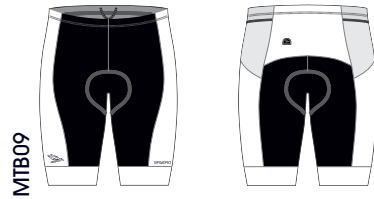
SP3 Tri Short (Side Panel)

- Highest quality Italian polyester blend fabric repels water and dries quickly.
- Wide flat waistband stays put without binding or restriction.
- Carefully placed side pockets keep sports nutrition snug with easy access.
- Lightweight gripper keeps leg hems in place whether swimming, cycling or running.
- Technical triathlon chamois provides optimal amount of support during races while staying out or your way and drying quickly.

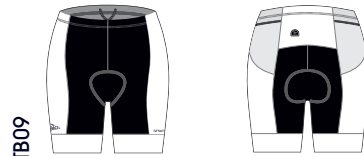


# TRIATHLON

4



MITB09



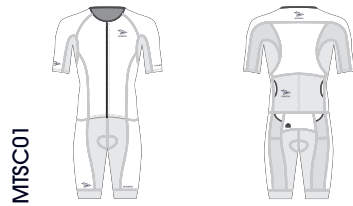
WTB09

SP3 Tri Short (Athletic Fit)

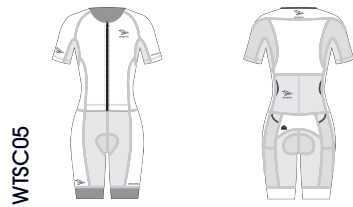
- Highest quality Italian polyester blend fabric repels water and dries quickly.
- Higher front / back rise for more coverage.
- Soft waistband with drawcord.
- Carefully designed rear pockets for easy access.
- Lightweight gripper keeps leg hems in place whether swimming, cycling or running.
- Technical triathlon chamois provides optimal amount of support during races while staying out or your way and drying quickly.



# TRI SUITS



MTSC01



WTSC05

SP2 Aero Tri Suit (Full Sub)



MTSC02



WTSC06

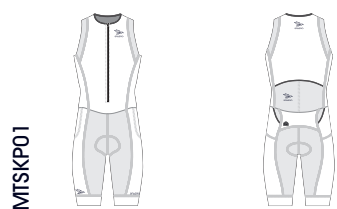
SP2 Aero Tri Suit (Dyed Inner Panel)

- Built from three different Italian fabrics, carbon mesh fabric for heat regulation and breathability, another to accelerate the drying process, and a third for stretch, comfort, and aerodynamics.
- Second skin fit that is compressive without being restrictive while providing optimal aerodynamics.
- Low neckline for comfort and decreased drag.
- Longer sleeve length for optimal aerodynamics and sun protection.
- Separating zipper finish with semi-auto locking puller for controlled venting.
- Two or three easy-to-reach, sleek but functional back pockets.
- Lightweight gripper keeps leg hems in place whether swimming, cycling or running.
- Premium Italian triathlon chamois provides optimal amount of support during races while staying out on your way and drying quickly.
- UPF 50+ Sun Protection



# TRI SUITS

6



MTSKP01



MTSKP02



WTSKP01



WTSKP02

SP3 Sleeveless Tri Suit (Full Sub)

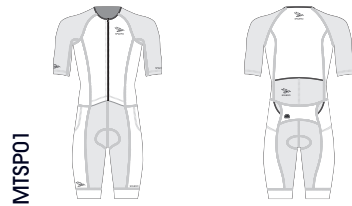
SP3 Sleeveless Tri Suit (Dyed Inner Panel)

- Built from three different Italian fabrics, mesh for heat regulation and breathability, another to accelerate the drying process, and a third for stretch, comfort, and aerodynamics.
- Second skin fit that is compressive without being restrictive while providing optimal aerodynamics.
- Low neckline for comfort and decreased drag.
- Proprietary armhole construction provides protection for the high-chafe region of the armpit.
- 3/4 zip front with semi-auto locking puller for controlled venting.
- Two or three easy-to-reach, sleek but functional back pockets.
- Lightweight gripper keeps leg hems in place whether swimming, cycling or running.
- Premium Italian triathlon chamois provides optimal amount of support during races while staying out or your way and drying quickly.
- UPF 50+ Sun Protection



C  
D  
E  
A  
D  
S

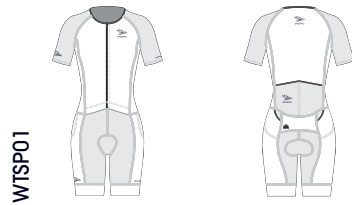
# TRI SUITS



MTSP01



MTSP02



WTSP01



WTSP02

SP3 SS Tri Suit (Full Sub)

SP3 SS Tri Suit (Dyed Inner Panel)

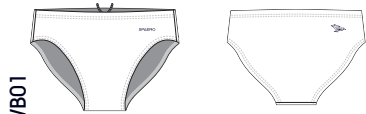
- Built from three different Italian fabrics, mesh for heat regulation and breathability, another to accelerate the drying process, and a third for stretch, comfort, and aerodynamics.
- Second skin fit that is compressive without being restrictive while providing optimal aerodynamics.
- Low neckline for comfort and decreased drag.
- Longer sleeve length for optimal aerodynamics and sun protection.
- Separating zipper finish with semi-auto locking puller for controlled venting.
- Two or three easy-to-reach, sleek but functional back pockets.
- Lightweight gripper keeps leg hems in place whether swimming, cycling or running.
- Premium Italian triathlon chamois provides optimal amount of support during races while staying out or your way and drying quickly.
- UPF 50+ Sun Protection







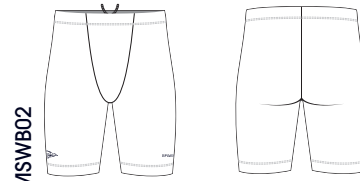
# SWIM



MSWB01

SP2 Swim Brief

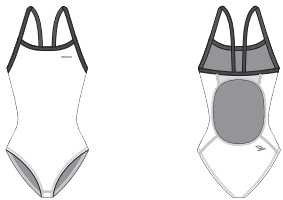
- Drawcord for secure fit
- Front lined
- 50+ UPF



MSWB02

SP2 Swim Jammer

- Drawcord for secure fit
- Front lined
- 50+ UPF



WSW01

SP2 Swimsuit

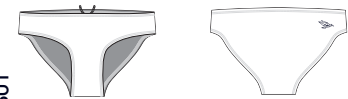
- Wide cross-back straps
- Front lined
- 50+ UPF



WBK02

SP2 Training Bikini Top

- Front lined
- 50+ UPF



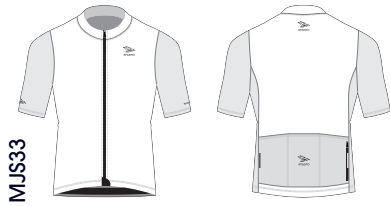
WBKB01

SP2 Training Bikini Bottom

- Drawcord for secure fit
- Front lined
- 50+ UPF







MJS33

- Low-profile collar
- Longer length aerodynamic sleeves
- Full-length locking zipper for controlled venting
- Zipper garage at hem protects bibs
- Pockets:
  - Positioned and tapered for easy entry
  - Reinforced
  - No-Sag Structure keeps gear in place
  - Zip-pocket for securing valuables
- Waist gripper keeps jersey in place
- Reflective trim for visibility
- UPF 30+ Sun Protection



WJS33

SP2 SS Cycling Jersey



MJL08

- Low-profile collar
- Long sleeves for additional sun protection
- Full-length locking zipper for controlled venting
- Zipper garage at hem protects bibs
- Pockets:
  - Positioned and tapered for easy entry
  - Reinforced
  - No-Sag Structure keeps gear in place
  - Zip-pocket for securing valuables
- Waist gripper keeps jersey in place
- Reflective trim for visibility
- UPF 30+ Sun Protection



WJL08

SP2 LS Cycling Jersey



MJL12

- Brushed fleece is naturally moisture-wicking and provides excellent thermal regulation
- Full-length locking zipper for controlled venting
- Zipper garage at hem protects bibs
- Pockets:
  - Positioned and tapered for easy entry
  - Reinforced
  - No-Sag Structure keeps gear in place
  - Zip-pocket for securing valuables
- Waist gripper keeps jersey in place
- Reflective insets and trim for visibility
- UPF 50+ Sun Protection



WJL12

SP2 Thermal LS Jersey T1



MJL13

- Brushed fleece is naturally moisture-wicking and provides excellent thermal regulation
- Full-length locking zipper for controlled venting
- Zipper garage at hem protects bibs
- Pockets:
  - Positioned and tapered for easy entry
  - Reinforced
  - No-Sag Structure keeps gear in place
  - Zip-pocket for securing valuables
- Waist gripper keeps jersey in place
- Reflective insets and trim for visibility
- UPF 50+ Sun Protection



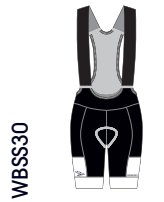
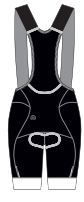
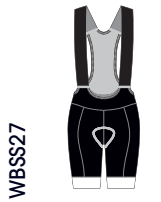
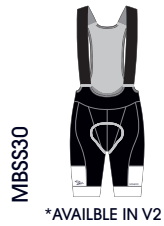
WJL13

SP2 Thermal LS Jersey T2



# CYCLE

12



SP2 Cycle Bib Short (Solid-No Sublimation)

SP2 Cycle Bib Short (Half Inset)

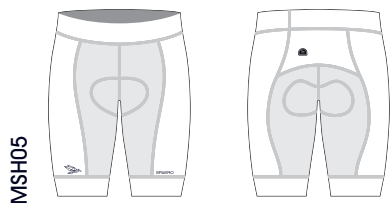
SP2 Cycle Bib Short (Full Print)

SP2 Cycle Bib Short (Side Panel)

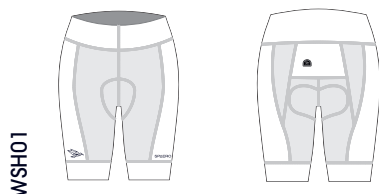
- High-density compressive fabric
  - optimal mix of muscle support and comfort
  - high-opacity prevents see through
  - holds chamois in place to prevent chafing
- Anatomically cut to move with the body in riding position
- Carbon mesh waist and back upper
  - heat dissipation
  - bacteriostatic prevents odor
  - hypo-allergenic
  - additional protection from harmful UV-A and UV-B exposure
- Laser-cut straps lay flat
- Silicone woven leg grippers
  - hypo-allergenic
  - breathable
  - non-slip
- 11" Inseam on medium, scaled up or down according to size
- 9.5" Inseam on men's v2 version
- 8" Inseam on medium, scaled up or down according to size (WOMEN'S SKU)
- Reflective trim for visibility
- UPF 50+



# CYCLE

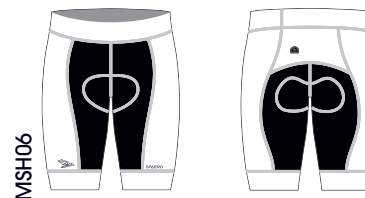


MSH05

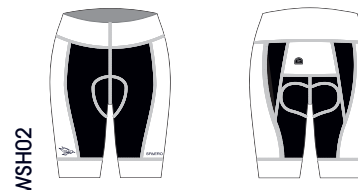


WSH01

SP2 Cycle Short (Full Sub)



MSH06



WSH02

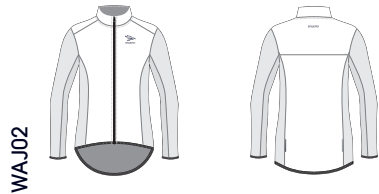
SP2 Cycle Short (Side Panel)

- High-density compressive fabric
  - optimal mix of muscle support and comfort
  - high-opacity prevents see through
  - holds chamois in place to prevent chafing
- Anatomically cut to move with the body in riding position
- Silicone woven leg grippers
  - hypo-allergenic
  - breathable
  - non-slip
- 11" Inseam on medium, scaled up or down according to size
- 8" Inseam on medium, scaled according to size (WOMEN'S SKU)
- Reflective trim for visibility
- UPF 50+





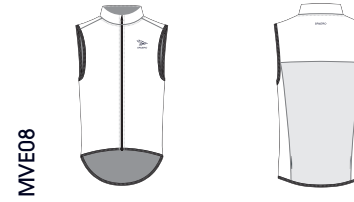
MAJ02



WAJ02

### SP2 Lightweight Packable Cycle Jacket

- Triple-layered fabric
  - Exterior fabric layer with durable water repellent finish
  - Ultra-thin membrane with high level of transpiration and resistance to water
  - Lightly brushed backing for comfort and insulation
- Mesh back panel to prevent overheating
- Two-way separating locking zipper for controlled venting in either direction
- Full length zipper flap for additional weather protection
- Waist gripper keeps jacket in place
- Reflective trim for visibility
- UPF 50+ Sun Protection



MVE08

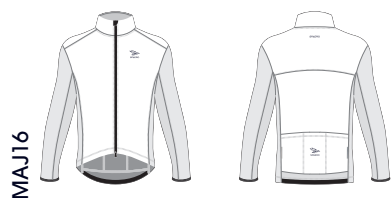


WVE08

### SP2 Lightweight Packable Cycle Vest

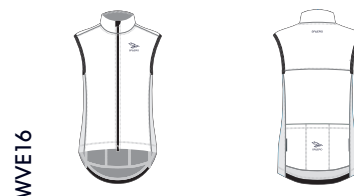
- Triple-layered fabric
  - Exterior fabric layer with durable water repellent finish
  - Ultra-thin membrane with high level of transpiration and resistance to water
  - Lightly brushed backing for comfort and insulation
- Mesh back panel to prevent overheating
- Two-way separating locking zipper for controlled venting in either direction
- Full length zipper flap for additional weather protection
- Waist gripper keeps vest in place
- Reflective trim for visibility
- UPF 50+ Sun Protection





SP2 All-Day Cycle Jacket

- Triple-layered fabric
  - Exterior fabric layer with durable water repellant finish
  - Ultra-thin membrane with high level of transpiration and resistance to water
  - Lightly brushed backing for comfort and insulation
- Mesh back panel to prevent overheating
- Two-way separating locking zipper for controlled venting in either direction
- Full length zipper flap for additional weather protection
- Pockets:
  - Positioned for easy entry
  - Reinforced
  - No-Sag Structure keeps gear in place
- Waist gripper keeps jacket in place
- Reflective trim for visibility
- UPF 50+ Sun Protection



SP2 All-Day Cycle Vest

- Triple-layered fabric
  - Exterior fabric layer with durable water repellant finish
  - Ultra-thin membrane with high level of transpiration and resistance to water
  - Lightly brushed backing for comfort and insulation
- Mesh back panel to prevent overheating
- Two-way separating locking zipper for controlled venting in either direction
- Full length zipper flap for additional weather protection
- Pockets:
  - Positioned for easy entry
  - Reinforced
  - No-Sag Structure keeps gear in place
- Waist gripper keeps vest in place
- Reflective trim for visibility
- UPF 50+ Sun Protection









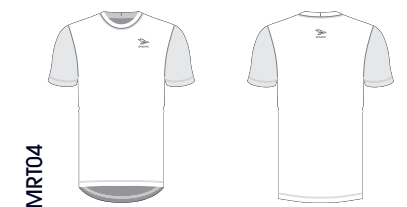
MRL05

- Knitted with a cooling yarn that has been scientifically tested and proven to lower body temperature and create a unique cooling effect on hot days.
- Minimal seams to prevent bunching.
- Reflective trim for visibility
- UPF 50+



WRL05

SP2 LS Tee



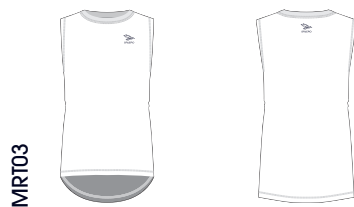
MRT04

- Knitted with a cooling yarn that has been scientifically tested and proven to lower body temperature and create a unique cooling effect on hot days.
- Minimal seams to prevent bunching.
- Reflective trim for visibility
- UPF 50+



WRT04

SP2 SS Tee



MTK03

SP2 Sleeveless Tee

- Knitted with a cooling yarn that has been scientifically tested and proven to lower body temperature and create a unique cooling effect on hot days.
- Minimal seams to prevent bunching.
- Reflective trim for visibility
- UPF 50+



MTK03

SP2 Singlet

- Knitted with a cooling yarn that has been scientifically tested and proven to lower body temperature and create a unique cooling effect on hot days.
- Minimal seams to prevent bunching.
- Reflective trim for visibility
- UPF 50+



WTK04

SP2 Run Tank

- Knitted with a cooling yarn that has been scientifically tested and proven to lower body temperature and create a unique cooling effect on hot days.
- Minimal seams to prevent bunching.
- Reflective trim for visibility
- UPF 50+



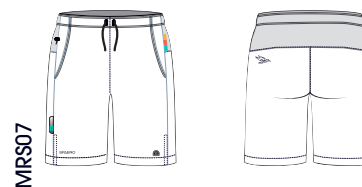
# RUN

18



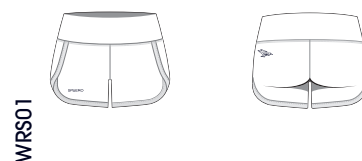
SP2 1/2 Zip Run Top

- A perfect combination of wicking and warmth.
- Interior fibers given a texture similar to peach fuzz to capture warmth.
- Half length locking zipper allows you to control the ventilation.
- Handy chest pocket for your money, snacks, or car keys.
- Cuffed sleeve hem to retain warmth.
- Thumb loops help keep hands warm.
- Reflective trim for visibility
- UPF 50+



SP2 Run Short (8")

- 4-way stretch woven fabric moves with you, not against you.
- Dual hand pockets with right side invisible zippered pocket.
- Drawcord at waist.
- 2" vent on side panel allows freedom of movement.
- 8" Inseam
- Long mesh liner for more support and ventilation.
- Reflective trim for visibility
- UPF 50+ Sun protection.



SP2 Run Short (3")

- 4-way stretch woven fabric moves with you, not against you.
- Flat and wide waistband for a smooth and comfortable fit.
- Front waistband pocket for car keys or energy gel.
- 3" Inseam
- Bikini-brief mesh liner for optimal coverage and breathability.
- Reflective trim for visibility.
- UPF 50+ Sun Protection.





MRS09

SP2 Run Short (5")

- 4-way stretch woven fabric moves with you, not against you.
- Dual hand pockets with right side invisible zippered pocket.
- Drawcord at waist.
- 2" vent on side panel allows freedom of movement.
- 5" Inseam
- Mesh brief liner for support and ventilation.
- Reflective trim for visibility
- UPF 50+ Sun protection.



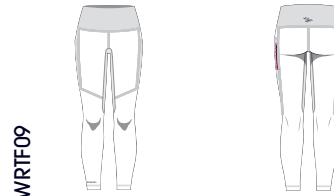
WRS02

SP2 Pocket Jogger

- Poly-spandex blend contours to the body without restricting movement.
- Right leg stash pocket for easy access to your phone or food.
- Left leg zippered pocket to secure your car keys, money, or passport.
- 5" Inseam
- Reflective trim for visibility.
- UPF 50+ Sun Protection.



MRTF09



WRTF09

SP2 Run Tight

- A poly-spandex blend hugs the body without restricting motion.
- Soft waistline band that won't chafe or roll.
- Drawcord at waist. (On Men's)
- Unzippered pocket on right leg allows quick access to your phone or gels.
- Zippered pocket on left leg secures money, ID, or car keys.



# RUN

20



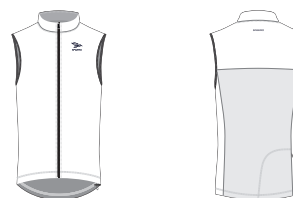
MAJ09



WAJ09

## SP2 Run Jacket

- 4-way stretch woven fabric moves with you, not against you.
- Ultra-lightweight, wind resistant fabric with water repellent finish for protection from the elements.
- Softened elastic hems at the sleeves to prevent chafing.
- Zippered back pocket.
- Locking bungee cord at the waist to keep things in place.
- Reflective trim for visibility.
- UPF 50+ Sun Protection.



MVE12

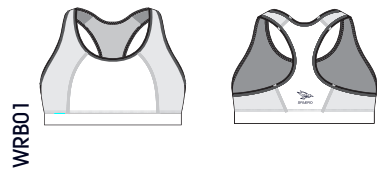


WVE12

## SP2 Run Vest

- 4-way stretch woven fabric moves with you, not against you.
- Ultra-lightweight, wind resistant fabric with water repellent finish for protection from the elements.
- Zippered back pocket.
- Locking bungee cord at the waist to keep things in place.
- Reflective trim for visibility.
- UPF 50+ Sun Protection.

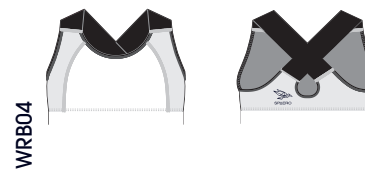




WRB01

### SP2 Racerback Run Bra

- Quick-drying polyester spandex blend.
- Classic racerback cut for optimal range of motion.
- Wide and soft bustband lays flat against the skin.
- Moderate support for A to C cup sizes.
- UPF 50+ Sun Protection



WRB04

### SP2 Crossback Run Bra

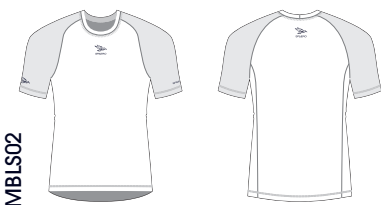
- Wide, soft straps with classic crossback layers lay flat against the body and stay securely in place without digging in.
- Soft binding around front armholes and neckline protects against chafing.
- Wide, soft bust band lays flat against the skin.
- Provides moderate support for cup sizes ranging from A-C.
- UPF 50+ Sun Protection



# ACCESSORIES



MBL02



MBLS02



WBL01



WBLS01

## SP2 Sleeveless Base Layer

- Close to body fit lays flat and won't bunch
- Lightweight mesh fabric allows airflow and provides moisture-wicking to assist in body temperature regulation

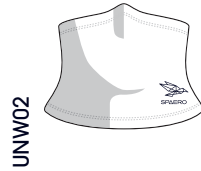
## SP2 Short Sleeve Base Layer

- Close to body fit lays flat and won't bunch
- Lightweight mesh fabric allows airflow and provides moisture-wicking to assist in body temperature regulation



C  
D  
E  
V  
D  
S

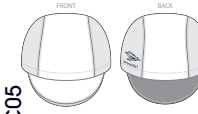
# ACCESSORIES



UNW02

### Neck Gaiter

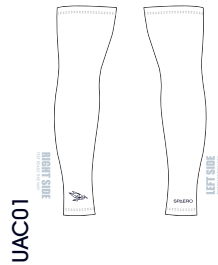
- Soft, lightweight brushed fabric
  - provides reliable protection from the sun's rays
  - insulates against cold and wind
- Folds easily for storage in a pocket



UCC05

### Cycling Cap

- Crafted from versatile, lightweight and breathable stretch woven fabric
- Durable Water Repellant (DWR) for shedding rain
- Soft elastic with antibacterial finish
- Available in two sizes, S/M + L/XL
- 50+ UPF Sun Protection



UAC01

### Arm Cooler

- Premium Italian, lightweight fabrics offer sun protection and breathability
- Contoured cut for comfort and perfect fit
- Lightweight, hypoallergenic silicone gripper to prevent slipping
- UPF 50+ Sun Protection



UAW09

### Arm Warmer

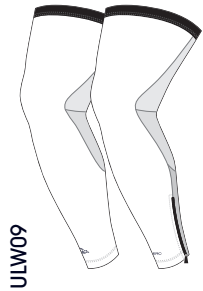
- Light brushed fleece is naturally moisture-wicking and provides excellent thermal regulation
- Contoured cut for comfort and perfect fit
- Flat, lightweight, hypoallergenic silicone gripper to prevent slipping at bicep
- UPF 50+ Sun Protection



UKW09

### Knee Warmer

- Light brushed fleece is naturally moisture-wicking and provides excellent thermal regulation
- Contoured cut for comfort and perfect fit
- Lightweight, hypoallergenic silicone gripper to prevent slipping at thigh and calf
- UPF 50+ Sun Protection



ULW09

### Leg Warmer

- Light brushed fleece is naturally moisture-wicking and provides excellent thermal regulation
- Contoured cut for comfort and perfect fit
- Lightweight, hypoallergenic silicone gripper to prevent slipping at thigh
- Zippered ankle openings for ease
- UPF 50+ Sun Protection











[spaeretri.com](http://spaeretri.com)