

A woman with curly hair is standing on a beach at sunset. She is wearing a long, flowing, two-piece outfit in shades of orange and red with intricate white paisley patterns. The fabric is sheer and billowing in the wind. The background shows the ocean and a clear sky with a warm, golden glow from the setting sun.

coco ribbon

LONDON SYDNEY

SPRING ~ SUMMER ~ 2023



HISTORY

From boutique beginnings in London 2002, to Boheme-Luxe label today, our collections have graced the pages of British Vogue, Harper's Bazaar and Sunday Times Style to name a few and many an A-list celeb. Two decades on and counting style icons like Elle MacPherson, Poppy Delevigne, Kylie Minogue and Sienna Miller from our London days as clients, we continue to dress modern women with smarts and heart, who love to look effortlessly chic.

SUSTAINABILITY

Before sustainability was a thing, Coco Ribbon started Coco Neutral from our Notting Hill store back in 2004. An initiative that sold clients preloved wardrobe pieces in exchange for Coco Ribbon credit notes out of our Notting Hill boutique. Today this ethos of treading gently on the earth has not changed. We ensure our makers meet ethical wage criteria and working conditions whilst the majority of our garments are made from natural fabrics including linen, cotton and silk.

A NOTE FROM THE DESIGNER

I have always been passionate about curating and creating the beautiful and unique. Finding inspiration from living in London, Hong Kong, Kuala Lumpur and New York collectively, and now residing back in Sydney, my collections are invariably infused with elements from each destination. The result is an East-meets-West vibe of timeless garments designed to give women the confidence to stand out from the crowd.

Alison Barton Chow, founder & designer



WWW.COCORIBBON.COM

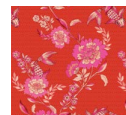


GOLDEN HOUR

Bold and beautiful palettes and intricate prints make this story perfect for those who love colour, volume and detail. Choose from the exotic gold or red chinoiserie Koi styles with pops of peonies to dial up the drama or the Blue Marlin medley which channels Mediterranean chic.



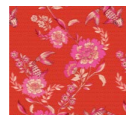
RAFFLES BLOUSE
SHELL: 100% SILK GEORGETTE
XS, S, M, L



RED & FUCHSIA
KOI PRINT



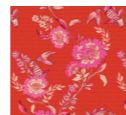
RAFFLES MAXI DRESS
SHELL: 100% SILK GEORGETTE
LINING: 100% SILK HABUTAI
XS, S, M, L



RED & FUCHSIA
KOI PRINT



RAFFLES SHORT DRESS
SHELL: 100% SILK GEORGETTE
LINING: 100% POLYESTER
XS, S, M, L



RED & FUCHSIA
KOI PRINT





GOLDEN HOUR DRESS
SHELL: 100% STRETCH SATIN POLYESTER
LINING: 100% SILK
XS, S, M, L



GOLD KOI PRINT



BLUE MARLIN BLOUSE AND BLUE MARLIN SKIRT
 SELF AND FABRIC SASH: 100% RAMIE
 LINING: FRENCH CREPE POLY
 XS, S, M, L



BLUE MARLIN PRINT



BLUE MARLIN BLOUSE
 SELF AND FABRIC SASH: 100% RAMIE
 LINING: FRENCH CREPE POLY
 XS, S, M, L



BLUE MARLIN PRINT



BLUE MARLIN DRESS
 SELF AND FABRIC SASH: 100% RAMIE
 LINING: FRENCH CREPE POLY
 XS, S, M, L, XL



BLUE MARLIN PRINT

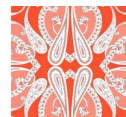


HALCYON DAYS

If there is such a thing as the perfect paisley, this would be it. Crafted in silk satins and chiffon, these styles will elevate your look with a whimsical yet luxe vibe. From elegant everyday, to vacay to evening goddess, Halcyon Days harks back to a time of unashamed opulence and femininity.

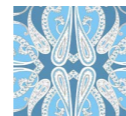


MARRAKESH SUNSET MAXI DRESS
SHELL: 100% MULBERRY SILK
LINING: 97% POLY 3% SPANDEX
XS, S, M, L



ORANGE
PAISLEY

OPPOSITE
SEE YOU IN ST. TROPEZ MAXI DRESS
SHELL: 100% MULBERRY SILK
LINING: 97% POLY 3% SPANDEX
XS, S, M, L



BLUE
PAISLEY





BOUJIS NIGHTS DRESS
SHELL: 100% MULBERRY SILK
LINING: 97% POLY 3% SPANDEX
XS, S, M, L



BLUE PAISLEY



RAINBOW ROOM DRESS
SHELL: SILK SATIN (100% SILK)
LINING: HABUTAI (100% SILK)
XS, S, M, L

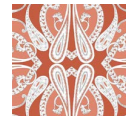


BLUE, CARAMEL & LAVENDER PAISLEY





ALMALFI BLOUSE AND SANTORINI SHORTS
 SHELL: SILK SATIN (100% SILK)
 LINING SLEEVES:
 HABUTAI (100% SILK)
 XS, S, M, L, XL



CARAMEL
 PAISLEY

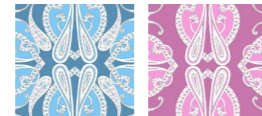
SHORTS
 SHELL AND SASH: 100% LINEN
 XS, S, M, L



PURPLE TOFFEE

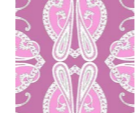


BELLAGIO BLOUSE
 SHELL: 100 GRMS STRETCH SILK SATIN
 (97% SILK, 3% ELASTIC)
 XS, S, M, L, XL



BLUE
 PAISLEY LAVENDER
 PAISLEY

BELLAGIO BLOUSE
 SHELL: 100 GRMS
 STRETCH SILK SATIN
 (97% SILK, 3% ELASTIC)
 XS, S, M, L, XL



LAVENDER
 PAISLEY

SANTORINI SHORTS
 SHELL AND SASH: 100% LINEN
 XS, S, M, L



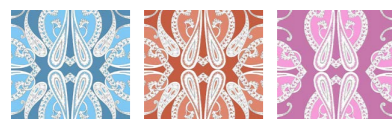
PURPLE TOFFEE



AUGUST ~ SEPTEMBER 2023



BY THE SEA KAFTAN
SHELL AND SASH: SILK SATIN (100% SILK)
S/M or M/L



BLUE, CARAMEL & LAVENDER PAISLEY





CALYPSO ROSE

*Scalloped print border details whisper Boho Chic
in this story where for the first time, a luxe silk-to-the-touch fabric
has been used, made exquisitely from Rose Petals. Pair blouses and skirts together
for the prettiest ensembles or dress down as separates with denim and slides.*



INDIAN ROSE DRESS
COMES IN TWO FABRICATIONS: SATIN
ROSE PETAL OR LINEN COTTON MIX
XS, S, M, L, XL



INDIAN ROSE
SATIN ROSE PETAL



CALYPSO ROSE DRESS
LINEN COTTON MIX
XS, S, M, L, XL



CALYPSO ROSE



CALYPSO ROSE BLOUSE AND SHORT
LINEN COTTON MIX
XS, S, M, L, XL



CALYPSO ROSE

**CALYPSO ROSE BLOUSE
AND SKIRT**
LINEN COTTON MIX
XS, S, M, L, XL



CALYPSO ROSE

NOT SHOWN
**INDIAN ROSE BLOUSE
AND SKIRT**
LINEN COTTON MIX
XS, S, M, L, XL



INDIAN ROSE





CAPE AMARIN

Fall in love with our signature linen range which is cool and soft to the touch and perfect for beach-to-bar transitions. Robes look stylish over a swimsuit and shade skin from the sun, whilst generous pockets hold phones and keys. All styles in this story are timeless summer favourites which will be reached for again and again.



CAPE AMARIN BEACH TO BAR SHORT ROBE AND LONG ROBE SHELL AND SASH: 100% RAMIE
XS, S, M, L, XL



BLUE



TOFFEE





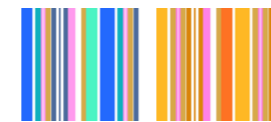
DAY DREAMER SHIRT AND DAY DREAMER SHORT
100% RAMIE
XS, S, M, L



MULTI RAINBOW STRIPE SUNSHINE STRIPE

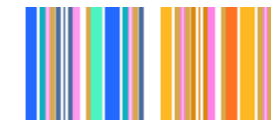


I'D RATHER BE IN CAPRI DRESS
SHELL AND SASH: 100% RAMIE
XS, S, M, L



MULTI RAINBOW STRIPE SUNSHINE STRIPE

CAPE AMARIN BEACH TO BAR SHORT AND LONG ROBE
SHELL AND SASH: 100% RAMIE
XS, S, M, L



MULTI RAINBOW STRIPE SUNSHINE STRIPE

