

JADE

This is the **Service** page for the Jade.

To access the **Set Up** page click [HERE](#)

To access the **Tuning** page click [HERE](#)

To access the **OWNER'S MANUAL** click [HERE](#)

JADE SERVICE

FULL SERVICE

Click the link below to view the guide

[Jade Damper v4](#)

[View Page](#)

SERVICE INTERVALS

Maintenance

Inspect the Exterior of the Shock for any Damage and the Adjusters are functioning Properly

Check Bushings for Wear & Play

Check Bladder Pressure 160-200PSI

Clean Shaft & Inspect for Scratches or Damage

Full Service- Damper Rebuild and Seal Replace

Replace Bladder

Maintenance

Interval

Regularly

Regularly

Every ride

Every ride

100 hours

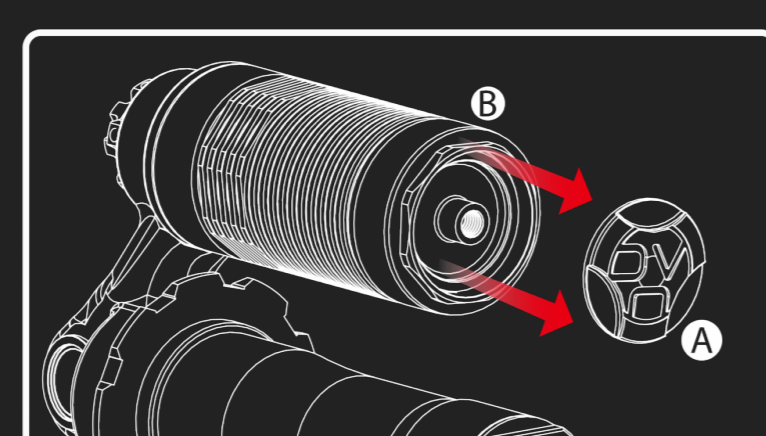
100 hours

[View Page](#)

BLADDER

The Jade Coil features a bladder in place of a traditional IFP (Internal Floating Piston) for optimum small bump sensitivity. The purpose of the bladder is to separate the air from the oil in the reservoir. To achieve the best performance and durability, it is extremely important to set the air pressure to the proper range.

1. Remove air cap (A) to access air valve (B). Thread on a suspension specific pump and apply air pressure within the proper range. 160-200 psi.



[View Page](#)

IGUS BUSHINGS & MOUNTING HARDWARE

Info Coming Soon... Hang Tight!

[View Page](#)

TORQUE SPECS

Info Coming Soon... Hang Tight!

[View Page](#)

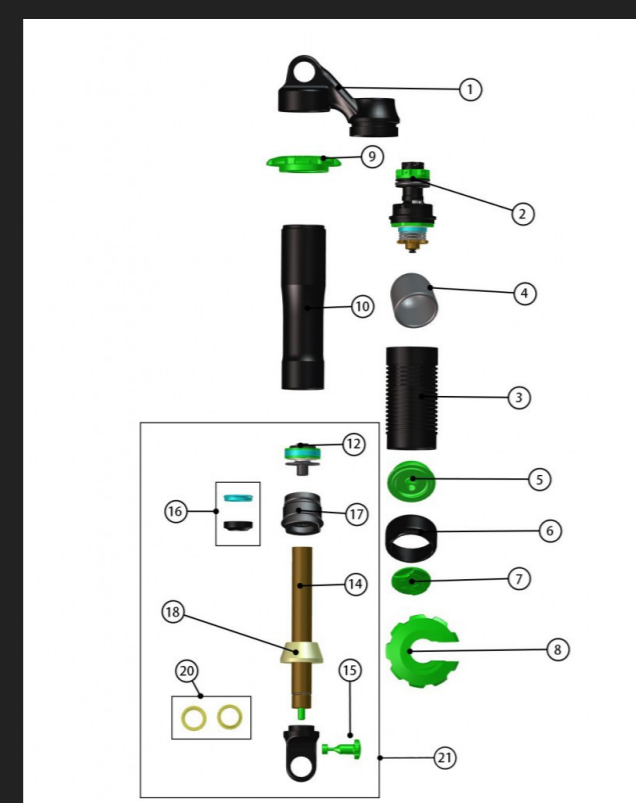
CRASH & VISUAL INSPECTION

After a crash, do not ride your bicycle, if any one of the following test criteria is not passed! Riding your bike without eliminating any defect or carrying out the necessary adjustments can result in an accident, serious injury or even death.

- After a crash, Do you notice any cracks, dents, bent or tarnished parts of your suspension fork or any other part of your bicycle? If so, please contact a trained and qualified bicycle mechanic to check your fork and/or complete bike.
- Can you notice any oil leaking out of your fork? Check hidden areas like behind the fork guard under the crown and main seals. If so, please consult a trained and qualified bicycle mechanic to check your fork or bike.
- Make sure your wheels are perfectly centered in order to avoid any contact with suspension fork or brake system. Check and see if your handlebars are aligned with the front wheel
- If the wheel is not aligned with your handlebars, please inspect the fork for damage and re-adjust fork in the clamps. Refer to fork installation guide for proper set-up and torque specs.

[View Page](#)

SPARE PARTS LIST



[Click on image to view full size](#)

| Reference # | Part Number | Description |
|-------------|-----------------|---------------------------------|
| 1 | 1421010 | Housing |
| 2 | 1429002 | Compression Assembly |
| 3 | 1421012 | Reservoir Body |
| 4 | 1421003 | Bladder |
| 5 | 1421004 | Bladder Air Cap |
| 6 | 1421007 | Air Cap Lock Nut |
| 7 | 1421001 | Air Cap |
| 8 | 1421013 | Spring Clip |
| 9 | 1421011 | Preload Collar |
| 10 | 1421009-225 | Main Body 2.25 |
| 10 | 1421009-275/250 | Main Body 2.75/2.5 |
| 10 | 1421009-300 | Main Body 3.0 |
| 10 | 1421009-350 | Main Body 3.5 |
| 12 | 1429004 | Piston Bolt Group (EXCEPT 3.5") |
| 12 | 1429004-350 | Piston Bolt Group (3.5" Only) |
| 14 | 1421017-225 | 14mm Shaft 2.25 |
| 14 | 1421017-250 | 14mm Shaft 2.5 |
| 14 | 1421017-275 | 14mm Shaft 2.75 |
| 14 | 1421017-300 | 14mm Shaft 3.0 |
| 14 | 1421017-350 | 14mm Shaft 3.5 |
| 15 | 1421018 | Rebound Adjuster Knob |
| 16 | 1429006 | Seal/Repair Kit |
| 18 | 1421014 | Bumper |
| 20 | 1429020 | IGUS DU Bushings Kit |
| 21 | 1429001-225 | Shaft Assembly Kit 225 |
| 21 | 1429001-250 | Shaft Assembly Kit 250 |
| 21 | 1429001-275 | Shaft Assembly Kit 275 |
| 21 | 1429001-300 | Shaft Assembly Kit 300 |
| 21 | 1429001-350 | Shaft Assembly Kit 350 |
| | 1429007 | Shim Kit |

[View Page](#)