



## DESIGNED BY

Kevin Boland

## CHARACTERISTICS

Curvaceous | Cocooning | Pampering

## COLLECTION

The Tamaru day bed, complete with half moon side tables, takes on a natural form inspired by a shape of sea coves. Curvaceous and cocooning in design, the traditional caning weave style hints of tranquil bygone days. Perfect for curling up with a good book or loved one.

## CUSTOMISATION

Choose your Rehau® fibre colour and Sunbrella® cushion colours to style it your way. Make the final statement with OHMM® Accent cushions.

# TAMARU SPEC SHEETS

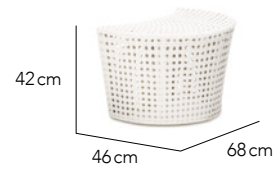


Tabula Rasa

## Day Bed



## Half Moon Side Table



## FIBRE

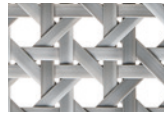
7mm Caning Weave



Marble



Chalk



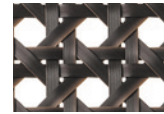
Clay



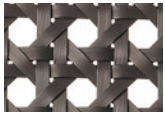
Sand



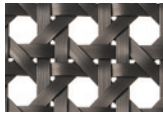
Natural



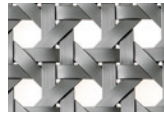
Java



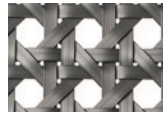
Mocca



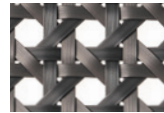
Bronze



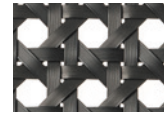
Silver



Platinum



Titanium



Carbon

## CUSHIONS

For your options please see fabrics & cushions specs on [www.ohmm.sg](http://www.ohmm.sg)

Day Bed Back Cushions

45cm x 60cm | 18" x 24" (4 pcs)

35cm x 35cm | 14" x 14" (3 pcs)