

FlowCytes®
Non-Fixed WBC Mimics
SSB-04-C

Summary FlowCytes® synthetic white blood cells (WBC) are shelf stable hydrogels that mimic the optical properties of non-fixed human blood populations for lymphocytes, monocytes, and granulocytes. This product contains no biological material so it is safe to use in any environment and requires no special disposal. There is no sample preparation needed, unlike traditional biological controls.

Application FlowCytes synthetic WBC are intended as forward and side scatter controls for the identification and analysis of non-fixed whole blood populations and other cell types. This product can be used to calibrate and evaluate flow cytometry instrumentation or as a control in an assay to standardize gating.

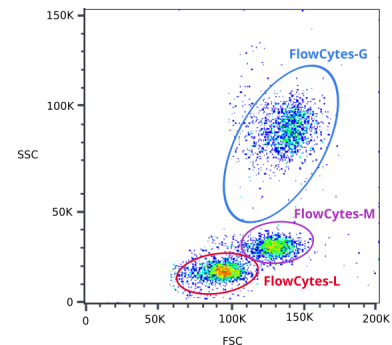
For Research Use Only. Not for use in diagnostic or therapeutic procedures.

Materials FlowCytes are hydrogels that are suspended in aqueous solution and are packaged in a convenient dropper bottle. Each bottle contains approximately 2.5×10^6 particles/mL.

Handling & Safety No special handling or safety precautions are necessary. See SDS at www.slingshotbio.com.

Instruction for Use

1. Vortex bottle on high for 2-3 seconds to resuspend FlowCytes
2. Add 1 drop to 100 μ L of PBS or sheath fluid
3. Vortex mixture on high for 2 seconds to mix thoroughly
4. View and acquire FlowCytes in FSC-A and SSC-A using the same instrument settings as real whole blood cells
5. For best results, set the flow rate on the cytometer to low



Storage FlowCytes can be stored at 2-30°C.

Slingshot Biosciences, Inc.
1250 45th Street, Suite 330
Emeryville, CA 94608
USA

Contact: ops@slingshotbio.com
www.slingshotbio.com



SLINGSHOT