



MOUNTAIN MIKE'S™

YOUR HOME FOR DO-IT-YOURSELF
MOUNTING SOLUTIONS.



SKULL MASTER & BLACK FOREST

ANTLER MOUNTING KITS

POSITIONER & ULTRA POSITIONER

ADJUSTABLE SKULL DISPLAY BRACKETS

MORE THAN JUST DEER

BEARD COLLECTOR™

&

ULTIMATE TURKEY PLAQUE

TURKEY MOUNTING KITS

SKULL MASTER

The look of a classic European mount with none of the hassle, our **Skull Master Antler Mounting Kits** make it easy to proudly display harvested or shed antlers. No beetles, no boiling, no worrying about transporting a full skull from a hunting site. With the Skull Master, you attach your antlers to the ultra-realistic faux skull, giving you a secure base for your antlers while maintaining a natural look.

4 SIZES TO FIT ANY ANTLERS

Skull Master mounts come in four sizes to fit any antlers (based on antler circumference) and include all basic mounting equipment you need.

SMALL

Less than 3"

MEDIUM

3" to 4 7/8"

LARGE

More than 5"

UNIVERSAL

Two skull plate sections (Small & Medium) to fit all antler sizes

SKULL MASTER

ANTLER MOUNTING KITS



SKULL MASTER, CLASSIC WHITE

#MMR-SML, #MMR-SMM, #MMR-SMYB, #MMR-SM



NATURAL CAUSES

#MMR-SMLNC, #MMR-SMMNC, #MMR-SMYBNC, #MMR-SMNC



CLASSIC WHITE

#MMR-SML, #MMR-SMM, #MMR-SMYB, #MMR-SM



SNOW CAMO

#MMR-SMLSC, #MMR-SMMSC, #MMR-SMYBSC, #MMR-SMSC



FALL FOLIAGE CAMO

#MMR-SMLFC, #MMR-SMMFC, #MMR-SMYBFC, #MMR-SMFC



AMERICAN FLAG

#MMR-SMLRF, #MMR-SMMRF, #MMR-SMYBRF, #MMR-SMRF

SKULL MASTER

ALL-NATURAL

For the most natural look, choose the Natural Causes finish. Unlike a pure bleached white, Natural Causes features a more dimensional finish, creating a rustic look for your mount.

FOR THE BOLD

If the natural look isn't for you, Skull Master mounts are available in eye-catching dipped designs that put a unique twist on your displayed mount.



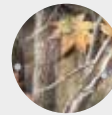
NATURAL CAUSES



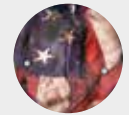
CLASSIC WHITE



SNOW CAMO



FALL FOLIAGE CAMO



AMERICAN FLAG

AVAILABLE DIPS

BLACK FOREST

ANTLER MOUNTING KIT



BLACK FOREST MOUNTING KIT

#MMR-BF

LIGHTWEIGHT
PLAQUE



TWO INTERCHANGEABLE
SKULL PLATES TO FIT
ALL ANTLERS



TRADITIONAL
HALF SKULL
MOUNT



From the dark forests of Germany to your own home, this mounting solution gives you all the benefits of our Skull Master mounts with the addition of a handsome plaque for a more traditional mount, without the exorbitant price tag from a professional taxidermist.

POSITIONER & ULTRA POSITIONER

ADJUSTABLE SKULL DISPLAY BRACKETS

THE RIGHT POSITION

A skull's position on the wall can bring life to your hard-won hunting trophies. Mountain Mike's positioners make it easy to hang your mounts at just the right angle, whether you've used a Skull Master kit or are hanging a real skull.



ULTRA
POSITIONER

#MMR-NUP



POSITIONER

#MMR-DP

POSITIONER

#MMR-DP



ULTRA
POSITIONER

POSITIONER #MMR-DP

Adjustable vertical angle | Easy to install | Comes in two sizes for medium and large sized game

ULTRA POSITIONER #MMR-NUP

Full 360° rotation | Easy to install and reposition | Fits all medium to large sized game

MOUNTAIN
MIKE'S™

MORE THAN JUST DEER

Deer aren't the only game you should immortalize on your walls. Celebrate your turkey hunts with one of these do-it-yourself mounting solutions.

BEARD COLLECTOR™ & ULTIMATE TURKEY PLAQUE

TURKEY MOUNTING KITS

BEARD COLLECTOR™

BEARD COLLECTOR
#MMR-BC

FEATURES #MMR-BC

- | |
|--|
| Holds 1 turkey fan, 1 pair of feet, and 5 beards |
| Shotgun shell beard hold downs |
| Custom leather finish |



ULTIMATE TURKEY PLAQUE

FEATURES #MMR-UTP

- | |
|--|
| Holds 1 turkey fan, wings, 2 feet, and 1 beard |
| Pre-mounted replica turkey skull |
| Shotgun shell beard hold downs |
| Solid pine wood |

ULTIMATE TURKEY PLAQUE

#MMR-UTP