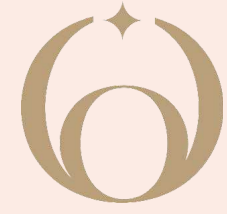


FAR FROM THE ORDINARY



**BOWTERRA**





## A PLACE LIKE NO OTHER

BOWTERRA, where rustic luxury meets boundless freedom. A hetero-friendly sanctuary for open-minded individuals who aspire to grow, discover, learn, and thrive within a community. A place defined by the people who inhabit it. Those that live in the now and engage with the world around them.

# Explore Yourself **TARGET GROUP**

## THE SITUATION

Aside from a few gay-friendly hotels and resorts there isn't much on the global market designed for the LGBTQ+ community.



## THE OPERTUNITY

Answer the demand for a highly interesting and financially sound target group for places dedicated to the LGBTQ+ community



## THE SPECIFIC VALUE

Career Focused

Double Income

No Kids

Trendsetter

Fond Of Traveling

Consumption-Oriented

Sophisticated

Desire For A High  
Standard Of Aesthetics

Etc.





# BRAND

BOWTERRA AG

Committed to developing and expanding a global brand designed for a diverse, hetero-friendly community.

The global brand ensures consistency and trust.

The portfolio will include resorts, residential developments, extended-stay hotels, retirement homes, and other forms of hospitality.

# RETREATS

LOCAL SPV'S

Various projects will be developed in key locations, including Spain, Italy, Greece, Malta, Bali, California, Florida, Mexico and more.

*\*A special purpose vehicle (SPV) is a subsidiary company that is formed to undertake a specific business purpose or activity.*

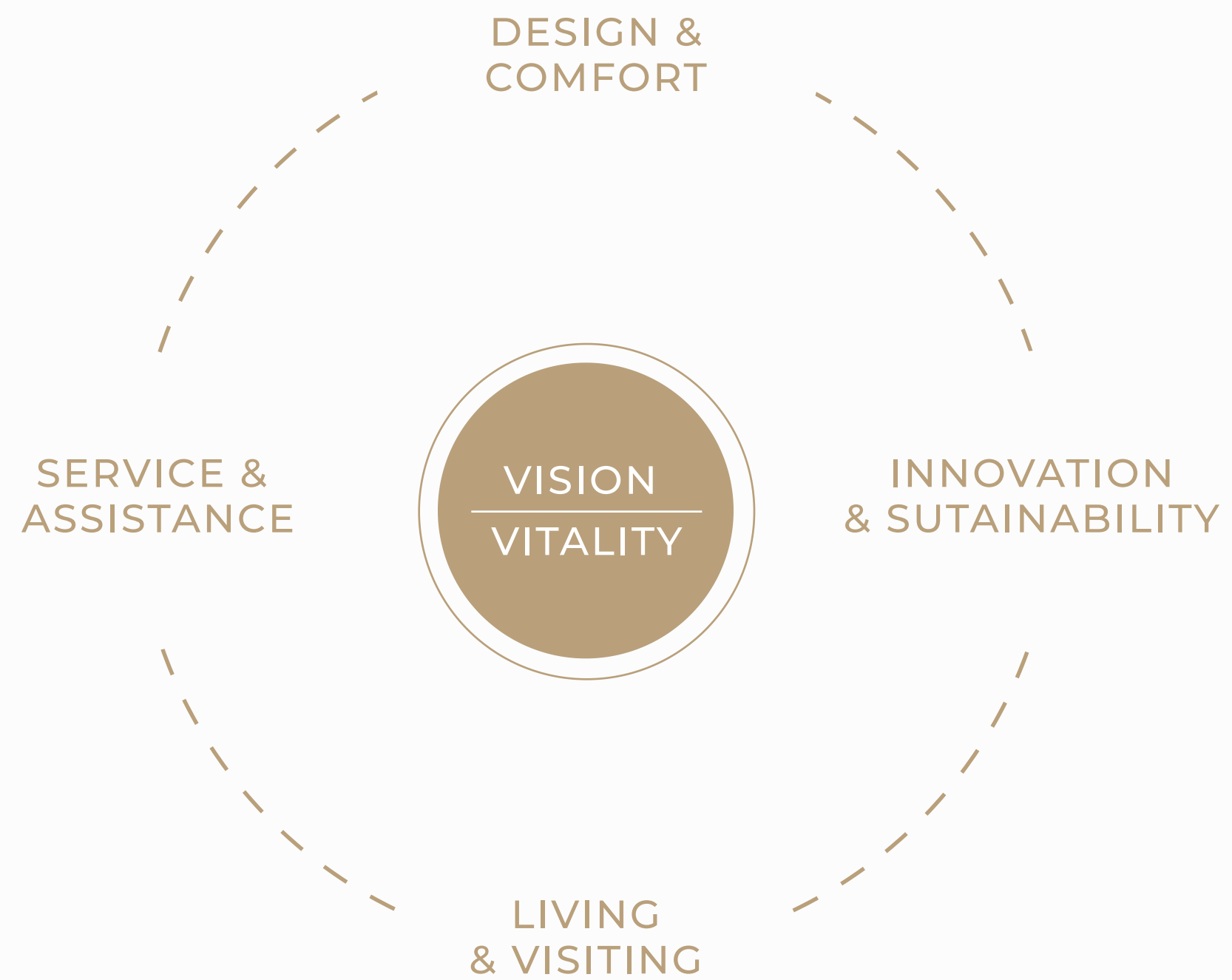


- 1 BOWTERRA UNIVERSE  
*A Unique & Holistic Approach*
- 2 INNOVATION & SUSTAINABILITY  
*An Holistic Approach Of Living*
- 3 SERVICED HOUSING & RESORT  
*A Versatile Offer For An Easy & Pleasant Life*
- 4 LIVING & VISITING  
*Real Estate & Accommodations*
- 5 THE COMMUNITY  
*Heartbeat & Spirit*
- 6 APPENDIX  
*Project ONE / MUDAR Brochure*



# 1 BOWTERRA UNIVERSE

*A Unique & Holistic Approach*



BOWTERRA will develop multiple projects to tap into the sophisticated global LGBTQ+ market and create places with a unique character. A flexible living and visiting model ensures a steady flow of people, pouring new energy and vitality into the community. BOWTERRA entices customers by offering a one-of-a-kind experience and a guarantee of excellence.

V  
I  
S  
I  
O  
N





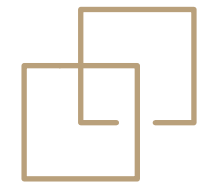
## INNOVATION & SUSTAINABILITY

By merging innovative technologies with contemporary design, our partner MUDAR offers smart and sustainable housing that lessens the environmental impact, improves the overall quality of life and is an essential part of the BOWTERRA universe.

For detailed explanation see attached presentation: MUDAR - built different



# REINVENTING THE WAY WE LIVE BY COMBINING TRAILBLAZING CONCEPTS & TECHNOLOGY



Modular & Scalable  
Housing Solutions



Smart Building  
Service Technology



Renewable & Sustainable  
Energy Solutions



Integral Implementations  
of Technologies & Innovations





# 3

## SERVICED HOUSING & RESORT *A Versatile Offer For An Easy & Pleasant Life*



CONCIERGE  
& RECEPTION

RESTAURANT

CAFÉ

BAR

SPA & WELLBEING

HEALTH & MEDICAL  
SERVICES

POOL & JACUZZI

GYM

EVENT BUILDING

CIGAR ROOM

LIBRARY

ELECTRIC FLEET

Etc.

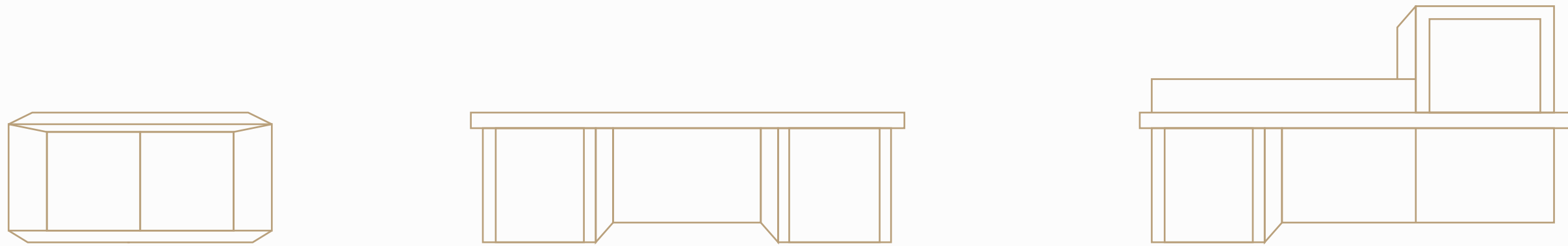


# 4

## LIVING & VISITING *Real Estate & Accommodations*



# LIVING



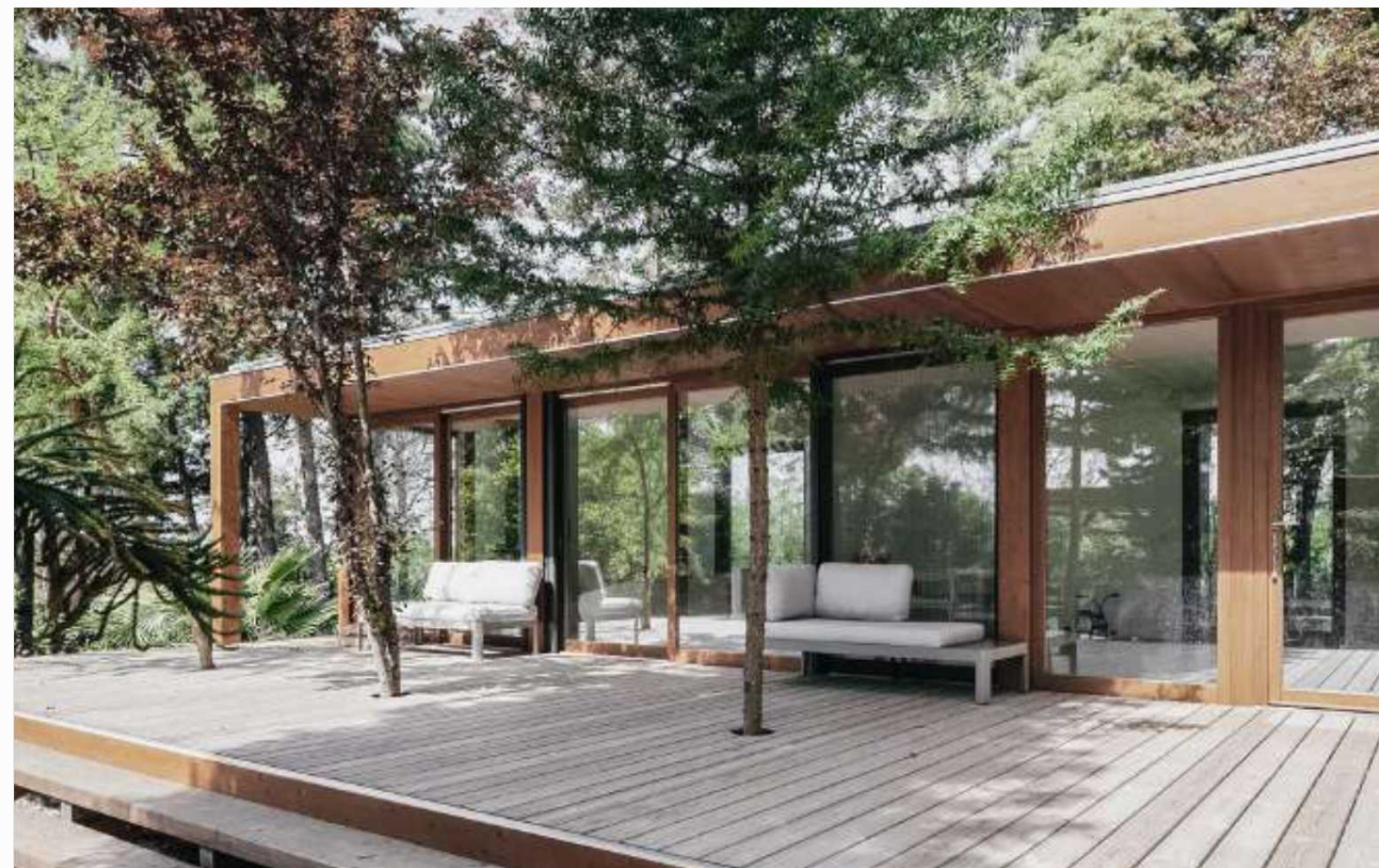
## VILLAS, HOUSES & APARTMENTS

Full-serviced villas, houses and apartments will be available for purchase to become a resident of the bowterra community.

Every Bowterra estate will have a unique signature & character.

Rental services available through operating company.





# VISITING

## ACCOMMODATIONS

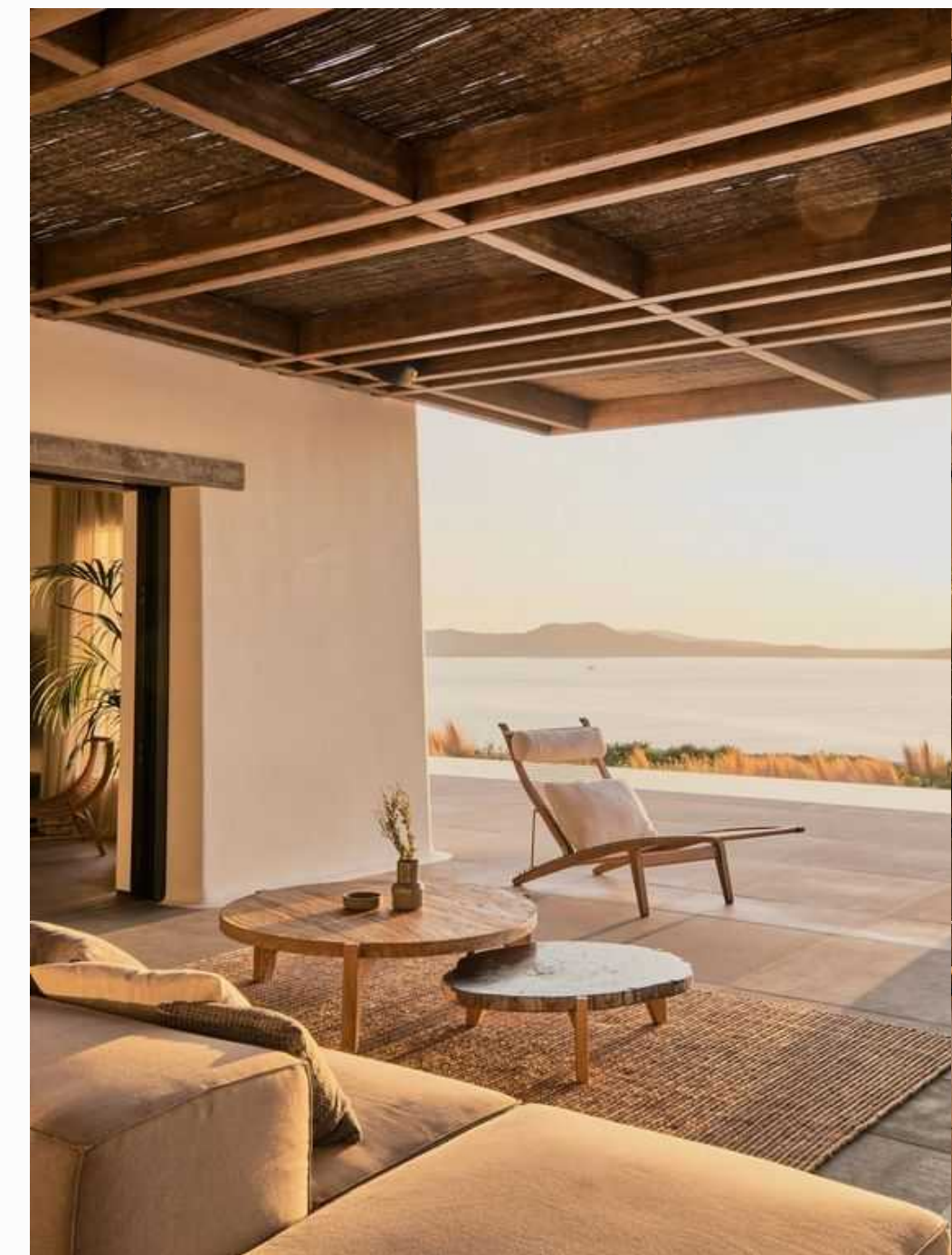
Attract people of the Gay community & create constant flow of new guests.

Customers for restaurant, events, courses etc.

Create constant revenue stream.

Fill the BOWTERRA community with life.

Owned or managed by operating company







# 5

## THE COMMUNITY

### *Heartbeat & Spirit*

Living with our gay family & friends in a heterofriendly environment.

A community makes us feel safe, valued and at home.

Bowterra; a place to unwind, form friendships, and regain your vitality.

Engaging with other people keeps us alive and connected.

A community introduces us to things we might not otherwise encounter. The possibilities are endless, both in terms of what we can learn and accomplish.



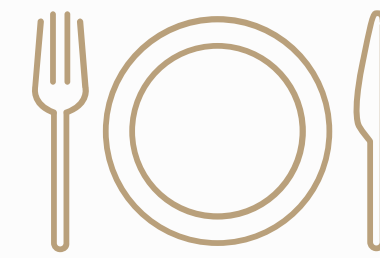
# A HEALTHY & EXCITING LIFE



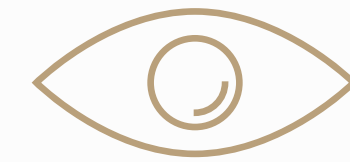
Events &  
Entertainment



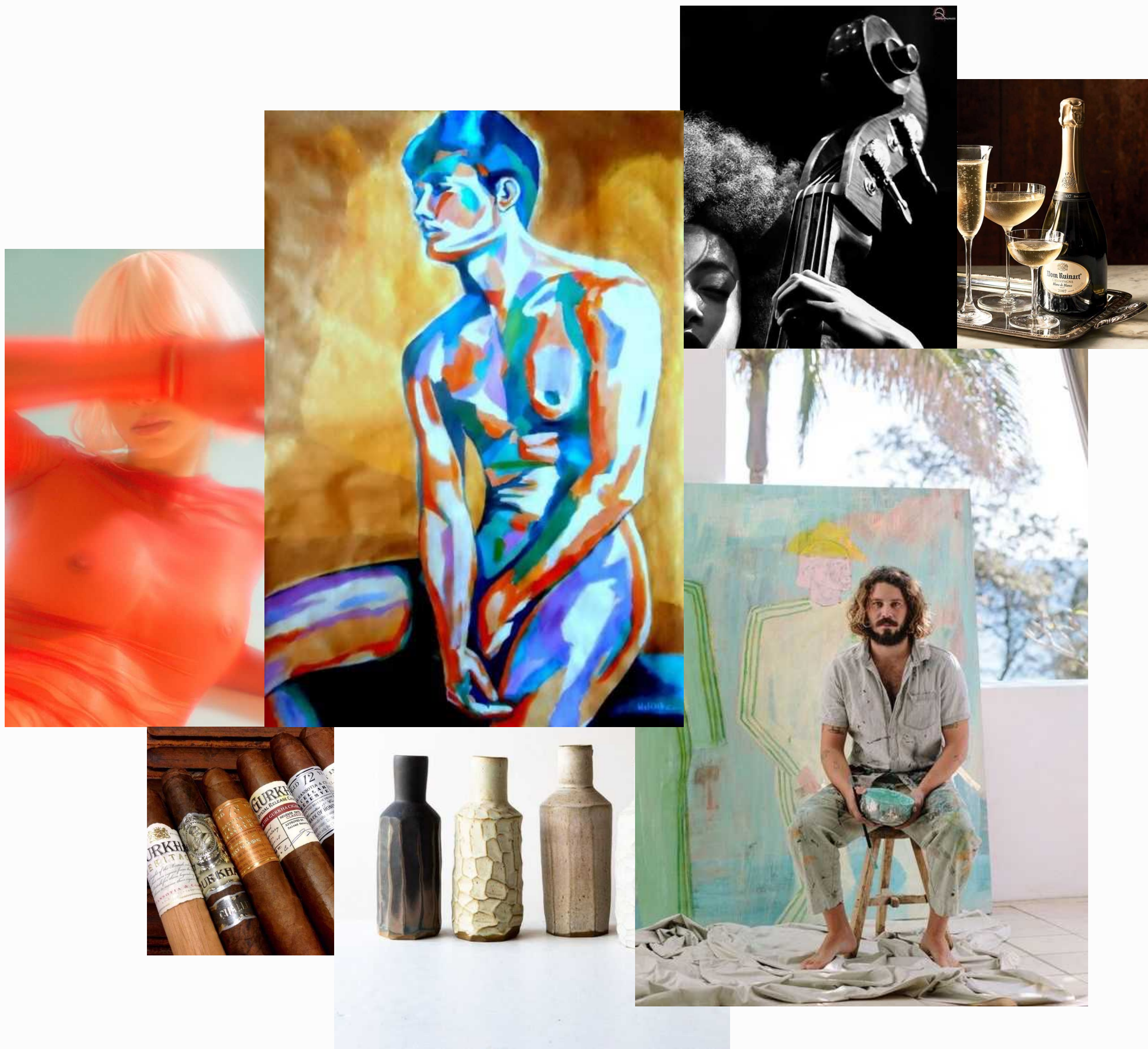
Health &  
Wellbeing



Food  
& Goods



Spirituality &  
Consciousness



## EVENTS & ENTERTAINMENT

### Trips & Excursions

*Shopping Tours, Bar Tours, Beach Transfers*

### Events

*Pool Tea Dance, Christmas, News Years Eve, Easter, Halloween, Clubbing etc.*

### Movie Nights

### Workshops

*Languages, Pottery, Painting, Dancing, Photography, Stonemason etc.*

### Readings & Speeches

### Concerts

### Tastings & Further Education

*Wine, Cigars, Whiskey, Champagne*

# HEALTH & WELLBEING

Sport Program

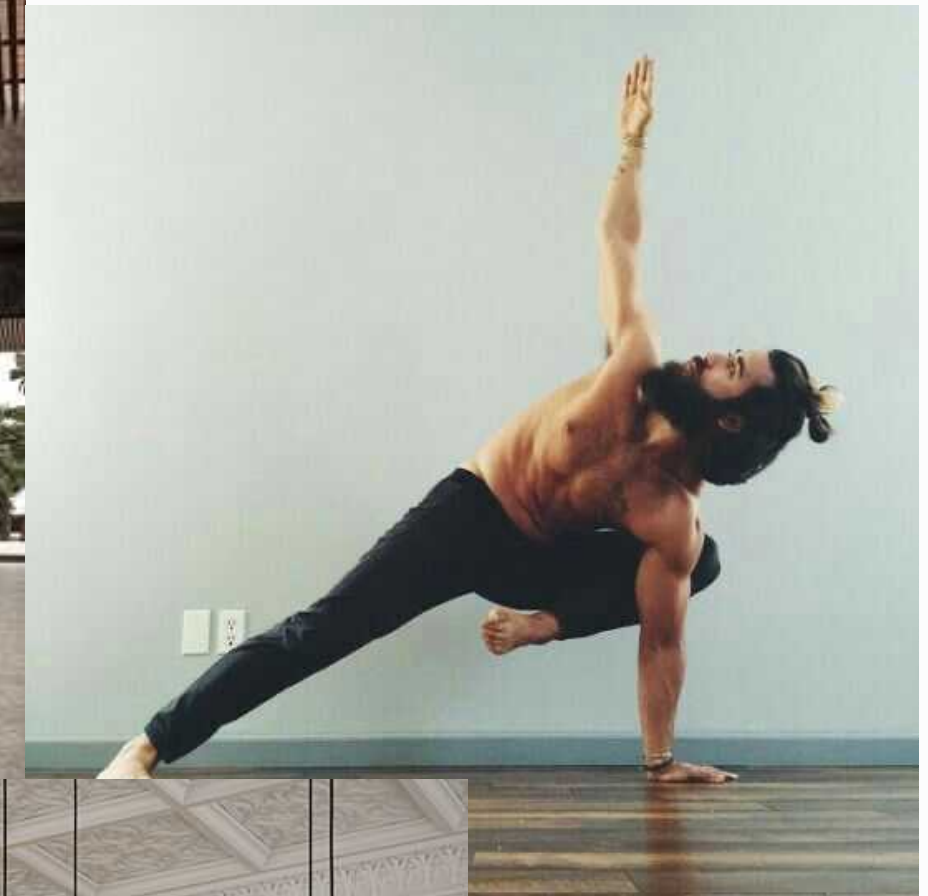
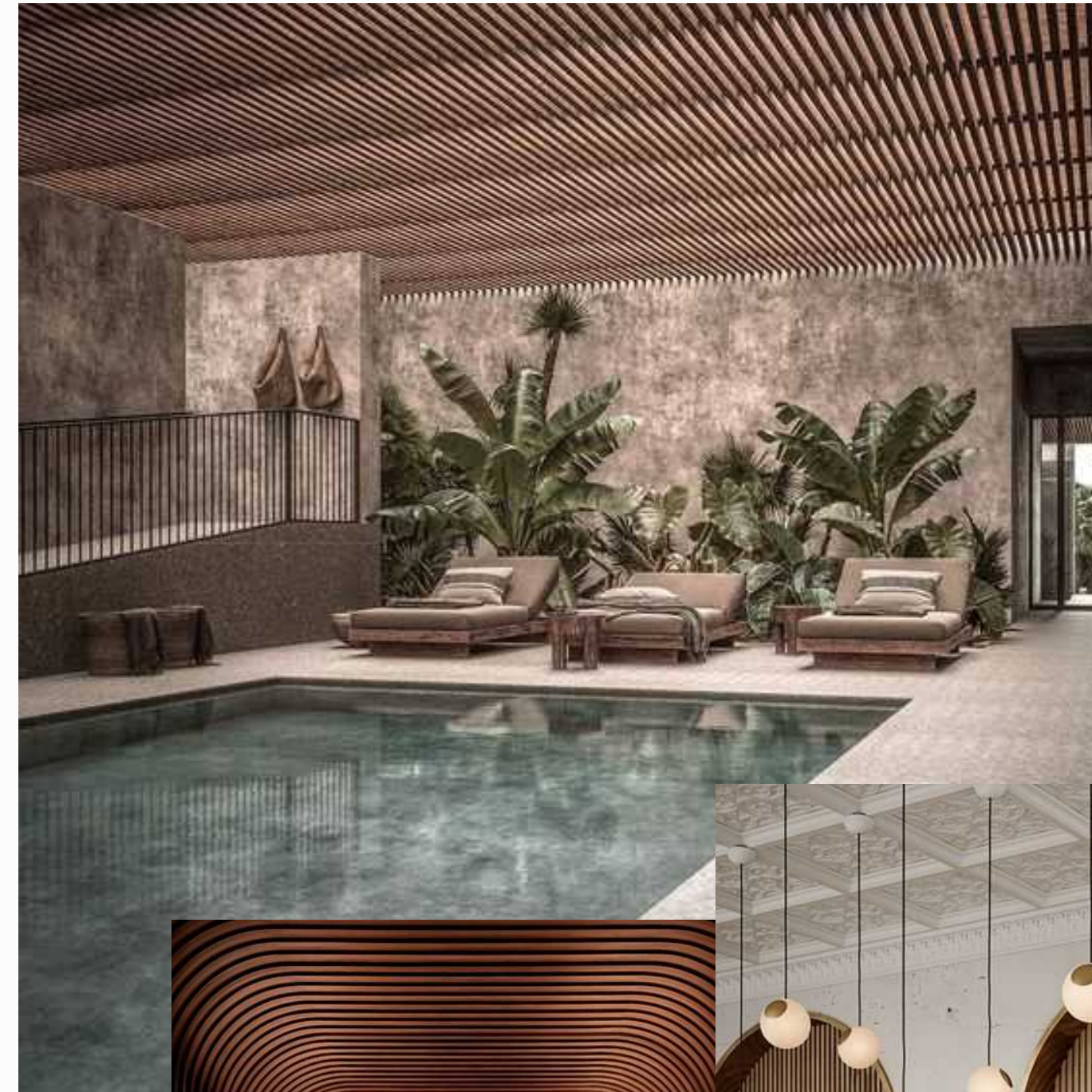
Yoga & Meditation

Massages

Medical Assistance

Medical Treatments

Cosmetic Treatments





## FOOD & GOODS

Grocery Service &  
Food Basket Delivery

Educational Assistance

Participate In Organic  
Gardening

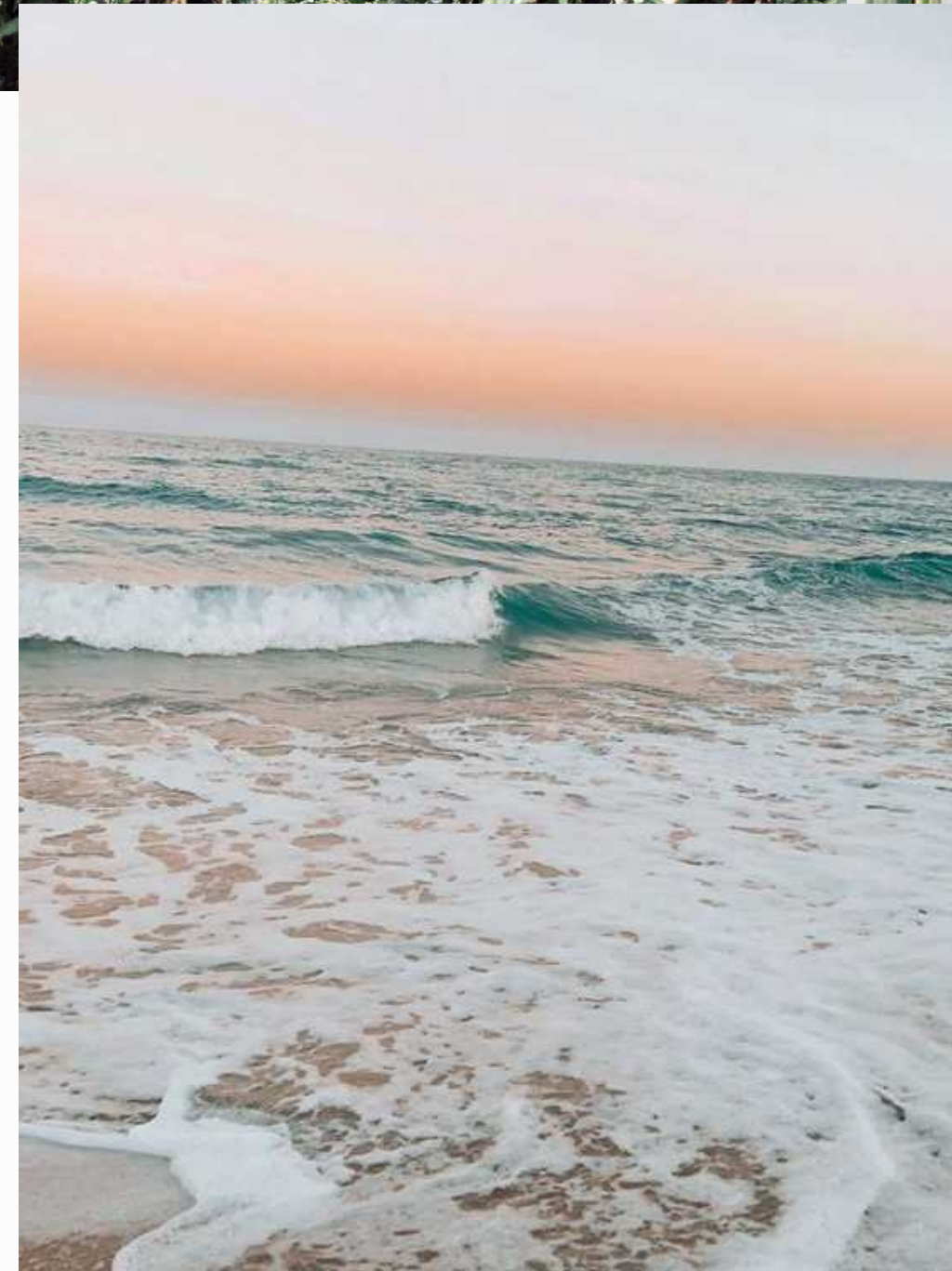
Shopping Service  
& Transfers

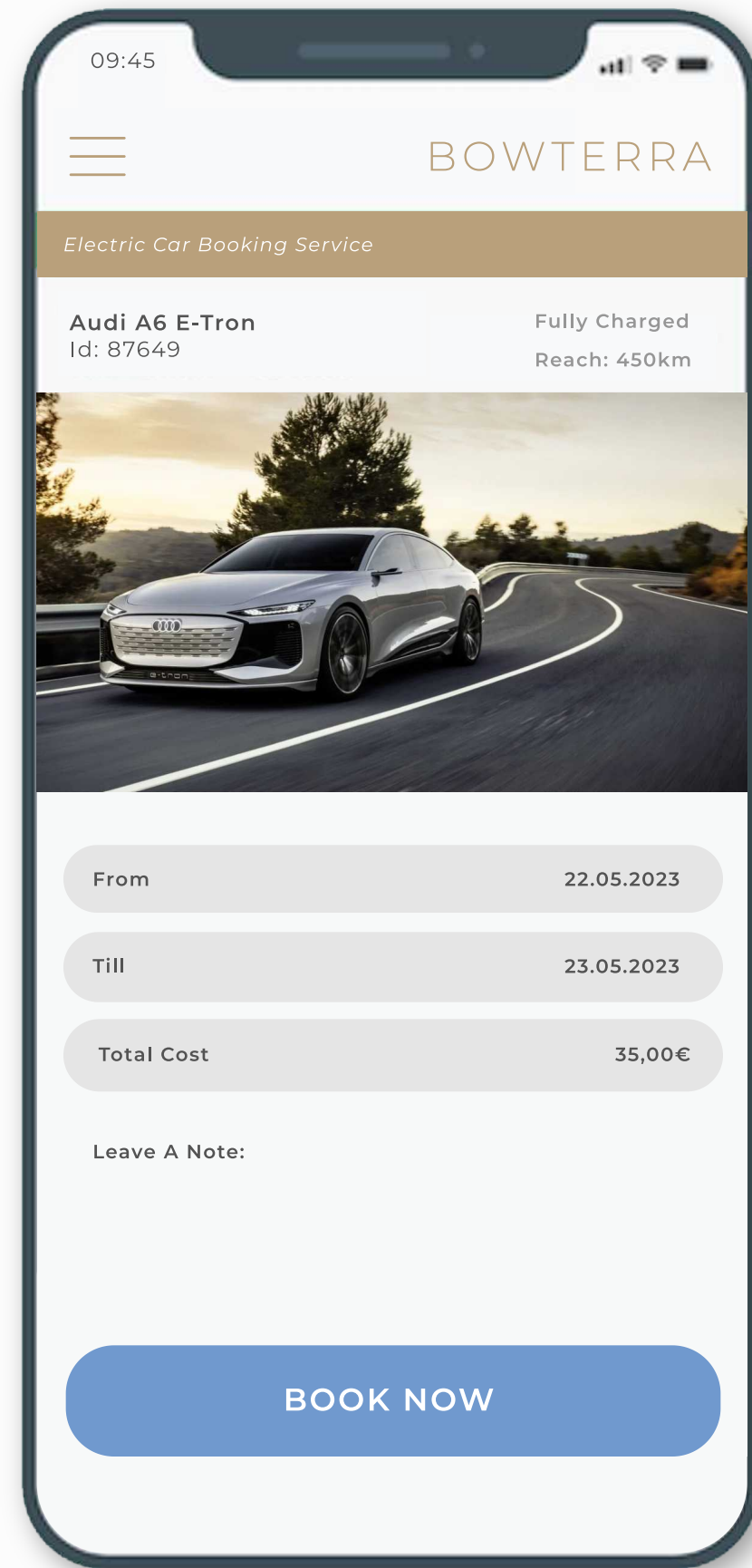
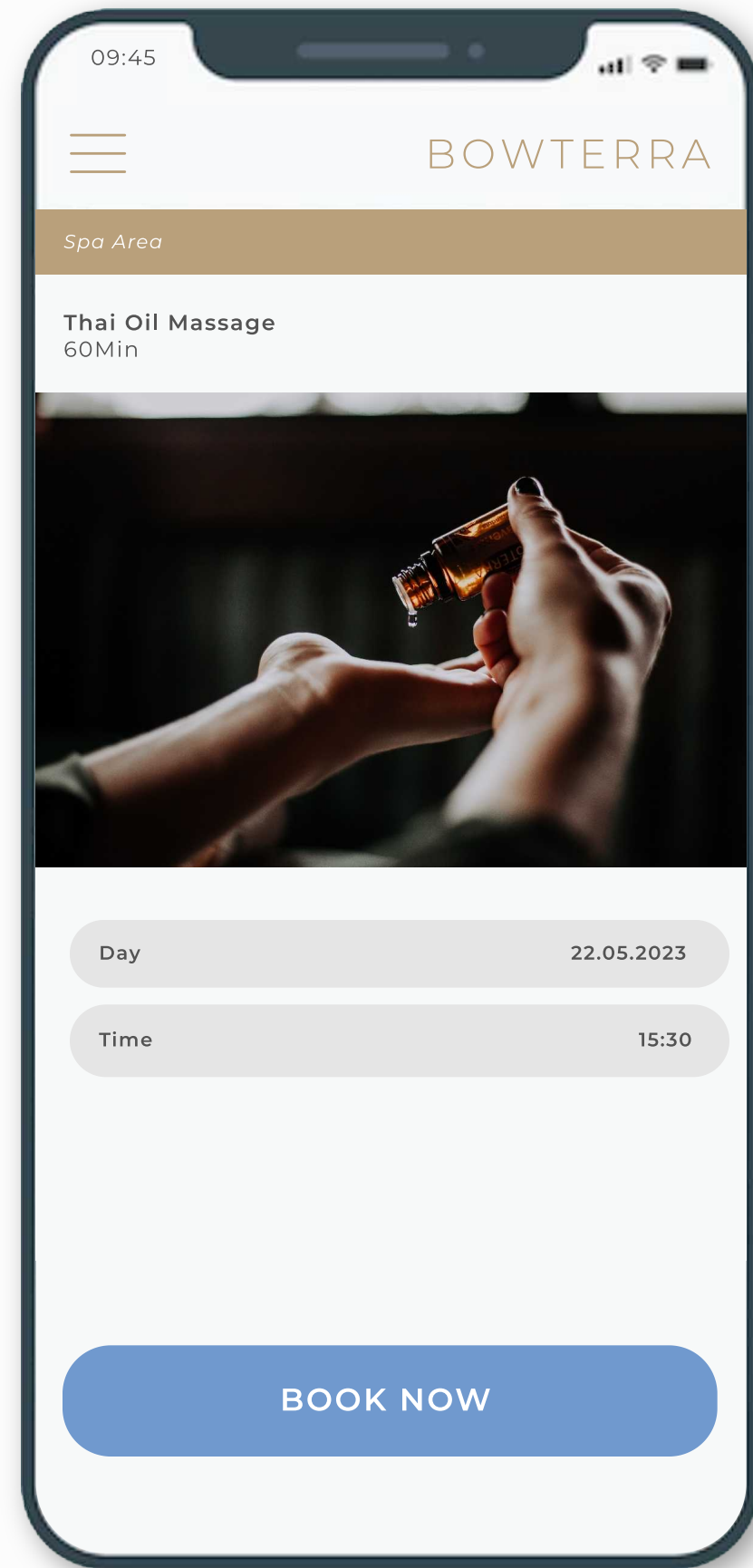
## SPIRITUALITY & CONSCIOUSNESS

Open up to the people around you and discover a new source of happiness.

Our philosophy is grounded in the belief that all senses should be stimulated through a combination of textures, aromas, music, and art.

BOWTERRA; a haven that allows you to rediscover your rhythm and experience the pleasures of unrestricted freedom.





# INTERNAL BOWTERRA APPLICATION

The app will function as a service assistant where visitors & residence can manage their bookings and communicate with management.

*Accounting & Invoicing System*

*House Management*

*Service Booking Platform*

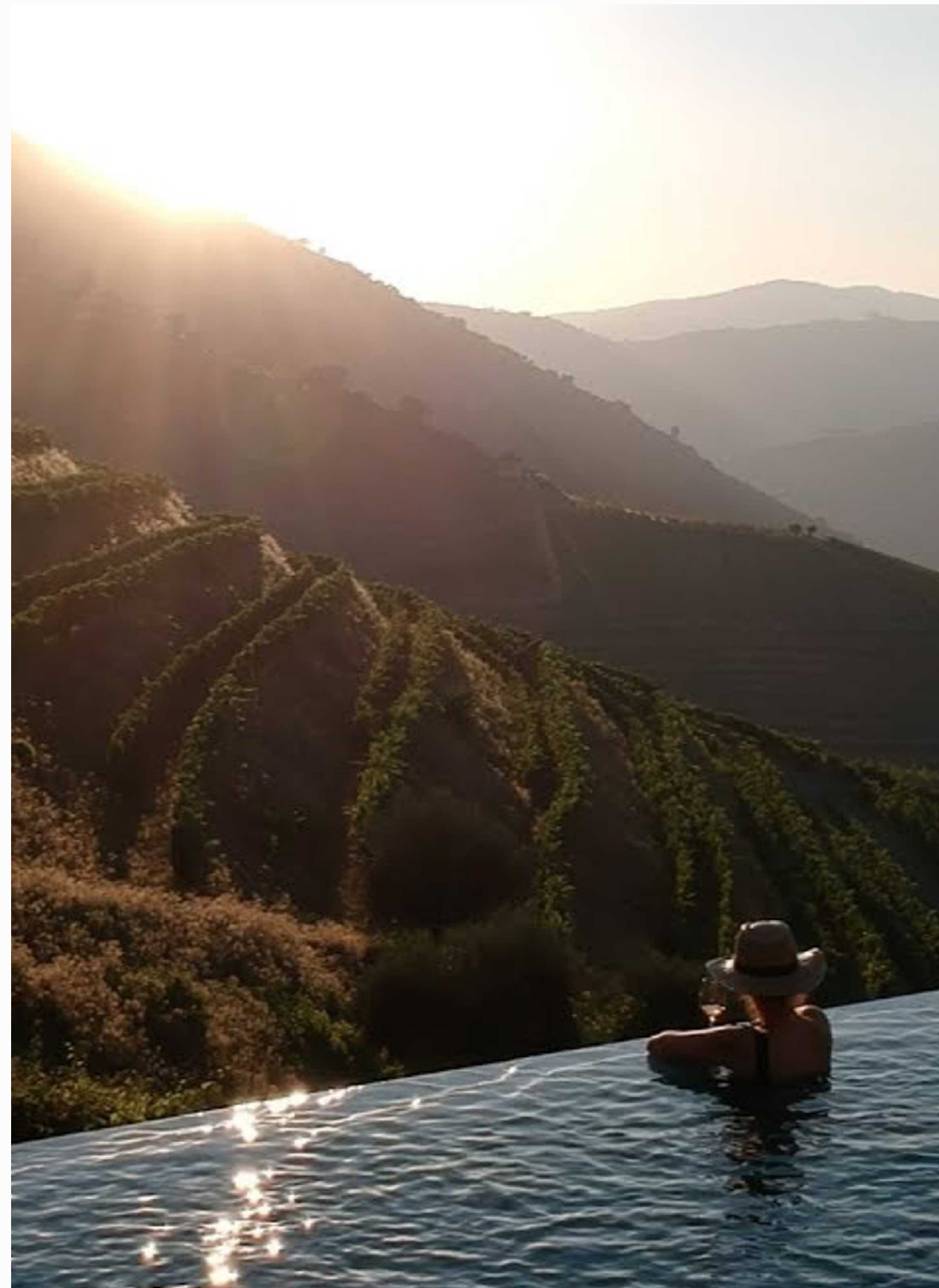
*Communication & Operating Company*

*Teasing & Updates About What's Happening In The Community*

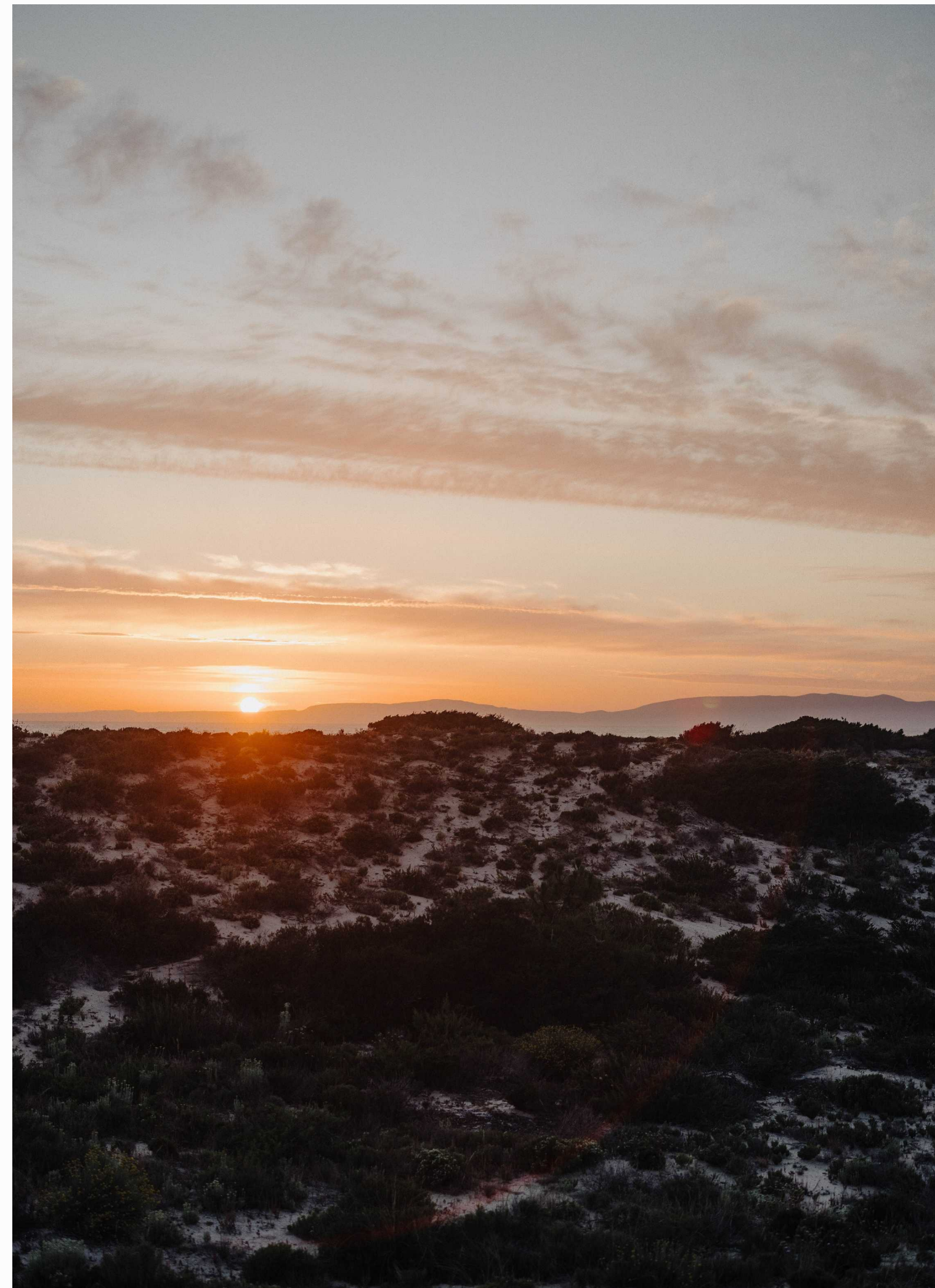
*Chat Option With Members To Connect And Book Together*

# BOWTERRA PORTUGAL

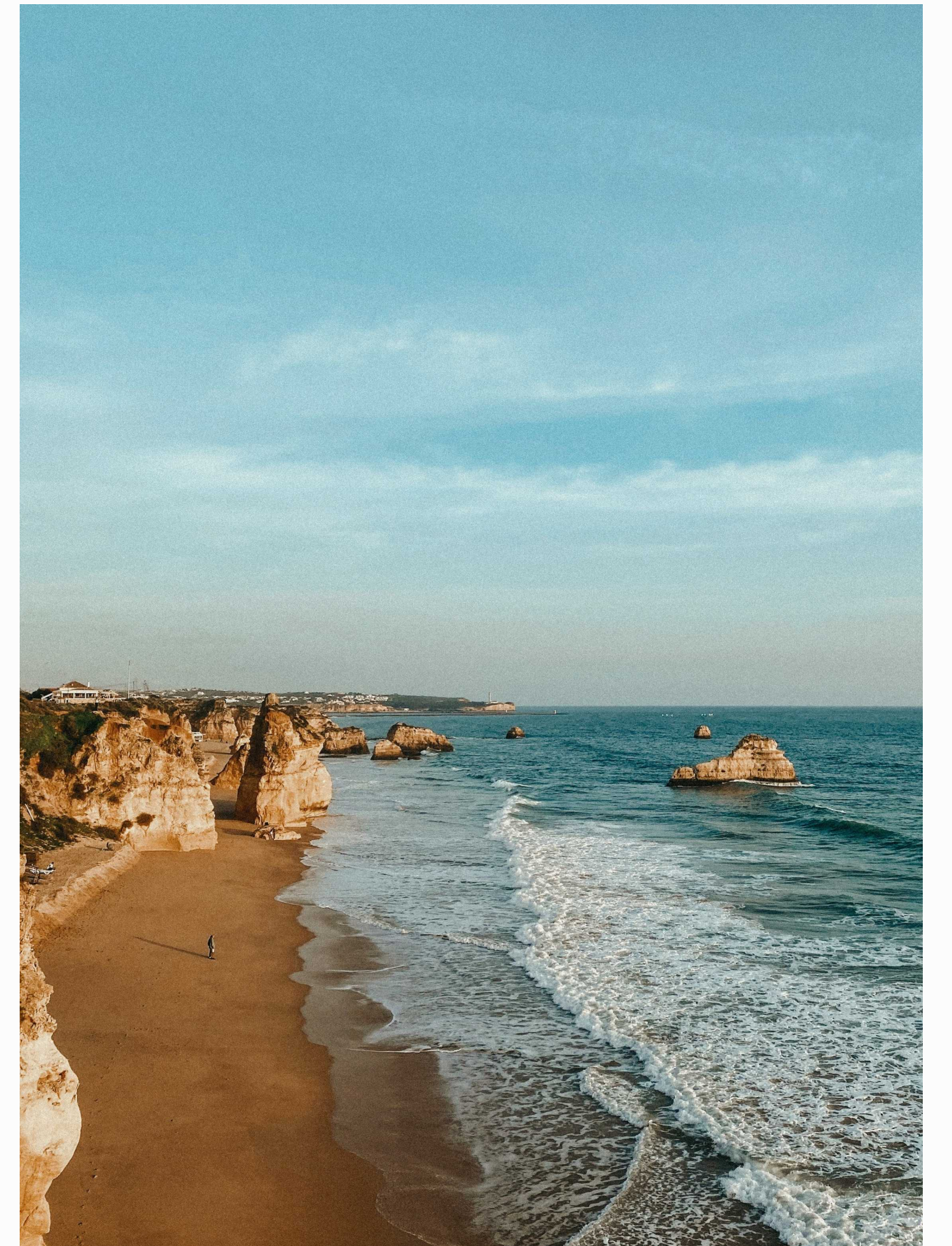
DOURO VALLEY



COMPORTA



ALGARVE







# EUROPE PROJECTS

ACCESS THE MAIN LGBTQ+ DESTINATIONS IN EUROPE.

## Started Projects:

- 1 BOWTERRA Resort - Alicante / Spain
- 2 BOWTERRA Hotel - Malta

## Country in our Focus is Portugal

- Douro
- Comporta
- Algarve

## Potential new Project Locations

Crete / Greece  
Sicily / Italy



BOWTERRA  
— Portugal —

BOWTERRA  
— Costa Blanca —

BOWTERRA  
— Malta —

# OUR MANAGING TEAM

A COMPLEMENTARY UNIT



**JOEL VOGL**

Managing Director  
& Co - Founder

---

Director & Partner  
W&P Engineering Int. AG

[www.wpeng.net](http://www.wpeng.net)



**CHRISTOPH WASER**

Head of Sustainability,  
Engineering & Co - Founder

---

CEO & Founder  
W&P Engineering AG

[www.wpeng.ch](http://www.wpeng.ch)



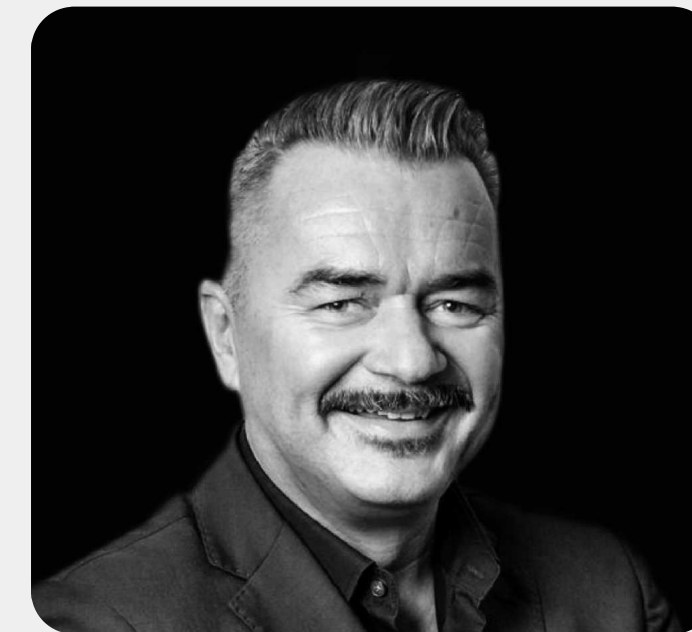
**FELIX PAUL SCHMID**

Business Development Strategist,  
Creative Director & Co - Founder

---

Founder & Director  
heed - Creative Agency

[www.heed.media](http://www.heed.media)



**THOMAS BÖMKES**

Business Development,  
LGBTQ+ Advisor & Co-Founder

---

Founder & Director  
Diversity Tourism GmbH

[www.diversitytourism.com](http://www.diversitytourism.com)



**TOM DEDEK**

Sales Director,  
LGBTQ+ Advisor & Co-Founder

---

Founder & Sales Director  
Diversity Tourism GmbH

[www.tomontour.de](http://www.tomontour.de)



# BOWTERRA

+41 79 545 90 29  
contact@bowterra.com  
www.bowterra.com