



WESTLAKE

Project: _____

Model: _____ Series #: _____

Dealer: _____ Quantity#: _____

Delivery address: _____ Date: _____

Top Mounted Series Reach in Solid door

Model#WK-48R(Refrigerator)

Features

- Precision ventilated refrigeration system keeps food at safe temperature
- Electronic control system make it easy to adjust temperature set point and defrost frequency
- Self closing door with 90 degree stay open feature,locks and keys included
- Preinstalled heavy duty casters with brakes
- Top installation board makes it easy to access condenser coil for cleaning and service
- Stainless steel exterior and interior, ensure longer life
- Top LED light,goes on when door open, goes off when door closed
- Anti-corrosion coated copper coil evaporator ensure 10 years life of westlake products
- 6 epoxy coated steel wire shelves, 90 lbs loading capacity each
- R290 hydro carbon refrigerant that has zero(0) ozone depletion potential(ODP) & three(3) global warming potential(GWP)



WARRANTY:

- 2 Years Parts and Labor
- 6 Years compressor (Additional 4 years parts only)
- westlake is responsible for components failure. but is not responsible for improper operation failure and artificial damage.





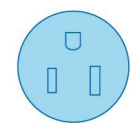
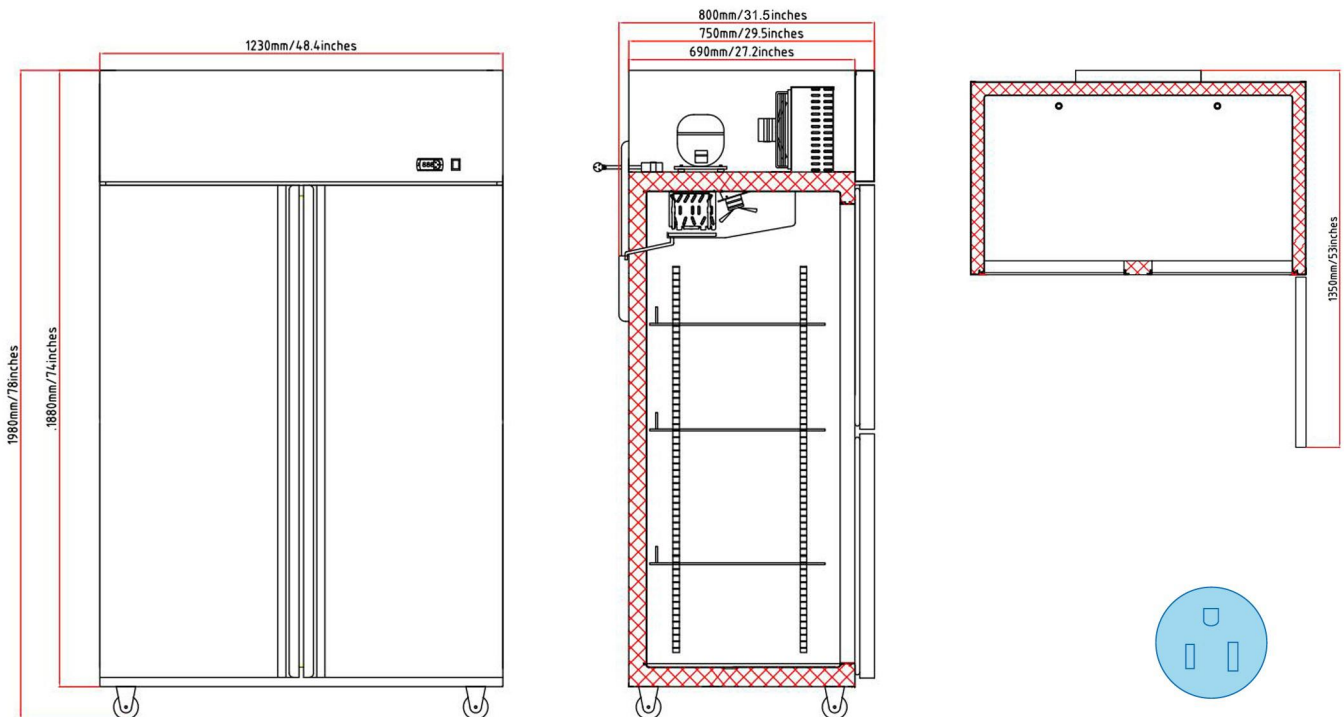
Top Mounted Series Reach in Solid door

Model# WK-48R(Refrigerator)

TECHNICAL DATA

| | |
|-------------------------|-------------------------|
| Model # | WK-48R |
| Temperature range | 33~41°F |
| Refrigerant | R290 |
| Max Ambient Temperature | 100°F |
| Defrosting | automatic every 4 hours |
| Horsepower | 1/3P |
| Exterior Dimension | 48.4*31.5*78 |
| Interior Dimension | 43.7*25*55 |
| Gross Weight | 373lbs |
| Net Weight | 293lbs |
| Packing Dimension | 50*32.3*79.1 |
| Voltage/Phase/Hz | 115V/1/60Hz |
| Amps | 3 |
| Plug Type | NEMA 5-15P |
| Electrical Cord Length | 70.8 |

PLAN VIEW



NEMA 5-15P