

LITHIUM IRON PHOSPHATE BATTERY

ELECTRICAL SPECIFICATIONS

| | |
|-----------------------------|------------------|
| Nominal Voltage | 12.8 V |
| Nominal Capacity | 100 Ah |
| Capacity @ 25A | 240 min |
| Energy | 1280 Wh |
| Resistance | ≤30 mΩ @ 50% SOC |
| Efficiency | 99% |
| Self Discharge | <2% per Month |
| Maximum Modules in Parallel | 16 |
| Maximum Modules in Series | 4 |

DISCHARGE SPECIFICATIONS

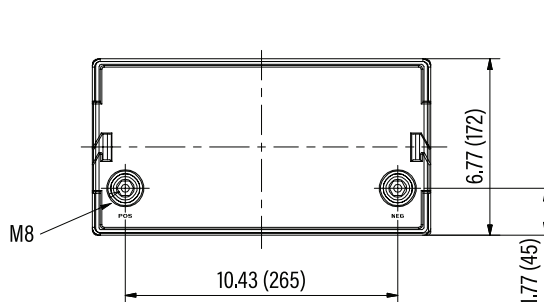
| | |
|--------------------------------------|---------------|
| Maximum Continuous Discharge Current | 100 A |
| Peak Discharge Current | 190 A (0.7 s) |
| BMS Discharge Current Cut-Off | 110 A (10s) |
| Recommended Low Voltage Disconnect | 10.5 V |
| BMS Discharge Voltage Cut-Off | 10 V (2s) |
| Reconnect Voltage | 12 V |
| Short Circuit Protection | 780A @ 400μs |

TEMPERATURE SPECIFICATIONS

| | |
|------------------------------|-----------------------------|
| Discharge Temperature | 14 to 167 °F (-10 to 75 °C) |
| Charge Temperature* | 29 to 149 °F (-2 to 65 °C) |
| Storage Temperature | 23 to 95 °F (-5 to 35 °C) |
| BMS High Temperature Cut-Off | 167 °F (75 °C) |
| Reconnect Temperature | 158 °F (70 °C) |

*Refer to charge currents below 32°F (0°C)

DIMENSIONAL SPECIFICATIONS



MECHANICAL SPECIFICATIONS

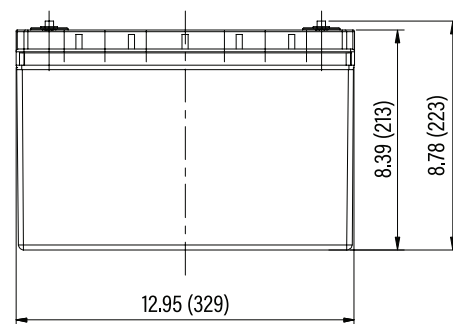
| | |
|------------------------|---------------------------------|
| Dimensions (L x W x H) | 13 x 6.8 x 8.8" |
| | 329 x 172 x 223 mm |
| Weight | ~25 lbs (12 kg) |
| Terminal Type | M8 |
| Terminal Torque | 80 - 100 in-lbs (9 - 11 N-m) |
| Case Material | ABS |
| Enclosure Protection | IP54 |
| Cell Type - Chemistry | Prismatic - LiFePO ₄ |

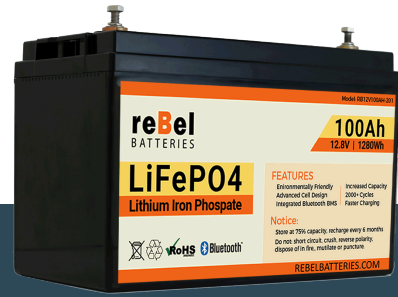
CHARGE SPECIFICATIONS

| | |
|----------------------------|-----------------|
| Recommended Charge Current | 5 A - 75 A |
| Maximum Charge Current | 100 A |
| Bulk / Absorb Voltage | 14.2 V - 14.6 V |
| Float Voltage | 13.5 V |

COMPLIANCE SPECIFICATIONS

| | |
|-------------------------|---|
| Certifications | CE (battery) UN38.3 (battery) UL1642 & IEC62133 (cells) |
| Shipping Classification | UN 3480, CLASS 9 |





PERFORMANCE CHARACTERISTICS

