

## Milling cutter BTF 200



- PRO BENEFITS**
- **Safe through electronics** with soft start and lockable switch with restart protection
  - **Simple assembly** and removal of the blades
  - **Toolless adjustment** of the safety guard and toolless depth adjustment
  - **Dust-free milling** thanks to an optimal suction design
  - **Spindle locking** for simple tool changing and a quick clamping adapter

### Milling cutter with **corner attachment** for the dismantling of windows and doors

- Clean cutting of the old frame with almost no dust and dirt
- Different diamond blades can be used in concrete, masonry and wood
- Corner attachment for perfect corner cuts
- Simple handling thanks to the ergonomic spade handle and adjustable additional handle at the front
- Disc is retracted by spring force once finished
- Precise depth adjustment with a scale up to 70 mm
- Disc mount Ø 29 mm
- Dust extraction Ø 38 mm

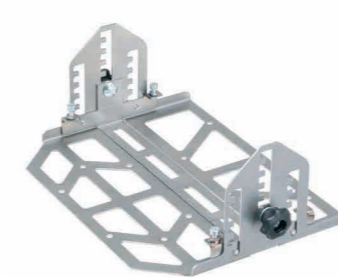


BTF 200	ID No.
BTF 200 Milling Cutter with 1 x 185 mm diamond disc in 280 L MetaBOX transport case and corner attachment	10244
BTF 200 corner attachment	10227
A 35 two-hole wrench	68247
SW6 DIN911 Hexagon socket wrench	32128
MetaBOX 280 L transport case system for BTF 200 (complete)	10386
185 mm diamond blade, BTF 200 Gold	10242
200 mm diamond blade, BTF 200 Laser Turbo	10423
200 mm diamond blade, BTF 200 All Cut	10494
200 carbide saw blade, number of teeth: 24, wood	10434
200 carbide saw blade, number of teeth: 12, wood	10412
BTF 200 rabbet stop	10417
BTF 200 height adjustment	10422

\* ID No. 10244 is delivered with Ø 185 mm as standard. Additional blades are optional.



Rabbet stop



Height adjustment



Corner attachment



Diamond blade



Transport case (MetaBOX 280 L)

POWER	SPEED	DISC Ø *	CUTTING WIDTH	CUTTING DEPTH	WEIGHT
1,700 W	6.500 Upm	180, 185, 200 mm	3 mm	70 mm	4.8 kg