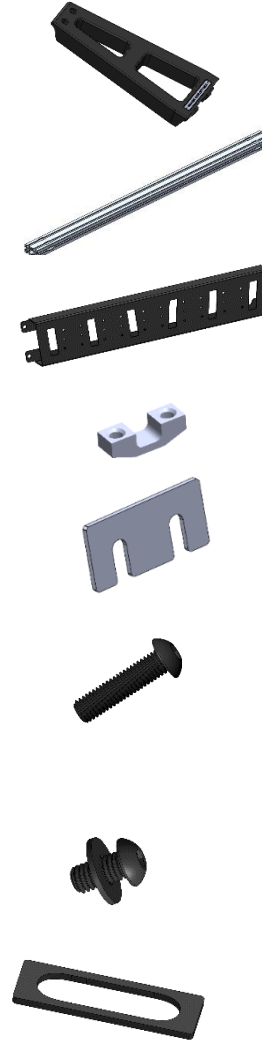


Rivian R1T SIERRA Rack Install Instructions

Begin by unpacking all components and making sure no parts are missing. If any parts are missing, please contact sales@range-industries.com and we will remedy the situation ASAP. See list of all parts below:

- 4X 6061-T6 Aluminum Rack Uprights
- 2X 6063-T6 Aluminum Crossbars
- 2X Aluminum Cargo Panels
- 4X Stainless Steel u-nuts
- 4X 6061-T6 aluminum shims
- 16X 5/16"-18 x 1" stainless steel bolts
- 8X 5/16"-18 x 5/8" stainless steel bolts and washers
- 4X Foam Gaskets for upright base



Install Notes:

- Use blue (medium) Loctite or equivalent thread locker on all bolts

Required Tools:

- 3/16" hex key or 3/16" hex bit with ratcheting wrench
- Torque wrench

Upright Install

Begin by inserting the foam backed stainless steel u-bolts into the anchor points on the bed rail.



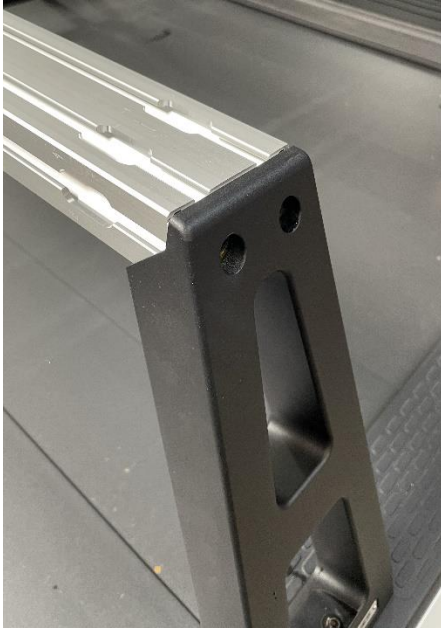
Next place the black upright over the anchor point (with silver logo plate facing outwards) and move around till it locates properly onto the anchor point. Make sure the black foam cosmetic gasket is installed on the underside of the upright before install. Use two of the supplied 5/16" -18 x 1" stainless steel bolts to mount upright to the anchor point. We recommend the use of blue Loctite on all hardware for this install. Snug the bolts down, but do not fully tighten at this point. Repeat this for the other 3 uprights.



Crossbar Install

Next place one of the supplied crossbars into the pockets on a pair of the uprights. Please note that the crossbar will be undersized. Slide 1 of the supplied shims between the crossbar and the upright on one

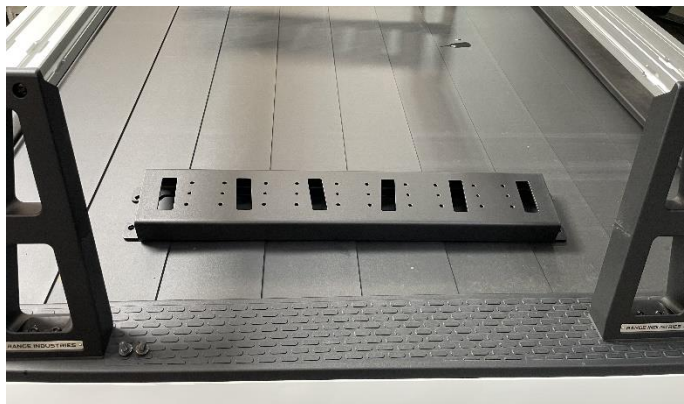
side. Insert 2x of the 5/16"-18 x 1" stainless steel bolts (use of blue Loctite recommended) through the upright and into the tapped holes in the end of the crossbar, snug the bolts.



Next go to the other side and insert shims as required to remove the gap between the crossbar and the upright. Insert 2x of the 5/16"-18 x 1" stainless steel bolts (use of blue Loctite recommended) through the upright and into the tapped holes in the end of the crossbar and snug bolts. Double check to make sure gaps are closed up. If gaps are still present add or remove shims to ensure proper fitment. Please note that bolts attaching the upright to the crossbar do not need to be fully removed in order to insert shims.

Cargo Panel Install

Now its time to attach the side cargo panels. Hold the panels in place and install the 4x 5/16"-18 x 5/8" long bolts. Remember to use blue Loctite. Note, if panel fit is too tight between the two uprights, loosen the bolts holding the uprights to the anchor points. Slide them apart slightly to make room for the panel.



Final Torque

Go back and torque all bolts to 12.5 ft-lbs (150 in-lbs). Make sure blue Loctite was used on all bolts.

Bolt Check

After driving with rack installed for 25 miles, re-check hardware to ensure none of the hardware has loosened.

Removal

Rack can be removed as an entire assembly by simply removing the 8x bolts holding it to the factory anchor points. Once bolts are removed, lift rack from bed rails and remove from vehicle. Due to the racks weight (approx. 55 lbs) and size, we recommend finding another person to help with this step. Rack can also be disassembled piece by piece by reversing order of assembly.