

Rivian R1T Kayak Crossbar Install Instructions

Begin by unpacking all components and making sure no parts are missing. If any parts are missing, please contact sales@range-industries.com and we will remedy the situation ASAP. See list of all parts below:

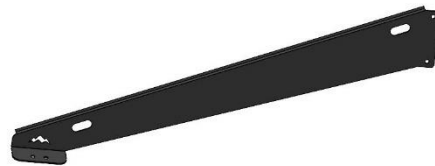
- 2X Upright Assemblies



- 1X 6063-T6 Aluminum Crossbar Assembly



- 2X Side Brace



- 8X 5/16"-18 x 1" stainless steel bolts



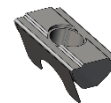
- 8X 5/16"-18 x 5/8" stainless steel bolts



- 4X 5/16"-18 x 1/2" stainless steel bolts



- 12X 5/16"-18 Spring Clip T-Nuts
4 of 12 preinstalled on uprights



- 2X Foam Gaskets for upright base



- 2X Bed Brace Mounts



Install Notes:

- Use blue (medium) Loctite or equivalent thread locker on all bolts

Required Tools:

- 3/16" hex key or 3/16" hex bit with ratcheting wrench
- Torque wrench

Upright Install

Insert the foam backed u-nut into the factory Rivian anchor point as shown below.



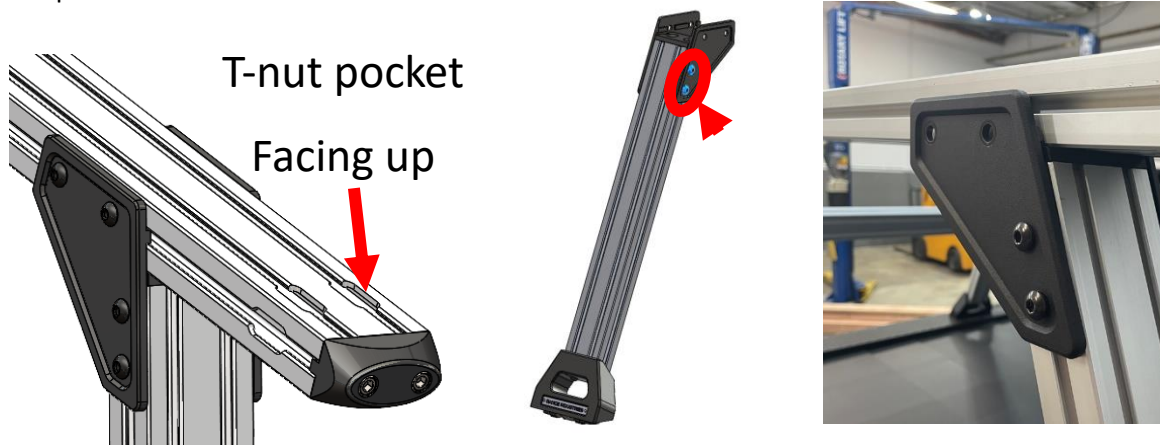
Install the black foam gasket onto the bottom of the upright assembly. Identify LH or RH upright assembly and place over the anchor point (with silver logo plate facing outwards) and move around until it locates properly onto the anchor point. Double check to make sure the black foam cosmetic gasket is installed on the underside of the upright before install, see below



Use two of the supplied 5/16"-18 x 1" stainless steel bolts to mount upright to the anchor point. We recommend the use of blue Loctite on all hardware for this install. Snug the bolts down until the upright is standing up fully. Push the base of the upright forward toward the opposite side of the bed while tightening. This makes the upright register off the vertical surface of the anchor point and keeps the upright square to the bed. Repeat this for the other upright.

Crossbar Install

Crossbar can be installed in two possible orientations (t-nut install pockets facing up or down). Think about your intended use for the rack and if one orientation makes more sense for you. Begin by loosening the 4x bolts on each upright assembly holding the corner plates in place by roughly 2 turns. This will allow the plates to lean away from the extrusion enough to drop the crossbars in from the top. Note, be careful not to loosen the bolt so much that it completely unthreads from the T-nut. Once the crossbar is resting on the upright assemblies, pull the loosened corner plates up and snap the bosses on the place into the channels on the crossbars.



Measure the amount of crossbar sticking out on each side of the upright assemblies. Try to move the crossbar to get these measurements as close as possible to center the crossbar. Once centered, install the drop in T-nuts into the crossbar channels. Slide nuts into position until they are aligned with the holes on the corner plates. Apply blue loctite to the supplied 5/16"-18 x 5/8" bolts and thread into the t-nuts. Snug bolts.



Side Brace Install

Insert the foam backed u-nut into the factory Rivian anchor point. Set the bed brace mount on top and align with the nut as shown below.



Identify either LH or RH side brace and set into position, the mounting holes to the crossbar upright should align to the inside of the rail toward the center of the bed. See installed rack photos for reference. Use the supplied 5/16-18 X 1" bolts to loosely secure brace the bed mount. Align the drop in t-nuts with the mounting holes on the brace. Loosely secure with the 5/16-18 x 1/2" bolts. Make sure the brace is sitting flat on the bed mount and against the upright, snug all four bolts.



LH Side Shown



Final Torque

Go back and torque all bolts to 12.5 ft-lbs (150 in-lbs). Make sure blue Loctite was used on all bolts. It's important to wait till the end to fully tighten bolts. This way there wont be any preload or stress built into the joints of the rack. This allows for the rack to keep its exact shape when removed from the vehicle and makes re-installation a breeze.

Bolt Check

After driving with rack installed for 25 miles, re-check hardware to ensure none of the hardware has loosened.

Removal

Rack can be removed as an entire assembly by simply removing the 8x bolts holding it to the factory anchor points. Once bolts are removed, lift rack from bed rails and remove from vehicle. Alternatively, you can remove the side braces only and lift the crossbar mount off separately. Rack can also be disassembled piece by piece by reversing order of assembly.