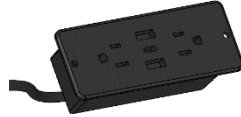


Rivian R1T Gear Tunnel Power outlet Install Instructions

Begin by unpacking all components and making sure no parts are missing. If any parts are missing, please contact sales@range-industries.com and we will remedy the situation ASAP. See list of all parts below:

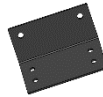
- 1X Electrical outlet assembly



- 1X Energy chain mounting tray



- 1X Energy chain mounting bracket



- 1X Energy Chain



- 1X P-Clip



- 3X 1/4"-20 X 1/2" Bolts and nuts
- 2X M3 X 12mm Bolts and nuts
- 2X M4 X 12mm Bolts and nuts
- 2X #10-24 X .5" Bolts and nuts

Required Tools:

- 5/32" hex key or 5/32" hex bit with ratcheting wrench
- 3/8" and 7/16" wrench
- 2mm and 2.5 mm hex keys
- Small Adjustable Wrench

Assembly Instructions

The best time to install the outlet and energy chain is after the slide has been fully assembled but before it has been installed into your Rivian R1T. These instructions will pick up from that point. These assembly procedures are showing how installation will look for a slide that exits the passenger side of the truck. If you have your slide set up to exit the driver side of the truck, everything shown below will be mirrored for you.

Begin by lifting the yellow release tabs on the end of the gear tunnel slide and pull the slide out until you have access to the first mounting hole on the drawer slide.



Use one of the supplied $\frac{1}{4}$ "-20 bolts and locknuts to mount the energy chain tray to the back of the gear tunnel slide. Make sure the bolt head is on the interior side of the drawer slide and the nut is on the outside.



Next collapse the slide closed until the circular access cutout on the inside of the drawer slide aligns with the second mounting hole for the energy chain slide. When they are aligned install a second $\frac{1}{4}$ "-20 bolt and locknut. Again making sure the bolt head is on the interior side of the drawer slide for clearance.

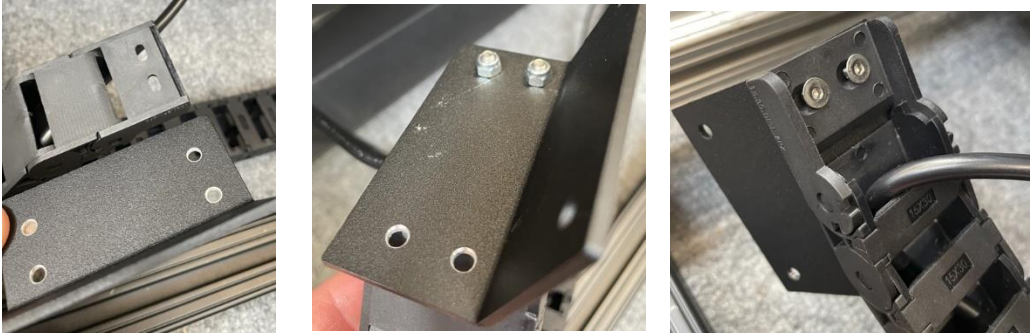
Next, feed the extension cord through the hole in the back panel of the gear tunnel slide and install the outlet. Secure using the 2x 3mm bolts and nuts.



Now we need to open up the locking tabs on the energy chain so we can run the electrical cable through the chain. Using a small flathead screwdriver or the end of a small allen key, carefully find the release tab on each section of the energy chain, and pry them up one by one. Once all are open, run the cable through the chain and close all tabs to secure the cable.



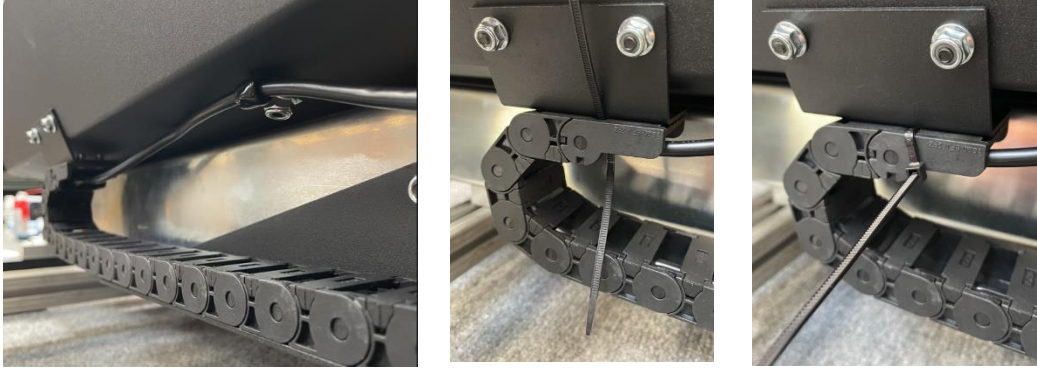
Now take the side of the energy chain which is closest to the outlet box, and install the small aluminum mounting bracket using 2x of the supplied M4 bolts and nuts.



After the mounting bracket is attached to the energy chain, mount the small bracket to the back panel of the gear tunnel slide using the supplied #10 bolts and nuts. Now fasten the opposite end of the energy chain to the end of the tray supporting the chain using the provided M4 bolts and nuts.



In order to keep the cable from drooping, use the supplied P-clamp and ¼"-20 bolt and nut to secure the cable to the underside of the rear slide panel. Next remove the slack from between the p-clamp and the start of the energy chain, and slide a zip tie through the access hole to secure the cable to the energy chain. Tighten the zip tie to hold the cable in place, and trim the excess.



This completes assembly. Cycle the gear tunnel slide a few times to ensure the energy chain operates correctly. Install the gear tunnel slide into your Rivian R1T as outlined in the Gear Tunnel Slide Assembly Instructions. After installed, be sure to plug in the power to the out in the gear tunnel.