



Certificate of Analysis

Powered by Confident Cannabis

NuLeev Holdings LLC

6545 Flying Cloud Dr. Ste #101
Eden Prairie, MN 55344

Sample: 2109DBL0309.9642

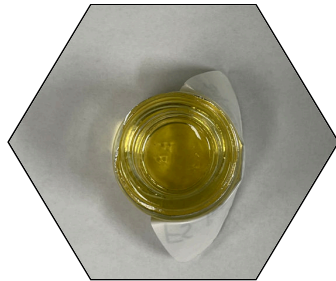
METRC Sample:
Lot #: 212809

Strain: N/A

Ordered: 09/30/2021; Sampled: 09/30/2021; Completed: 10/04/2021

FS Pet Bacon Tincture - 600mg

Ingestible, Tincture



Cannabinoids

- CBC
- CBCa
- CBD
- CBDa
- CBDV
- CBDVa
- CBG
- CBGa
- CBL
- CBN
- Δ8-THC
- Δ9-THC
- THCa
- THCV
- THCVa

Cannabinoids	
<LOQ	608.674 mg/unit
Δ9-THC + Δ8-THC	CBD
749.192 mg/unit	NT
Total Cannabinoids	Moisture

1 Unit = FS Pet Bacon Tincture - 600mg, 28.35g

Cannabinoid Profile

Analyzed by 300.18 UHPLC/PDA

Cannabinoid	Mass mg/unit	Mass mg/g	LOQ mg/unit
CBC	<LOQ	<LOQ	1.624
CBCa	<LOQ	<LOQ	1.624
CBD	608.674	21.470	1.624
CBDa	<LOQ	<LOQ	1.624
CBDV	7.006	0.247	1.624
CBDVa	<LOQ	<LOQ	1.624
CBG	133.512	4.709	1.624
CBGa	<LOQ	<LOQ	1.624
CBL	<LOQ	<LOQ	1.624
CBN	<LOQ	<LOQ	1.624
Δ8-THC	<LOQ	<LOQ	1.624
Δ9-THC	<LOQ	<LOQ	1.624
THCa	<LOQ	<LOQ	1.624
THCV	<LOQ	<LOQ	1.624
THCVa	<LOQ	<LOQ	1.624
Total THC	ND	ND	
Total CBD	608.674	21.470	
Total	749.192	26.427	



Benjamin G.M. Chew
Benjamin G.M. Chew, Ph.D.
Laboratory Director

Glen Marquez
Glen Marquez
Quality Control



4439 Polaris Ave
Las Vegas, NV
(702) 728-5180
www.dblabslv.com

This report is considered highly confidential and the sole property of the customer. DB Labs will not discuss any part of this study with personnel other than those authorized by the client. The results described in this report only apply to the samples analyzed. The reported result is based on a sample weight with the applicable moisture content for that sample. LOQ = Limit of Quantitation. Pesticide LOQ = Instrument Limit of Quantitation. NA = Not Analyzed. ND = Not Detected. NR = Not Reported. NT = Not Tested. PGR = Plant Growth Regulator. Unless otherwise stated all quality control samples performed within specifications established by the Laboratory. This product has been tested by DB Labs, LLC (MME# 61887736101164525768) using valid testing methodologies and a quality system as required by Nevada state law. Edibles are picked up prior to final packaging unless otherwise stated. Values reported relate only to the product tested. The uncertainty of measurement associated with the measurement result reported in this certificate is available from the organization upon request. DB Labs makes no claims as to the efficacy, safety or other risks associated with any detected or non-detected levels of any compounds reported herein. This Certificate shall not be reproduced except in full, without the written approval of DB Labs.