



# Certificate of Analysis

Powered by Confident Cannabis

NuLeev Holdings LLC

6545 Flying Cloud Dr. Ste #101  
Eden Prairie, MN 55344

Sample: 2109DBL0309.9640

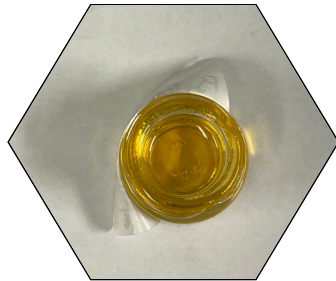
METRC Sample:  
Lot #: 212809

Strain: N/A

Ordered: 09/30/2021; Sampled: 09/30/2021; Completed: 10/04/2021

## FS Pet Salmon Tincture - 300mg

Ingestible, Tincture



### Cannabinoids

CBC  
CBCa  
CBD  
CBDa  
CBDV  
CBDVa  
CBG  
CBGa  
CBL  
CBN  
Δ8-THC  
Δ9-THC  
THCa  
THCV  
THCVa

### Cannabinoid Profile

Analyzed by 300.18 UHPLC/PDA

Cannabinoid	Mass mg/unit	Mass mg/g	LOQ mg/unit
CBC	<LOQ	<LOQ	1.526
CBCa	<LOQ	<LOQ	1.526
CBD	305.855	10.789	1.526
CBDa	<LOQ	<LOQ	1.526
CBDV	3.646	0.129	1.526
CBDVa	<LOQ	<LOQ	1.526
CBG	65.682	2.317	1.526
CBGa	<LOQ	<LOQ	1.526
CBL	<LOQ	<LOQ	1.526
CBN	<LOQ	<LOQ	1.526
Δ8-THC	<LOQ	<LOQ	1.526
Δ9-THC	<LOQ	<LOQ	1.526
THCa	<LOQ	<LOQ	1.526
THCV	<LOQ	<LOQ	1.526
THCVa	<LOQ	<LOQ	1.526
<b>Total THC</b>	<b>ND</b>	<b>ND</b>	
<b>Total CBD</b>	<b>305.855</b>	<b>10.789</b>	
<b>Total</b>	<b>375.183</b>	<b>13.234</b>	

### Cannabinoids

<LOQ

305.855  
mg/unit

Δ9-THC + Δ8-THC

CBD

375.183  
mg/unit

NT

Total Cannabinoids

Moisture

1 Unit = FS Pet Salmon Tincture - 300mg, 28.35g



*Benjamin G.M. Chew, Ph.D.*  
Benjamin G.M. Chew, Ph.D.  
Laboratory Director

*Glen Marquez*  
Glen Marquez  
Quality Control



4439 Polaris Ave  
Las Vegas, NV  
(702) 728-5180  
www.dblabslv.com

This report is considered highly confidential and the sole property of the customer. DB Labs will not discuss any part of this study with personnel other than those authorized by the client. The results described in this report only apply to the samples analyzed. The reported result is based on a sample weight with the applicable moisture content for that sample. LOQ = Limit of Quantitation. Pesticide LOQ = Instrument Limit of Quantitation. NA = Not Analyzed. ND = Not Detected. NR = Not Reported. NT = Not Tested. PGR = Plant Growth Regulator. Unless otherwise stated all quality control samples performed within specifications established by the Laboratory. This product has been tested by DB Labs, LLC (MME# 61887736101164525768) using valid testing methodologies and a quality system as required by Nevada state law. Edibles are picked up prior to final packaging unless otherwise stated. Values reported relate only to the product tested. The uncertainty of measurement associated with the measurement result reported in this certificate is available from the organization upon request. DB Labs makes no claims as to the efficacy, safety or other risks associated with any detected or non-detected levels of any compounds reported herein. This Certificate shall not be reproduced except in full, without the written approval of DB Labs.