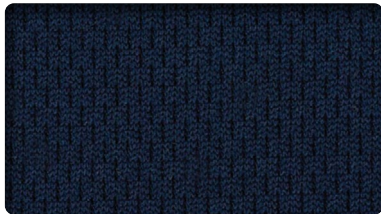


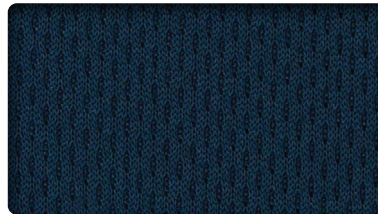
# Breathe



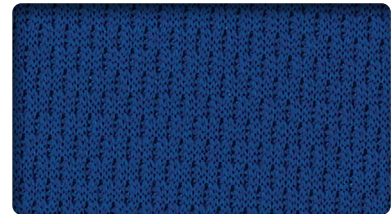
Royal Blue (BERO)



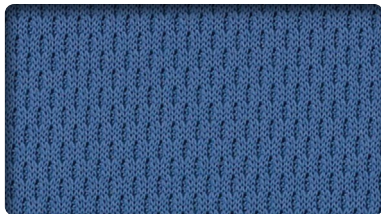
Navy (BENA)



Steel Blue (BEST)



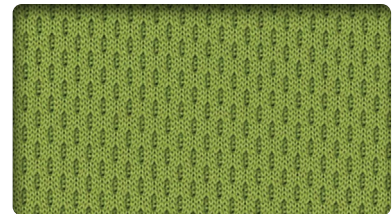
Sky Blue (BESK)



Baby Blue (BEBA)



Fern Green (BEFE)



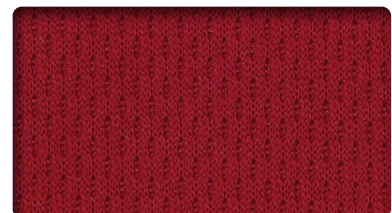
Lime Green (BELI)



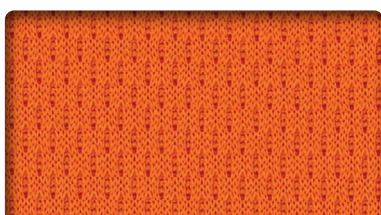
Plum (BEPL)



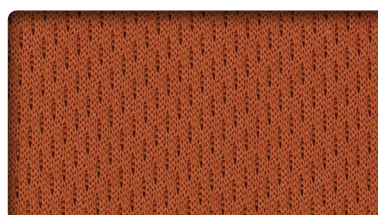
Ruby Red (BERU)



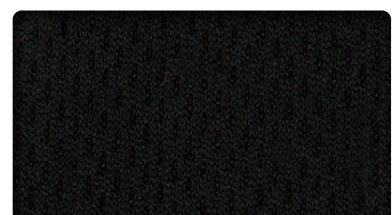
Tomato Red (BETO)



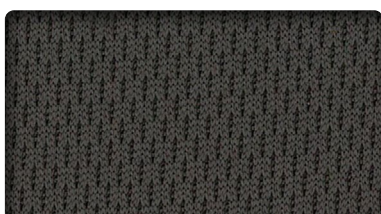
Bright Orange (BEBR)



Burnt Orange (BEBU)



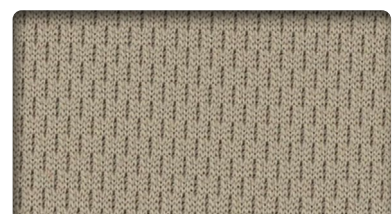
Black (BEBL)



Slate Grey (BESL)



Alloy Grey (BEAL)



Camel (BECS)

# Breathe

*Breathe is an elegant range of fabric for seating in exciting, contemporary colourways. Breathe is a hardwearing choice and meets industry specifications for fire retardancy.*

## Technical Specifications

<b>Composition:</b>	100% Polyester
<b>Weight:</b>	460g/m <sup>2</sup>
<b>Roll Width:</b>	150cm
<b>Abrasion Rating:</b>	> 40,000 rubs (Martindale)
<b>Flammability:</b>	CA-117 California TB 117 Section E
<b>Colour Matching:</b>	Batch to batch variations in colour may occur within commercial tolerances.

## Maintenance & Cleaning

We recommend professional dry cleaning for Breathe fabric.

- Protect from direct sunlight.
- Vacuum regularly using low suction.
- Wipe clean with a damp cloth using upholstery shampoo.
- Don't scrub or use stiff brush.
- Don't use dishwashing or laundry detergents.
- Dry in the shade, away from direct heat.
- Allow to dry thoroughly before reusing.

## Environmental

As a caring, corporate citizen, we support the responsible stewardship of the earth, its inhabitants and its resources.

Our fabrics are designed and made to last, and in their manufacture, use and disposal, embody the environmental principles of Reduce, Reuse & Recycle.