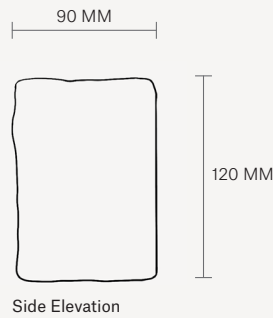
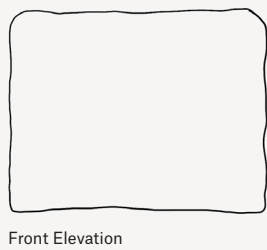
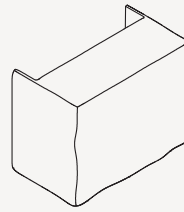
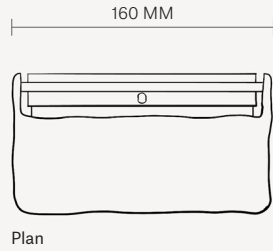




SCAPE
WALL LIGHT
Specification Sheet

SCAPE
WALL LIGHT
 SPECIFICATION SHEET



About Scape

Scape is evocative of the natural world and reminiscent of the landscapes we hold dear. Its undulating texture feels like a vast land mass viewed from high above, with each detail crafted to capture the emotional essence of time and the gradual evolution of terrain through the forces of nature. As light passes over the surface, the hand-sculpted details come to life, reflecting and enhancing the surrounding environment with a soft, warm glow.

Care Instructions

Over time, the metal surface may diminish its original luster. To retain the original finish, use metal polish with a soft, dry cloth. Please refrain from using any polish on the darkened brass finish, as this may result in the removal of the patina. Do not use any abrasive substance on the product. Please be wary of the weight. Handle with care.

To know more, refer Installation Manual.

Technical Details

Dimensions
 W160 H120 D90 MM
 W6.3 H4.7 D3.5 IN

Weight
 1 kg - Aluminium
 2 kg - Brass
 2 kg - Darkened Brass

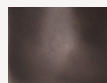
Material
 Aluminium



Brass



Darkened brass



Hardware
 W148 H57 D22 MM
 W5.8 H2.2 D0.9 IN
 SS finish

Light source
 IND/ UK/ EU
 G9 LED bulb (Incl.)
 2.6W, 220-240V

US/ JPN
 G9 LED bulb (Not Incl.)
 Suggested 2W-5W
 110-120V

Lumen
 320lm

Kelvin Rating
 2700K

Dimmable
 No

Cord
 Hardwire

Classification
 IP20

stem.

+ (91)-87002 87703

info@stemdesign.co

www.stemdesign.co

B-31, 2nd Floor, Sector 4, Noida 201301

© Stem Design 2023