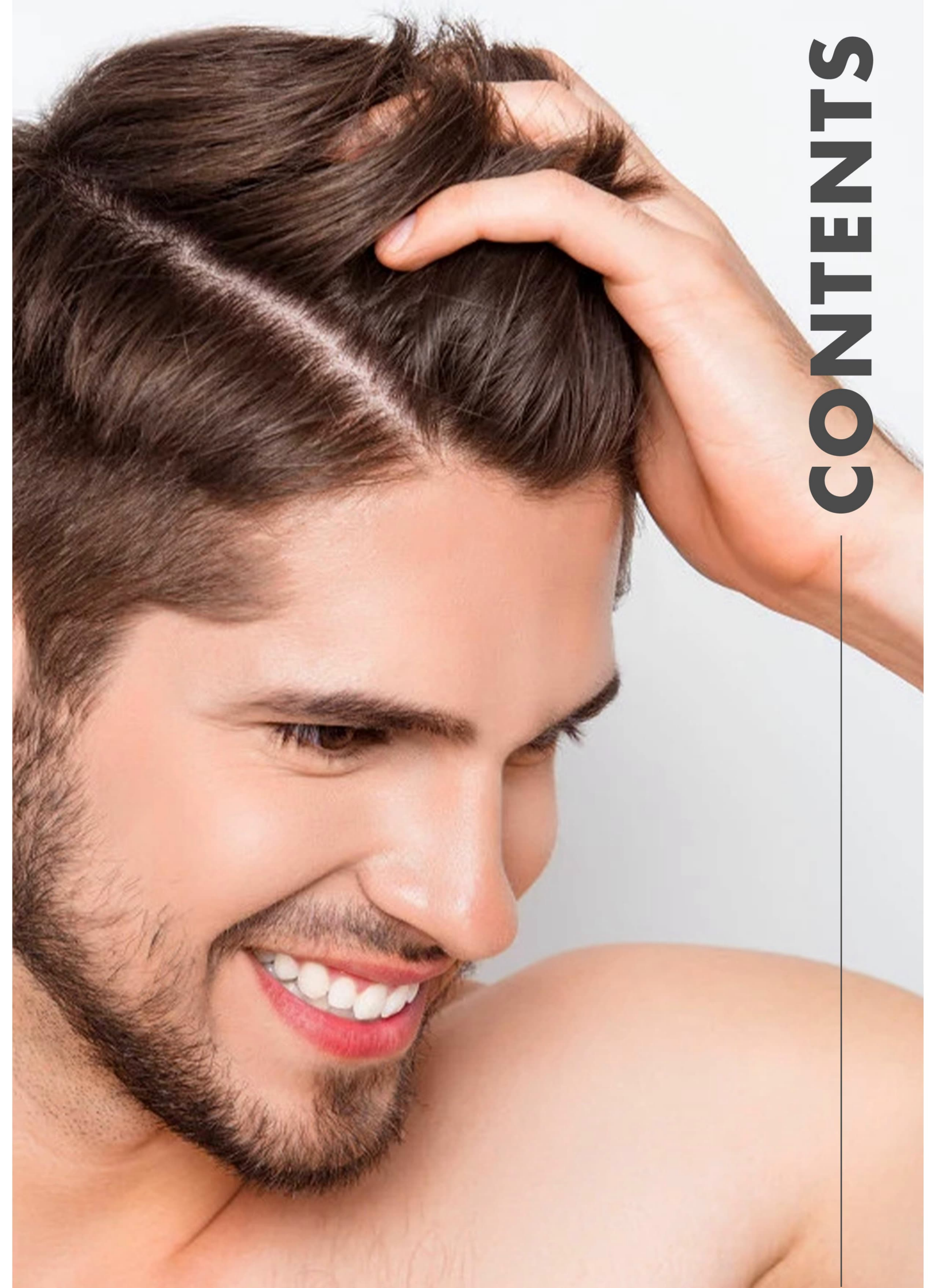


PROFESSIONAL NON-SURGICAL HAIR REPLACEMENT



REHAIR

BE THE BEST OF YOURSELF



CONTENTS

05

INTRODUCTION

About us	P.05
Men's hair systems	P.06

07

LACE

1 ALL LACE	P.07
2 OCTAGON	P.08
3 AUSTRALIA	P.09
4 Q6	P.10
5 HOLLYWOOD	P.11



12

SKIN

6 UTS	P.12
7 TSII	P.13
8 TSV	P.14



15

MONO

9 SPF	P.15
10 VERSALITE	P.16
11 VERSALITE DIAMOND	P.17
15 ELASTIK	P.18



19

OTHERS

12 I-LACE	P.19
16 BIO	P.20
17 FPA	P.21
18 OSCAR	P.22
19 D7-5	P.23



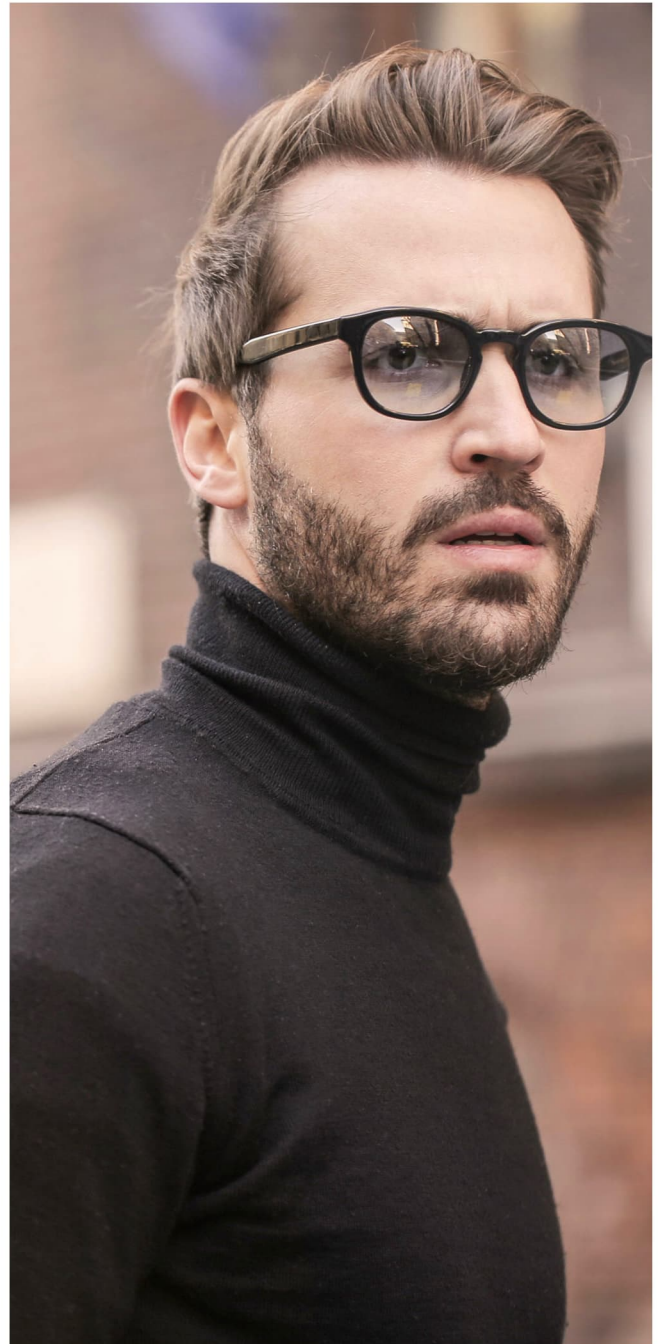
COLOR CHART	P.24
-------------	------

ABOUT US

ReHair System is a leader in hair loss help, providing various solutions and services for those who are impacted by hair loss. We've been serving the hair loss community for over 10 years.

We are a factory direct supplier that provides a full range of premium human hair replacement systems to hair systems wearers and barber/salon shop. We are passionate about providing the world with beautiful hairpieces.

We are committed to changing people's lives through our high-quality hair systems, which come at an affordable price point for all budgets and lifestyles! We at ReHair System strive toward this goal through our factories located in Qingdao China where we manufacture all types of real human hair hair replacement products.





MEN`S HAIR SYSTEMS

our top -of-the-line, highly affordable hair systems that are carefully hand-crafted with 100% real human hair.

LACE



1 ALL LACE



Base design

Swiss lace all over with stitching lines

Hair type

100 %Indian Human Hair

Base size

8"*6",9"*7",10"*7",10"*8"

Hair length

6"

Density

Medium heavy

Wave

Slight wave 32mm

Available color

#NC,#1B,#1C,#1,#2,#3,#4,#5,#6,#7,#4ASH,#7ASH,#17,#20,
#22R,#613,#1B10,#1B20,#1B30,#1B40,#1B50,#1B65,#1B80,
#210,#220,#240,#310,#320,#340,#350,#380,#410,#420,
#510,#520,#540,#550,#565,#580,#610,#620,#640,#740

2 OCTAGON



Base design	French lace with sides and back poly 1 inch
Hair type	100% Indian Human Hair
Base size	8"*6",9"*7",10"*7",10"*8"
Hair length	6"
Density	Medium heavy
Wave	Slight wave 32mm
Available color	#1B,#1,#2

3 AUSTRALIA



Base design	French lace with full transparent poly perimeter 1 inch
Hair type	100% Indian Human Hair
Base size	8"*6",9"*7",10"*7",10"*8"
Hair length	6"
Density	Medium heavy
Wave	Slight wave 32mm
Available color	#1B,#1B10,#1B20,#1B30,#1B40,#1B50,#1B65,#2,#3,#4,#5,#6,#7

4 Q6



Base design	French lace with sides and back poly,with supporting thread all over,pu inside scalloped
Hair type	100% Indian Human Hair
Base size	8"*6",9"*7",10"*7",10"*8"
Hair length	6"
Density	Light medium
Wave	Slight wave 32mm
Available color	Q6 #NC, #1, #1B,#1C, #1B10, #1B20, #1B30, #1B40, #1B50, #1B65H, #1B80H, #2, #3, #4, #5, #6,#22R, #613,#210,#220,#240, #310, #320, #340, #350, #365, #380, #410, #440

5 *HOLLYWOOD*



Base design	French lace with full poly perimeter, front french lace 1 inch
Hair type	100% Indian Human Hair
Base size	10"*8"
Hair length	6"
Density	Light medium
Wave	Slight wave 32mm
Available color	#1C,#1B,#2,#3

SKIN



6 UTS

Base design	0.03mm-0.04mm thin skin , V-loops
Hair type	100% Indian Human Hair
Base size	10"*8"
Hair length	6"
Density	Light medium
Wave	Straight body wave
Available color	#1,#1B,#1B20,#1B30,#1B40,#1B50,#1B80H,#3,#4,#4ASH,#6,#7ASH,#17,#18,#20,#4R,#6RD,#10R,#20R,#22R,#30R,#613,#60RY,#240,#320,#340,#380H,#410,#420,#520,#540,#550,#565H,#580H,#610,#620,#640,#720,#740,#1720,#1750,#1765H,#1780H

7 TSII



Base design	0.06mm-0.08mm thin skin,with durable revert half knots
Hair type	100% Indian Human Hair
Base size	10"*8"
Hair length	6"
Density	Medium heavy
Wave	Straight body wave
Available color	#1,#1B,#1B20,#1B30,#1B40,#1B50,#1B65H,#1C,#2,#3,#4,#4ASH,#5,#6,#7,#7ASH,#17,#18,#20,#22R,#60RY,#240,#350,#365,#410,#510,#540,#610,#620

8 TSV



Base design

0.06mm-0.08mm thin skin , V-loops

Hair type

100% Indian Human Hair

Base size

10"*8"

Hair length

6"

Density

Medium heavy

Wave

Straight body wave

Available color

#1B20,#1B30,#1B40,#1B50,#1C,#2,#3,#4,#18,#22R,
#210,#220,#240,#310,#320,#380,#410,#440,#720

MONO



9 SPF



Base design	Super fine mono with 1 1/4" full poly coating, front folded lace 1/8" with curly baby hair
Hair type	100% Indian Human Hair
Base size	8"*6",9"*7",10"*8"
Hair length	6"
Density	Heavy
Wave	Straight
Available color	#1B,#1,#2

10 *VERSALITE*



Base design	French lace front 1inch,4" x 4" fine mono in center Polyskin in perimeter,formatted into 2 layers, designed to be cut down
Hair type	100% Indian Human Hair
Base size	10"*8"
Hair length	6"
Density	Medium heavy
Wave	Slight wave 32mm
Available color	#1,#1B,#1B20,#1B30,#1B40,#1B50,#1C,#2,#3,#4, #5,#6,#7,#240,#310,#380,#410,#540,#565,#580

11 **VERSALITE** **DIAMOND**



Base design

French lace front 1inch,4" x 4" fine mono in center
Polyskin in perimeter,formatted into 2 layers,
designed to be cut down

Hair type

100% Indian Human Hair

Base size

10"*8"

Hair length

6"

Density

Medium heavy

Wave

Slight wave 32mm

**Available
color**

#1B,#1C

15 ELASTIK



Base design	French lace front 1inch with zigzag , fine mono in center ployskin in perimeter
Hair type	100% Indian Human Hair
Base size	8"*6",9"*7",10"*7", 10"*8"
Hair length	6"
Density	Medium heavy
Wave	Slight wave 32mm
Available color	#1B,#1C

OTHERS



12 I-LACE



Base design	Injection lace (FDT)in the center,with ploy from temple to temple,front french lace 1inch,thread stiching the connection
Hair type	100% Indian Human Hair
Base size	10"*8"
Hair length	6"
Density	Medium
Wave	Straight body wave
Available color	#NC

16 BIO



Base design

French lace 1inch front,0.08mm thin skin the rest

Hair type

100% Indian Human Hair

Base size

10"*8"

Hair length

6"

Density

Medium

Wave

Straight body wave

Available color

#1B,#2,#3,#4,#5,#7,#22R,#60RY,#1B10,#1B20,
#1B30,#1B40,#1B50,#210,#220,#230,#240,#310,
#320,#360,#380,#410,#420,#430,#620,#720

17 FPA



Base design	Full thin skin 0.07-0.08mm thickness, afro curl texture hair
Hair type	100% Indian Human Hair
Base size	10"*8"
Hair length	6"
Density	Medium
Wave	Afro
Available color	#1,#1A

18 OSCAR



Base design	Poly with gauze in front, scalloped front edge, Poly coating in sides and back, formatted into 3 layers, designed to be cut down.
Hair type	100% Indian Human Hair
Base size	10"*8"
Hair length	6"
Density	Medium-130%
Wave	Slight wave 32mm
Available color	#1,#1B,#1B10,#1B20,#1B30,#1B40,#1B50,#1B65, #1B80,#1C,#2,#3,#4,#5,#6,#7,#22R,#210,#220, #240,#310,#320,#420,#520,#565

19 D7-5



Base design

Lace toupee for its high level of breathability, and ease of use and maintenance.

Hair type

100% Indian Human Hair

Base size

10"*8" ,6"*8" ,6"*9" ,7"*9" ,7"*10" ,8"*10"

Hair length

6"

Density

Medium-130%

Wave

Slight wave 32mm

Available color

2#,3#,1B,1B10,1B30,210,3#,4#,1B,1B10,1B20,2#,
3#,4#,1B,1B10,1B30,1B40,210,220,230,310,320,
330,2#,3#,4#,1B,1B10,1B20,1B30,1B40,210,220,
2#,3#,4#,1B,1B10,1B20,1B30,1B40,210,220,310

COLOR CHART

