

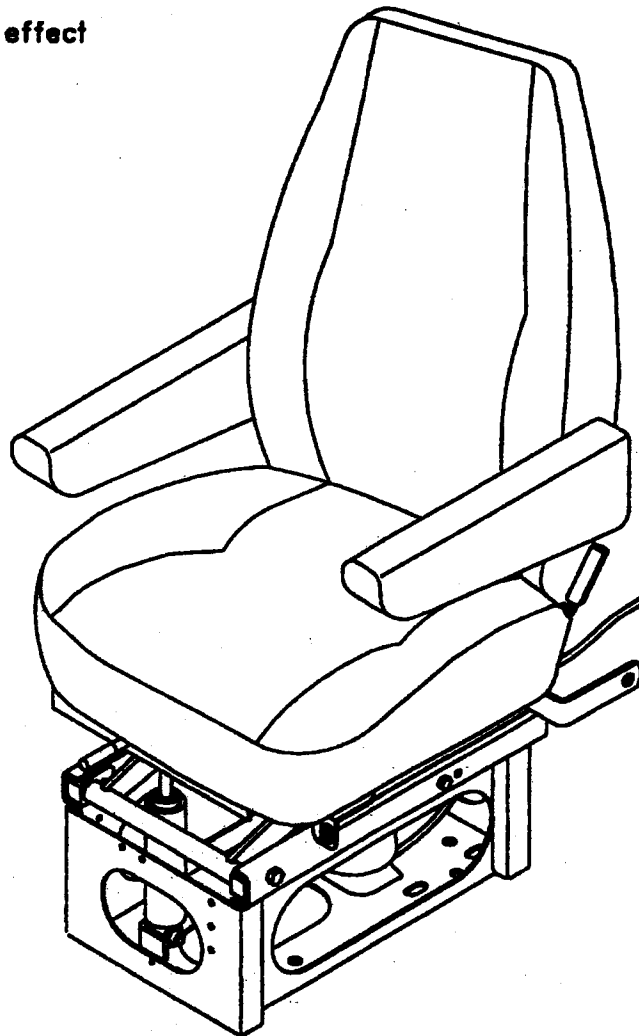
TM

Bostrom
S E A T I N G

HI PROFILE
BAJA

OPERATION AND SERVICE PARTS MANUAL

This seat conforms to
FMVSS 207 and 302 in effect
at time of manufacture



Seat shown with Lo Back

CATALOG NO.
1107646-033

©1992 BOSTROM SEATING INC.
REV C - 12/01

OPERATION WARNING

WARNING

SERIOUS INJURY MAY OCCUR IF HEAD CLEARANCE IS NOT ADEQUATE. BEFORE DRIVING OR RIDING IN VEHICLE, ENSURE THAT THERE IS ADEQUATE HEAD CLEARANCE AT MAXIMUM UPWARD TRAVEL OF SEAT. SEE OPERATION MANUAL.

To check for adequate head clearance, sit in the seat and slowly raise it to its maximum upward position (see Comfort Adjustments).

SEAT BELTS SHOULD BE WORN AT ALL TIMES WHEN OPERATING THE VEHICLE.

Federal Motor Vehicle Safety Standard

This seat conforms to Federal Motor Vehicle Safety Standards (FMVSS) 207, 222 and 302 in effect on the date of manufacture.

It is the responsibility of the installer to ensure that proper seat fastening hardware and seat belt anchorages (seat belt and tether belt system) are used in accordance with FMVSS 209 and 210.

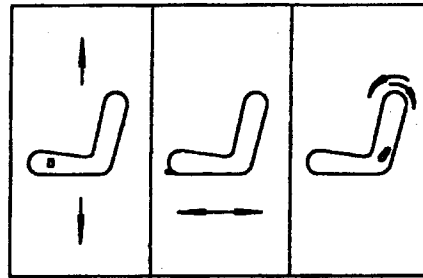
To achieve compliance with FMVSS 207, use only high strength fasteners and heavy duty washers when installing seat assembly.

Bostrom
S E A T I N G

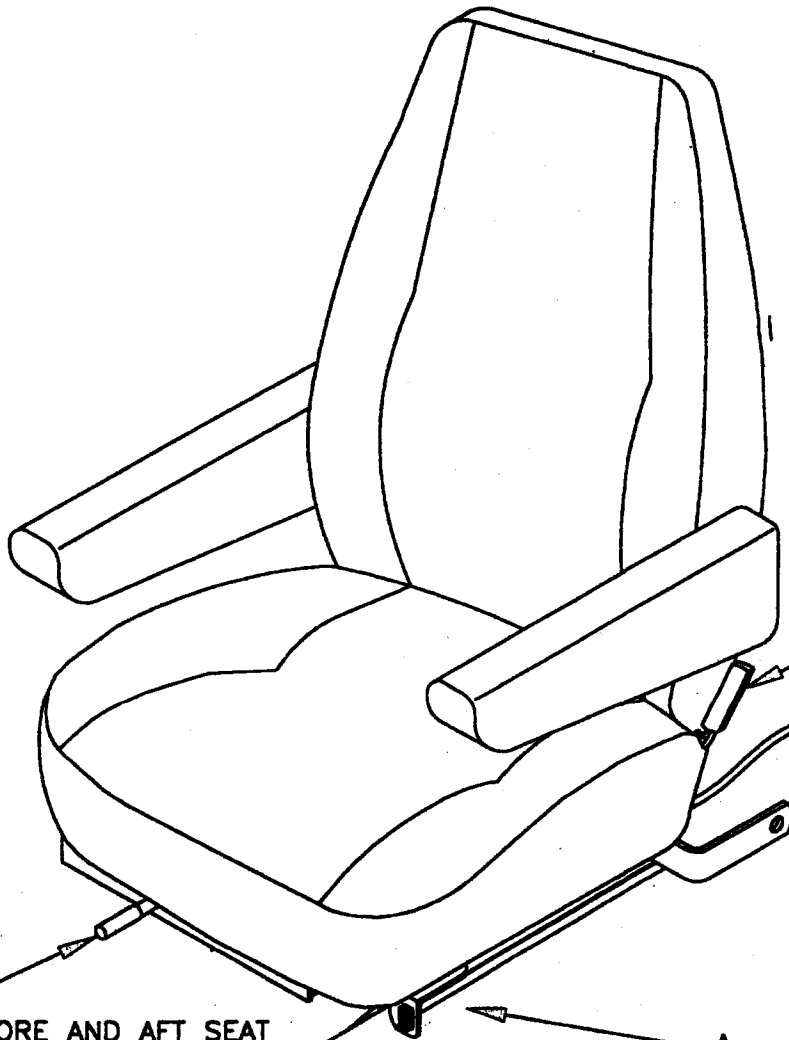
Vigo Road
P.O. Box 566
Piedmont, AL 36272
(256) 447-9051
www.bostromseating.com

COMFORT ADJUSTMENTS

After installation the following comfort adjustments can be made to ensure the best performance.



A B C



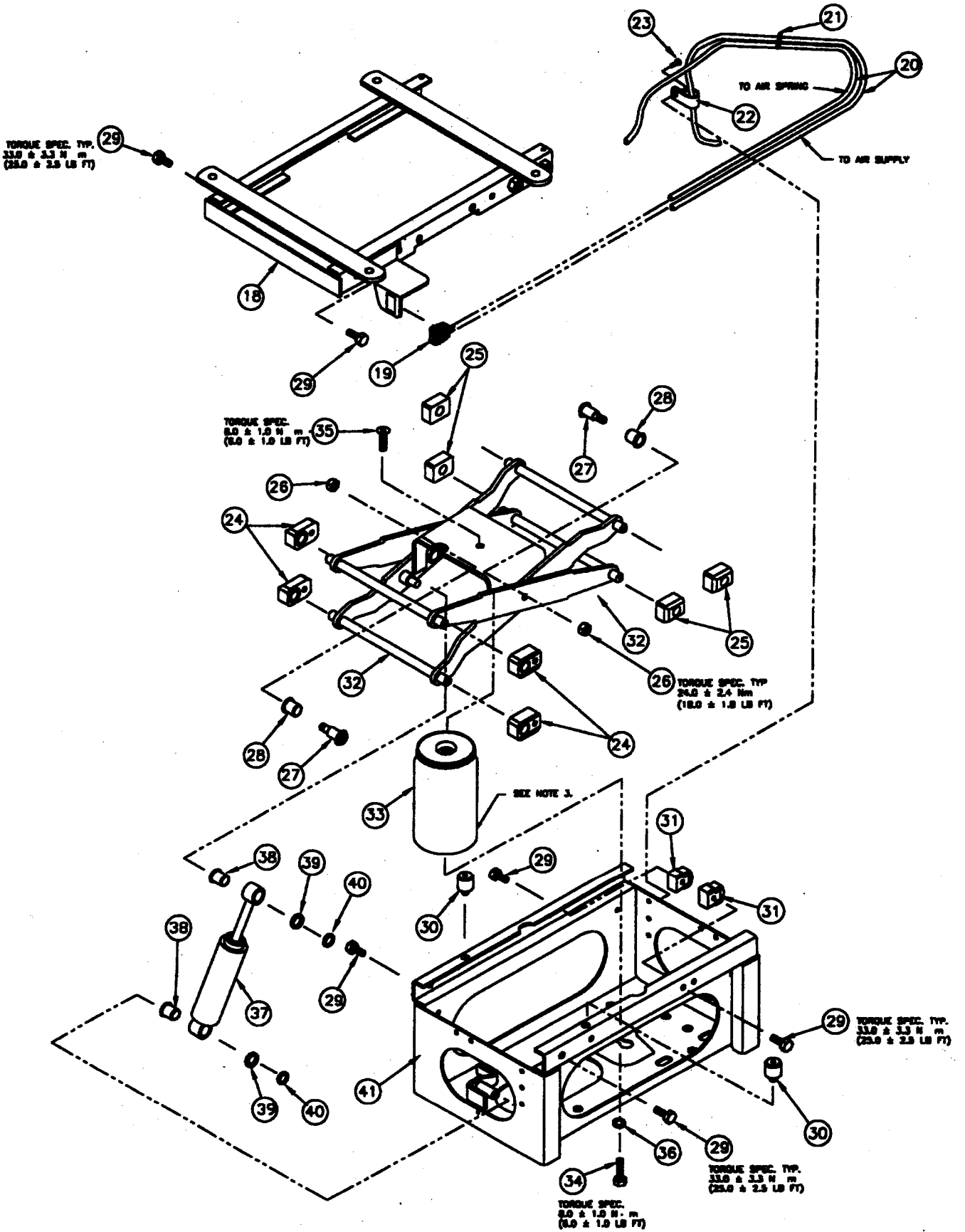
C - BACK ANGLE ADJUSTMENT
Lean forward slightly to remove pressure from seat back, hold handle rearward to adjust to any position within range.

B - FORE AND AFT SEAT POSITION ADJUSTMENT
FORE AND AFT ISOLATION
Hold lever to left to adjust seat position forward or backward. Isolation is provided when lever is in center (straight forward) position. To lock out move lever to right.

A - WEIGHT AND HEIGHT ADJUSTMENT

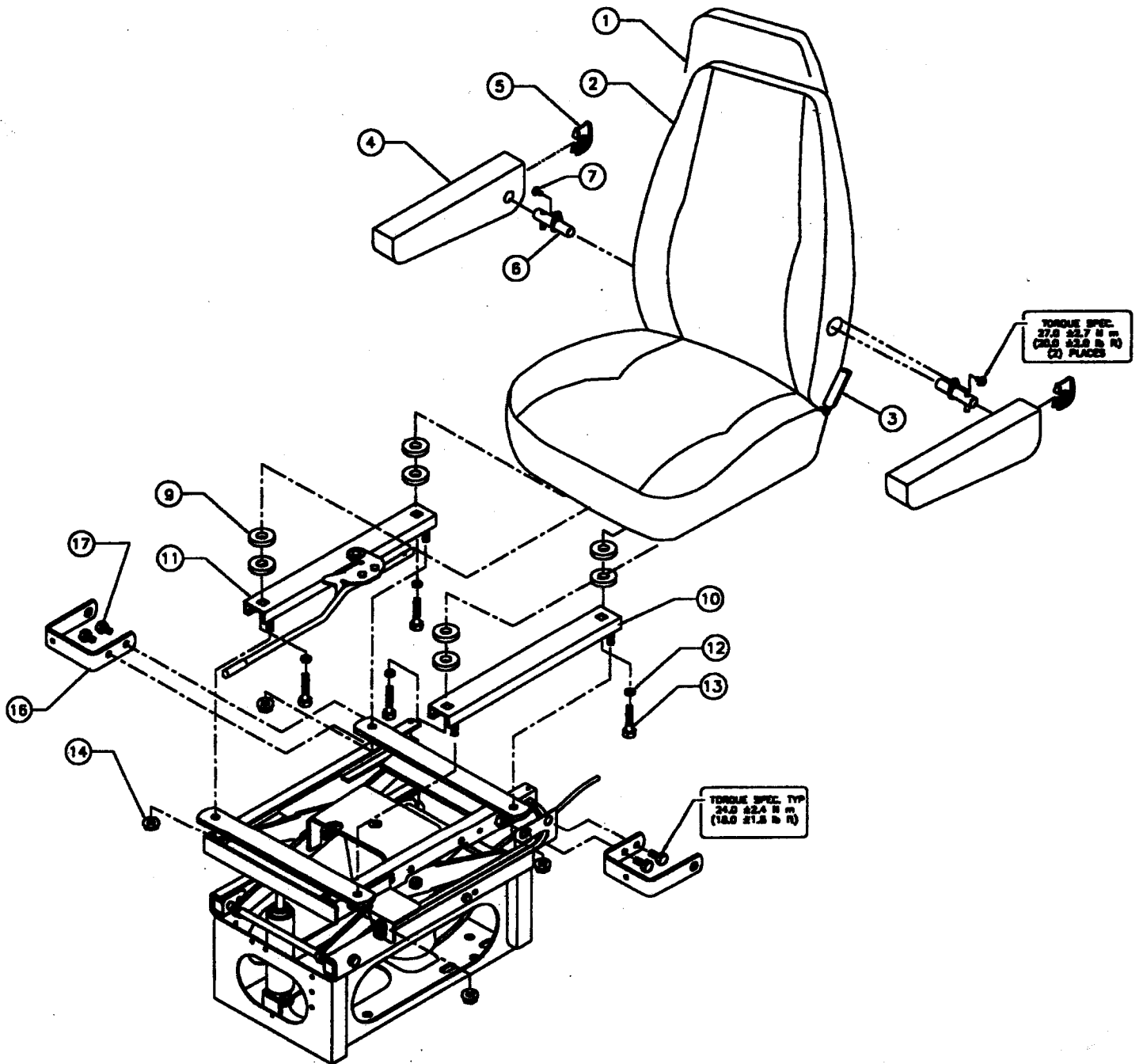
To raise seat push the top portion of the air valve. To lower seat push the lower portion of the air valve. When adjusted properly the seat should not top nor bottom against the end limits of the vertical travel under normal driving conditions. Adjusted height position should aid drivers visibility and vehicle control.

ILLUSTRATED PARTS BREAKDOWN



ALWAYS ORDER REPLACEMENT PARTS BY PART NUMBER—
NOT REFERENCE NUMBERS

ILLUSTRATED PARTS BREAKDOWN



ALWAYS ORDER REPLACEMENT PARTS BY PART NUMBER—
NOT REFERENCE NUMBERS

PARTS REPLACEMENT LIST

ORDERING INSTRUCTIONS : Order by Part Number , NOT Reference Number.

HOW TO USE : Find the corresponding part that you wish to replace on the exploded view illustration and note its reference number . Refer to list below and record part number , quantity required and description .

Order cover and pad kits and armrest by color and material .

ORDER FROM : Your truck dealer or Bostrom distributor for your area .

Ref. No.	Part No.	Description	Qty.	Ref. No.	Part No.	Description	Qty.
1.	**	High Back Upper		18.	6200948-001	Upper Plate Assy.	1
2.	**	Mid Back Upper		19.	6202399-001	Height Control Valve Includes Valve Only.	1
	6200845-001	High Back Frame Assy. Not Shown		20.	*	Air Line	5.4LF
	6200931-001	Mid Back Frame Assy. Not Shown		21.	*	Wire Tie 3"	1
	6200009-001	Seat Foam , Not Shown		22.	*	Air Line Clamp	1
	6200762-001	Back Foam High Back Not Shown		23.	*	Screw #10 .24*	1
	6200827-001	Back Foam Mid Back Not Shown			6222076-001	Suspension Hardware Kit , Includes Items 24-31	
				24.	*	Bearing Block	4
				25.	*	Slide Blocks	4
				26.	*	Nut M8	2
				27.	*	Pivot Bolt	2
				28.	*	Bearing	4
3.	6201619-001	Recliner Handle	1	29.	*	Screw Cap M8	6
4.	**	Armrest Assy.		30.	*	Rubber Bumper	2
				31.	*	Stop Block Assy.	2
5.	6222159-001	Armrest Insert	1	32.	6222113-001	Lever Assy.	1
6.	6222106-001	Armrest Shaft Kit , Includes Items 5 , 6 and 7			6222086-001	Air Spring Assy. Includes Items 33-36	
7.	*	Screw 5/16 x 1/2 Hex Tap	1	33.	*	Air Spring	1
8.	6222028-001	Slide Rail Kit , Includes Items 9-14		34.	*	Screw Cap M8x30MM	1
				35.	*	Screw Cap M8x1.25x25	1
9.	*	Washer Flat ZP	8	36.	*	Washer	1
10.	*	Seat Adjuster Non-Lock	1		6222067-001	Damper Kit , Includes Items 37-40	
11.	*	Seat Adjuster w/ Handle	1				
12.	*	Washer Flat .060x0.34x0.68	4	37.	*	Damper	1
13.	*	Screw Cap M8x30MM	4	38.	*	Bearing	1
14.	*	Nut Lock	4	39.	*	Washer	1
				40.	*	Fastener	2
15.	6222005-001	ICP Bracket Kit , Includes Items 16 and 17		41.	6200061-001	Riser Assy.	1
16.	*	ICP Bracket	1				
17.	*	Screw Cap M8x12MM	4				

* Except as noted , kits contain all items denoted by asterisk listed below each kit part number .

** See your dealer or Bostrom authorized distributor for Upper , Armrest , Suspension Cover or Cover pad kit part numbers appropriate for your seat .

REMOVAL / REASSEMBLE

Seat / Back Assembly Removal / Reassemble

1. Move seat to rearward position , remove screw caps (13) and Washers (12) and (9) . Move seat to forward position and repeat same procedure .

Air Spring Assembly Removal / Reassemble

1. Using air valve , raise seat to its maximum height , remove seat from vehicle .
2. Block suspension up with a spacer placed between upper plate (18) and riser (41) . Release air pressure from air spring so that seat is supported by spacer .
3. Disconnect air line (20) from air spring assy. (33) Remove top screw cap (35) and bottom screw (34) , remove air spring assy. from suspension .
4. Install new air spring so that air line fitting is facing rear of suspension , install top screw cap (35) and Torque to 6.0 +/- 1.0 ft-lbs . , Install bottom screw cap and Torque to 6.0 +/- 1.0 ft-lbs.
5. Reinstall air line by pushing line into fitting of air spring assy.
6. Fill air spring assy. with air and remove spacer block.

Damper Replacement

1. Be sure seat is at maximum height . Add air if needed .
2. Move seat to full rearward position to gain working room .
3. Remove fasteners (40) by using screw driver or pliers to twist off (Not reusable) .
4. Remove washers (39) and damper assy. (37) , Install new damper with bearing flanges to the outside of suspension , add washers (39) and install fasteners (40) .

Suspension Rebuild (Bearings) .

1. Bleed all air from supply line . Disconnect air supply line from seat . Using air valve , exhaust all air from air spring . Remove complete seat from vehicle .
2. Remove seat / back assy. (1) and slide rails (10),(11) from suspension per procedure shown .
3. Block up suspension with a spacer between upper plate (18) and riser (41). Remove air line from air spring assy. (33) .
4. Remove screw caps (29) from upper front bearing blocks (24) , remove upper plate assy. (18) by sliding it forward off bearing blocks (24) and slide blocks (25).

5. Remove air spring screws (34) and (35) , remove air spring (33) .
6. Remove damper assy. (37) See damper replacement procedures .
7. Remove screw caps (29) from lower front bearing blocks (24) and slide lever assy. (32) forward until bearing blocks (24) can be removed from channels of riser (41) , then slide levers rearward until slide blocks (25) can be removed . Be careful not to pinch fingers in lever assy.
8. Remove shoulder bolt (27) and hex nuts (26) from pivots of lever assy. (32) , inspect bearings , replace if worn .
9. Replace bearings (28) at pivots on lever assy. by pushing the old out and pressing in new . Flange of bearing (28) should be on the outside of inner lever.
10. Reassemble in reverse order . Torque shoulder bolts (27) to 18.0 +/- 1.8 ft-lbs.
11. Put new bearing blocks (24) and slide blocks (25) levers (32) with beveled surfaces outward and slide levers with blocks into channel of riser (41). Line up screws (29) with bearing blocks (24) and Torque screws (29) 25.0 +/- 2.5 ft-lbs .
12. After putting bearing blocks (24) and slide blocks (25) on levers (32) , slide upper plate assy. (18) over blocks . Line up screws (29) with bearing blocks (24) and Torque to 25.0 +/- 2.5 ft.-lbs.
13. Manually move suspension up and down to make sure there are no clearance problems . Be careful not to pinch fingers in levers .
14. Block up suspension and reinstall air spring assy. (33) . See air spring procedure for installation .
15. Reinstall damper assy. (37) , See damper procedure for installation .
16. Remove any blocks or spacers , reinstall slide rails (10) and (11) and seat/back assy.