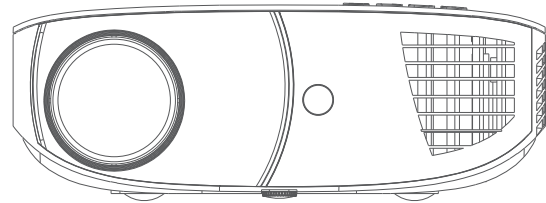


# WEWATCH V52

## PRIVATE SITUATIONAL THEATRE

—  
USER MANUAL



Model:V52

This device complies with Part 15 of the FCC Rules.

Operation is subject to the following two conditions:

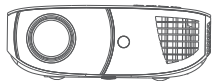
1. this device may not cause harmful interference,
2. this device must accept any interference received, including interference that may cause undesired operation.

RoHS FC CE



MADE IN CHINA

## PACKING LIST



1 Performance V52



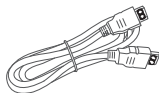
2 Remote



4 User Manual



5 AV Cable



6 HDMI Cable

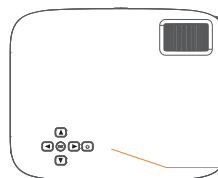


7 Power Cable

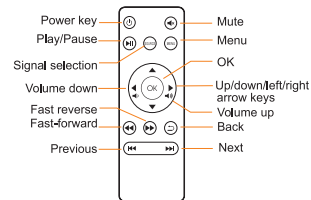
## FUNCTION OVERVIEW

1: Button function description: Under USB, in the USB main interface, press the down button to open the input source menu, Press the up key to open the main menu. Under other signal sources, when no menu is open, press down Press the key to open the input source menu, and press the up key to open the main menu. After opening any menu, press once The power button can exit this menu.

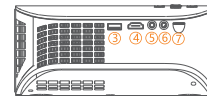
2: It is a little different under the same screen channel, long press the down button to open the input source menu, and long press the up button to open the main menu. Short press the up and down keys will switch to the up and down keys of the same screen module.



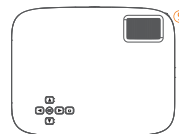
Up/down/  
right/left  
OK  
On/Off



1 CAMERA LENS 2 IR WINDOW



3 USB 4 HDMI1 5 AV IN 6 AUDIO OUT 7 TF

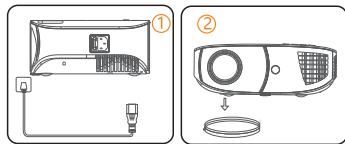


9 FOCUS



10 IR WINDOW 11 POWER SOCKET

## QUICK START



① Plug the power cord into an outlet.

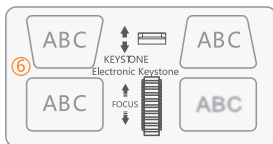
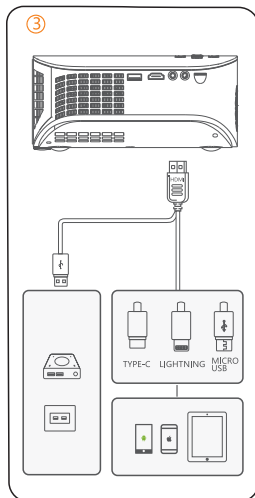
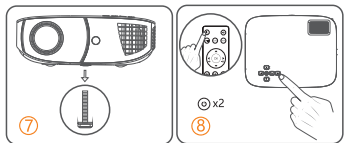
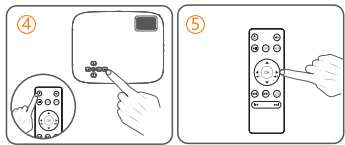
② Take off the lens cover.

③ Connect your device to the projector correctly.

④ Press the power button to turn on the projector.

⑤ Choose the right type of program to play.

⑥ Adjust the Electronic keystone and focus ring to get the best image performance.

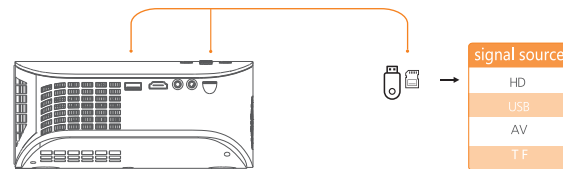


⑦ Adjust the kickstand accordingly.

⑧ Press the power button twice to turn off the projector.

## INPUT SOURCE

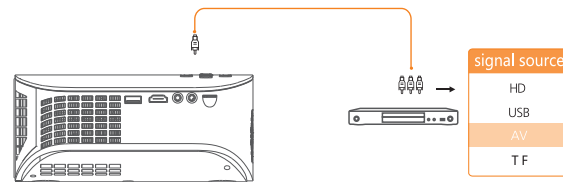
### A Multimedia Connection



### B HDMI Connection



### C AV Connection



## SCREEN MIRRORING

1. Before screen mirroring, please press the Source button on the projector/remote to switch to the interface of Screen Mirroring.
2. Press OK button to enter the interface of Screen Mirroring.

Screen Mirroring Through Wireless Connection

For IOS System

### Streaming with cellular data

1. Turn on the projector, select Screen Mirroring as the input source to enter the interface of the picture:



2. Go to the settings of your iOS mobile device and connect it to the WiFi of PROJECTOR-V52 (pwd:12345678).
3. Activate Screen Mirroring/AirPlay Mirroring on your iOS device and search for projector.
4. Select PROJECTOR-V52 from the searching results to connect.

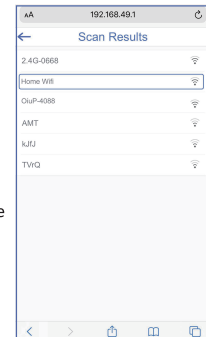
5. The display of your iOS mobile device will be projected to the wall/screen via cellular data after a successful connection.

### Streaming with Your Router's WiFi

1. Turn on the projector, select Screen Mirroring as the input source to enter the interface of the picture :



2. Go to the settings of your iOS mobile device and connect it to the WiFi of PROJECTOR-V52 (pwd:12345678).
3. Visit <http://192.168.49.1> with Mobile phone's built-in browser, tap WiFi AP > Scan, select your router's WiFi and enter the right password of Router's WiFi, then tap Connect to continue.
4. Your router's WiFi will be displayed on the interface of Screen Mirroring after a successful connection.
5. Get back to the WiFi setting of your iOS mobile device, then connect it to the same router's WiFi.



6. Activate Screen Mirroring on your iOS device and search for projector, then select PROJECTOR-V52 from the searching results to connect.
7. The display of your iOS mobile device will be projected to the wall/screen through WiFi connection.

#### Tips:

If you'd like to connect to another router's WiFi, please do the following steps: After the projector is started, in order to save your time to connect to wifi, the projector will automatically connect to the wifi that was connected last time. After the projector is connected to wifi, the wifi PROJECTOR-V52 of the projector will disappear from your wifi search results.

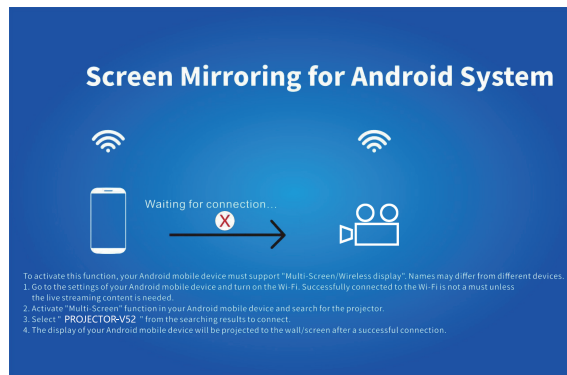
If you want to connect to other wifi at this time, you need to use the built-in browser of your phone, enter the new IP displayed on the projector (not 192.168.49.1), select "Forget" the wifi you have connected before, then wait a while, then repeat the steps in "Streaming with Your Router's WiFi".

#### For Android Systems

**Streaming with cellular data is the same steps of iOS system.**

**To Streaming with Your Router's WiFi,** Please turn on the projector, select Screen Mirroring as the input source. Then **press the OK button to enter the screen to the iOS screen as shown below.**

1. Activate this function on your Android device that support Multi-Screen/Wireless display. Names may differ from different devices.
2. Go to the settings of your Android mobile phone and connect it to the WiFi of PROJECTOR-V52(pwd:12345678).
3. Visit <http://192.168.49.1> with Mobile phone's built-in browser, tap WiFi AP > Scan, select your router's WiFi and enter the right password of Router's WiFi, then tap Connect to continue.



4. Your router's WiFi will be displayed on the interface of Screen Mirroring after a successful connection.
5. Get back to the WiFi setting of your mobile phone, then connect it to the same router's WiFi.

#### Important Tips for Wireless Connection

1. The fluency of screen mirroring with wireless connection will be affected by the network environment. A bandwidth of 100Mbit or more is recommended when using screen mirroring.
2. Make sure your mobile device is close to the projector when using wireless connection. A distance with 3.3ft is recommended.
3. Some mobile devices may not support screen mirroring due to the compatibility.
4. If the projector image freezes when you switch the screen mirroring interface, please long press OK button for 5 seconds on the projector/remote to do a reset, and the reset process will complete in 2 minutes.

#### Tips:

If you'd like to connect to another router's WiFi, please do the following steps: After the projector is started, in order to save your time to connect to wifi, the projector will automatically connect to the wifi that was connected last time. After

the projector is connected to wifi, the wifi PROJECTOR-V52 of the projector will disappear from your wifi search results.

If you want to connect to other wifi at this time, you need to use the built-in browser of your phone, enter the new IP displayed on the projector (not 192.168.49.1), select "Forget" the wifi you have connected before, then wait a while, then repeat the steps in "Streaming with Your Router's WiFi".

**Screen Mirroring** with the Original USB Cable

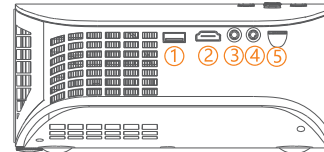
### iOS System

1. Turn on the projector, select Screen Mirroring as the input source, then press OK button on the projector/remote to switch to the interface of Screen Mirroring.
2. Connect your iOS mobile device to the 5V Out port of the projector with the ORIGINAL lightning cable (**Android phones do not support**).
3. Select Trust in the pop-up window of Trust This Computer.
4. The display of your iOS mobile device will be projected to the wall/screen after a while.

### Tips:

If the projection fails, please unplug the lightning cable from the projector and repeat the steps mentioned above.

## PROJECTOR CONNECTION



①



②



③



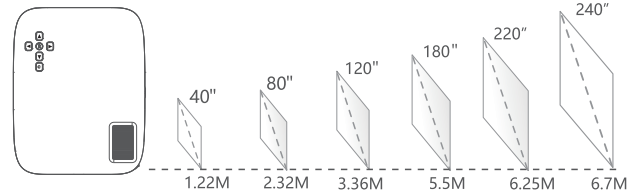
④



⑤



## PROJECTION DISTANCE&SIZE



## SPECIFICATION

DisplayTechnology	LightSource	NativeResolution	ResolutionSupported
LCD	LED	1920x1080	576i,576P,720i,720P,1080i,1080P

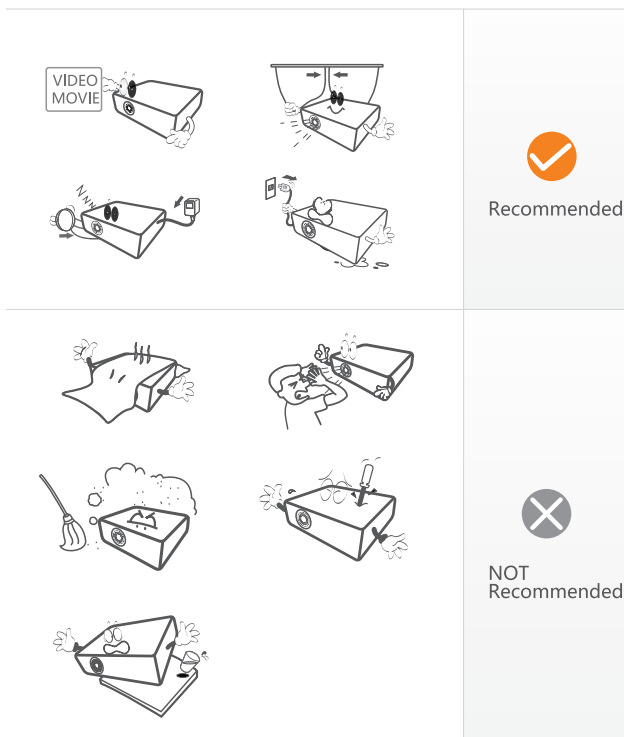
ProjectionDistance	ProjectionSize	Focus	AspectRatio
1.22M-6.7M	40"-240"	Auto	4:3/16:9/auto

Speaker	Electronic Keystone	Unit Dimension	InstallationType
3Wx4Ω	±50°	256*203*95mm	Front/Rear/Ceiling

Power Supply	UnitNetWeight	VideoFormat Supported	PhotoFormat Supported
AC100-240V	1.57kg	AVI/MP4/MKV/MOV/RMVB/3GP/MPEG1/MPEG2/H.264/XVID	BMP/JPG/JPEG/PNG/GIF

Ports	AudioFormatSupported		
HDMI*2/USB*1/5VOut*1 VGA*1/AVIN*1/ AudioOut*1/TFCardSlot*1	MP2/MP3/PCM/ WMA/AAC		

## NOTICE



## TROUBLESHOOTING GUIDE

### 1. Blurry Image

\*Adjust focus ring/keystone.

\*Projector and screen/wall must be in effective distance.

### 2. Remote Unresponsive

\*Make sure remote points at IR receiver directly.

\*Do not cover IR receiver.

\*Check the battery.

### 3. Mobile Connection

iOS: Genuine lightning to HDMI cable.

Android: Micro USB to HDMI adapter/Type C to HDMI cable.

### 4. Upside Down Images

Enter "Menu" on projector or remote to flip the projection image.