

YOU SHOULD HAVE RECEIVED



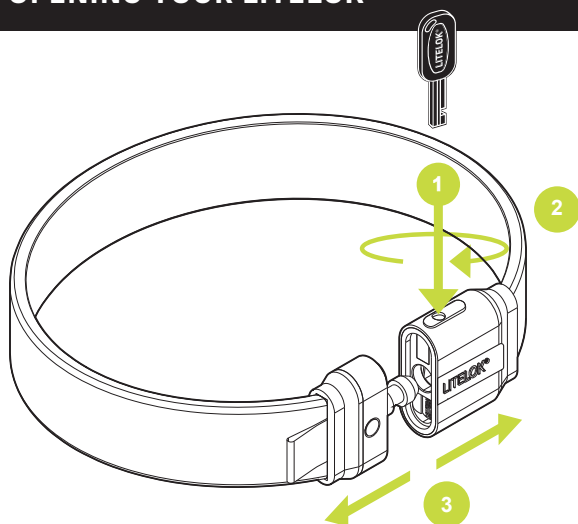
TWIN LITELOK®

You will have two sets if you have purchased a TWIN LITELOK®

You can use the same key on both locks and connect them together in series (as shown) or in parallel (e.g. front wheel/back wheel) for extra security.

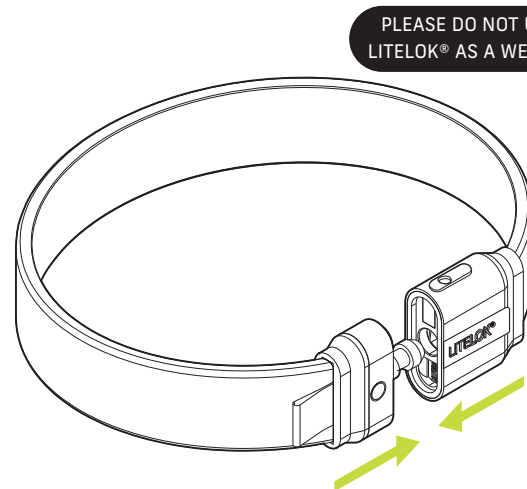


OPENING YOUR LITELOK®



- 1 FULLY INSERT THE KEY (*)
- 2 ROTATE THE KEY A HALF TURN (180°) CLOCKWISE
- 3 OPEN LITELOK KEEPING THE LOCK PART STRAIGHT
- 4 THE LITELOK WILL NATURALLY SPRING OPEN READY TO USE

LOCKING YOUR LITELOK®



PLEASE DO NOT USE LITELOK® AS A WEAPON

REVERSE THE SEQUENCE TO LOCK

There is a slight knack to opening Litelok which, once you've got it, becomes second nature. We suggest that you practice using Litelok a few times before taking it out with your bike.

- 5 HOLD LITELOK FIRMLY & TURN THE TWO ENDS IN
- 6 SNAP THE LITELOK SHUT
- 7 YOU DO NOT NEED THE KEY TO CLOSE THE LITELOK

!WARNING!

DO NOT LEAVE THE KEY IN THE LOCK.
IF YOU ACCIDENTALLY DROP THE LOCK & IT LANDS ON THE KEY, IT CAN DAMAGE THE LOCK/KEY

!WARNING!

KEEP HANDS AWAY FROM CLOSE LINE TO AVOID PINCHING
DO NOT LEAVE THE KEY IN THE LOCK.

LITELOK® ONE SPECIFICATION

LITELOK®	FLEXI-O	88W	100W	108W
Weight	1.1kg 2.4lb	1.31kg 2.8lb	1.40kg 3.0lb	1.46kg 3.2lb
Length	70.0cm 27.6in	88.5cm 34.8in	96.5cm 37.9in	103.5cm 40.7in
Width	5cm 1.9in	5cm 1.9in	5cm 1.9in	5cm 1.9in
Locking Circumference	74.0cm 29.1in	92.5cm 36.4in	100.0cm 39.4in	107.5cm 42.3in

- Sold Secure Bicycle Silver and ART2 rated
- Independent insurance rated
- Hardened steel lock casings
- Hard wearing outer sleeve
- Patented in-line lock allows multiple locks to be joined together for extra length
- Pick resistant disc detainer style lock mechanism
- Patented BOAFLEXICORE® composite strap employing high tensile steel in a polymer matrix
- Each single Litelok® supplied with 2 keys & 2 WrapStraps
- Rattle-free design, makes no noise when carried on the bike



LITELOK® ONE

FLEXI-O & WEARABLE

INSTRUCTIONS

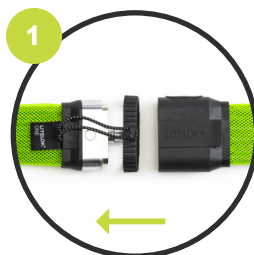
WEARING YOUR LITELOK® ONE (IF WEARABLE VERSION PURCHASED)

Wearing it is incredibly simple.

Wrap your LITELOK around your hips and close it using the integrated Lock Stopper.

The Lock Stopper keeps the LITELOK securely fastened around your body without locking so you don't need a key. It acts as a quick release mechanism to open and close the LITELOK, letting you easily put it on and off.

When it's time to secure your bike, simply take the LITELOK off your hips, remove the Lock Stopper and then click together to lock your bike as normal.



1
PLACE LOCKSTOPPER
ONTO LOCK



2
CLOSE LOCK



3
ATTACH SAFETY LOOP TO
PREVENT ACCIDENTAL OPENING

CINCHING YOUR LITELOK® ONE

We recommend you cinch your LITELOK into a tight circle, securing together using both WrapStraps provided. This will enable you to fit your LITELOK into the Frame Mounts with in the Frame of your bike.

Please see www.litelok.com for examples.



CARRYING YOUR LITELOK® ONE

Carry your LITELOK SAFELY.

We recommend either putting it in a bag or attaching it with BOTH of the two high visibility hook and loop wrapstraps provided within your bike frame. Please see www.litelok.com for examples.

This may not work for all frames in which case you need to find another location which is SAFE and SECURE. Failure to secure your LITELOK correctly may also result in damage to your bike's paintwork. If you are unsure whether your LITELOK is secured safely DO NOT SET OFF ON YOUR BIKE. Take time to adjust or find another way to carry your LITELOK.



USING YOUR LITELOK® KEYS

LITELOK ONE has been designed to be quick and easy to use.

DO NOT FORCE the key if the lock jams and ALWAYS push the key in fully before turning 180° clockwise. If you have trouble it might be because the key was not fully inserted. Wiggle the key gently, side to side and turn anticlockwise, remove and try again. If any issue persists please contact the place of purchase.

KEEP ONE AS SPARE and take note of the key code to register your product on Litelok.com to enable you to order replacements if required at a later date.



CARING FOR YOUR LITELOK® ONE

Wipe all surfaces with a soft cloth and a small amount of soapy water if required. Dry well and avoid introducing water into the locking mechanism. Lubricate with a small amount through key hole periodically. LITELOK is supplied with an aerospace-rated anti-corrosion protection coating and has been designed to resist dirt and corrosion but we recommend drying if it gets wet. This coating should last a year and you can reapply with a proprietary product. Please contact us for recommendations.

WARRANTY INFORMATION

Zeal Innovation Ltd (Zeal) provides a warranty that LITELOK (the product) is free from manufacturing defects in material and workmanship. This warranty is one year from the date of purchase unless otherwise stipulated in local law.

The warranty is void if the product is tampered with in any way. Upon return of the defective product to Zeal or its authorized distributor for inspection, free and clear of all liens and encumbrances and accompanied by proof of purchase and a statement of the defect/s, Zeal will replace the product.

This limited warranty may not be assigned or otherwise transferred in any way and may not be extended, altered or varied. To the fullest extent allowable by the laws applying

here to, this limited warranty is in lieu of any other warranties, either express or implied, including but not limited to any warranties of merchantability or fitness for a particular purpose, all of which are expressly excluded and disclaimed. Zeal Innovation Ltd will not be liable for loss of profits, any special, incidental, or consequential damages, which purchaser may sustain, any damages for claims by any third party or punitive damages, even in the event of notice of the possibility of such damages.

Zeal reserves the right to change the specification and design details of its products without notice in the pursuit of excellence.

e&oe

LITELOK®
LIGHT | FLEXIBLE | SECURE

www.litelok.com | hello@litelok.com

All Patents, Trademarks & Copyright are property of Zeal Innovation Ltd
t/a Litelok, Unit 10, Technium 1, Swansea Waterfront, Swansea SA1 8PH, UK