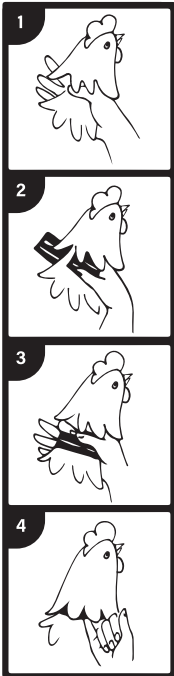




The No Crow Collar is a gentle and humane way to lower the volume of your rooster's crow, so you can enjoy your pet chickens without disturbing your neighbors. It works by slightly restricting the airflow in the rooster's neck, which makes the crow quieter. Don't worry, it doesn't hurt your rooster at all, and he will soon learn to crow less and softer.

Instructions for Proper Fitting & Adjustment:



1. To attach the collar, gently hold your rooster on your lap, under your arm, with his backside facing behind you. Use your thumb and index finger to make a ring under the feathers on the neck. Slide your hand upward towards his face, holding the feathers out of the way. Use one hand to support your rooster and the other to secure the collar.
2. With your opposite hand, lay one end of the collar on the back of the rooster's neck, positioning it low on the neck. Hold it in place with your thumb, leaving enough space for the hook and loop to make initial contact.
3. While still holding the collar with your thumb, wrap it around the neck and press it firmly into place. Start by securing the area where the hook and loop first overlap as tightly as necessary, then align the rest of the collar and gently press it securely into place.
4. Check the tightness of the collar. Only the tip of your smallest finger should fit under the collar's edges. Before you put your rooster on the ground, examine his breathing and give him a moment to get comfortable. Adjust the tightness as needed. On the first day, leave the collar slightly looser to help your rooster adjust to wearing it.

Give your rooster some treats and praise, you did it!

Important Tips:

- Check your rooster's coop and run and remove any sharp or pointed objects that could catch or hook the collar.
- Put the collar on your rooster in a quiet place, out of sight and hearing from the rest of the flock.
- Have crumble-sized treats ready to reward and help comfort your rooster.
- Keep an eye on your rooster for the first 30 minutes after putting on the collar. Don't leave it on overnight the first night. After that, you can leave it on all the time, but make sure to check it at least once a day for signs of wear or damage.

Additional tips to help make the collar fitting & use less stressful for you & your rooster:

- Make sure the collar is very low on his neck and under his feathers as much as possible. The feathers above the collar should cover the collar and help it stay in place. Smooth out the feathers around the collar, this will help your rooster not feel it too much.
- Don't tighten the collar too much at first. Let your rooster wear it a bit loose for a day or two, then adjust it tighter as needed.
- Watch your rooster closely for signs of breathing problems or discomfort. He may open his mouth slightly or pant softly at first, this is normal. If he opens his mouth wide, gasps, flails his head, or sinks to the ground, **immediately** loosen the collar.
- To help your rooster calm down and get used to the collar, you can put him in a box with some bedding and gently hold him in place for a few moments. Then let him go and see how he reacts. If he tries to back out of the collar, hold him again until he is calm. Repeat this until he stands still by himself.
- If the collar comes off or gets loose, it may be because there are too many feathers under it, or because your rooster moved his feathers and changed the fit of the collar. It may also be because other chickens are curious or pecking at it. To prevent this, make sure the collar is snug enough and covered by feathers as much as possible. Also, try to position the tag on the back of his neck, where it bends less.

We hope these tips help you and your rooster have an easier transition to using the No Crow Collar. If you have any questions or need further assistance, please email us at: info@mypetchicken.com