

GENERAL INFORMATION & SAFETY INSTRUCTIONS

PLEASE READ AND SAVE ALL INSTRUCTIONS BEFORE USING.

When using an electrical appliance, basic safety precautions should be observed, including the following instructions:

DANGER – To reduce the risk of electrocution:

1. Always unplug the charging base after the recharging cycle is complete or if the unit will be left unattended for long periods of time.
2. DO NOT allow the charging base to become wet or damp.
3. DO NOT place or store the charging base where it can fall or be pulled into water or any other liquid.
4. DO NOT reach for the charging base if it has fallen into water or any other liquid. Unplug immediately.
5. DO NOT use attachments not recommended by Evo..
6. DO NOT place charging base in or drop into water or other liquid.

Important Medical Safeguards

1. If you have had oral surgery or gum surgery within the past two months, consult your dental provider before using the product.
2. Contact your dentist if excessive bleeding occurs or if bleeding continues after the first week of using the sonic toothbrush.
3. If you have questions concerning usage with a pacemaker, consult your physician prior to use.
4. Discontinue use of this product and contact a dentist if you experience discomfort or pain.
5. This unit is designed for cleaning teeth and gums only. DO NOT use it for any other purposes.
6. The sonic toothbrush can be used with any toothpaste except those that contain essential oils or coconut oil.
7. If your toothpaste includes peroxide, baking soda or other bicarbonate (common in whitening toothpastes), thoroughly clean your brush head and handle with soap and water after each use, otherwise plastic cracking may occur.

Warnings

To reduce the risk of burns, electrocution, fire or injury to persons.

Read and understand all instructions. Failure to follow all instructions listed below may result in electric shock, fire or serious personal injury. The warnings, cautions, and instructions discussed in this instruction manual cannot cover all possible conditions and situations that may occur. It must be understood by the operator that common sense and caution are a factor which cannot be built into this product, but must be supplied by the operator. For the purposes of recharging the battery, only use the detachable supply unit provided with this appliance.

If the electric circuit is overloaded with other appliances, your appliance may not operate properly. The appliances should be operated on a separate electrical circuit from other operating appliances.

1. Close supervision is necessary when this product is used by, on or near children. Use this product **only** for its intended use as described in this manual. Do not use attachments not recommended by the manufacturer.
2. Never operate this product if it has a damaged cord or plug, if it is not working properly, if it has been dropped or damaged, or dropped into water. Return the product to a service center for examination and repair.
3. Never use the product while sleeping or drowsy.
4. DO NOT operate where aerosol (spray) products are being used or where oxygen is being administered.
5. A product should never be left unattended when plugged in.
6. Keep the cord away from heated surfaces.

CAUTION: A short power cord is provided to reduce the risk of personal injury resulting from becoming entangled in or tripping over a longer cord.

Safety Warnings

Although your appliance is easy to operate, for your safety, the warnings below must be followed:

1. DO NOT place the appliance near a heat source.
2. Use the appliance on a stable surface.
3. DO NOT unplug by pulling on the supply cord.
4. Always unplug this product immediately after charging.
5. DO NOT clean the toothbrush in the dishwasher.
6. DO NOT attempt to remove the battery unless disposing (see disposal instructions under Service Center).
7. The appliance must be unplugged before any cleaning/maintenance or if it appears to be faulty.
8. Children should be supervised to ensure that they do not play with the appliance.
9. This appliance is not intended for use by persons (including children) with reduced physical, sensory or mental capabilities, or lack of experience and knowledge, unless they have been given supervision or instruction concerning use of the appliance by a person responsible for their safety. Cleaning and maintenance should not be made by children without supervision.
10. This appliance has a polarized plug (one blade is wider than the other). As a safety feature this plug will fit in a polarized outlet only one way. If the plug does not fully fit in the outlet, reverse the plug. If it still does not fit, contact qualified electrician. Do not attempt to defeat this safety feature.
11. DO NOT incinerate this appliance even if it is severely damaged. The batteries can explode in a fire. **SAVE THESE INSTRUCTIONS**

USER INSTRUCTIONS

1. Place the charging base on a level and dry surface. Check the USB cord before you connect to an outlet.
2. Never use the charging base if it is damaged in any way. If the USB cable is damaged, always have it replaced with one of the original type in order to avoid a hazard.
3. Place the handle on the base. The battery indicator light on the handle will turn on to indicate the handle is charging. Please note: the battery indicator light will stay on until the handle is finished charging. The light will turn off when the handle is fully charged.
4. It will take approximately 24 hours for a full charge the first time. The charging time may be shorter for recurring charges. The charging base may stay plugged in, but it is recommended that the unit be unplugged.
5. Fully discharge the handle at least every 6 months in order to maintain the maximum capacity of the rechargeable batteries. This can be achieved by unplugging the base and letting the handle run down with normal use.
6. Insert the brush head onto the shaft of the handle. A small gap (about 1mm) between the brush head and the handle allows for free motion of the brush head while brushing.
7. Apply toothpaste to the brush head before switching it on. When the toothbrush is turned on, the brush head vibrations will intensify as it reaches the full mode speed.
8. Select the desired mode – Standard, Sensitive, Whitening, or Deep Clean – by repeatedly pushing the mode button. The mode lights will light up with each push and will switch from Standard to Sensitive, Whitening, Deep Clean, and then repeat.
9. Move the brush head gently along your teeth and gum line and allow the bristles to stay on the surface of each tooth for a few seconds.
10. The toothbrush has a 2 minute smart timer with 30 second intervals to remind you to move to the next quadrant. This allows the user to concentrate on each quadrant of their mouth for 30 seconds with a total brushing time of 2 minutes. DO NOT forget to reach all areas of your teeth including the inner and chewing surfaces.
11. After 2 minutes, the handle will automatically turn off. After use, rinse the brush head and wipe the handle dry.

NOTE: When you first use your sonic toothbrush, you may experience slight bleeding. This should stop after a few days when your gums get used to the toothbrush. If the bleeding persists, please consult your dentist or hygienist.

Charging Instructions

1. When the battery is low (less than 10%), the battery indicator light on the handle will turn on.
2. When the battery is less than 5%, the battery indicator light will blink for 8 seconds and then turn off. The handle will shut off and not start.
3. Be sure to turn off the toothbrush before charging. Place the handle on the charging base.
4. While the toothbrush is charging, the battery indicator light will turn on and the charging base light will have a pulsating effect (light fades on and off). During charging, the toothbrush may get warm – this is normal.
5. When the toothbrush is finished charging, the battery indicator light and charging base light will turn off.

Mode Information

1. Press the mode button to select your mode. The built-in memory will remember the last used mode and set the handle to this mode when turned on.
2. There are four modes on the handle in this order:
 - A. Standard: the standard mode for superior teeth cleaning
 - B. Sensitive: recommended for those with braces, or sensitive gum and/or teeth
 - C. Whitening: recommended for removing surface stains
 - D. Deep Clean: recommended for gentle gum stimulation
3. If you press the mode button while brushing, the toothbrush will switch to the next mode.

CLEANING AND MAINTENANCE

Brush Heads

After each use, rinse the brush head for several seconds under running water. You may soak the brush head in water every 2 to 4 weeks to keep it hygienically clean.

Charging Base and Handle

Periodically clean the exterior of the handle with a soft, slightly damp towel or paper towel. Remove the brush head and rinse the metal shaft with warm water to remove any residual toothpaste. Dry the entire surface thoroughly before placing the handle back on the charging base. Periodically clean the exterior of the charging base with a dry paper towel.

Maintenance Warnings

1. Disconnect the charging base cord from the outlet before cleaning.
2. DO NOT immerse the charging base, power cord or adapter in water or any other liquids.
3. DO NOT wrap the power cord around the charging base.
4. DO NOT clean in the dishwasher.
5. This unit has no serviceable parts, therefore NO altering or servicing should be performed by any unauthorized representative.

Storing

Store the unit in a dry location. Do not place any heavy items on top of the unit during storage as this may result in possible damage of the toothbrush.

Warranty

This product comes with a 1 year warranty. Warranty may be void for, but not limited to, the following:

1. Brush heads
2. Damage caused by misuse, abuse, neglect, alterations, and/or unauthorized repairs
3. Normal wear and tear, including chips, scratches, abrasions, discoloration, or fading

SERVICE CENTER

Service Center

If you have any questions in regards to the operation of this appliance, please contact our service center at:

Ashtel Studios Inc.
Ontario, CA 91761
1-877-274-8358
(Mon - Fri 11:00 AM - 8:00 PM EST)
support@getevo.net

Technical Specifications

Rated Wattage	≤ 2.8W
Rating Voltage	DC 3.7V
Rechargeable Battery	Lithium-ion battery

Troubleshooting

Problem	Possible Cause	Solution
The toothbrush doesn't work	You have just purchased the product or it has not been used for more than 3 months	Charge the handle for at least 24 hours
Weak or diminished vibration	The toothbrush is pressed hard against your teeth	Place the brush head gently against your teeth
	The toothbrush is low on battery	Charge the handle for at least 24 hours
The toothbrush operates for a short period of time even immediately after being charged	The battery has reached the end of its life cycle	Contact service center for support
	Charging time was insufficient	Charge the handle for at least 24 hours

Disposal

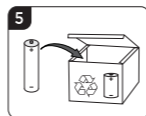
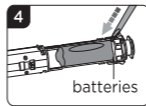
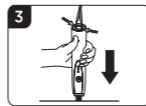
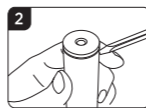
The power source of this product is a lithium-ion battery which can be recycled. At the end of the product's life, always remove the battery before you discard the product, and recycle or dispose of the battery according to local waste management requirements. If you have recycling questions, contact your local waste management office.

Removing and Recycling the Battery

Only remove the battery and disassemble the product when ready to discard it. Doing so earlier will destroy the product. Observe basic safety precautions.

1. Before removing the battery, be sure to completely drain the unit of power.
2. Use a flat-head screwdriver to break off the bottom screw cover.
3. Holding the handle upside down, press the toothbrush shaft and remove the two hooks to release the internal components of the handle.
4. Insert the screwdriver next to the battery connections and twist it out. Remove the circuit board and pry the battery from the plastic carrier.
5. Recycle or dispose of the battery properly. Ask your local waste management office if they accept the remaining toothbrush components for recycling.

CAUTION: Be careful not to short-circuit the negative and positive poles of the battery.



Environmental Protection

If the appliance should no longer work at all, please make sure that it is disposed of in an environmentally friendly way.

FCC Statement

FCC Information

This device complies with part 15+18 of the FCC Rules. Operation is subject to the following two conditions: (1) This device may not cause harmful interference, and (2) this device must accept any interference received, including interference that may cause undesired operation.

WARNING: Changes or modifications to this unit not expressly approved by the party responsible for compliance could void the user's authority to operate the equipment.

NOTE: This equipment has been tested and found to comply with the limits for a Class B digital device, pursuant to part 15+18 of the FCC Rules. These limits are designed to provide reasonable protection against harmful interference in a residential installation. This equipment generates, uses and can radiate radio frequency energy and, if not installed and used in accordance with the instructions, may cause harmful interference to radio communications. However, there is no guarantee that interference will not occur in a particular installation. If this equipment does cause harmful interference to radio or television reception, which can be determined by turning the equipment off and on, the user is encouraged to try to correct the interference by one or more of the following measures:

- Reorient or relocate the receiving antenna.
- Increase the separation between the equipment and receiver.
- Connect the equipment into an outlet on a circuit different from that to which the receiver is connected.
- Consult the dealer or an experienced radio/TV technician for help.

evo®



RECHARGEABLE SONIC TOOTHBRUSH
INSTRUCTION MANUAL