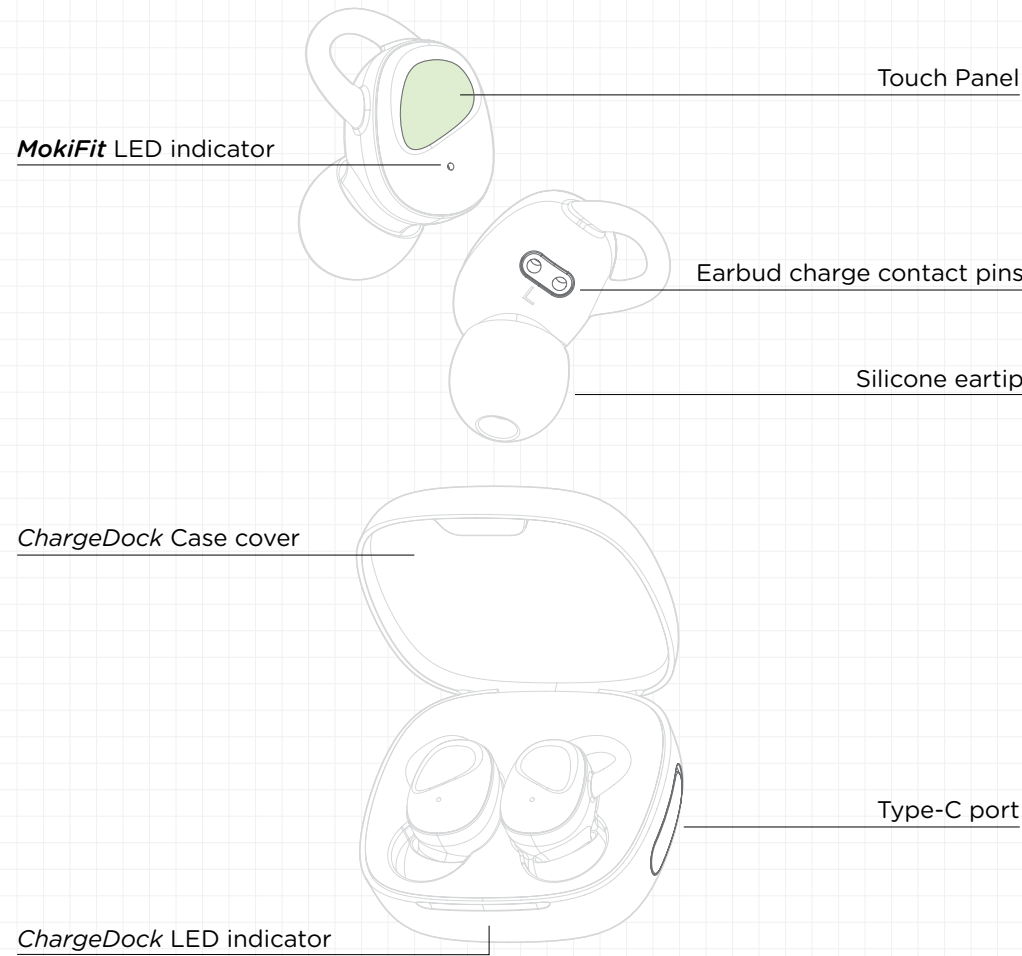




MokiFit
TWS Earphones

PRODUCT OVERVIEW



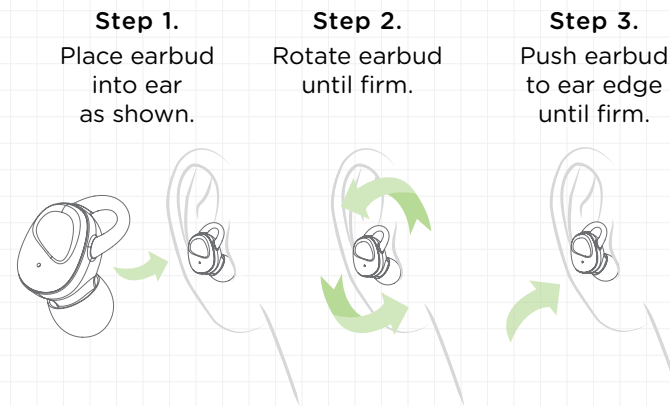
LED INDICATOR

Item	Speed	Action
Earbuds	Flashes 3 times	Power on
Earbuds	Flashes 3 times	Power off
Earbuds	Flashes slowly	TWS pairing - Master earbud
Earbuds	Flashes twice	TWS pairing - Secondary earbud
Earbuds	Flashes slowly	Wireless pairing successful - Master earbud
Earbuds	Flashes twice	Wireless pairing successful - Secondary earbud
Earbuds	Flashes slowly	Disconnected - Master earbud
Earbuds	Flashes twice	Disconnected - Secondary earbud
Earbuds	Glows solid	Earbuds charging
Earbuds	LED turns off	Earbuds fully charged
Earbuds	Flashes for 8 secs	Low battery/call - Master earbud
Earbuds	Flashes every 5 secs	Low battery/call - Secondary earbud
Earbuds	Flashes for 8 secs	Connected to phone - Master earbud
Earbuds	Flashes every 5 secs	Connected to phone - Secondary earbud
ChargeDock	Glows solid	Charging (when earbuds in ChargeDock case)
ChargeDock	LED turns off	Fully charged
ChargeDock	Flashes	Wirelessly charging
ChargeDock	LED on for 3 secs	Turn on (open ChargeDock case)
ChargeDock	LED on for 3 secs	Earbuds automatically power on and pairing
ChargeDock	LED on for 3 secs	Turn off (close ChargeDock case)
ChargeDock	Flashes three times	Earbuds charge after closing case
ChargeDock	Flashes three times	Reset

WARNING - PLEASE READ FIRST

For best results, charge your *MokiFit* TWS Earphones fully before use.
Charging from an empty battery should take 1.5 to 2 hours.

HOW TO WEAR



WARNING: Please do not force the silicone eartips of *MokiFit* TWS Earphones into ear canals.

TURNING EARBUDS ON/OFF

Method One

Turn ON : Open the *ChargeDock* case cover to turn on.
Turn OFF : Close the *ChargeDock* case cover to turn off.

Method Two

If the earbuds are powered off, you can turn them on by holding the Touch Panel for 3 seconds.

TOUCH PANEL FUNCTIONS

Phone Calls

Double tap	Answer incoming call Hang up current call
Long hold 3 secs	Reject incoming call

Playing Music

Double tap right earbud	Play/Pause music
-------------------------	------------------

Voice Assistant

Double tap left earbud	Enter voice assistant Exit voice assistant
------------------------	---

Volume/Track Control

Tap left earbud	Volume down
Tap right earbud	Volume up
Long touch left earbud 2 sec	Track down
Long touch right earbud 2 secs	Track up

PAIRING YOUR MOKIFIT EARPHONES

TWS Pairing

1. Open the *ChargeDock* case cover. The left and right earbuds will automatically power on.
2. Long press the Touch Panel for 8 seconds to delete pairing record.
3. Long press the Touch Panel for 3 seconds to turn on earbuds auto-pairing mode. After a few seconds, the two earbuds will pair.
4. Search wireless devices on your mobile phone or device. Select "MokiFit TWS". You will hear "pairing success", and the master earbud will flash white slowly while the secondary earbud will flash white twice.

Wireless Pairing

1. Open the *ChargeDock* case cover. The left and right earbuds will automatically power on.
2. Long press the Touch Panel for 3 seconds to turn on earbuds auto-pairing mode. After a few seconds, the two earbuds will pair together.
3. Select "MokiFit TWS" on your play device.
4. On pairing success, the master earbud will slowly flash white while the secondary earbud will flash white twice.

TWS Reconnectiong

1. Open the *ChargeDock* case cover.
2. Earbuds will automatically enter TWS pairing state.
3. Earbuds will automatically reconnect to a previously paired device that is in range.

Reset Pairing

When the earbuds are off, long press the Touch Panel for 8 seconds. A series of beeps will play 3 times, indicating a successful reset. The LED indicator will flash white 3 times.

E-WASTE

This product bears the selective sorting symbol for waste electrical and electronic equipment (WEEE).

This means that this product must be handled according to the European Directive 2002/96/EC in order to be recycled or dismantled to minimize its impact on the environment. For further information, please contact your local or regional authorities.

Should you need to dispose of this product, please note that electrical products should not be disposed of with household waste. Please dispose of speaker thoughtfully.



CHARGING

Charging Earbuds

Place earbuds in *ChargeDock* to charge. The LED on the earbuds will glow solid white indicating the earphones are charging. When the earbuds are fully charged, the LED will turn off .
When you place the earbuds in the *ChargeDock*, the *ChargeDock* LED will glow solid white indicating charging. The case lid of the *ChargeDock* must be closed to charge the earbuds.

Charging ChargeDock with Type-C Port

Connect the *included charge cable* to a USB port on a PC or USB charge adaptor. Confirm orientation and connect the Type-C to the port on the side of the *ChargeDock* (see *Product Overview*).

Charging ChargeDock with Wireless Charge Pad

Place the *ChargeDock* on a wireless charge pad for wireless charging.
The *ChargeDock* LED indicator will flash white when wireless charging is enabled.

BATTERY HEALTH

To prevent the possibility of the battery from leaking, heating or catching fire, please follow these precautions:

Warnings

- Please use supplied USB charging cable to charge the *ChargeDock*.
- Please disconnect charge cable after earphones are fully charged.
- Do not continue to charge *ChargeDock* after they are fully charged.
- Do not use or leave the earphones or *ChargeDock* near a heat source such as a fire or a heater.
- Do not place the earphones or *ChargeDock* in any liquid, fire or on a heater.
- Do not hit or throw the earphones or *ChargeDock*.

Cautions

- Do not use or leave the earphones or *ChargeDock* in very high temperatures (ie. in direct sunlight or in a vehicle in extremely hot conditions).
- Do not use the earphones or *ChargeDock* where there is a lot of static electricity, otherwise the safety devices within the earphones can be damaged.
- The earphones and *ChargeDock* should be stored at room temperature.
- The *ChargeDock*'s battery should be charged and discharged every so often in order to activate and restore the battery's energy.
- Please follow battery waste recycling guidelines when disposing of the earphones.