



Star Stabil-Air

High Performance Quality
Air Cell Cushions

 **etac**[®]

Star Stabil-Air

The Stabil-Air cushion is the perfect blend of multi air cell cushion with soft foam cylinders within each air cell.

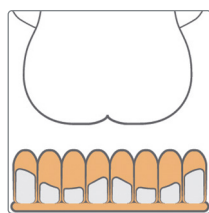
The new generation air cell cushion

Each Stabil-Air cushion has two sizes of foam cylinders. The cylinders on the outside are higher, while those under the buttocks, coccyx and legs are lower, creating an anatomically shaped secondary layer of skin protection. This increases the stability and eases transfer to and from the cushion. The Stabil-Air cushion has one chamber which is easy to use and provides stability.



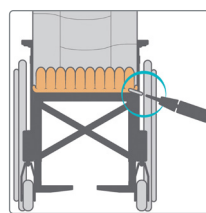
Star Stabil-Air cushions come complete with a fitted cover, hand pump, manual and repair kit.

Features



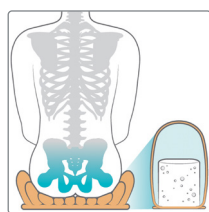
Single compartment with concealed stability

The Stabil-Air cushion has a soft foam cylinder within each air cell. They are anatomically contoured and add exceptional stability to a single compartment air cell cushion.



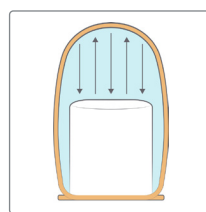
Easy Handling

One compartment entails only one valve adjustment. The Stabil-Air cushion is an ideal combination of easy handling and stability, which can improve sitting tolerance over time.



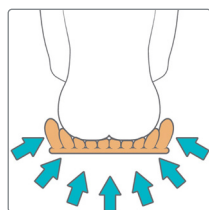
Immersion and envelopment

The soft foam cylinders contain a considerable amount of air and allow the user to immerse into the cushion to obtain the best envelopment. The Stabil-Air is available in two cell heights: 7.5 cm and 10 cm.



Foam cylinder

Each cell has an inbuilt soft foam cylinder. All air cells are 7.5 cm and 10 cm high. The height of the foam cylinders creates an anatomically shaped design with higher cylinders at the lateral sides. Stabil-Air is the new generation one-chamber cushion.



Pressure redistribution

The air cell formability ensures very good pressure redistribution properties. They adapt to the body structure and minimize the risk of tissue deformation. Perfect for prevention and care of pressure ulcers.

Stabil-Air - 1 chamber
7.5 cm
10 cm

26 x 26 cm	ESSA30909-1	ESSA40909-1
26 x 30 cm	ESSA30911-1	ESSA40911-1
26 x 34 cm	ESSA30913-1	ESSA40913-1
30 x 26 cm	ESSA31109-1	ESSA41109-1
30 x 30 cm	ESSA31111-1	ESSA41111-1
30 x 34 cm	ESSA31113-1	ESSA41113-1
30 x 39 cm	ESSA31115-1	ESSA41115-1
34 x 26 cm	ESSA31309-1	ESSA41309-1
34 x 30 cm	ESSA31311-1	ESSA41311-1
34 x 34 cm	ESSA31313-1	ESSA41313-1
34 x 39 cm	ESSA31315-1	ESSA41315-1
34 x 44 cm	ESSA31317-1	ESSA41317-1
39 x 30 cm	ESSA31511-1	ESSA41511-1
39 x 34 cm	ESSA31513-1	ESSA41513-1
39 x 39 cm	ESSA31515-1	ESSA41515-1
39 x 44 cm	ESSA31517-1	ESSA41517-1

Stabil-Air - 1 chamber
7.5 cm
10 cm

39 x 49 cm	ESSA31519-1	ESSA41519-1
39 x 53 cm	ESSA31521-1	ESSA41521-1
44 x 34 cm	ESSA31713-1	ESSA41713-1
44 x 39 cm	ESSA31715-1	ESSA41715-1
44 x 44 cm	ESSA31717-1	ESSA41717-1
44 x 49 cm	ESSA31719-1	ESSA41719-1
44 x 53 cm	ESSA31721-1	ESSA41721-1
49 x 39 cm	ESSA31915-1	ESSA41915-1
49 x 44 cm	ESSA31917-1	ESSA41917-1
49 x 49 cm	ESSA31919-1	ESSA41919-1
49 x 53 cm	ESSA31921-1	ESSA41921-1
53 x 39 cm	ESSA32115-1	ESSA42115-1
53 x 44 cm	ESSA32117-1	ESSA42117-1
53 x 49 cm	ESSA32119-1	ESSA42119-1
53 x 53 cm	ESSA32121-1	ESSA42121-1

User weight

No limits as long as the correct sized cushion is used for the user.

Material cushion

High quality latex free gold coloured neoprene. Adaptable and flame resistant.

Material, cover

Top: 92% Polyester, 8% Spandex Sides: 3mm Black Stretch Spacer
Bottom: PU anti-slip. Flame resistant.

Incontinence cover

Top & sides: 78% Nylon 22% Spandex covered with a Polyurethane film.
Flame resistant. Bottom: PU anti-slip.

Cleaning

Cushion Cleaning: Hand wash with soap, baking soda, or vinegar.
For disinfection, use 70% disinfectant solution.



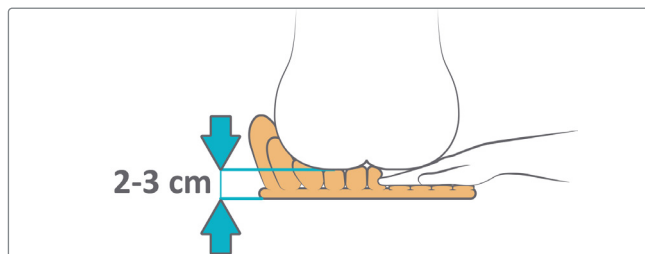
Cover Cleaning: Machine wash 60° C, no bleach.



How to adjust the air pressure



- Inflate the cushion.
- Position the user on the cushion.
- Let air out.



- Hand check, 2–3 cm distance between the cushion bottom and the user's buttocks.
- With asymmetry, always check the lowest side first.
- If necessary, more air can be inflated with the user positioned on the cushion.
- With higher cells, the user will immerse deeper into the cushion and the pressure redistribution increases.

Accessory


Incontinence cover

Smooth and 4-way stretch. Breathable.



Etac is a world-leading developer and provider of ergonomic assistive devices and patient handling equipment. Our heart lies in the solutions that optimise quality of life for the individual, their family and caregivers.

For the latest news and continuously updated product information – visit: www.etac.com

Etac AB
Kista Science Tower
SE-164 51 Kista, Sweden
Tel +46 371 - 58 73 30
info@etac.se www.etac.com

 **etac**[®]
Creating Possibilities