



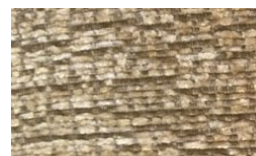
### Ecclesfield Rise & Recline

The Ecclesfield Wall Hugging Rise and Recliner Chair is a stylish addition to any living room offering superior comfort, featuring both lift and recline action. Waterfall pillow back design with zip opening to allow adjustment of cushion filler. A wealth of features including detachable arm and headrest covers for easy cleaning, side pockets for storing remote controls and magazines, castors for easy movement and an easy to use 2 button handset.

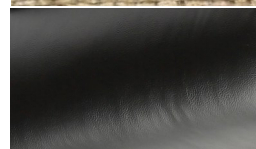


- \* Single OKIN motor drive system
- \* Wall saver (45cm minimum from wall)
- \* Lift and recline action
- \* Castors for easy moving
- \* Easy to use 2 button remote
- \* 1 year warranty
- \* Weight capacity 160kg

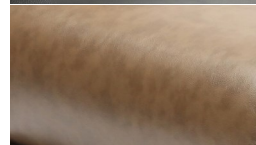
Mink  
Product Code: VG700MK



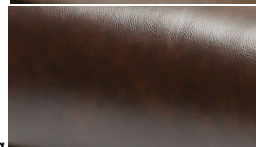
Fabric Oat  
Product Code: VG700OAT



PU Black  
Product Code: VG700LBL



PU Nutmeg  
Product Code: VG700LBE



PU Chestnut  
Product Code: VG700LBR

#### Specifications

Overall height .....	112	Seat height.....	51
Overall depth .....	87	Armrest height.....	14
Overall width .....	90	Unit weight .....	64
Seat depth.....	51	Weight capacity .....	160
Seat width.....	50		

*Measurements in cm, weight in kg*