

### Bariatric 3 Core Cushion

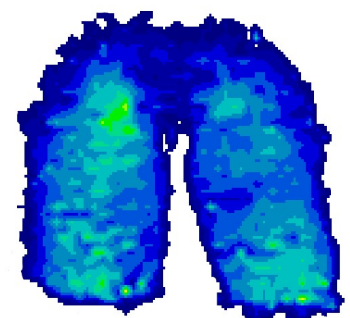
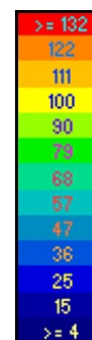
#### Foam Specifications

- Triple layer, high quality, medical grade performance foam
- Base Layer—High density support
  - Protects against collapsing
- Central Layer—High density support
  - Provides support and comfort
- Top layer—Airoform memory medium immersion interface
  - Provides immersion and envelopment



#### Cover Specifications

- Black
- Premium polyurethane coated pressure care material
  - Superior 4 way stretch
  - Anti-shearing, facilitates immersion
  - Vapour breathable
  - Stain resistant/resistant to body fluids
  - Soft touch, flexible and gentle on the skin.
- Fire retardant
- Infection control and hygiene
  - 10,000ppm resistance to chlorine based cleaning agents
  - Inherent anti-microbial protection
  - High frequency welded/fused seams
  - Waterfall ingress protection flat over zipper
- Integrated waterproof zipper



<u>Product Code</u>	<u>Product Description</u>	<u>Dimensions</u>
RMCUB31108	BARIATRIC 3 CORE CUSHION	610X400X90MM
RMCUB31109	BARIATRIC 3 CORE CUSHION	610X460X90MM