

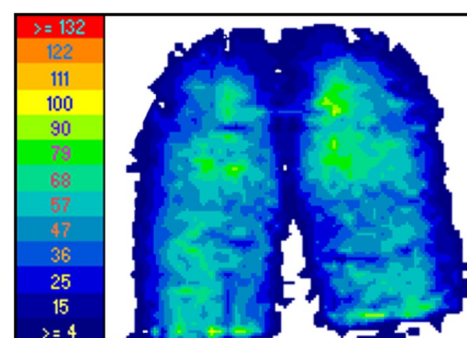
2 Core Cushion

Foam Specifications

- Double layer, high quality, medical grade performance foam
- Base Layer—High density support
 - Protects against collapsing
- Top layer—Airoform memory medium immersion interface
 - Provides immersion and envelopment

Cover Specifications

- Black
- Premium polyurethane coated pressure care material
 - Superior 4 way stretch
 - Anti-shearing, facilitates immersion
 - Vapour breathable
 - Stain resistant/resistant to body fluids
 - Soft touch, flexible and gentle on the skin.
- Fire retardant
- Infection control and hygiene
 - 10,000ppm resistance to chlorine based cleaning agents
 - Inherent anti-microbial protection
 - High frequency welded/fused seams
 - Waterfall ingress protection flat over zipper
- Integrated waterproof zipper



<u>Product Code</u>	<u>Product Description</u>	<u>Dimensions</u>
RMCU31101	2 CORE CUSHION	460X400X70MM
RMCU31102	2 CORE CUSHION	460X460X70MM
RMCU31136	2 CORE CUSHION	510X460X70MM