

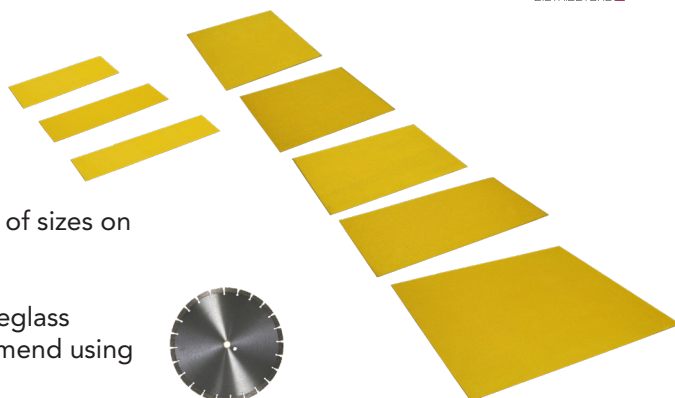
# FIBREGLASS FLOOR GRIT PANEL INSTALLATION GUIDE



## PREPARATION:

1. Clean the area before installing.
2. Measure the area required and find out which Floor Grit Panel size is ideal for your situation. (We supply in a variety of sizes on our website).

If you do require a specific size, you are able to cut the fibreglass panels to a specific size, this can be easily done (we recommend using a diamond blade cutter).



Diamond Blade Cutter

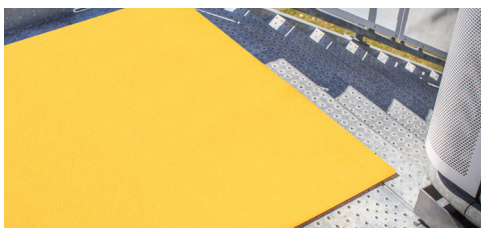
## INSTALLATION:



- 3a. Wooden Surfaces:** Pre-drill & screw into place every 400mm around the edges. Use stainless steel screws outside.



Stainless Steel Screw



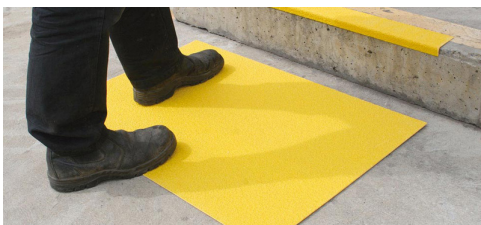
- 3b. Metal Surfaces:** Pre-drill & screw into place every 400mm around the edges. Use stainless steel self-tapping screws to fix the floor panel to the metal surface. Alternatively, you can use the clip & fastener system especially if it is a metal grating surface.



Stainless Steel Self Tapping Screw



Clip & Fastener



- 3c. Concrete Surfaces:** Pre-drill & screw into place every 400mm around the edges (use concrete screws) or glue using Sika SuperGrip Premium Construction Adhesive or Bostik Seal n Flex.



Concrete Screw



Sika SuperGrip Premium Construction Adhesive



Bostik Seal n Flex

