

□ nevada



May or may not come with side
scatters please refer to your pricelist

Model Shown: Nevada 3 str

Fabric: EJP selected fabrics

size	spec	height	width	depth
chair	std	900	1070	900
2 str	std	900	1680	900
2.75 str	std	900	2030	900
3 str	std	900	2250	900

- 15 year warranty
- NZ made

ejp furniture - new zealand

7-9 alfred st, onehunga 1061 po box 13790, onehunga, auckland 1643
t 09 5706670 f 09 5706672
e sales@ejpfurniture.co.nz w www.ejpfurniture.co.nz

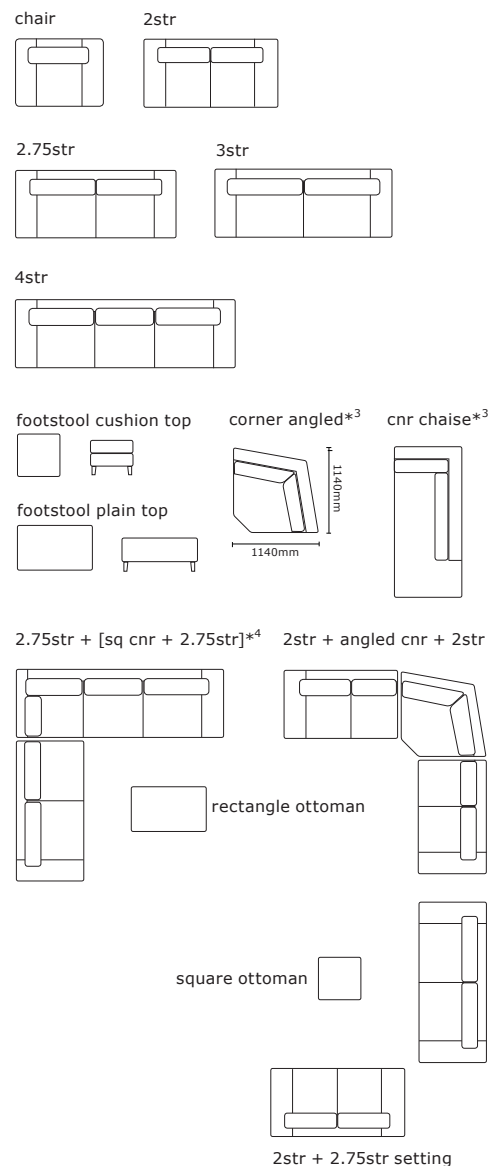
ejp furniture - australia

271 earns law road po box 76, northgate q 4103
t 07 3260 5534 f 07 3260 5538
e sales@evanjohnphilp.com.au w www.ejpfurniture.com.au

nevada



size* ¹	spec	height	width	depth	mtg
chair	std	900	1070	900	
chair	left or right arm	900	850	900	
chair	no arm	900	630	900	
2 str	std	900	1680	900	
2 str	left or right arm	900	1460	900	
2 str	no arm	900	1240	900	
2.5 str	std	n/a			
2.5 str	left or right arm	n/a			
2.5 str	no arm	n/a			
2.75 str	std	900	2030	900	
2.75 str	left or right arm	900	1810	900	
2.75 str	no arm	900	1590	900	
3 str	std	900	2250	900	
3 str	left or right arm	900	2030	900	
3 str	no arm	900	1810	900	
3.5 str	std	n/a			
4 str	std	900	2815	900	
Chaise 2.5	left or right arm	n/a			
Chaise 2.75	left or right arm	900	1025	1560	
Chaise Footbox	left or right side	to match	to match sofa	640	
Corner	square	900	900	900	
Corner	angled	900	1140	1140*	
Corner Chaise	left or right	900	900	2000	
Sofabed	double bi-fold	900	2030	900	
Sofabed	queen bi-fold	900	2250	900	
Footstool sq	plain top	400	570	570	
	cushion top	470	570	570	
Footstool rect	plain top	400	1000	600	
	cushion top	470	1000	600	



notes

- EJP Stage I furniture.
- Made in New Zealand. 15 year warranty on frame, made from NZ kiln dried timber.
- 10 year warranty on seat webbing, 10 year warranty on foam and 2 year warranty on back inners.
- 1 year warranty on sofa bed mechanism. Commercial grade, bi-fold mechanism with a 110-130mm innersprung mattress.
- Fabric, 1 year warranty given on NZ sourced fabric, however all fabrics have passed a 25,000+ rub test.

*1. Due to the nature of foam and fabric all furniture dimensions could be +/- 20mm.

*3. The angled corner is freestanding.

*4. In a square corner setting the corner piece is always 'built on' to the smaller of the two sofas specified, i.e. 2 + cnr + 3, the corner will be built on to the 2 str.

* This style may or may not include side scatters, please refer to your pricelist/promo sheet.

ejp furniture - new zealand

7-9 alfred st, onehunga 1061 po box 13790, onehunga, auckland 1643
 t 09 5706670 f 09 5706672
 e sales@ejpfurniture.co.nz w www.ejpfurniture.co.nz

ejp furniture - australia

271 earnslaw road po box 76, northgate q 4103
 t 07 3260 5534 f 07 3260 5538
 e sales@evanjohphilp.com.au w www.ejpfurniture.com.au