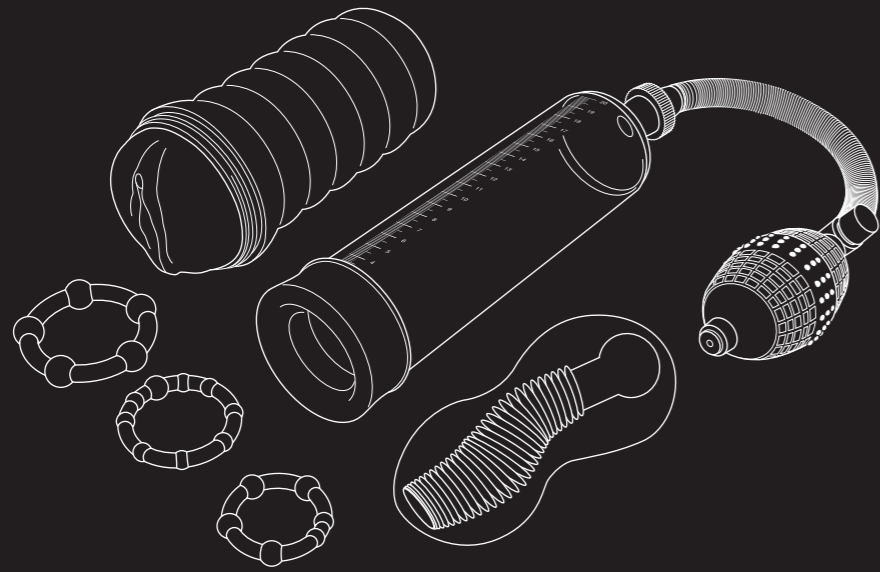


420 mm

297 mm

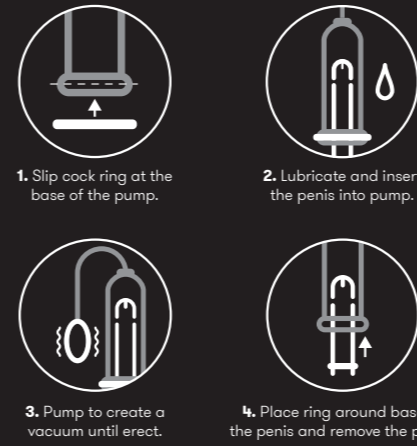
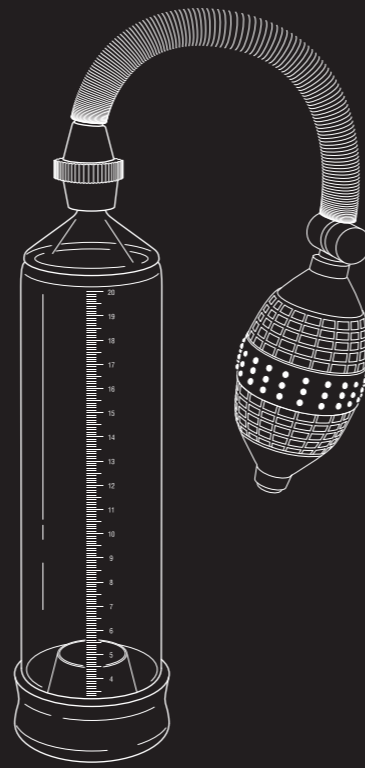
ZOLO™



# 6PC PUMP & PLEASURE SET

MALE SEX TOY SET WITH PENIS PUMP, COCK RINGS AND STROKER

## 1. MANUAL PENIS PUMP

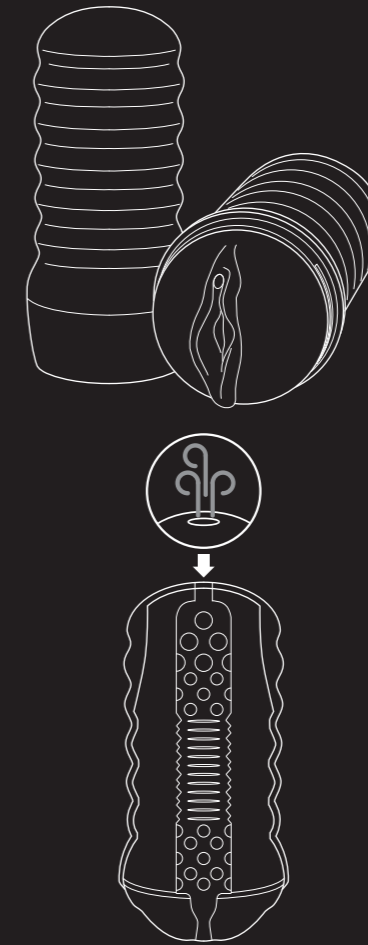


Obtain enhanced sensation and an engorged member by inserting your semi-erect penis into the penis pump chamber. Before you insert, place the cock ring at the base of the pump. Use lubricant to prevent any possible skin irritation.

Squeeze the pump to start removing air from inside the chamber. The change in air pressure will start engorging the blood vessels in penis, increasing its size and sensitivity.

When you're ready to play, remove penis from the chamber and use a penis ring around the base of the penis to maintain your enlarged size.

## 2. DISCREET REALISTIC MASTURBATOR



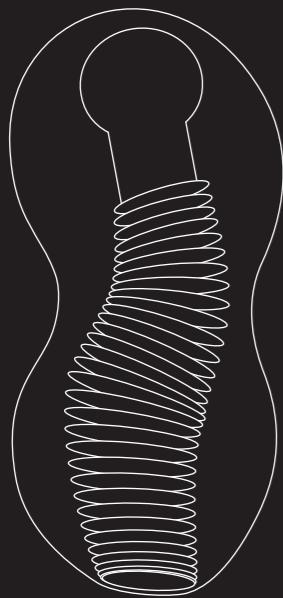
Stroke yourself along a realistic sexual experience that will make you burst with pleasure. Begin by lubricating your member with water-based lubricant.

Grip the outside hard case of the masturbator with your hand and move the device along your penis.

Use long or short strokes to stimulate the penis. Stroke at whichever angle feels the most pleasurable.

The other end of the masturbator features an opening that allows you to control the pressure and suction from the masturbator using your finger.

## 3. SQUEEZABLE TEXTURED CLEAR STROKER



Massage and stroke your penis with orgasmic results with this easy-to-use transparent masturbator.

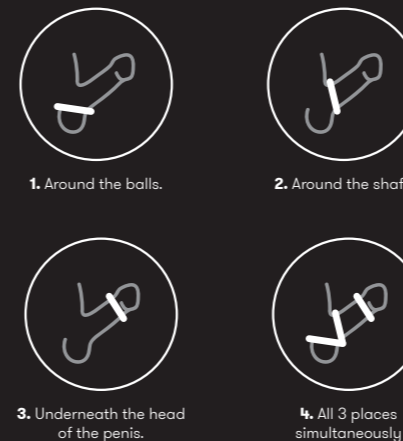
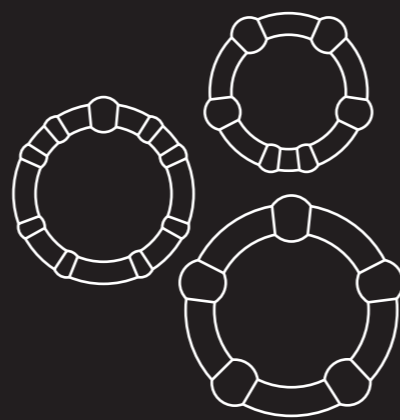
Apply water-based lubricant on your penis and inside the opening of the masturbator.

Slide your penis into the opening of the masturbator and stroke your shaft as fast and as deep as you crave.

Enjoy the realistic feel of textured, ribbed interior of the masturbator.

When play time is over, rinse and clean out the inner canal of the masturbator.

## 4. 3 SIZED ISLAND COCK RINGS



Slip into a comfortable, snug cock ring that wraps around your penis to help you maintain a powerful, pleasurable erection.

First, choose your ideal cock ring fit from the three sizes included. The ring should fit snugly but not so tight that it's uncomfortable. The rings can be worn at the base of the shaft of the penis or around the testicles.

Next, apply lubricant on the inner side of the cock ring to allow it to more easily glide into place.

Place the ring over the head of a flaccid or semi-erect penis and slide it down the shaft.

## CONstriction RINGS

### WARNING!

- Do not fall asleep while wearing the constriction rings. Prolonged use of a ring may lead to permanent penis injury.
- Allow for at least 60 minutes between uses. Frequent usage may increase the risk of penis injury.
- Avoid the usage of constriction rings while under the influence of alcohol or drugs, as this may impair the user's judgement and increase the risk of penis injury.
- Misuse of constriction rings may result in bruising, painful injury, or permanent damage to the penis.
- Constriction rings, in any form or factor, do not prevent the risk of pregnancy.

### PRECAUTIONS

- Limit the use of constriction rings to no more than 30 minutes per session.
- Prolonged use of the constriction rings (without removal from the penis) may cause permanent penis injury.
- Use of constriction rings may aggravate existing medical conditions including Peyronie's disease<sup>1</sup>, priapism<sup>2</sup> and urethral strictures<sup>3</sup>.
- Constriction rings may bruise or rupture blood vessels within the penis or scrotum, resulting in petechiae<sup>4</sup>, hemorrhage<sup>5</sup>, or the formation of hematoma<sup>6</sup>.
- Use the least constrictive silicone ring size that maintains an erection to avoid excessive constriction that may cause penis injury.

- <sup>1</sup> Formation of hardened tissue in the penis that causes pain, distortion during erection
- <sup>2</sup> Painful erections that persist as a result of disease
- <sup>3</sup> An area of hardened tissue that narrows the urethra, making it difficult to urinate at times
- <sup>4</sup> Small purplish spot on body surface caused by a minute hemorrhage
- <sup>5</sup> Flow of blood from ruptured blood vessels
- <sup>6</sup> Localized swelling filled with blood resulting from a break in a blood vessel

420 mm

297 mm

**VACUUM PUMPS**

**WARNING!**

- Cease usage of the vacuum pump if pain occurs.
- Avoid the usage of the vacuum pump while under the influence of alcohol or drugs, as this may impair the user's judgement and increase the risk of penis injury.
- Do not use if the user has sickle cell disease, a history of prolonged erections, or is taking large quantities of aspirin or other blood thinners. These conditions may increase the risk of bruising and hematoma.
- Misuse of the vacuum pump may cause penis injury.

**PRECAUTIONS**

- Apply only the minimum amount of vacuum pressure necessary to achieve an erection. Excessive vacuum pressure may bruise or cause penis injury.
- Use of the vacuum pump may aggravate already existing conditions such as Peyronie's disease<sup>1</sup>, priapism<sup>2</sup> and urethral strictures<sup>3</sup>
- Use of the vacuum pump may bruise or rupture the blood vessels within the penis or scrotum, resulting in petechiae<sup>4</sup>, hemorrhage<sup>5</sup>, or the formation of hematoma<sup>6</sup>.
- If appropriate the labeling should instruct patients not to use an electrically powered vacuum pump or near water.

**CAUTION**

- Avoid over-vigorous pumping.
- This product is intended for the use by a single user.
- The vacuum pump should NOT be used for more than 15 minutes continuously and should not be used within 24 hours of its use.
- Do not fall asleep while using the vacuum pump, or while under the influence of alcohol or drugs. The user needs to be in control of the product at all times.
- Consult a doctor before using the vacuum pump if the user experiences any discomfort in the genital area.
- The user must be in full control of his hands to safely use the device with the strength to push the pressure release button.

**DEVICE PURPOSE**

- The device is an external penile rigidity device using vacuum technology.
- The device is also intended to maintain optimum penis health and sexual stamina, through regular exercise of the penis by erection using a safe level of vacuum pressure.

*The following precautionary measures are advised when using the device.*

**As the device may cause sexual arousal with increased heart and respiratory rates, users should consult their doctors before using the device if they suffer any of the following: heart or lung disease, high blood pressure, stroke, epilepsy or convulsant disorder, uncontrollable diabetes or genital-urinary disorder (kidney, bladder, testicular or penile problems etc). Consult a doctor before use if user consumes anticoagulants or have sickle cell anaemia, bleeding disorders or leukemia.**

**PRECAUTIONS FOR CONstriction RINGS AND VACUUM PUMPS**

**DELAYED DIAGNOSIS OF OTHER CONDITIONS**

If the user has symptoms of erectile dysfunction (i.e. inability to achieve an erection that is sufficient for sexual intercourse) consult a doctor prior to using this device to avoid any potentially harmful delay in diagnosing any of the most common causes of this condition.

**USE WITH IMPAIRED PAIN PERCEPTION**

Do not use the device if the user has decreased sensation of pain in the penis region. This warning should inform the user if he cannot feel pain, he may not know if the device is causing him harm or injury.

**USE WITH DECREASED HAND STRENGTH**

Do not use the device if the user has decreased hand strength as this may make the removal of the device difficult.

PROBLEM	CAUSE	SOLUTION	NOTES
No erection	No vacuum due to air leak from poor seal	- Use more lubricant - Apply firm pressure to body - Trim pubic hair - Check device for air leaks	Problems are most often associated with inexperience from using the device
Partial erection	- Incorrect insert or seal ring size - Inexperience in operating the device	- More practice from using device - Use larger cylinder insert	Problems are most often associated with inexperience in operating the device
Rapid loss of erection (no more than 5 minutes)	- Vacuum loss due to air leak from faulty equipment - Poor seal - Inadequate lubrication - Excessive pubic hair	- Use more lubricant - Apply firm pressure to body - Trim pubic hair - Check device for air leaks - Use smaller cylinder insert - Use smaller or double tension rings - Remove tension band carefully	- Problems are most often associated with inexperience from using the device - Consult a physician if problem occurs
Pulling of the skin of the scrotum	Insufficient tension from bands or rings	- Remove lubricant from scrotum - Angle the device downwards when in use	- Problems are most often associated with inexperience from using the device
Experiencing any discomfort or pain while device is in use	- Too rapid pumping - pulling of scrotal tissue	- Slower pumping - Continue to use device	- Problems are most often associated with inexperience from using the device - Consult a physician if problem occurs
Having redness, irritation or bruising	- Too rapid pumping - Over pumping	- Slower pumping - Fewer pumps	- Problems are most often associated with inexperience from using the device - Consult a physician if problem occurs
Feeling a cold penis (to you and your partner)	- Constriction of blood flow to the penis - Lubrication	- Wash off lubricant or warm lubricant before use	-
Penis pivots on its base	- Constriction of blood flow to the penis	- If manageable, apply the device after you have a partial erection	-

**CONTENTS:**

- MANUAL PENIS PUMP
- DISCREET REALISTIC MASTURBATOR
- SQUEEZABLE TEXTURED CLEAR STROKER
- 3 SIZED ISLAND COCK RINGS

**SOLD AS A NOVELTY ONLY**

[WWW.ZOLOCUP.COM](http://WWW.ZOLOCUP.COM)

**UK Responsible Person:**

ArangaRanga UK LTD, 20-22 Wenlock Road, London, N17 6UJ, UK.  
Phone: +44 2037692960, E-Mail: UKresponsibleperson@arangeranga.com

**EU Responsible Person:**

ArangaRanga SL, Paseo de la Castellana 194, Madrid, 28046, Spain.  
Phone: +34910054258, E-Mail: EUresponsibleperson@arangeranga.com

**Distributed by XGEN, LLC**  
**Horsham, PA 19044**

**MADE IN CHINA**

