



## The interior

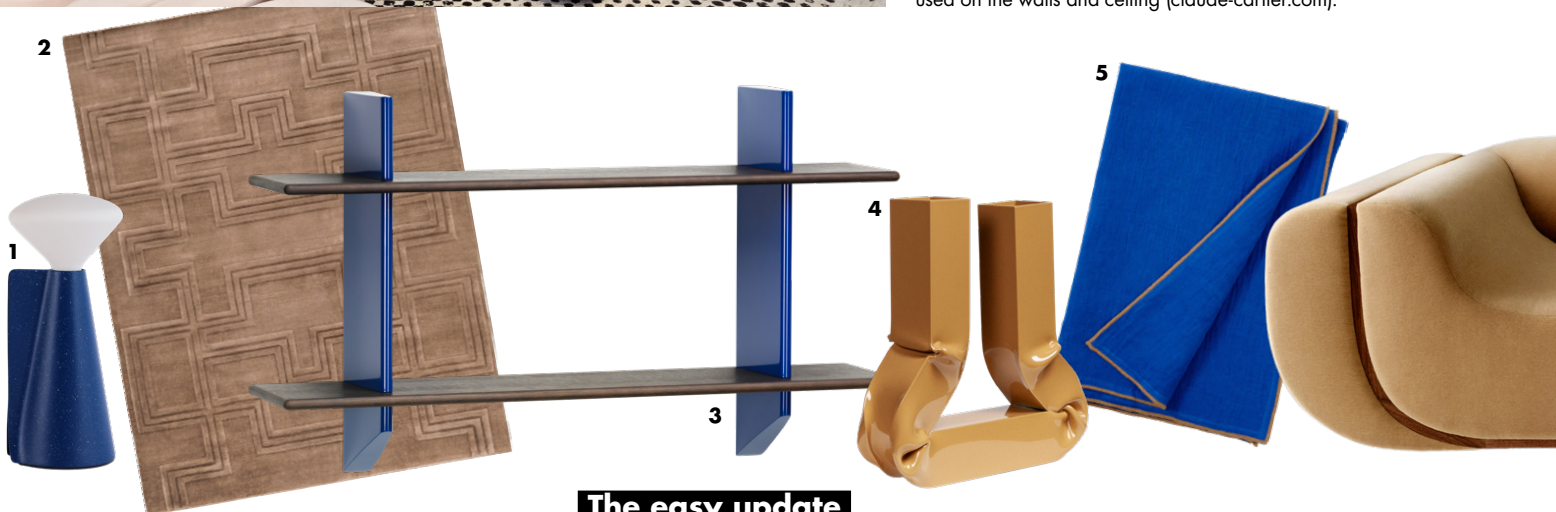
Tempted to replicate Douglas House's on-trend colour combination in your own home? The trick is to ensure you get the right balance – these are two strong shades that require a careful touch. If painting a whole wall in either blue or caramelly camel is too big a commitment for you, consider a door or cabinetry picked out in one of the hues. Wallpapers and artworks where the colour combining has been done for you are also a good start. Alternatively, use furniture and lighting to make this palette work for you – both hues are ones strongly in favour with designers at the moment, so the choice is vast.



**1** This bespoke wallpaper by Patricia Urquiola was spotted in one of Cassina's exhibition spaces behind the brand's 'Ghost Wall' storage system, and highlights how blue and tan hues can work together in a dynamic pattern. The 'Etoffe' wallpaper by Caselio offers an abstract approach to this palette that is a good alternative to Cassina's custom design ([cassina.com](http://cassina.com)).

**2** Sometimes a colour scheme should be led by a statement piece of furniture. Here, that is Christophe Delcourt's 'Clara' bed (from approx £8,083) by Italian furniture brand Baxter. Upholstered in 'Camel' nubuck leather, it serves as a direct counterpoint to the brilliant-blue headboard behind while also complementing the tan tones in the room ([baxter.it](http://baxter.it)).

**3** Claude Cartier's Lyon apartment/showroom is regularly redesigned and has been known to act as a barometer for decorating trends. Its latest iteration sees bold and softer shades of blue used alongside a caramel brown – proof, if more were needed, that this is a look with legs. The use of paint here is inspiringly playful, with architectural details and the radiator picked out in one hue, while another is used on the walls and ceiling ([claud-cartier.com](http://claud-cartier.com)).



## The easy update

- 1** 'Mantle' portable lamp in 'Cobalt Blue', £165, Tala ([tala.co.uk](http://tala.co.uk)) **2** 'Tela' rug in 'Cognac', £1,206 per sq m, Woven Place ([wovenplace.com](http://wovenplace.com))  
**3** 'Rayonnage Mural' shelving by Jean Prouvé, £1,350, Vitra ([vitra.com](http://vitra.com)) **4** 'Vasi' vase in 'Caramel', £149, AOT Studio ([aotstudio.com](http://aotstudio.com))  
**5** 'Evy' linen blanket in 'Cobalt', approx £87, Brita ([britasweden.se](http://britasweden.se))

**4** Artist Stephen Ormandy's large geometric painting can be seen from all the rooms in this Melbourne house, designed by Julia Cox. The artwork, with its calming blues and pop of toffee brown, provided the Australian interior designer with the starting point for the project, inspiring her to search out furniture that complemented its palette ([jchq.com.au](http://jchq.com.au)).

**5** Want to take a more textural approach to the scheme? Try harder materials – tiles and timbers – that translate the shades into a more architectural slant. In this open-plan extension by Kennedy Nolan, blues and browns take an earthy tonal turn thanks to terracotta-tiled walls and wooden cabinetry that features geometric decoration ([kennedynolan.com.au](http://kennedynolan.com.au)).

**6** As colour drenching's popularity has continued, painting doors has become commonplace, but whoever said that you need to stick to one hue? The double doors leading into this living room are ochre on one side (to match the lounge's walls and ceiling), but feature a pale blue (Pure & Original's 'Soft Greek', £72 for one litre) on the reverse. Open the doors for a glimpse of this dream pairing ([pure-original.com](http://pure-original.com)).



PICTURES: FRANCESCO DOIFO, GUILLAUME GRASSEY/LIVING INSIDE, DEREK SWALWELL, SEAN FENNESSY, MARGARET DE LANGE



**6** 'Linea' sofa by Estudio Persona, £15,502, Objects With Narratives ([objectswithnarratives.com](http://objectswithnarratives.com)) **7** 'MVS' cutlery set by Muller Van Severen, £49 for a set of four, Hay ([hay.dk](http://hay.dk)) **8** 'Me' table lamp in 'Cobalt Wave', £310, Hannah Simpson Studio ([hannahsimpsonstudio.com](http://hannahsimpsonstudio.com)) **9** 'Crumble de Verre' mirror by Riccardo Cenedella, £5,400, Monologue ([monologuelondon.com](http://monologuelondon.com)) **10** 'Clotilde' leather chair by Roberto Lazzeroni, from approx £3,473, Baxter ([baxter.it](http://baxter.it)) **ED**