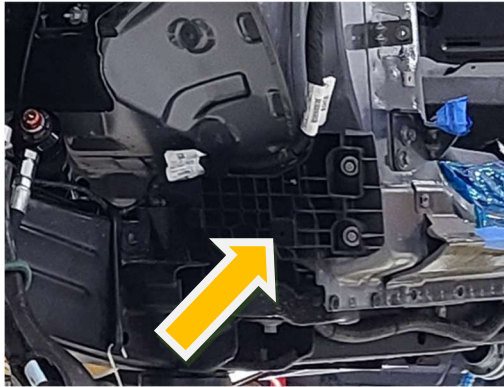


## FRONT FENDER INSTALL INSTRUCTIONS

1. The following OEM parts will need to be removed before installing the FHOR fenders:
  - a. Radiator grille
  - b. Front bumper cover
  - c. Front bumper cover mounting bracket
  - d. Fender splash shield
  - e. Fender molding
  - f. Trail Sight front accessory mounts
  - g. Fender filler panel

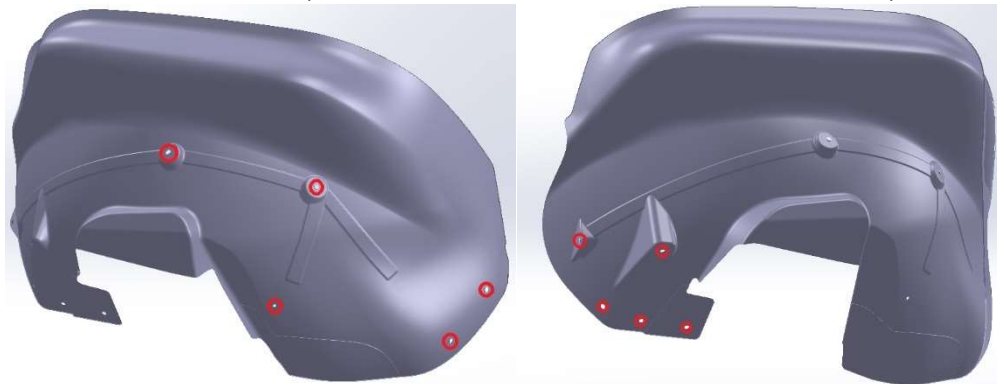
2. Remove front fenders

- a. Remove wire guides from back, lower corners of the fender wells



b.

3. **IF FHOR FENDER LINERS ARE BEING USED:** Drill the 10 holes in each front fender marked below with a 3/8" drill bit. Hole position should be indicated with a recessed pocket.



- a. Install fender liners to check for fit using the factory hardware. Enlarge holes as necessary.
4. Place and align FHOR front fenders to determine mounting hole location, then mark those locations
  - a. Ensure proper clearance to other body panels and moving parts
  - b. **IF FHOR FENDER LINERS ARE BEING USED:** Ensure fender liners are tucked behind the lip of the fenders. Mark 6 holes along the fender where the fender and fender liner overlap. Drill through both the fender and fender liner with a 1/4" drill bit.

5. Remove fenders and drill mounting holes. Start at 5/16" and enlarge if needed.
  - a. **IF FHOOR FENDER LINERS ARE BEING USED:** Enlarge the 1/4" holes in the fender liner (where it meets the fender) to 15/32" and install rivet nuts
6. Remount factory door well fender trim to new fenders
7. Mount fenders to vehicle and align before tightening
  - a. **IF FHOOR FENDER LINERS ARE BEING USED:** Ensure fender liners are tucked behind the lip of the fenders. Fasten fenders to fender liners using supplier M6 screws
8. Mount front lower valence mounting bracket, lower valence, and upper grill to check fitment and adjust if necessary
9. Sand/fill/shape fenders to match vehicle
10. Remove parts from vehicle, prime and paint
11. Re-install all parts, final tighten all hardware, and re-install all clips

--- Next Step On Following Page ---

## QUARTER PANEL INSTALL INSTRUCTIONS

The following OEM parts will need to be removed before installing the FHOR quarter panels (2-Door and 4-Door)

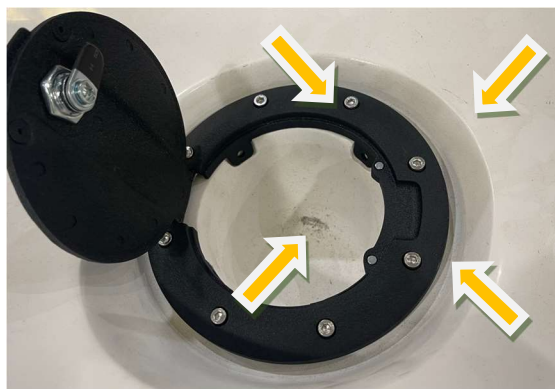
- a. Vehicle top
  - b. Tailgate opening fender trim
  - c. Rear fender trim
  - d. Fender splash shield
2. Remove OEM rear fenders
  3. **IF FHOR FENDER LINERS ARE BEING USED:**
    - a. Sheet metal will need to be trimmed and rolled for clearance (example below). If not using fender liners, sheet metal may still need to be trimmed and rolled depending on tire clearance.



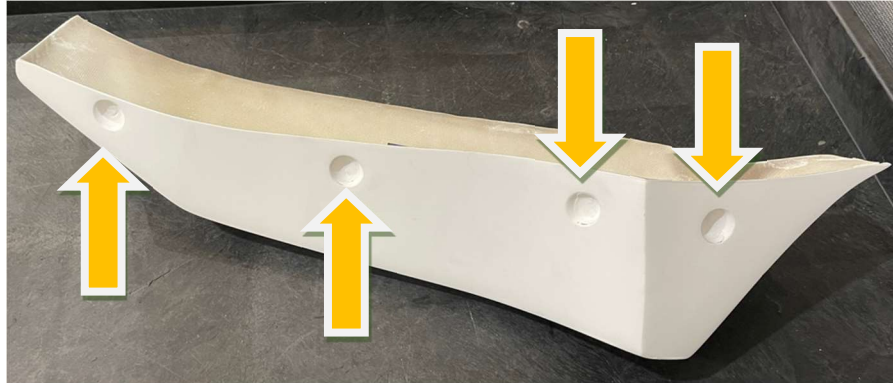
- b. If not using fender liners, sheet metal may need to be trimmed and rolled depending on tire clearance
- c. Drill the 4 holes in each front fender marked below with a 3/8" drill bit. Hole position should be indicated with a recessed pocket.



- d. Install fender liners to check for fit using the factory hardware. Enlarge holes as necessary.
- 4. Place and align FHOR fenders to determine mounting hole location, then mark those locations
  - a. Ensure proper clearance to other body panels and moving parts
  - a. **IF FHOR FENDER LINERS ARE BEING USED:** Ensure fender liners are tucked behind the lip of the fenders. Mark 4 holes along the fender where the fender and fender liner overlap. Drill through both the fender and fender liner with a ¼" drill bit.
- 5. Remove fenders and drill mounting holes. Start at 5/16" and enlarge if needed.
  - a. **IF FHOR FENDER LINERS ARE BEING USED:** Enlarge the ¼" holes in the fender liner (where it meets the fender) to 15/32" and install rivet nuts
- 6. Fuel door
  - a. Place fuel door on drivers side quarter panel and mark mounting holes on tabs protruding into pockets of quarter panel. Door will swing towards the front of the vehicle.



- b. Drill (4) 7/64" holes
- c. Using a 3 ½" hole saw, cut out the bottom of the fuel fill pocket. Cut from the fuel door side towards the back side of the fender.
- d. Install fuel door to confirm fitment, and then remove for paint/body work
- 7. Mount fenders to vehicle and align before tightening
  - a. **SEE PAGE 7 AND BEYOND FOR FURTHER DETAILS**
  - b. Confirm clearance to fuel neck/cap, additional trimming may be necessary.
  - c. **IF FHOR FENDER LINERS ARE BEING USED:** Ensure fender liners are tucked behind the lip of the fenders. Fasten fenders to fender liners using supplier M6 screws
- 8. Rear door caps (4 door only)
  - a. Paint the inner skin before installation. It will be riveted in place and won't be removable after the initial fit up and will be visible when the door is open. We recommend either black or body color.
  - b. Drill (4) ¼" holes in the outer skin centered in the indentations



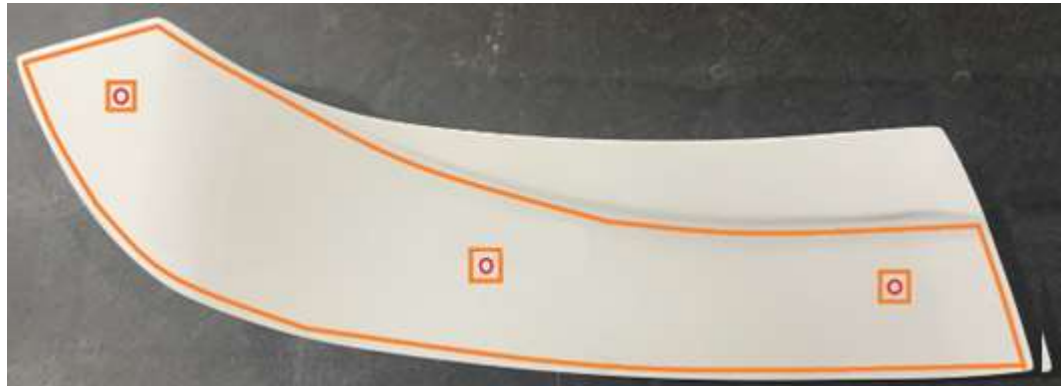
- c. Drill (4) 15/32" holes in the inner skin centered in the indentations and install supplied M6 rivet nuts



- d. Drill (4) 3/16" holes in the inner skin in approximately the locations circled in red below



- e. Prep inner door skin and apply supplied adhesive tape around the outside of the surface where it mates with the door. Also apply adhesive tape covering the holes previously drilled. Orange lines below show the locations to apply the tape.



- f. Fasten the inner and outer skins together with the M6 screws
  - g. Prep door surface for adhesive
  - h. With the rear door closed, align the door cap assembly with the quarter panel body lines as well as possible
  - i. Once aligned, firmly press to door to secure with previously applied adhesive tape
  - j. Remove outer cap skin by removing M6 screws
  - k. **\*ENSURE WINDOWS ARE ROLLED UP BEFORE PROCEEDING WITH THIS STEP!\***  
Drill (3) 3/16" holes into the door through the already drilled holes in the inner skin that are covered in adhesive tape.
    - i. Be very careful not to over penetrate when drilling into the door.
  - l. Rivet inner skin to door with supplied rivets
  - m. Reinstall outer cap skin
9. Sand/fill/shape fenders and door caps to match vehicle
  10. Remove FHOR parts from vehicle, prime and paint
  11. Re-install all parts, tighten all hardware to final spec, and re-install all clips

4

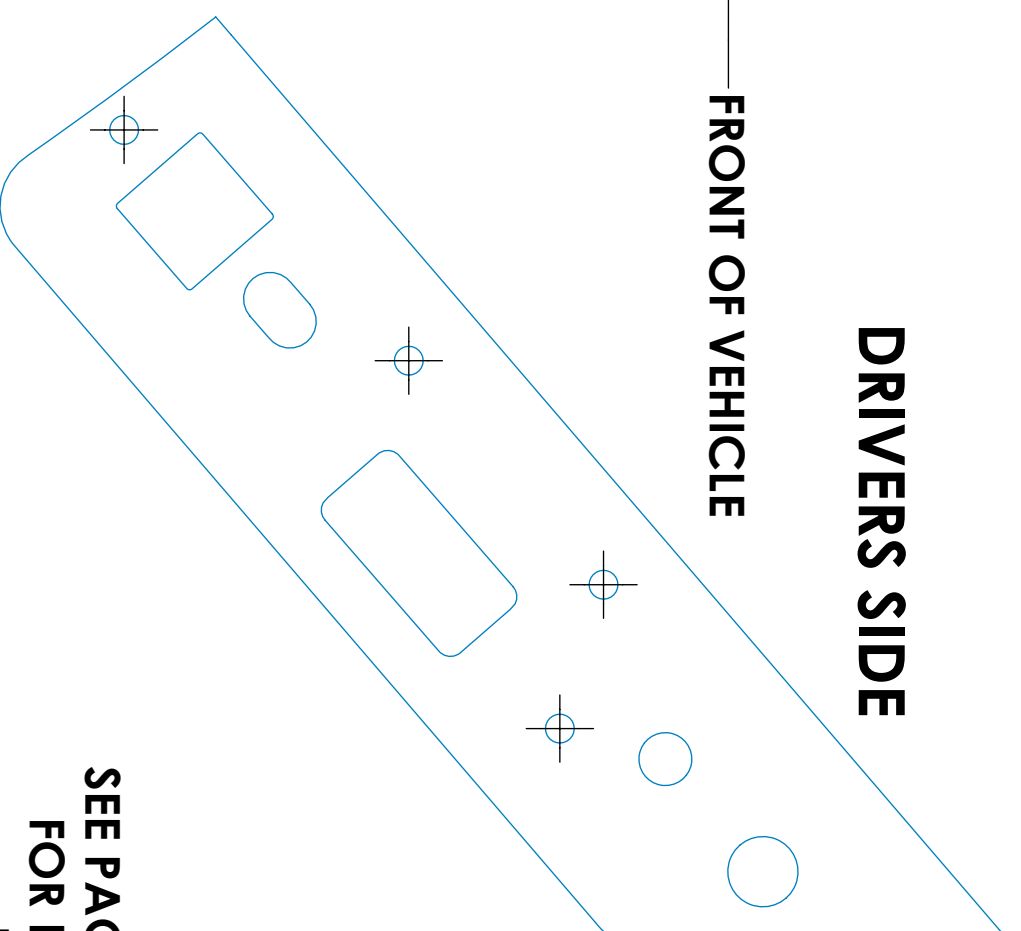
3

2

1

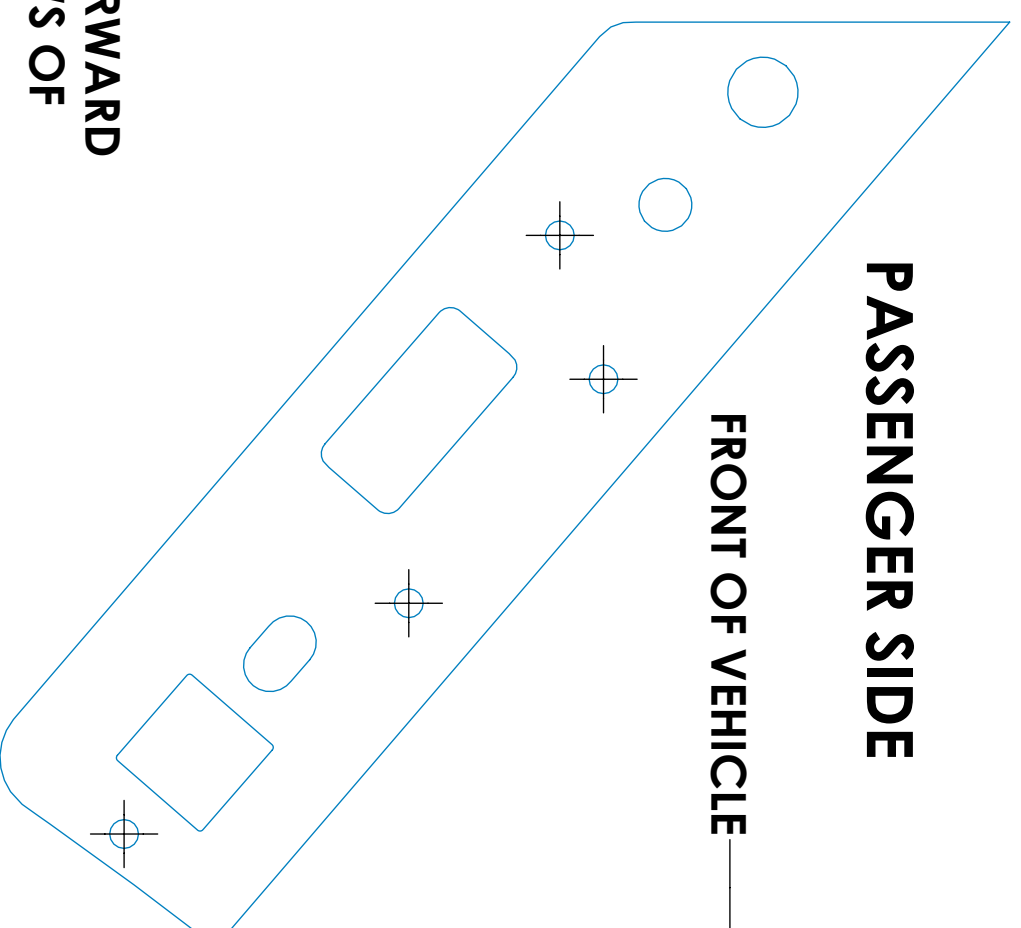
## DRIVERS SIDE

FRONT OF VEHICLE →



## PASSENGER SIDE

FRONT OF VEHICLE →



**SEE PAGES 2 AND FORWARD  
FOR DETAILED VEIWS OF  
INSTRUCTIONS**

### INSTRUCTIONS:

1. PRINT THIS PAGE AT 100% SCALE ON PLAIN WHITE PRINTER PAPER.
2. CAREFULLY CUT OUT THE SHAPES ABOVE ALONG THEIR PERIMETERS.
3. LAY THE TEMPLATE ON TO THE BRACKETS THAT ARE MOLDED INTO THE REAR QUARTER PANELS, BEING CAREFUL TO GET IT WELL ALIGNED.
4. CENTER PUNCH THROUGH THE PAPER ONTO THE MOLDED IN BRACKET AT THE FOUR INDICATED LOCATIONS (CROSSHAIRS).
5. USING THE CENTER PUNCHES AS A GUIDE, DRILL FOUR  $\phi 0.125$  -  $\phi 0.150$  HOLES THROUGH THE MOLDED IN BRACKET.
6. INSTALL THE SUPPLIED SECONDARY BRACKET TO THE VEHICLE WITH THE TWO BOLT HOLES AT THE BOTTOM.
7. INSTALL THE QUARTER PANEL THE THE VEHICLE, WITH THE BRACKET MOLDED TO THE FENDER ON TOP OF THE PREVIOUSLY ISNTALLED SECONDARY BRACKET.
8. ALIGN THE QUARTER PANEL TO THE VEHICLE AS DESIRED.
9. ONCE ALIGNED, SECURE THE SECONDARY BRACKET TO THE QUARTER PANEL WITH THE SUPPLIED RIVETS.
10. TRIM OEM BUMPER TRIM BRACKET AS SHOWN.
11. REINSTALL TRIMMED OEM BUMPER TRIM BRACKET WITH OEM HARDWARE.
12. TRIM OEM BUMPER TRIM AS SHOWN.
13. REINSTALL BUMPER TRIM.
14. REPEAT FOR THE OTHER SIDE OF THE VEHICLE.

A

A

B

B

4

3

2

1

UNLESS OTHERWISE SPECIFIED:

DIMENSIONS ARE IN INCHES  
TOLERANCES:  
TWO PLACE DECIMAL = NA  
THREE PLACE DECIMAL = NA  
DEGREES = NA°  
3D PROFILE TO MODEL = NA  
INTERPRET GEOMETRIC TOLERANCING  
PER: ASME Y14.5M-1994

USED ON:  
-21 + BRONCO

MATERIAL

FINISH

NA

DO NOT SCALE DRAWING

NAME DATE

DRAWN MCW 10/24/23

ENG APPR. MCW 10/24/23

**FUN-HAVER OFFROAD**

4403 Stough Rd  
Concord, NC 28027  
www.funvehicles.com

COMMENTS: FOR ALL NON-DIMENSIONED FEATURES,  
PARTS MUST ADHERE TO 3D PROFILE TOLERANCE

TITLE:

**FHOR RQP BRACKET  
INSTALL GUIDE**

SIZE DWG. NO.

**B** NA

REV  
**A**

SCALE: 1:1

SHEET 1 OF 9



4

3

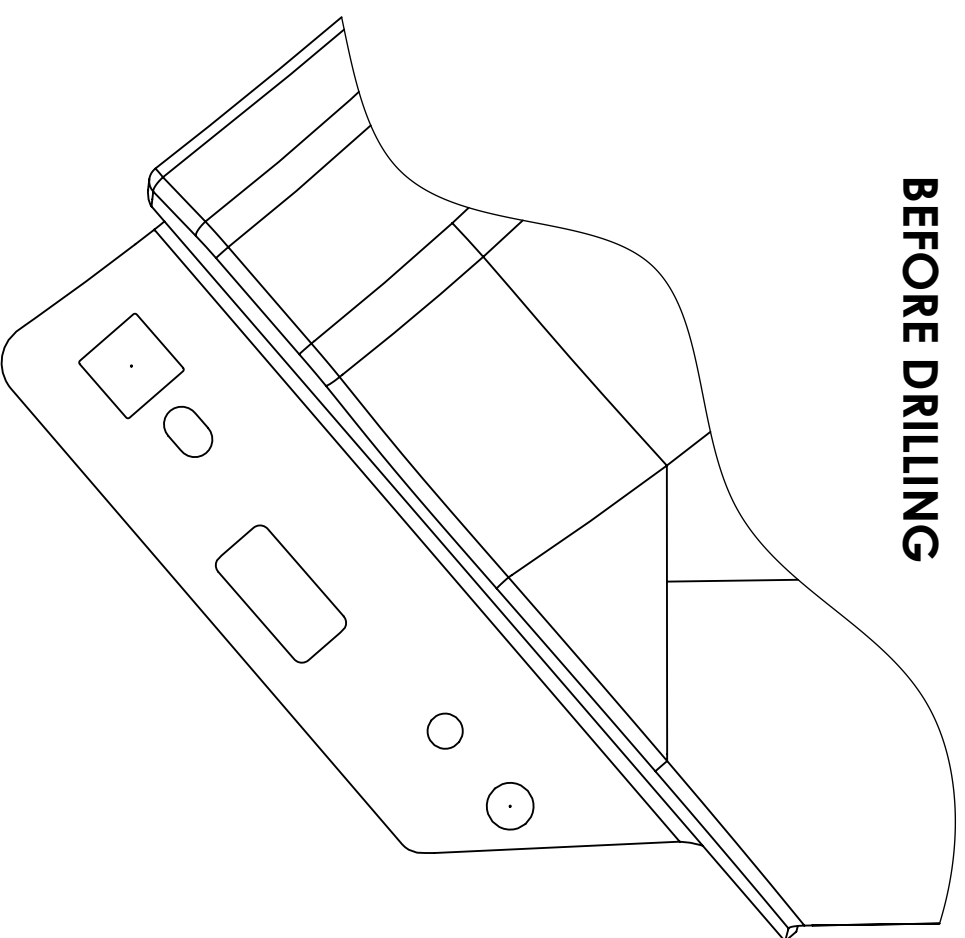
2

1

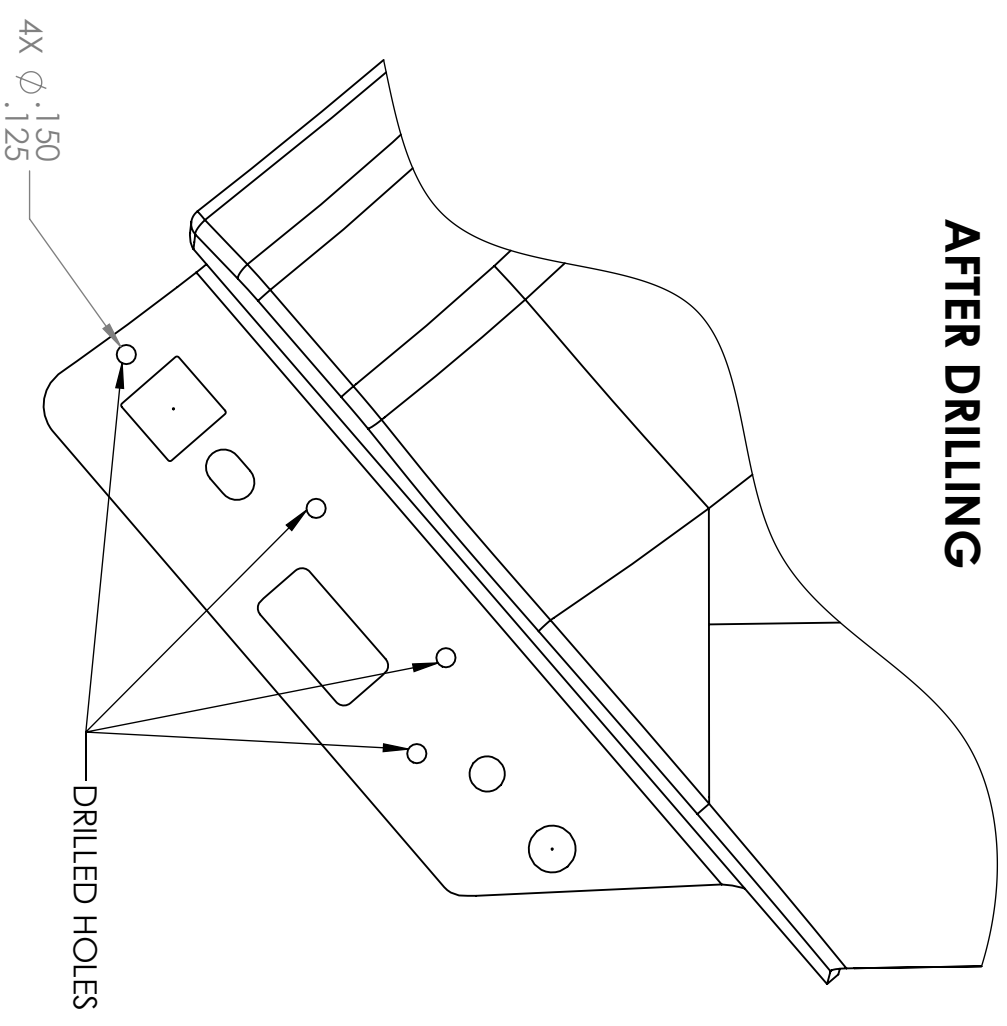
# STEPS 1-5

FOLLOW STEPS ON PAGE 1 TO DRILL 4X HOLES TO MOUNT SECONDARY BRACKETS.

**BEFORE DRILLING**



**AFTER DRILLING**



A

B

A

B

4

3

2

1

UNLESS OTHERWISE SPECIFIED:  
DIMENSIONS ARE IN INCHES  
TOLERANCES:  
TWO PLACE DECIMAL = NA  
THREE PLACE DECIMAL = NA  
DEGREES = NA°  
3D PROFILE TO MODEL = NA  
INTERPRET GEOMETRIC TOLERANCING PER: ASME Y14.5M-1994

NAME	MCW	DATE	10/24/23
DRAWN	MCW	ENG APPR.	MCW
USED ON: -21 + BRONCO			
MATERIAL NA			
FINISH NA			
DO NOT SCALE DRAWING			

PROPERTY AND CONFIDENTIAL  
THE INFORMATION CONTAINED IN THIS  
DRAWING IS THE SOLE PROPERTY OF  
FUN-HAVER OFFROAD.  
ANY REPRODUCTION IN PART OR AS A  
WHOLE WITHOUT THE WRITTEN PERMISSION  
OF RTR VEHICLES IS PROHIBITED.

4403 Stough Rd  
Concord, NC 28027  
www.rtrvehicles.com

**FUN-HAVER OFFROAD**

**FHOR RQP BRACKET  
INSTALL GUIDE**

COMMENTS: FOR ALL NON-DIMENSIONED FEATURES,  
PARTS MUST ADHERE TO 3D PROFILE TOLERANCE

TITLE:

SIZE DWG. NO.

**B** NA

SCALE: 1:4

REV **A**

SHEET 2 OF 9





4

3

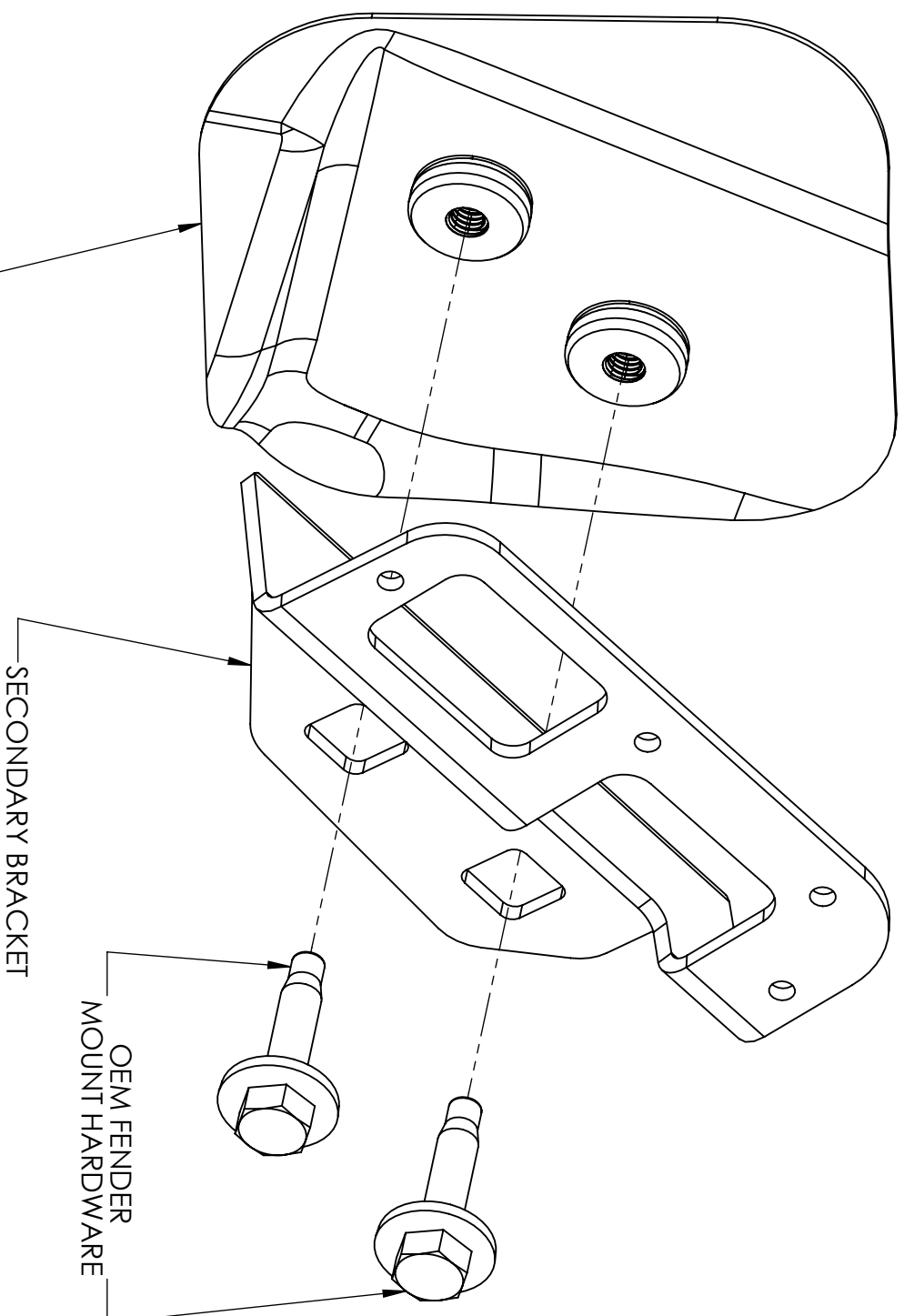
2

1

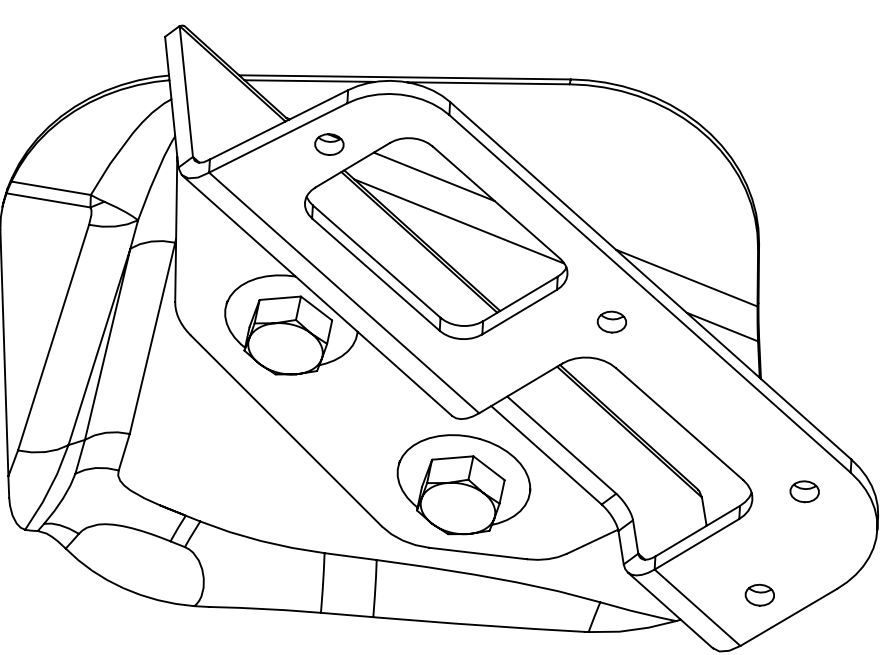
# STEP 6

INSTALL THE SUPPLIED SECONDARY BRACKET TO THE VEHICLE WITH THE TWO BOLT HOLES AT THE BOTTOM.

**EXPLODED VIEW**



**COMPLETE**



OEM BODY STRUCTURE

SECONDARY BRACKET

OEM FENDER MOUNT HARDWARE

UNLESS OTHERWISE SPECIFIED:  
 DIMENSIONS ARE IN INCHES  
 TOLERANCES:  
 TWO PLACE DECIMAL = NA  
 THREE PLACE DECIMAL = NA  
 DEGREES = NA°  
 3D PROFILE TO MODEL = NA  
 INTERPRET GEOMETRIC TOLERANCING PER: ASME Y14.5M-1994

USED ON:  
 -21 + BRONCO

MATERIAL: NA  
 FINISH: NA  
 DO NOT SCALE DRAWING

NAME	DATE
MCW	10/24/23
MCW	10/24/23

ENG APPR. MCW

**FUN-HAVER OFFROAD**  
 4403 Stough Rd  
 Concord, NC 28027  
 www.funvehicles.com

**PROPRIETARY AND CONFIDENTIAL**  
 THE INFORMATION CONTAINED IN THIS DRAWING IS THE SOLE PROPERTY OF FUN-HAVER OFFROAD. ANY REPRODUCTION IN PART OR AS A WHOLE WITHOUT THE WRITTEN PERMISSION OF FHO VEHICLES IS PROHIBITED.

COMMENTS: FOR ALL NON-DIMENSIONED FEATURES, PARTS MUST ADHERE TO 3D PROFILE TOLERANCE

TITLE:  
**FHOR ROP BRACKET  
 INSTALL GUIDE**

SIZE	DWG. NO.	REV
B	NA	A
SCALE: 1:4		SHEET 3 OF 9

B

B

A

A

4

3

2

1

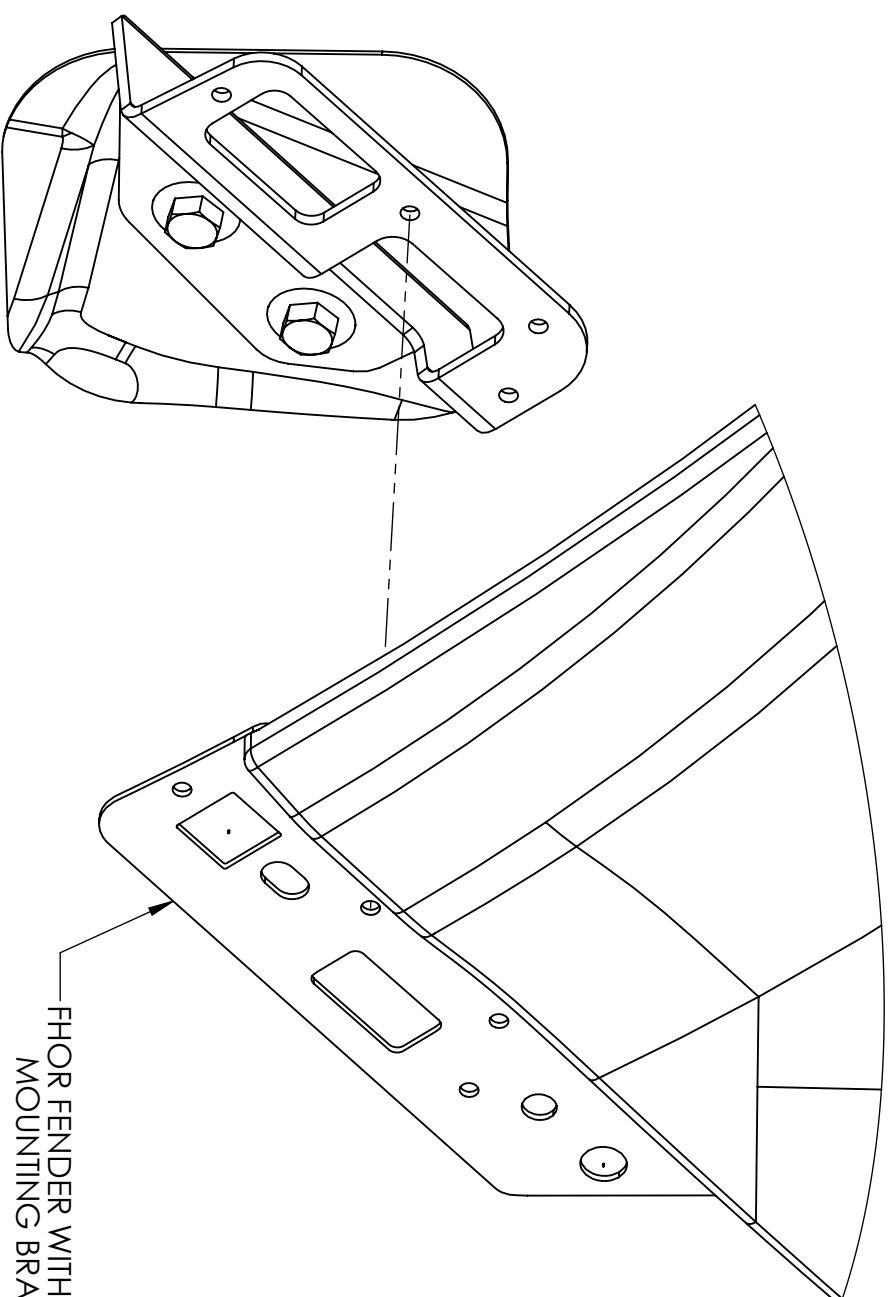


# STEP 7

INSTALL THE QUARTER PANEL THE THE VEHICLE, WITH THE BRACKET MOLDED TO THE FENDER ON TOP OF THE PREVIOUSLY INSTALLED SECONDARY BRACKET.

**B**

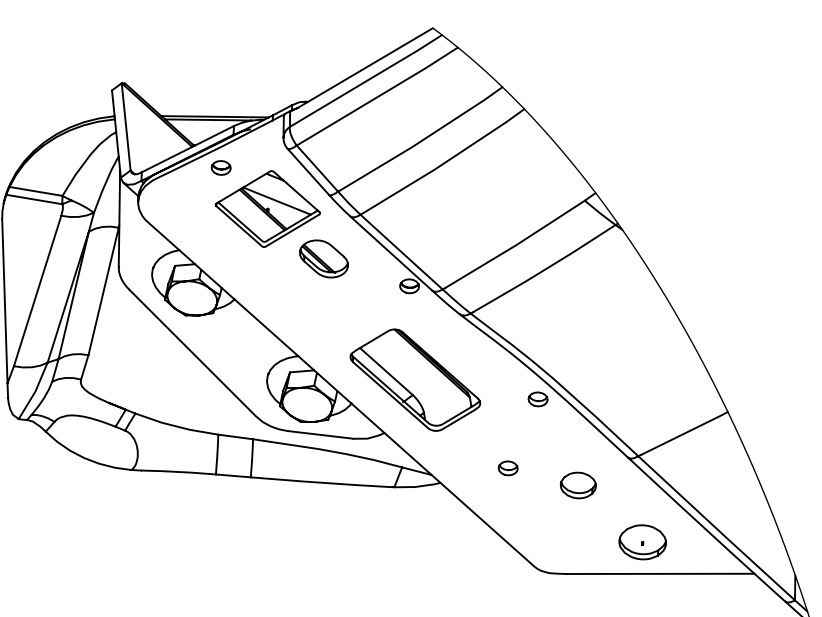
**EXPLODED VIEW**



FHOR FENDER WITH DRILLED  
MOUNTING BRACKET

**B**

**COMPLETE**



A

A

UNLESS OTHERWISE SPECIFIED:

DIMENSIONS ARE IN INCHES  
TOLERANCES:  
TWO PLACE DECIMAL = NA  
THREE PLACE DECIMAL = NA  
DEGREES = NA°  
3D PROFILE TO MODEL = NA  
INTERPRET GEOMETRIC TOLERANCING  
PER: ASME Y14.5M-1994

USED ON:  
-21 + BRONCO

MATERIAL

NA

FINISH

NA

DO NOT SCALE DRAWING

NAME DATE  
MCW 10/24/23

DRAWN  
MCW

ENG APPR. MCW 10/24/23

**FUN-HAVER OFFROAD**  
4403 Stough Rd  
Concord, NC 28027  
www.fthvehicles.com

**PROPRIETARY AND CONFIDENTIAL**  
THE INFORMATION CONTAINED IN THIS  
DRAWING IS THE SOLE PROPERTY OF  
FUN-HAVER OFFROAD.  
ANY REPRODUCTION IN PART OR AS A  
WHOLE WITHOUT THE WRITTEN PERMISSION  
OF FTR VEHICLES IS PROHIBITED.

COMMENTS: FOR ALL NON-DIMENSIONED FEATURES,  
PARTS MUST ADHERE TO 3D PROFILE TOLERANCE

TITLE:  
**FHOR RQP BRACKET  
INSTALL GUIDE**

SIZE DWG. NO. REV

**B** NA A

SCALE: 1:4 SHEET 4 OF 9

SCALE: 1:4 SHEET 4 OF 9

SCALE: 1:4 SHEET 4 OF 9

SCALE: 1:4 SHEET 4 OF 9

SCALE: 1:4 SHEET 4 OF 9

4

3

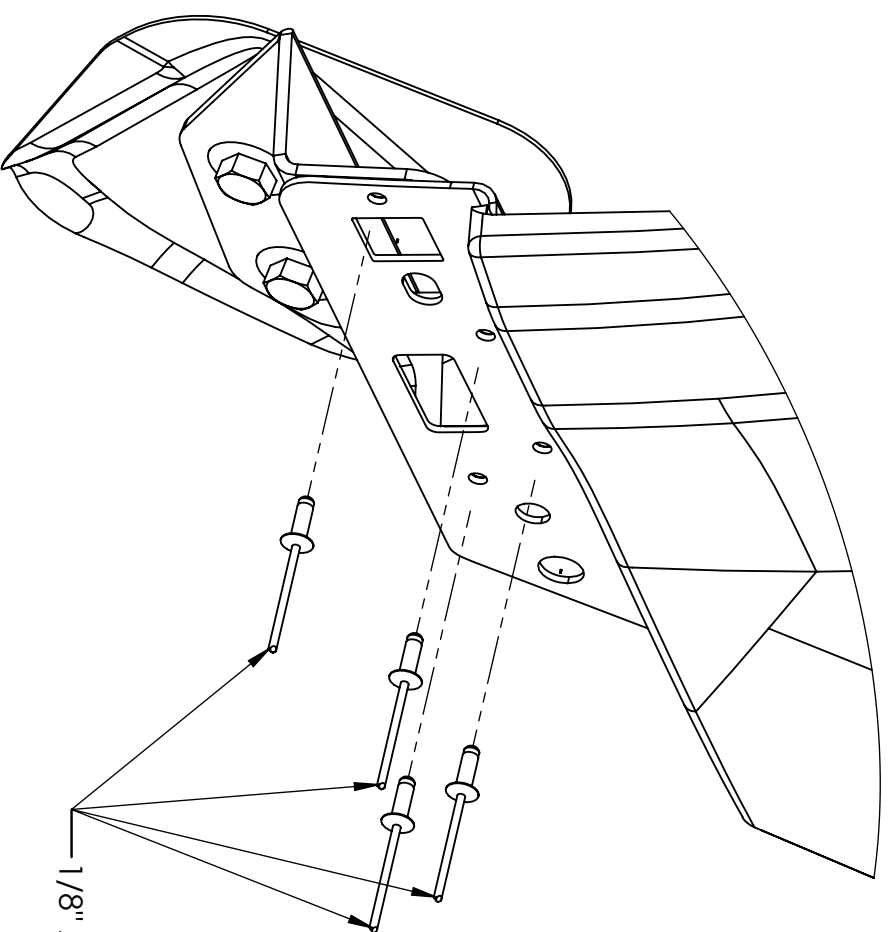
2

1

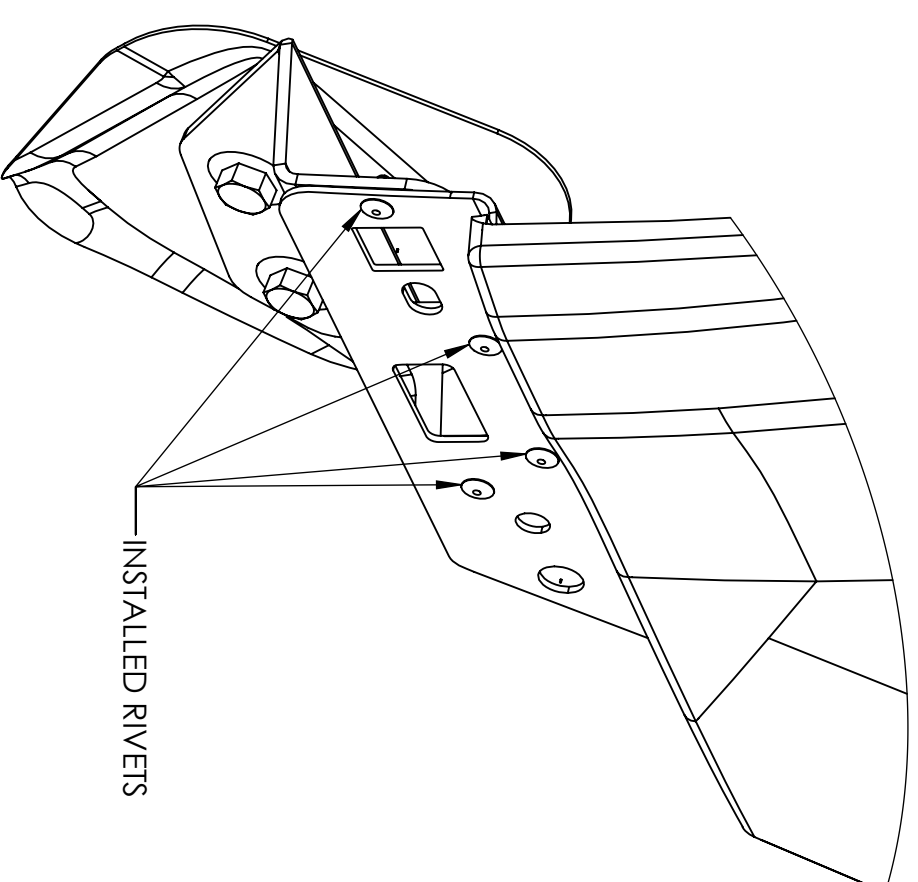
ONCE ALIGNED, SECURE THE SECONDARY BRACKET TO THE QUARTER PANEL WITH THE SUPPLIED RIVETS.

# STEP 9

## EXPLODED VIEW



## COMPLETE



A

B

A

B

4

3

2

1

UNLESS OTHERWISE SPECIFIED:

DIMENSIONS ARE IN INCHES  
 TOLERANCES:  
 TWO PLACE DECIMAL = NA  
 THREE PLACE DECIMAL = NA  
 DEGREES = NA°  
 3D PROFILE TO MODEL = NA  
 INTERPRET GEOMETRIC TOLERANCING PER: ASME Y14.5M-1994

USED ON: 21 + BRONCO

MATERIAL: NA

FINISH: NA

DO NOT SCALE DRAWING

NAME	DATE
MCW	10/24/23
MCW	10/24/23

ENG APPR. MCW

**FUN-HAVER OFFROAD**

4403 Stough Rd  
 Concord, NC 28027  
 www.fhvehicles.com

COMMENTS: FOR ALL NON-DIMENSIONED FEATURES, PARTS MUST ADHERE TO 3D PROFILE TOLERANCE

TITLE:  
**FHOR ROP BRACKET  
 INSTALL GUIDE**

SIZE DWG. NO. REV  
**B** NA A

SCALE: 1:4 SHEET 5 OF 9



**PROPRIETARY AND CONFIDENTIAL**  
 THE INFORMATION CONTAINED IN THIS DRAWING IS THE SOLE PROPERTY OF FUN-HAVER OFFROAD.  
 ANY REPRODUCTION IN PART OR AS A WHOLE WITHOUT THE WRITTEN PERMISSION OF FHR VEHICLES IS PROHIBITED.

4

3

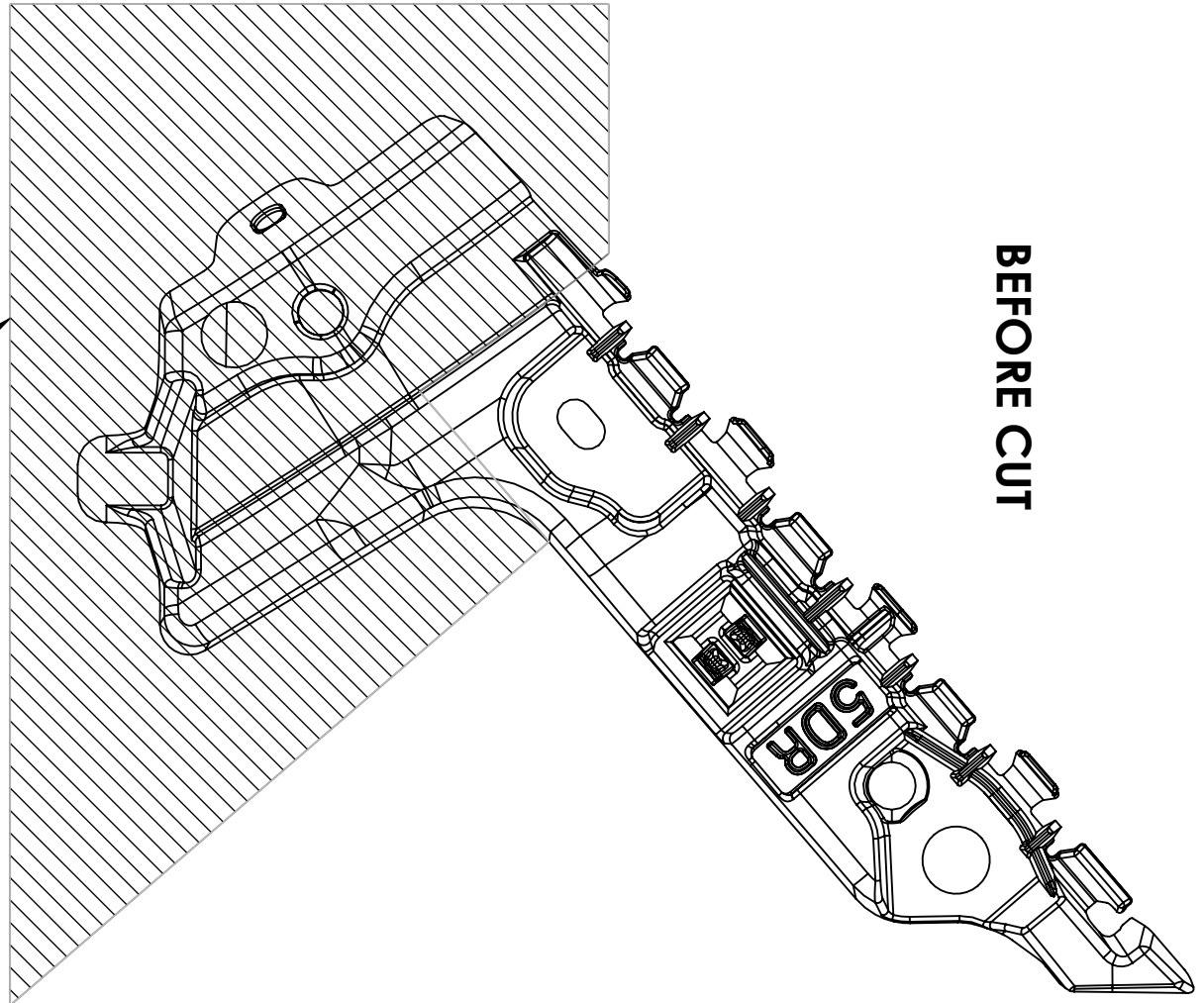
2

1

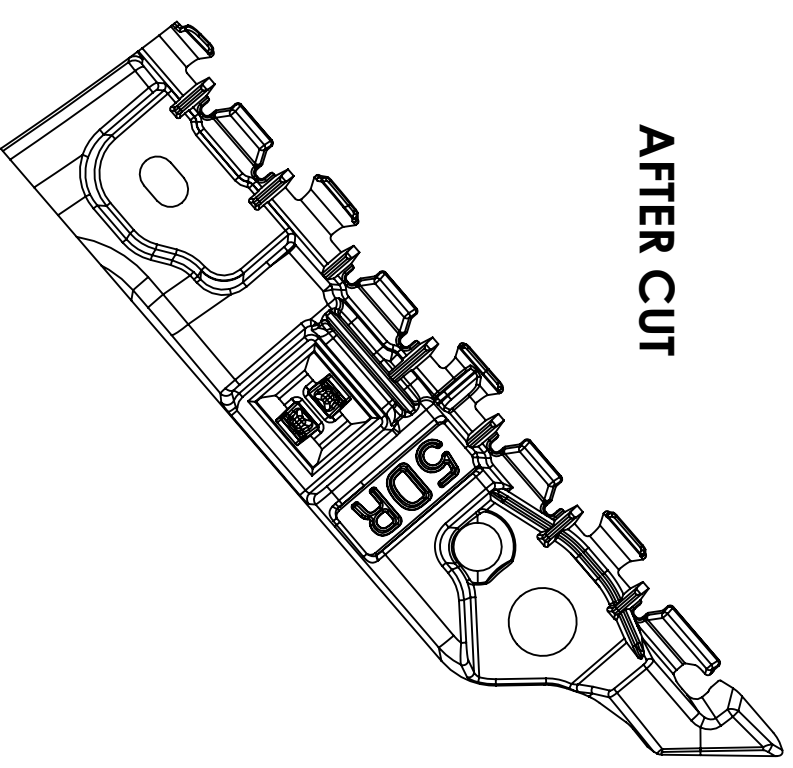
# STEP 10

TRIM OEM BUMPER TRIM BRACKET AS SHOWN.

BEFORE CUT



AFTER CUT



UNLESS OTHERWISE SPECIFIED:  
 DIMENSIONS ARE IN INCHES  
 TOLERANCES:  
 TWO PLACE DECIMAL = NA  
 THREE PLACE DECIMAL = NA  
 DEGREES = NA°  
 3D PROFILE TO MODEL = NA  
 INTERPRET GEOMETRIC TOLERANCING  
 PER: ASME Y14.5M-1994

USED ON:  
 Z1 + BRONCO

MATERIAL  
 NA  
 FINISH  
 NA  
 DO NOT SCALE DRAWING

NAME	DATE
MCW	10/24/23
MCW	10/24/23

ENG APPR.  
**FUN-HAVER OFFROAD**

4403 Stough Rd  
 Concord, NC 28027  
 www.funvehicles.com

**PROPRIETARY AND CONFIDENTIAL**  
 THE INFORMATION CONTAINED IN THIS  
 DRAWING IS THE SOLE PROPERTY OF  
 FUN-HAVER OFFROAD.  
 ANY REPRODUCTION IN PART OR AS A  
 WHOLE WITHOUT THE WRITTEN PERMISSION  
 OF FJR VEHICLES IS PROHIBITED.

COMMENTS: FOR ALL NON-DIMENSIONED FEATURES,  
 PARTS MUST ADHERE TO 3D PROFILE TOLERANCE

TITLE:  
**FHOR RQP BRACKET  
 INSTALL GUIDE**

SIZE DWG. NO.  
**B** NA

SCALE: 1:2 SHEET 6 OF 9

B

A

B

A

4

3

2

1



4

3

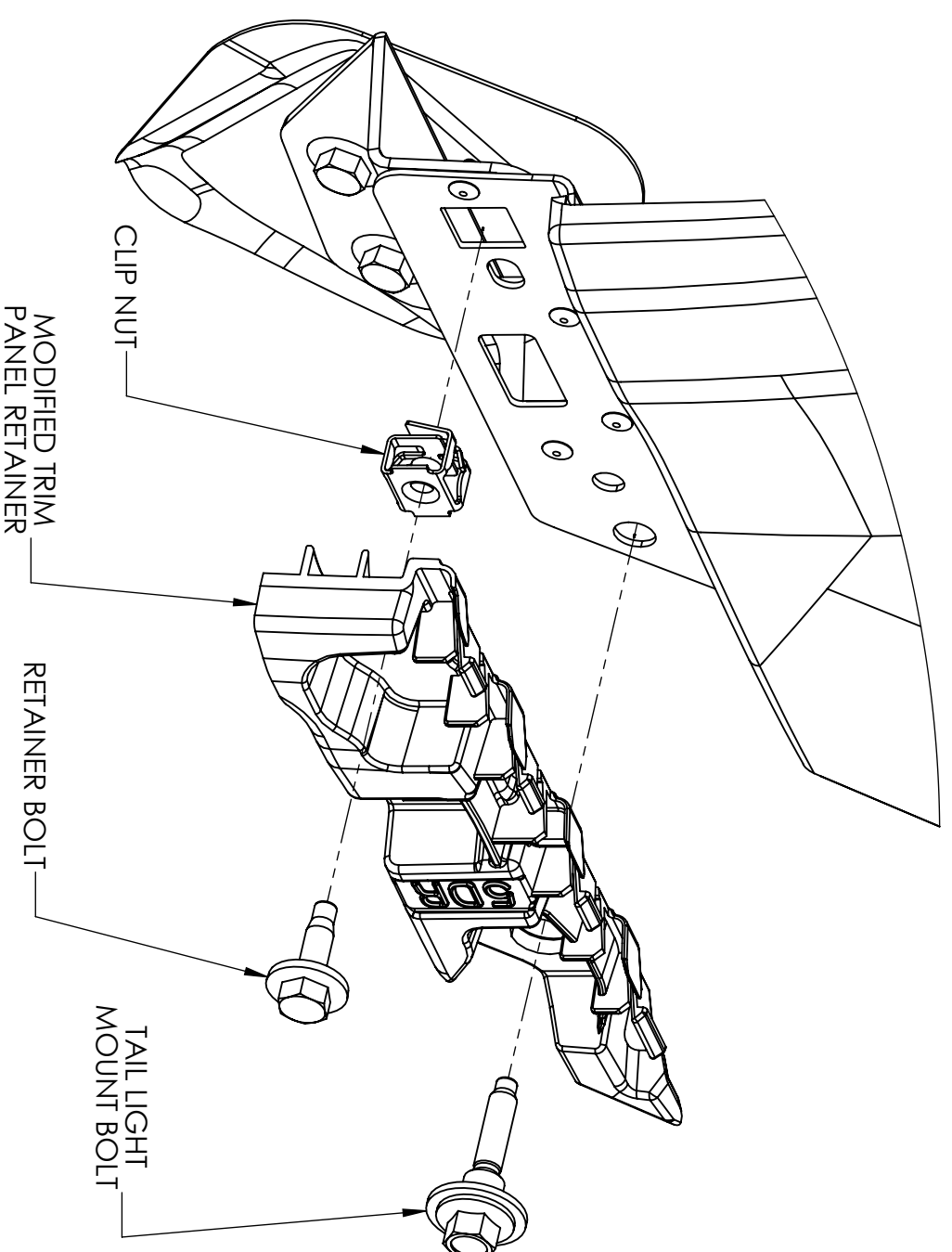
2

1

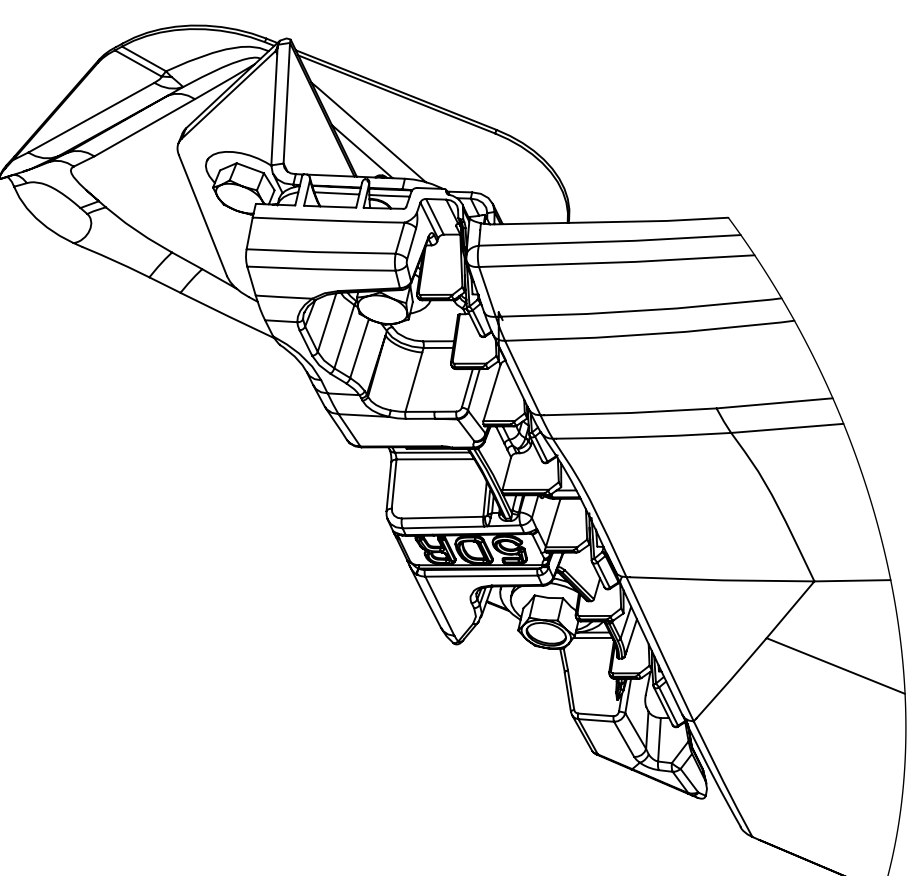
# STEP 11

REINSTALL TRIMMED OEM BUMPER TRIM BACKET WITH OEM HARDWARE.

## EXPLODED VIEW



## COMPLETE



A

B

A

B

4

3

2

1

UNLESS OTHERWISE SPECIFIED:

DIMENSIONS ARE IN INCHES

TOLERANCES:

TWO PLACE DECIMAL = NA

THREE PLACE DECIMAL = NA

DEGREES = NA°

3D PROFILE TO MODEL = NA

INTERPRET GEOMETRIC TOLERANCING PER: ASME Y14.5M-1994

USED ON:

21 + BRONCO

MATERIAL

NA

FINISH

NA

DO NOT SCALE DRAWING

NAME	DATE
MCW	10/24/23
MCW	10/24/23

DRAWN

ENG APPR.

MCW

10/24/23

FUN-HAVER OFFROAD

4403 Stough Rd

Concord, NC 28027

www.funvehicles.com

PROPRIETARY AND CONFIDENTIAL

THE INFORMATION CONTAINED IN THIS

DRAWING IS THE SOLE PROPERTY OF

FUN-HAVER OFFROAD.

ANY REPRODUCTION IN PART OR AS A

WHOLE WITHOUT THE WRITTEN PERMISSION

OF RTR VEHICLES IS PROHIBITED.

COMMENTS: FOR ALL NON-DIMENSIONED FEATURES,  
PARTS MUST ADHERE TO 3D PROFILE TOLERANCE

TITLE:

FHOR RQP BRACKET

INSTALL GUIDE

SIZE DWG. NO.

B NA

SCALE: 1:4

SHEET 7 OF 9

REV

A



4

3

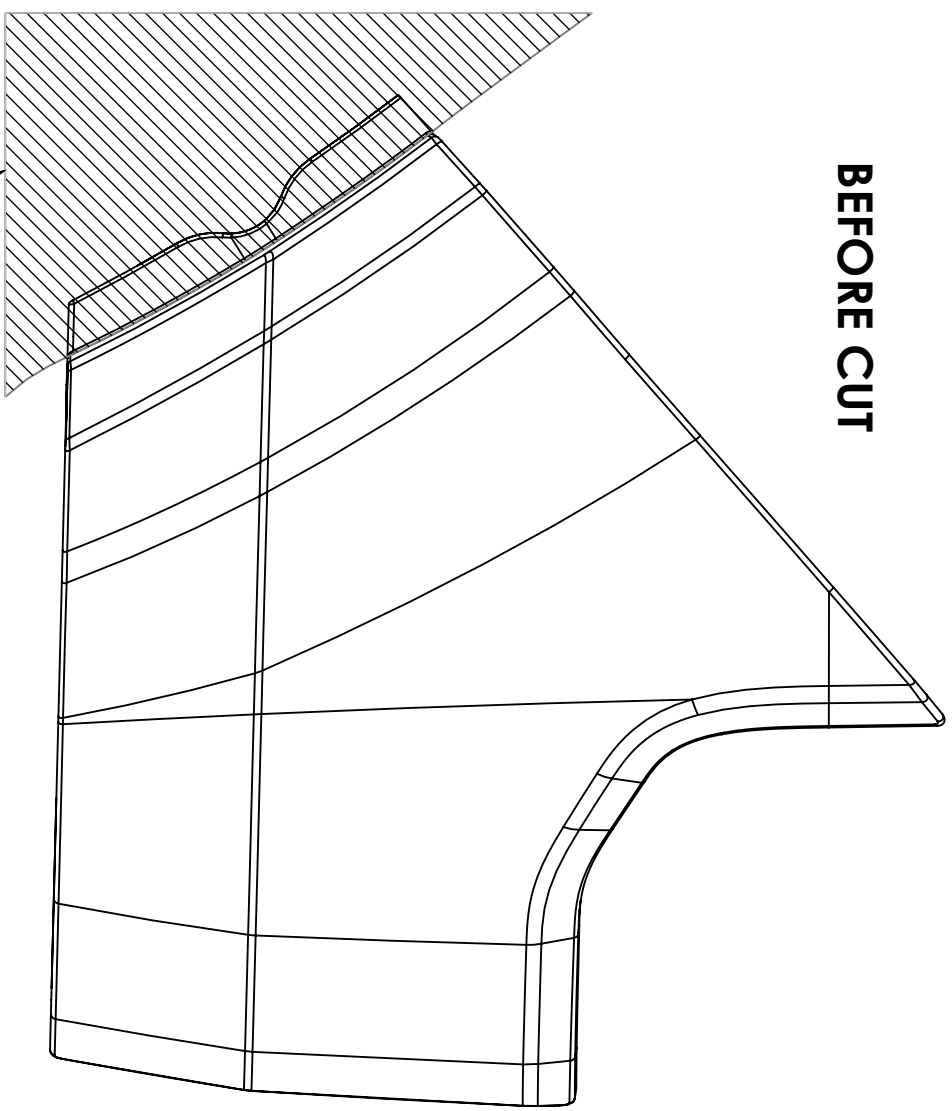
2

1

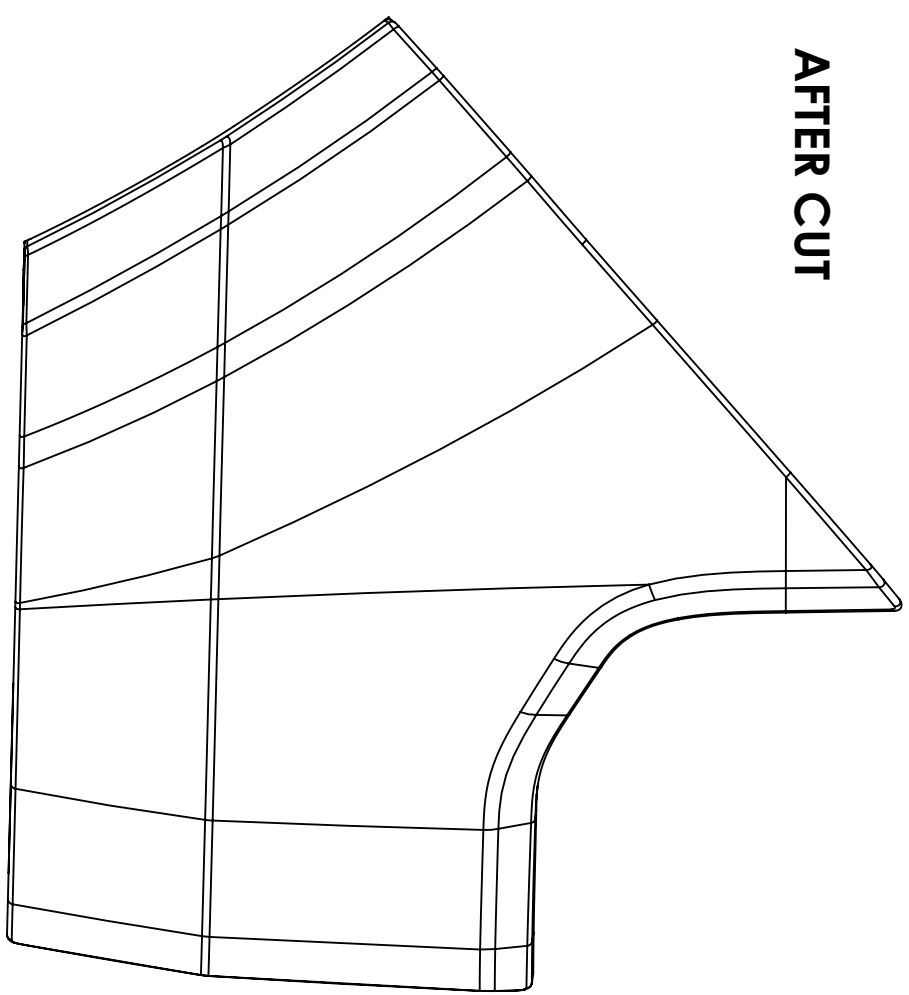
# STEP 12

TRIM OEM BUMPER TRIM AS SHOWN

**BEFORE CUT**



**AFTER CUT**



AREA TO BE REMOVED

UNLESS OTHERWISE SPECIFIED:  
 DIMENSIONS ARE IN INCHES  
 TOLERANCES:  
 TWO PLACE DECIMAL = NA  
 THREE PLACE DECIMAL = NA  
 DEGREES = NA  
 3D PROFILE TO MODEL = NA  
 INTERPRET GEOMETRIC TOLERANCING PER: ASME Y14.5M-1994

USED ON:  
21 + BRONCO

MATERIAL: NA  
 FINISH: NA  
 DO NOT SCALE DRAWING

NAME	MCW	DATE	10/24/23
DRAWN	MCW	ENG APPR.	MCW
<b>FUN-HAVER OFFROAD</b> 4403 Stough Rd Concord, NC 28027 <a href="http://www.ftrvehicles.com">www.ftrvehicles.com</a>			

**PROPRIETARY AND CONFIDENTIAL**  
 THE INFORMATION CONTAINED IN THIS DRAWING IS THE SOLE PROPERTY OF FUN-HAVER OFFROAD.  
 ANY REPRODUCTION IN PART OR AS A WHOLE WITHOUT THE WRITTEN PERMISSION OF FTR VEHICLES IS PROHIBITED.

COMMENTS: FOR ALL NON-DIMENSIONED FEATURES, PARTS MUST ADHERE TO 3D PROFILE TOLERANCE

TITLE:  
**FHOR RQP BRACKET  
 INSTALL GUIDE**

SIZE: **B**  
 DWG. NO.: NA  
 SCALE: 1:4

REV: **A**  
 SHEET 8 OF 9

B

A

B

A

4

3

2

1



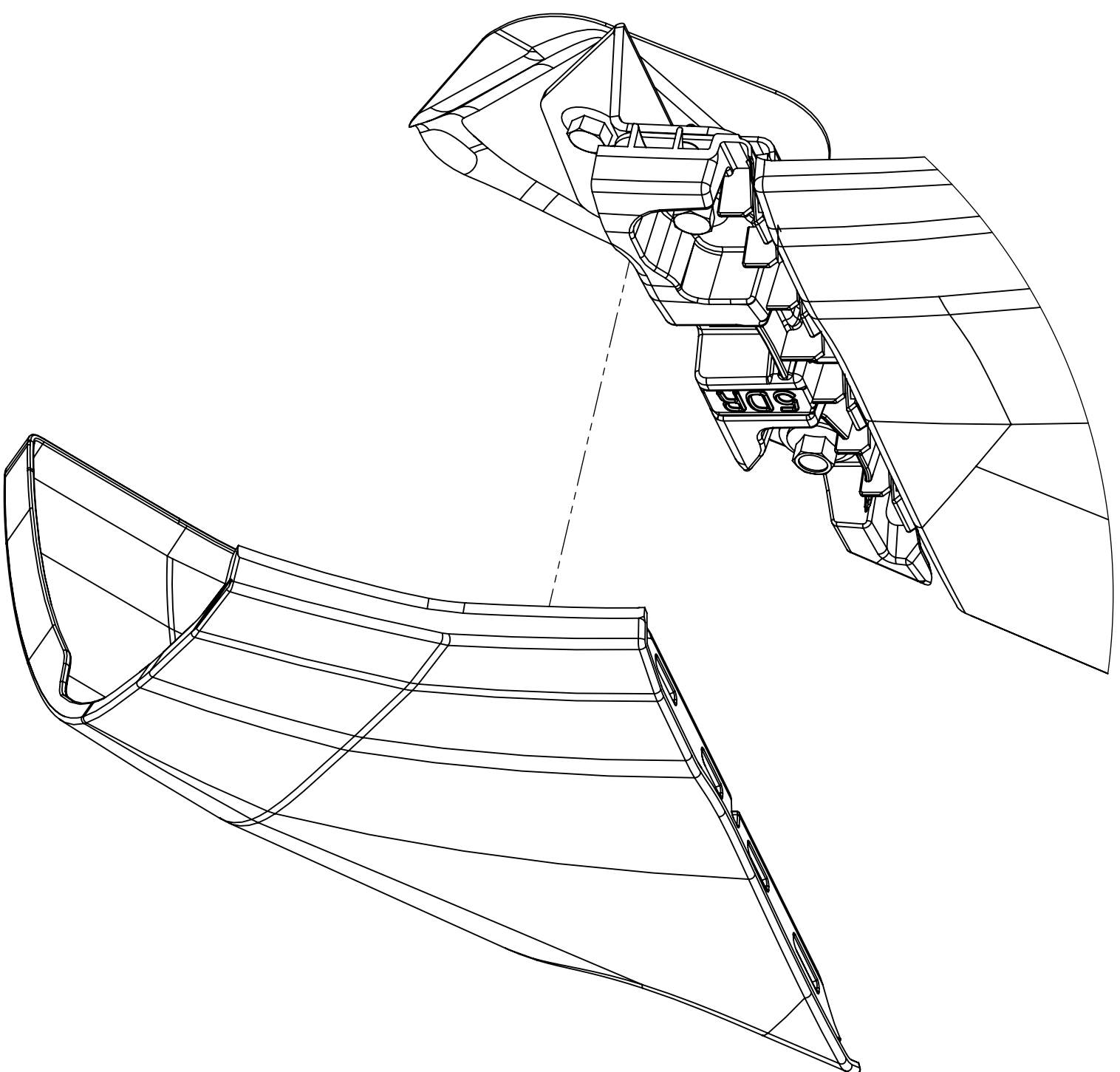
4

3

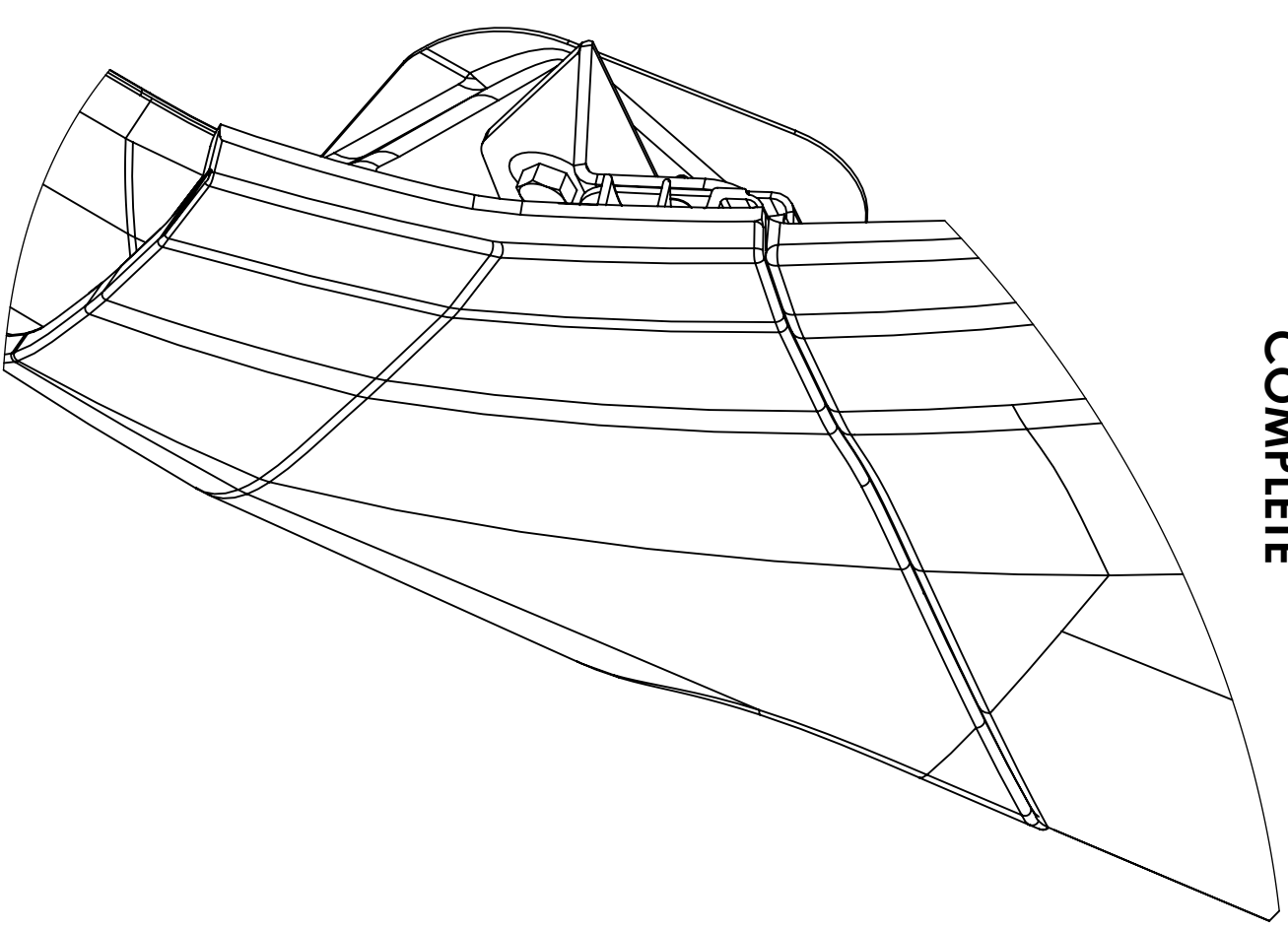
2

1

### EXPLODED VIEW



### COMPLETE



# STEP 13

REINSTALL BUMPER TRIM.

UNLESS OTHERWISE SPECIFIED: DIMENSIONS ARE IN INCHES TOLERANCES: TWO PLACE DECIMAL = NA THREE PLACE DECIMAL = NA DEGREES = NA° 3D PROFILE TO MODEL = NA INTERPRET GEOMETRIC TOLERANCING PER: ASME Y14.5M-1994		NAME	DATE	COMMENTS: FOR ALL NON-DIMENSIONED FEATURES, PARTS MUST ADHERE TO 3D PROFILE TOLERANCE
USED ON: -21 + BRONCO		DRAWN MCW	10/24/23	
MATERIAL NA		ENG APPR. MCW	10/24/23	TITLE: <b>FHOR ROP BRACKET INSTALL GUIDE</b>
FINISH NA		<b>FUN-HAVER OFFROAD</b> 4403 Stough Rd Concord, NC 28027 <a href="http://www.fthvehicles.com">www.fthvehicles.com</a>		SIZE DWG. NO. <b>B</b> NA
DO NOT SCALE DRAWING		<b>PROPRIETARY AND CONFIDENTIAL</b> THE INFORMATION CONTAINED IN THIS DRAWING IS THE SOLE PROPERTY OF FUN-HAVER OFFROAD. ANY REPRODUCTION IN PART OR AS A WHOLE WITHOUT THE WRITTEN PERMISSION OF FTR VEHICLES IS PROHIBITED.		REV <b>A</b>
		SCALE: 1:4		SHEET 9 OF 9



B

A

B

A

4

3

2

1