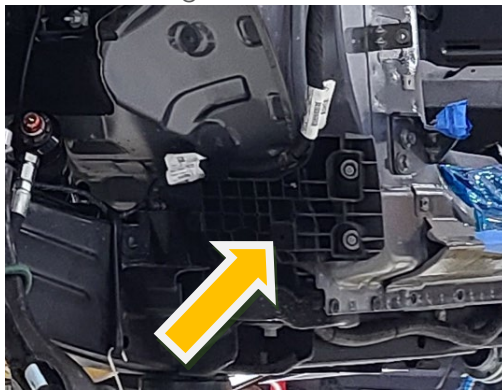
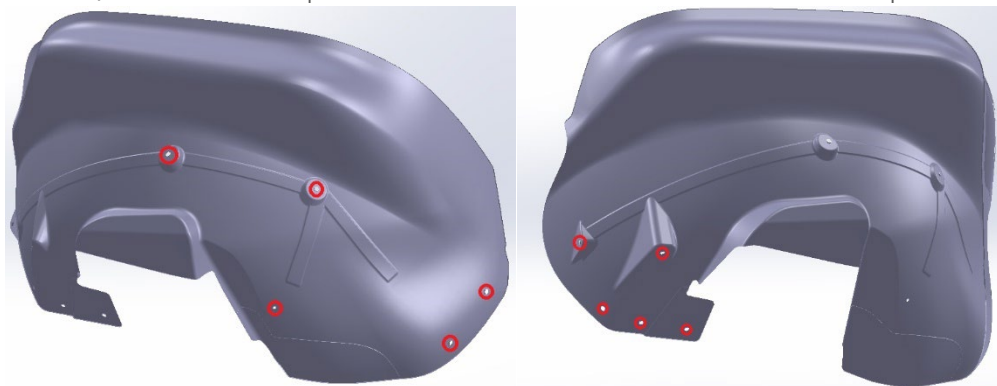


FRONT FENDER INSTALL INSTRUCTIONS

1. The following OEM parts will need to be removed before installing the FHOR fenders:
 - a. Radiator grille
 - b. Front bumper cover
 - c. Front bumper cover mounting bracket
 - d. Fender splash shield
 - e. Fender molding
 - f. Trail Sight front accessory mounts
 - g. Fender filler panel
2. Remove front fenders
 - a. Remove wire guides from back, lower corners of the fender wells



- b.
3. **IF FHOR FENDER LINERS ARE BEING USED:** Drill the 10 holes in each front fender marked below with a 3/8" drill bit. Hole position should be indicated with a recessed pocket.



- a. Install fender liners to check for fit using the factory hardware. Enlarge holes as necessary.
4. Place and align FHOR front fenders to determine mounting hole location, then mark those locations
 - a. Ensure proper clearance to other body panels and moving parts
 - b. **IF FHOR FENDER LINERS ARE BEING USED:** Ensure fender liners are tucked behind the lip of the fenders. Mark 6 holes along the fender where the fender and fender liner overlap. Drill through both the fender and fender liner with a 1/4" drill bit.

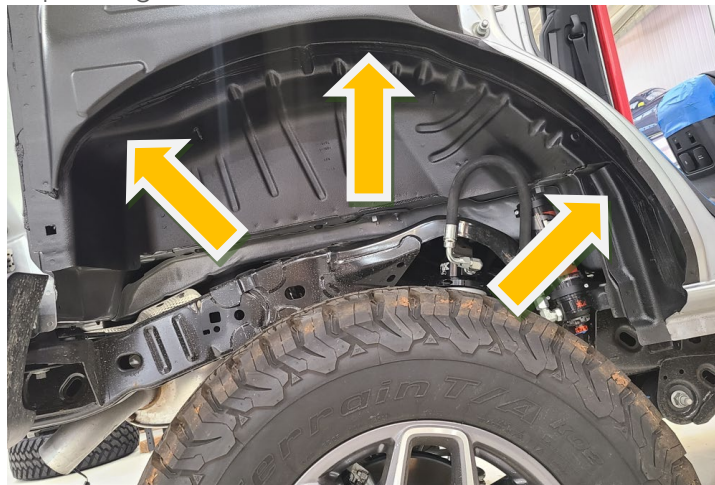
5. Remove fenders and drill mounting holes. Start at 5/16" and enlarge if needed.
 - a. **IF FHOOR FENDER LINERS ARE BEING USED:** Enlarge the 1/4" holes in the fender liner (where it meets the fender) to 15/32" and install rivet nuts
6. Remount factory door well fender trim to new fenders
7. Mount fenders to vehicle and align before tightening
 - a. **IF FHOOR FENDER LINERS ARE BEING USED:** Ensure fender liners are tucked behind the lip of the fenders. Fasten fenders to fender liners using supplier M6 screws
8. Mount front lower valence mounting bracket, lower valence, and upper grill to check fitment and adjust if necessary
9. Sand/fill/shape fenders to match vehicle
10. Remove parts from vehicle, prime and paint
11. Re-install all parts, final tighten all hardware, and re-install all clips

--- Next Step On Following Page ---

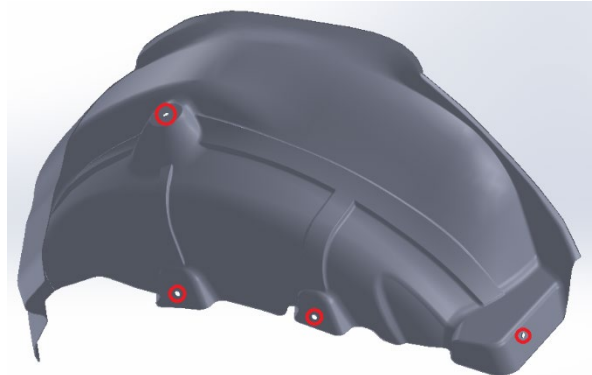
QUARTER PANEL INSTALL INSTRUCTIONS

The following OEM parts will need to be removed before installing the FHOR quarter panels (2-Door and 4-Door)

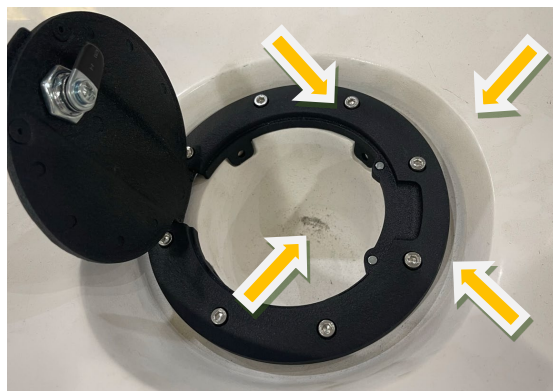
- a. Vehicle top
 - b. Tailgate opening fender trim
 - c. Rear fender trim
 - d. Fender splash shield
2. Remove OEM rear fenders
 3. **IF FHOR FENDER LINERS ARE BEING USED:**
 - a. Sheet metal will need to be trimmed and rolled for clearance (example below). If not using fender liners, sheet metal may still need to be trimmed and rolled depending on tire clearance.



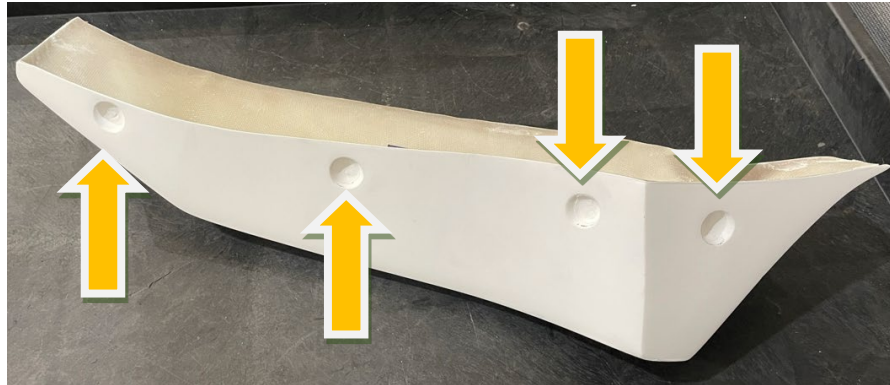
- b. If not using fender liners, sheet metal may need to be trimmed and rolled depending on tire clearance
- c. Drill the 4 holes in each front fender marked below with a 3/8" drill bit. Hole position should be indicated with a recessed pocket.



- d. Install fender liners to check for fit using the factory hardware. Enlarge holes as necessary.
4. Place and align FHOR fenders to determine mounting hole location, then mark those locations
 - a. Ensure proper clearance to other body panels and moving parts
 - a. **IF FHOR FENDER LINERS ARE BEING USED:** Ensure fender liners are tucked behind the lip of the fenders. Mark 4 holes along the fender where the fender and fender liner overlap. Drill through both the fender and fender liner with a ¼" drill bit.
5. Remove fenders and drill mounting holes. Start at 5/16" and enlarge if needed.
 - a. **IF FHOR FENDER LINERS ARE BEING USED:** Enlarge the ¼" holes in the fender liner (where it meets the fender) to 15/32" and install rivet nuts
6. Fuel door
 - a. Place fuel door on drivers side quarter panel and mark mounting holes on tabs protruding into pockets of quarter panel. Door will swing towards the front of the vehicle.



- b. Drill (4) 7/64" holes
- c. Using a 3 ½" hole saw, cut out the bottom of the fuel fill pocket. Cut from the fuel door side towards the back side of the fender.
- d. Install fuel door to confirm fitment, and then remove for paint/body work
7. Mount fenders to vehicle and align before tightening
 - a. Confirm clearance to fuel neck/cap, additional trimming may be necessary.
 - b. **IF FHOR FENDER LINERS ARE BEING USED:** Ensure fender liners are tucked behind the lip of the fenders. Fasten fenders to fender liners using supplier M6 screws
8. Rear door caps (4 door only)
 - a. Paint the inner skin before installation. It will be riveted in place and won't be removable after the initial fit up and will be visible when the door is open. We recommend either black or body color.
 - b. Drill (4) ¼" holes in the outer skin centered in the indentations



- c. Drill (4) 15/32" holes in the inner skin centered in the indentations and install supplied M6 rivet nuts



- d. Drill (4) 3/16" holes in the inner skin in approximately the locations circled in red below



- e. Prep inner door skin and apply supplied adhesive tape around the outside of the surface where it mates with the door. Also apply adhesive tape covering the holes previously drilled. Orange lines below show the locations to apply the tape.



- f. Fasten the inner and outer skins together with the M6 screws
 - g. Prep door surface for adhesive
 - h. With the rear door closed, align the door cap assembly with the quarter panel body lines as well as possible
 - i. Once aligned, firmly press to door to secure with previously applied adhesive tape
 - j. Remove outer cap skin by removing M6 screws
 - k. ***ENSURE WINDOWS ARE ROLLED UP BEFORE PROCEEDING WITH THIS STEP!***
Drill (3) 3/16" holes into the door through the already drilled holes in the inner skin that are covered in adhesive tape.
 - i. Be very careful not to over penetrate when drilling into the door.
 - l. Rivet inner skin to door with supplied rivets
 - m. Reinstall outer cap skin
9. Sand/fill/shape fenders and door caps to match vehicle
 10. Remove FHOR parts from vehicle, prime and paint
 11. Re-install all parts, tighten all hardware to final spec, and re-install all clips