

SAMEBIKE

PRODUCT INSTRUCTION MANUAL

20LVXD30



<http://www.gzsamebike.com>

EN User Manual
ES Manuale de usuario

DE Benutzerhandbuch
IT Manual dell'utente

FR Manuel utilisateur

SAMEBIKE

Lithium Electric City

folding Mountain bicycle

User's Manual

Production license No : (粵)XK16-002-01025

Model: 20LVXD30



SAMEBIKE

The catalogue of lithium battery folding bike

1.Important Note	3
2.Product components	4
3.Folding Method of Product	5
4.Method of Product assembly	5
Tools preparation	5
Front fender and headlight installation	6
Front wheel installation	6
Adjust Handlebar and standpipes	7
Mounting pedal	7
Adjust saddle and seat tube	8
The method of removing the battery	8
5.Product instruction	8
Charging method	8
Power switch (functional instruction)	9
6.Preparation before riding	10
7.Warranty policy	11

1.Importing warning

- This manual include important safety performance information and service information. Please make sure you have read the following warning content before the first time you use our product.
- If you borrow your electric bicycle to other people, please let the user read this manual, it could help to decrease the risk of accident.
- Please wear a suitable and safe helmet before riding, please wear the clothes with fluorescent and reflective stripes when you ride at night. Don't exceed speed limit, it is a main reason of traffic accident, we should abide by the traffic rule, we shouldn't exceed the speed limit.
- Don't touch the charging hole on the bike, or use metal touch it, otherwise,the accident will be caused by the transient short circuit of the current.
- Zero starting, braking frequent, driving against the wind, carrying people or anything, insufficient air pressure on the tires. All of these will use much electric energy, and then reduce the endurance mileage. If you want the best endurance mileage, please do something as follows:
 - 1.please use assist mode.
 - 2.on the premise of safety, don't brake frequently or use zero starting.
 3. Don't overload.
 4. Before riding, please check the pressure of the tire, and supply enough pressure.
- Our Ebike should avoid prolonged exposure to the sun or rain , avoid storage in places with high temperature or corrosive gas, so as to avoid electroplating parts and paint surface by chemical corrosion and electrical parts damage, resulting in operational failure and accidents
- Your current insurance business may not cover the situation you may encounter when riding a electric bike, please contact your insurance company or insurance broker for relevant consultation
- According to the law in China, riding an electric bicycle or a three-wheeled Electric bike must reach the age of 16. If you use this product in other countries, please refer to the local laws and regulations.
- Bicycles are vehicles with certain risk fact factor , please be sure to abide by the traffic rules. At the same time, when emergency braking , brake the rear wheel first, then brake the front wheel, when cycling speed is too fast. There is a danger of tipping over if you brake the front wheel suddenly, please ride carefully .

2.Product components



1.SADDLE

2.SEAT POST

3.REAR CARRIER

4.FRONT/ REAR

FENDER

5.MOTOR

6.BATTERY

7.FOLDER

8.CRANKSET

9.PEDAL

10.CHAIN

11.DISPLAY

12.VERTICAL

HANDLE STEM

13.BRAKE HANDLE

14.SUSPENSION FORK

15.FRONT/ REAR

DISC BRAKE

16.TIRE

17.KICKSTAND

18.FRONT LIGHT

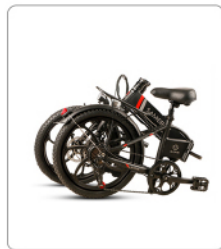
3.Folding Method of Product



1.Adjust the saddle tube and crank, loosen the saddle tube clamp with quick release. Insert the saddle tube down to the bottom and lock the saddle tube clamp with quick release. Adjust the crank Angle to 9 o'clock and fold the pedals at the same time.



2.Folding frame. Open the frame folding with safety clasp.Fold the left and right sides of the frame.



3. Open the folder of the frame, make the front wheel fold nearly parallel to the rear wheel, and finish the folding of bike.

4.Method of Product assembly

Tools preparation



1.Tools



2.Manual



3.Charger

Packing list (All gifts styles and colors are sent randomly and cannot be used as the reason for return)

4.1 Mudguard and headlight installation



1. Loosen the front fork screws with a hexagonal screwdriver



2. Put the headlights and the front fender into the screws and tighten them

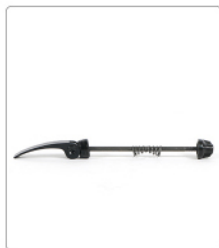


3. Unscrew the two M6 screws on the left and right of the front fork.



4. Fix the mudguard support on the left and right.

4.2 Front wheel installation



1. Put the headlights and the front fender into the screws and tighten them.



2. Prepare the front tires.



3. Put the tire into the front fork groove



4. Install the side with the ebiked disc into the direction with the disc brake



5. Put the quick release handle into the tire



6. Tighten the spring and nut to the screw

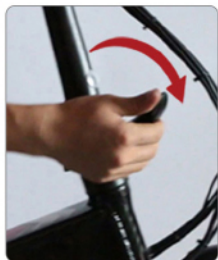


7. After screwing to a certain strength, fasten the quick release handle in the direction of the arrow



8. Lock the quick release handle to complete the front wheel installation

4.3 Adjust Handlebar and standpipes



1. Open the folder of standpipe



2. Fold handlebars to the left.



3. When installing stem, make sure handlebars are properly aligned and tightened



4. Fold the handlebars and perpendicular to the ground



5. Open the folder of the handlebar and adjust the handlebar



6. After adjusting the handle, lock the folder and then finish install of handlebar

4.4 Mounting pedal



1. This bike provides convenient accessories, please Check the L and R marks on pedals.



2. Take wrench from tool box



3. R means it should be install in right side ,L means it should be install in left side



4. Tighten the nut counterclockwise

4.5 Adjust saddle and seat tube



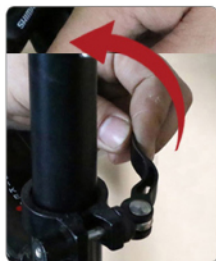
1.Push the saddle down



2.Open the folder of the seat tube



3.Adjust and rotate the seat



4. Finally Lock the folder

4.6 The method of removing the battery (The battery of Standard version can't be removed)



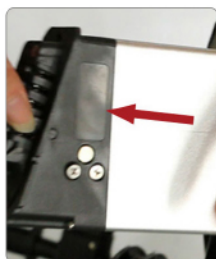
1.Open the folder



2.Loosen the folder



3.Insert the key to battery lock



4.Remove the battery

5.Product instruction

5.1 Charging method (First is the standard version .Second is the the high-end version)

Picture 1



1.Take out the battery charger



2. Charger hole is on the left side of the frame and near the folder

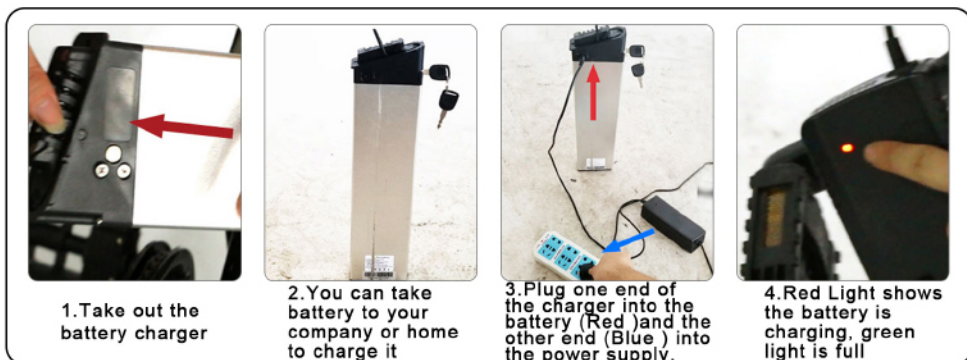


3. Plug the charger into power supply



4.Red Light shows the battery is charging, green light is full

Picture 2 (Charging method of electric bikes with removable batteries) Suitable for High end version



5.2 Power switch (functional instruction)



1. Handle LED display

Turn on the power clockwise (Blue arrows)
Turn off power counterclockwise (Red arrows)
Start riding and turn on the handle (Green arrows) is the electric mode; when riding the bicycle, it automatically turns on the power-assisted mode; when the power is turned off, it is the human-powered cycling mode.



2. Handle LCD display

Turn on the power clockwise (Blue arrows)
Turn off power counterclockwise (Red arrows)
Start riding and turn on the handle (Green arrows) is the electric mode. LCD display shows the power (Yellow) and riding speed (Blue).

6. Notes

1. Before riding, please read the 《User's Manual》 carefully. Please check whether the parts in good condition to ensure the safety of your riding.

2. Please check the status of the vehicle. Please check the brake, wheel, handlebar, folding buckle, quick release part of the electric bike to make sure the electric bike has good status.

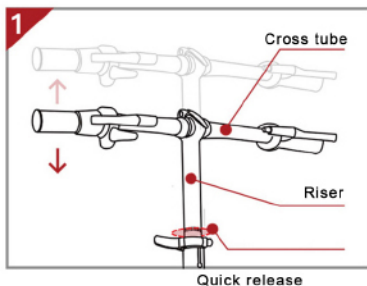
3. Please check the electrical system :To know whether the battery power is enough. if it is not enough, you need charge it as soon as possible.

4. Please check whether the brake system works properly. If it doesn't work properly, please stop using it, please contact the official customer service person.

5. Insert the standpipe at a depth not less than the minimum depth (with the safety line as the minimum depth). See figure 2

6. The height of the saddle tube can be adjusted according to personal preference, but the insertion depth shall not be lower than the minimum insertion depth (with the safety line as the minimum depth) to ensure safety and lock it.

7. Install pedals: if you buy a new products. you need to install pedals by yourself. The pedals are divided into left and right sides. The “R” means the Right pedal . the “L” means the Left pedal. and then tighten them counterclockwise. Remember it should be counterclockwise. See figure 3 and 4





7. Warranty policy

1. Users should operate in accordance with the product manual. In case of any performance fault caused by production quality, the company shall perform the obligations of the three guarantees in accordance with the provisions of relevant laws and regulations of the state.

2. The company is still responsible for the after-sales service of the faults beyond three guarantees and the major components in the Three guarantees, but there will be a cost for repair.

3. If the battery replacement over the warranty time, Our company will be supply the battery by factory price. To ensure safety and not to pollute the environment

the battery must be 1:1 recycling and return to the battery manufacturer .

EPAC EN 15194



GUANGZHOU SAMEWAY ELECTRIC
BICYCLE CO., LTD

Address: NO.1 Factory, Xiling, HuaShan
town, HuaDu district. GuangZhou City,
GuangDong Province CHINA

MADE IN CHINA

PROVIDE LIGHT PRACTICAL
MODERN AND SIMPLE IDEAL
TRAVEL MODE

IF IN DOUBT
SCAN THE QR CODE BELOW FOR MORE SOLUTIONS



<https://www.youtube.com/channel/UCDDjD4TNvZE1Jb0bPkdonvQ>