

KING GUBBY DESIGNS

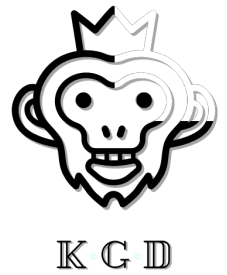


LASER MASTER 3 STACKABLE BRICK FEET



INSTALLATION MANUAL

Included Parts



Stackable Brick Top



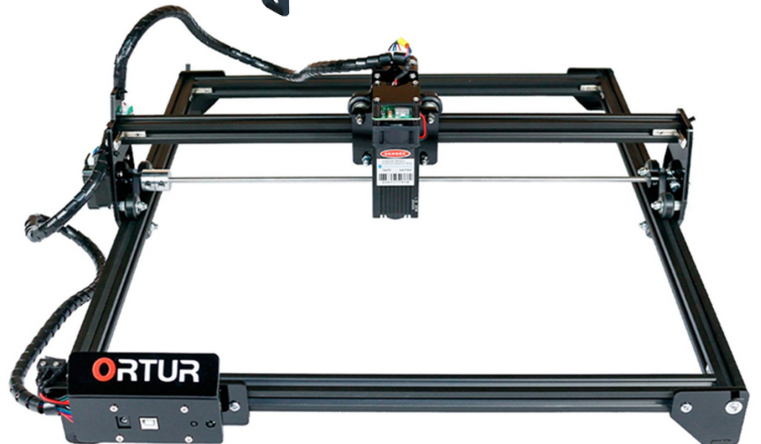
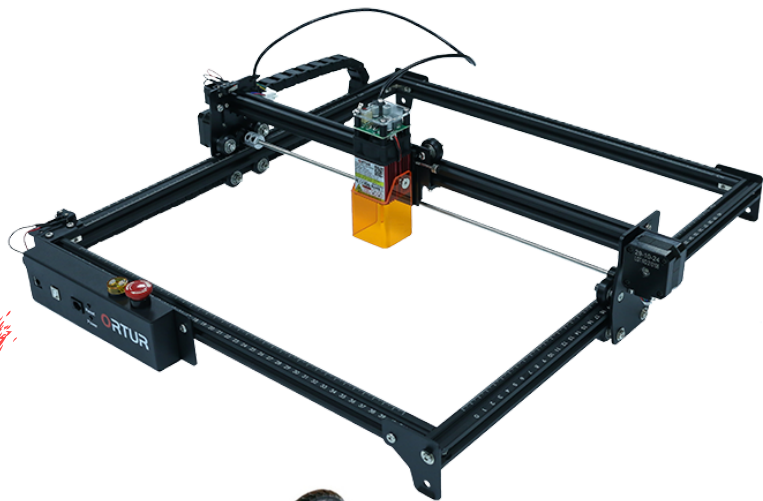
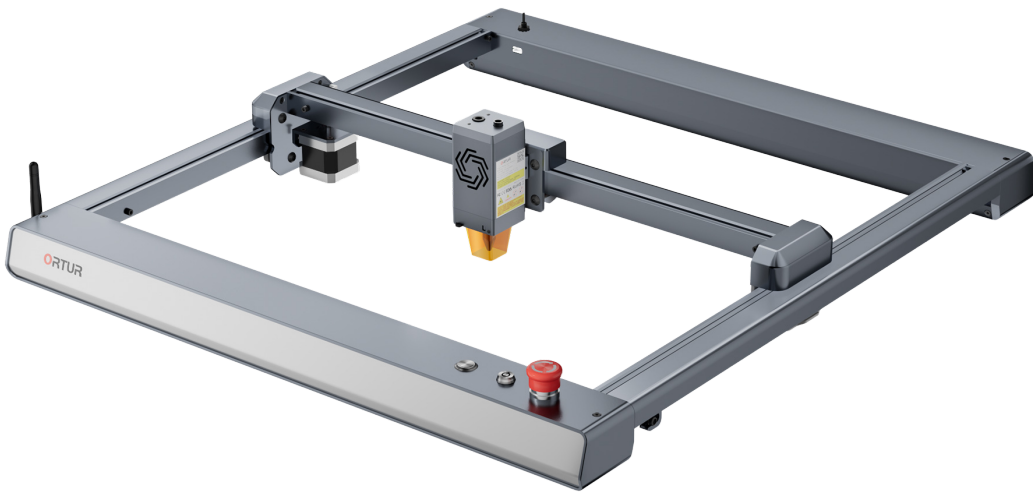
Stackable Brick Bottom



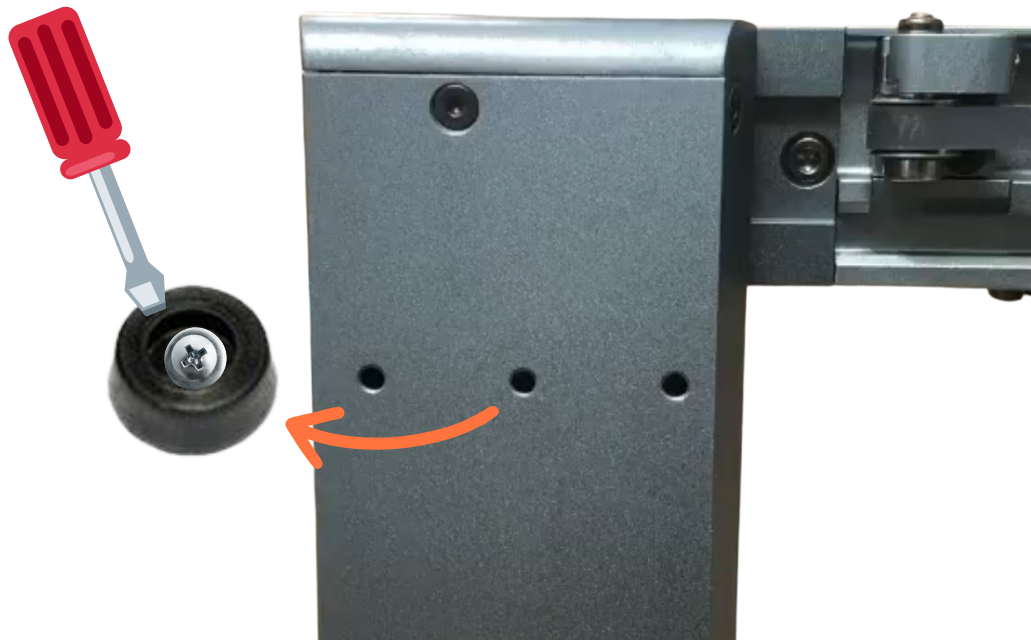
8 x M4 Screws



This product is for the Laser Master 3

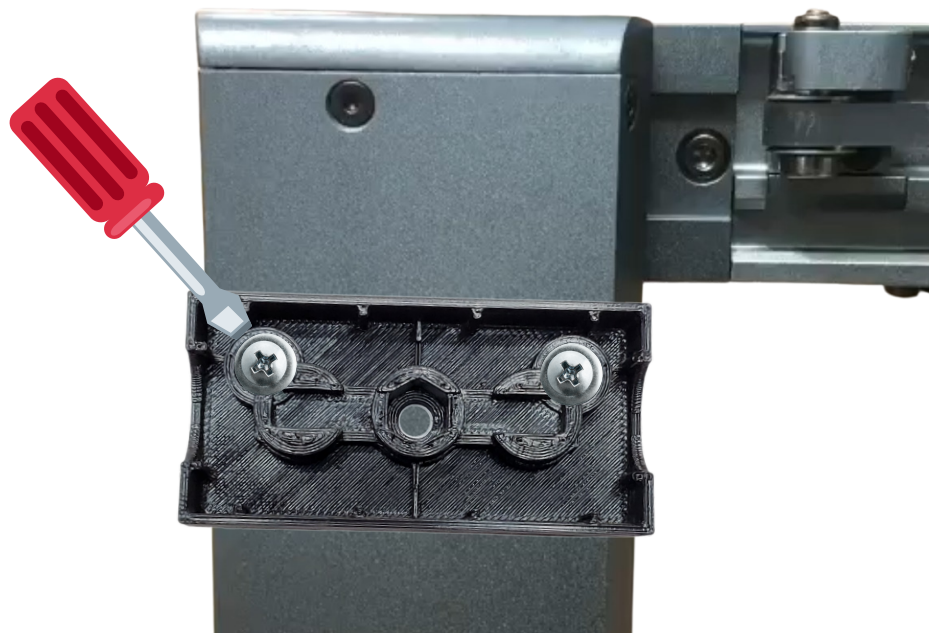
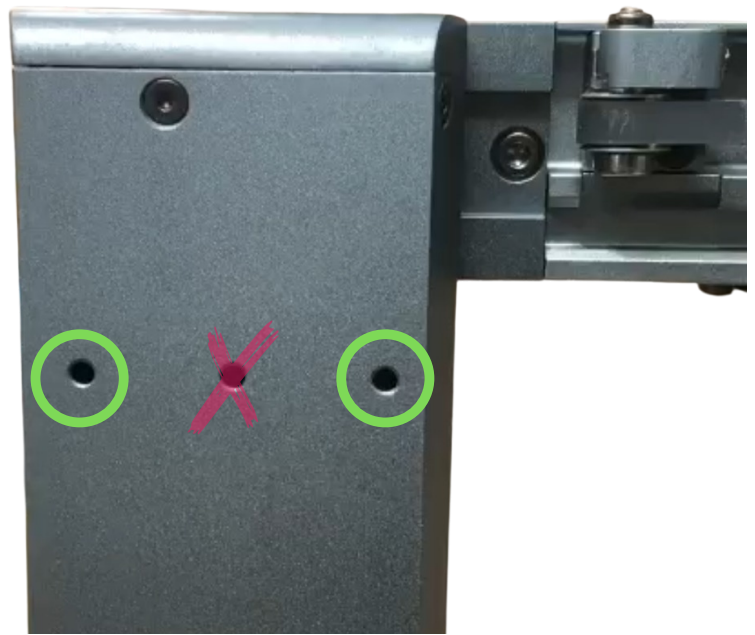


**Before Installing the Stackable Brick Feet:
Remove the stock (rubber grommet) feet, from
the underside of the laser, with a screwdriver.**



Next:

Attach the Stackable Brick Tops to the underside of the laser. Use the provided screws to fasten the tops to the outside threaded holes. The middle hole on the laser and on the foot are not used.



Lastly:

Attach the Stackable Brick Bottoms to the waste board. Use standard wood screws to fasten the bottoms to the board. Then add as many bricks as needed (evenly to each foot) to achieve the height you need.

