



Minimax Implant & Medical

# PRODUCT CATALOGUE

---

2023-24

T. 02 8084 2900 E. [info@minimaximplant.com.au](mailto:info@minimaximplant.com.au)

A. Suite 3 Level 2, 394 Lane Cove Road, Macquarie Park NSW 2113

 [minimaxdental](#)  [minimaximplant.com.au](http://minimaximplant.com.au)



# Table of CONTENTS

## IMPLANT

---

Implants	4-5
Surgical Kits	6
Digital Implant	7

## BONE REGENERATION

---

Medifuse : CGF (Stem Cell)	8
Bone Formation Material	9
Collagen Membrane	10
PTFE Membrane / Bone Tacks	11

## DENTAL MATERIAL

---

Sutures - PTFE / Nylon	12
Impressions / Restoratives / Adhesives	13

## INSTRUMENT

---

Osung Instruments	14
-------------------	----

## DIGITAL DENTISTRY

---

CAD/CAM Digital Solution	15
Medit Intraoral Scanner	16-17
Medit Lab Scanner	18-19
Vatech X-Ray Imaging Systems	20-21

## DENTAL EQUIPMENT

---

W&H	22-23
Piezo Surgery	24
Diode Dental Laser	25
ISQ Monitor	26
Intraoral Camera	27
Curing Light	28
Head Light	29
Dental Chair	30
Cattani Compressor / Suction	31



About  
**minimax**  
 implant & medical

**MINIMISE DOUBT,  
 MAXIMISE SATISFACTION**

- The Best Way to Start Digital Dentistry
- No Hidden Cost & No Sub-scription Fee
- From Clear Aligner to Full Mouth Implant
- The Best Effectiveness of Digital Scanner
- Fully Support & Unlimited Training
- The Best Selling Products in Australia



**Urgent  
 Response**

We provide an immediate express service wherever your clinic is.



**Technical  
 Support**

Our dedicated technical support team will come to your clinic to rectify any technical problems you encounter.



**Prompt  
 Feedback**

We are proud to say that Minimax offers an unparalleled service like no other company.



**Clinical  
 Support**

We have a specialised group at Minimax to assist you with your clinical case and surgery.

About  
**Dentium**  
 For Dentists By Dentists

**TRUST!  
 LONG TERM CLINICAL CASE**

Dentium has been studying only implants for 20 years after its establishment. We are conducting active clinical research with leading dental schools in Korea and abroad. We hold seminars related to implants with long know-how and are conducting educational promotion. In this way, the information of the dental implants between dentists and specialists in each country. We are leading the way to discover high technology and to contribute to the development of the medical industry.



**Dentium**  
 For Dentists By Dentists

# Dentium Implant

For Dentists By Dentists

Systemic solution to your cases.  
A wide range of implant types and prosthetic options will help you achieve a more predictable implant surgery outcome.




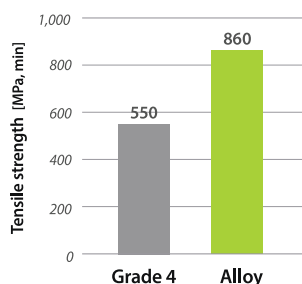
## SuperLine Universal **Bone Level** Implant System

### S.L.A Surface Sandblasted with Large grits and Acid etched

- S.L.A. Surface allows good bone-to-implant contact with good clinical performance, maintaining crestal bone margin.

### Joint Stability & Improved Strength for Zirconia Crown

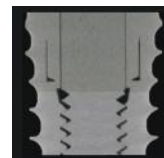
- Material : Grade 4  Alloy
- Long hex design : Improved recognition



### Improved Soft Tissue Management

- Concave abutment design
- Non-coating

### Improved Wall Thickness



- Less screw, abutment & fixture fracture

### Double Thread & Tapered Design



- Double threaded tapered body design provides good success rate in immediate loading cases.

## SimpleLine II **Tissue Level** Implant System

### Ti-Retaining Screw

- Able to accommodate occlusion with ease.
- Minimized risk of resin falling apart through sufficient attachment space.



### Tap Drill

- Tap drills for exquisite surgery to enable early loading
- Smooth and precise surgery with tap drill in type 1~3 bone.
- 4mm of tapping depth for optimum torque control



### SCA Abutment

- Offer additional gingival height options
- Implantation with the SCA Abutment
- Able to reproduce emergence profile
- Effective soft tissue management

### Internal 8° Morse Taper and Octagon Connection

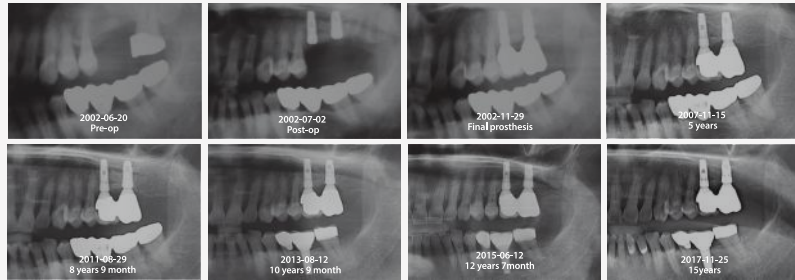
- 1 Screw loosening is well prevented due to the cold welding mechanism for solid abutment application.
- 2 Maximized depth of the octagon design to enable easy adaptation verification for dual abutment application.



Dentium  
For Dentists By Dentists

over 20 years  
of Long term  
data

# LONG-TERM CLINICAL CASE



## Slim Line Mini Implant System for Overdentures & Narrow Ridge cases

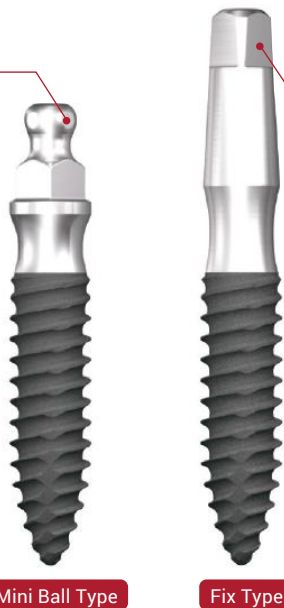
### Tilting Angle



- Up to  $\pm 15$  degrees of tilting angles to accommodate the pathway of the implant

### One Body Design

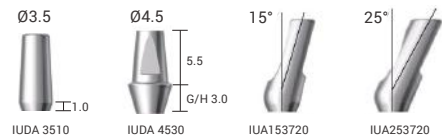
- S.L.A. Surface enables immediate or early loading
- Mini ball ( $\varnothing 1.8$ ) & metal socket make denture production easy
- Wide range of choice for prosthetic options



Mini Ball Type

Fix Type

### Abutment



- Slanted implanting is possible with the combination of angled abutment (15°, 25°)
- Cement the final restoration onto the abutment

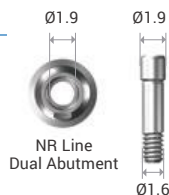


- Selecting direction is easy due to the Octa 45° rotation angles

## NR Line Narrow Ridge 3.1mm Implant

### Abutment Screw

- $\varnothing 1.9$  hole size for occlusion



### Narrow, but Strong

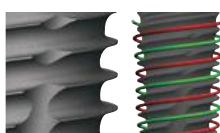
- Body  $\varnothing 3.1$  fixture is very useful for narrow ridge
- Good for high occlusal stress

### Simple GBR

- Minimise bone and gingival resorption

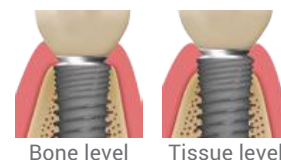
### Extended Thread Design

- Extended thread design helps increase the initial stability



### Hybrid Zone for Bone & Soft Tissue

- Compatible with bone & tissue level
- Stress free GBR



### Firm & stable connection (Internal 10° taper & square shape)

- Less screw, abutment & fixture fracture



- 10° taper & square shape between implant and abutment interface ensures tight sealing
- Square connection

## Dentium Kits

For Dentists By Dentists

Dentium Kits for Implant surgery

### All in One, Sinus Solution!

#### DASK Kit

DASK Kit is a all-in-one kit for different sinus lifting technique. Having this advanced sinus kit will enable you to perform all necessary type of sinus lifting technique with wide range of drills, safety stopper and elevating instrument.

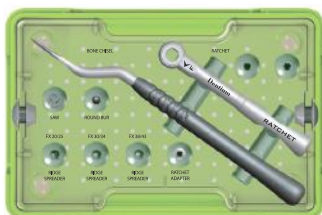


#### Full Surgical Kit

Drills for tapered-designed implants. So, it can achieve initial stability with a tapered drill. Smooth and precise surgery with the counter-sink drill for stability control.

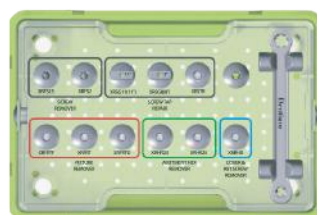


#### RS Kit Ridge Split & Spreader Kit



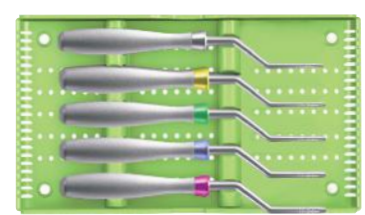
Dentium Ridge spreader kit allows the achievement of space for implantation through the spreading of the bone with a chisel and without drilling. There are three types of Spreaders to create up to Ø4.5mm.

#### Help Kit Rescue Kit



The Help kit can be used with all brands of implants on the market. Easy solutions for critical problems which may occur in the prosthetic process consists of 5 tools in a kit.

#### Osteotome Kit Osteotome Sinus Lift Technique



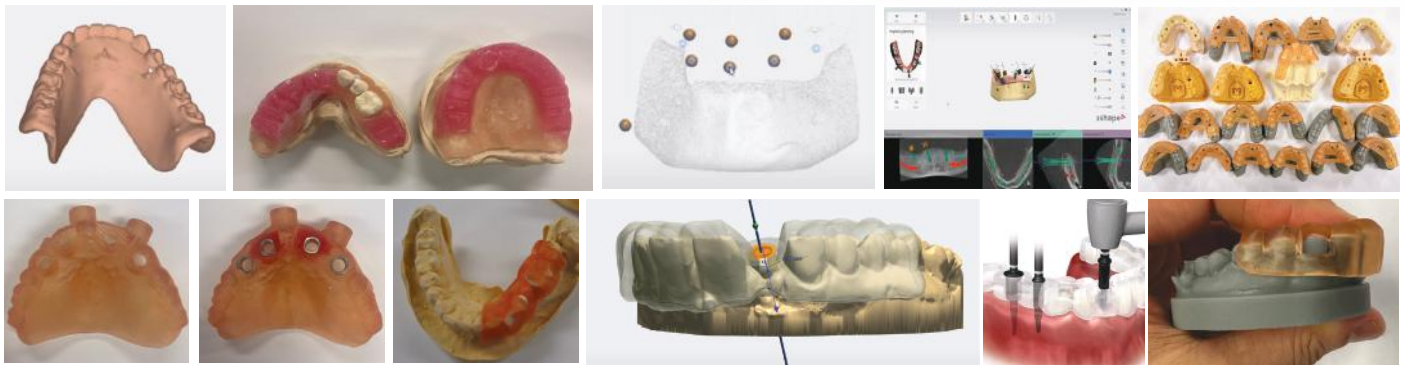
Dentium osteotome kits compress the bone laterally or move it apically, providing a denser bone interface and/or an apical protective "cushion."

# Surgical Guide

Digital Implant Guided Surgery System

## What is a Surgical Guide?

Surgical Guide is a 3D printed guide to assist the surgeon to perform osteotomy at the most optimal position. Our Guides are prosthetically designed by analyzing the patient's intraoral 3D scanned data. We, Minimax Implant Guide will help your implant surgery to be more successful.



## Advantages of Using a Surgical Guide

One of the main advantages of utilising a surgical guide is increased accuracy. This not only reduces surgery time, but reduces trauma, pain, and swelling for patients. In turn, it leads to a shorter recovery time for patients. Additionally, it promotes consistent optimal implant placement, resulting in a more predictable patient care.

## Surgical Guide Kit for Digital Guided Implant Surgery

Dentium Digital Guide Kit provides accurate and smooth realisation of the digital implant planning into real life. The drill goes into the stent sleeve without an extra spoon or another tool so it minimizes the room for human error.



## THE SIMPLEST GUIDE SYSTEM

**IMPLANTGUIDE**  
DIGITAL SURGICAL GUIDED SYSTEM



Download all the details of the digital implant guide on the website!

[www.implantguide.com.au](http://www.implantguide.com.au)



# Medifuge : CGF

Centrifuge Machine  
CGF : Concentrated Growth Factors  
Stem Cell GBR



## The Advanced Breakthrough in Regenerative Dentistry

Growth factors (GF) are proteins which regulate the complex processes of wound healing and enhance the body's healing abilities without side-effects.

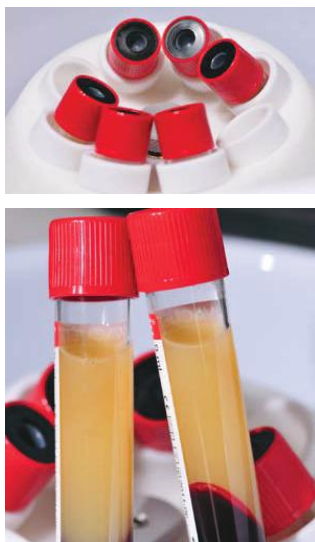
Hematopoietic stem cells (CD34+) are the stem cells that give rise to all the other blood cells through the process of haematopoiesis.

Immunohistochemical analysis prove the presence of antigen CD34 positive cells in CGF. The CGF therapy is an advanced, powerful anti-ageing treatment for the ultimate natural approach to facial rejuvenation; it is toxin and animal product free and simply uses the patient's own blood.



Sticky Bone

## Ultimate Bone & Soft Tissue Grafting Solution for Oral Surgery



### Salient Features of the CGF

- Simple, Safe and Economic
- Natural - 100% Autologous
- Thick Fibrin Matrix
- Leukocytes, Platelets and Growth Factors
- Variable Kinetics Release
- Matrix for Bone Graft Material

**CGF consists of** a high concentration of growth factors (VEGF, PDGF, TGF131 ...) platelets, fibrin matrix and CD34+ cells. (hematopoietic stem cells and precursor cells of the tissue blood) [Rodella 2010]  
The Concentrate Grow Factors (CGF) showed regenerative properties and versatility of use higher than other blood products such as PRP and PRF (Sohn Et al. 20091.)

### MEDIFUGE CGF Accessory

- CGF Box
- Red cap tube 50ea
- White cap tube 50ea
- Butterfly Needle 50 Set
- Tourniquet





# Bone Grafting Material

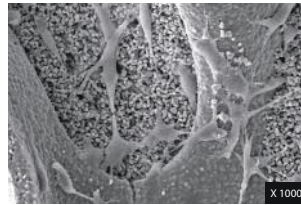
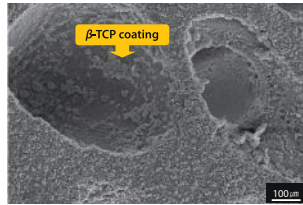
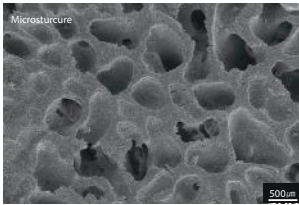
OSTEON II - Predictable New Bone Formation

## Applications

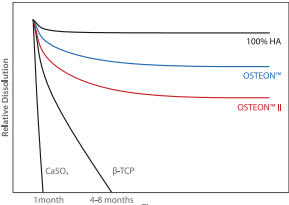
- Ridge augmentation
- Extraction site & osteotomy
- Cystic cavities
- Sinus lift
- Periodontal defect

## Characteristics of OSTEON™ II

- Highly resorbable due to higher  $\beta$ -TCP content
- Easy manipulation
- Excellent wettability
- Osteoconductive synthetic bone graft
- Pore size : 250 $\mu$ m
- Porosity : 70%



Cell Adhesion Test



In Vitro Dissolution Test

## Evidence of Active Bone Formation and Remodeling Process

Extraction socket augmentation with Osteon II and Collagen Membrane

- Publication approved at UPRD in 2013. A human clinical trial conducted by Dr. David Kim.

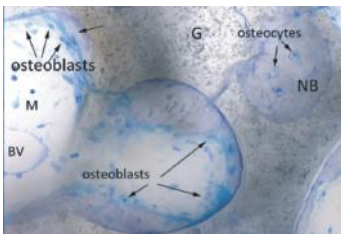


Figure 1  
Ongoing new bone (NB) formation along the graft particle (G) surface by osteoblasts lining the osteoid

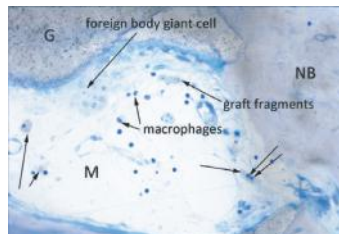
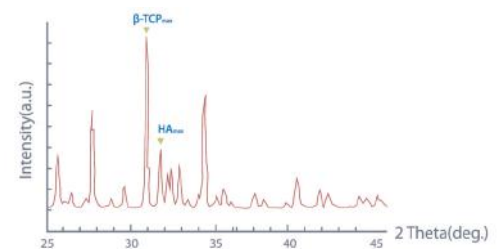


Figure 2  
Fragmentation of the remaining graft (G) border by a multinucleated foreign body giant cell

## Composition

- Osteoconductive biphasic calcium phosphate with higher  $\beta$ -TCP

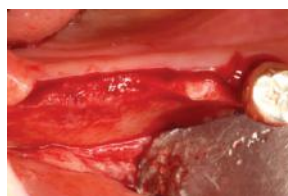


OSTEON™ II = HA 30% +  $\beta$ -TCP 70%

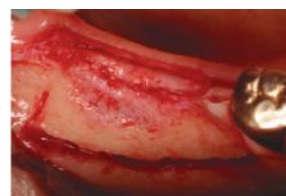
## Clinical Evidence



Pre-op



Flap Reflection



Ridge Splitting



Implantation



GBR



Healing 4M



Flap Reflection (After Healing 4M)



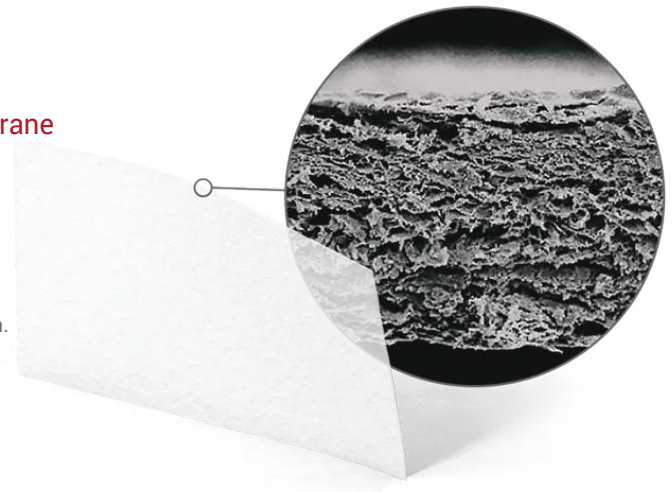
Final Prosthesis

# Collagen Membrane

## Minimally Crosslinked Porcine Peritoneum Collagen Membrane

This Collagen Membrane provides flexibility and strength in an easy-to-handle, easy-to-suture barrier for soft tissue support and graft containment.

Meticulously manufactured from highly purified intact porcine collagen and minimally crosslinked, it's biocompatible and predictably resorbable. It naturally conforms to defects and contours – plus, it's easy to reposition. Once in place, it can be firmly anchored to surrounding tissue with minimal risk of tearing or detachment, thanks to its high suture pullout strength.



### Desirable handling characteristic

- Not side specific.
- Can be placed dry or hydrated.
- Even when hydrated, does not adhere to gloves or instruments.
- Can be easily repositioned for precise placement.
- Takes sutures or tacks with ease, for simple yet secure placement.



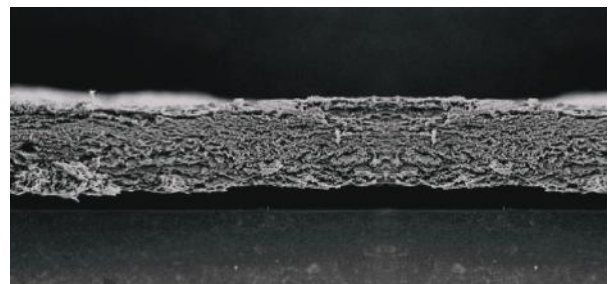
### High tensile strength

Proven biomechanical strength enhances fixation assurance.



### Predictable and controlled resorption

Protects the graft area from unwanted soft tissue infiltration during the initial phase of healing. Resorbs predictably over 3 to 4 months as new host collagen is simultaneously regenerated.



### Minimally crosslinked porcine peritoneum

The intact tissue of porcine peritoneum provides inherent strength which is further minimally crosslinked, leading to predictable resorption and desirable handling characteristics.

- Simultaneous use of guided bone regeneration (GBR)-membrane and implants
- Augmentation around implants placed in immediate extraction sockets
- Augmentation around implants placed in delayed extraction sockets
- Localized ridge augmentation for later implantation
- Alveolar ridge reconstruction for prosthetic treatment
- Filling of bone defects after root resection, cystectomy or removal of retained teeth
- Guided bone regeneration in dehiscence defects
- Guided tissue regeneration procedures in periodontal defects



### Sizes

- 15 × 20 mm
- 20 × 30 mm
- 30 × 40 mm

# PTFE Membrane

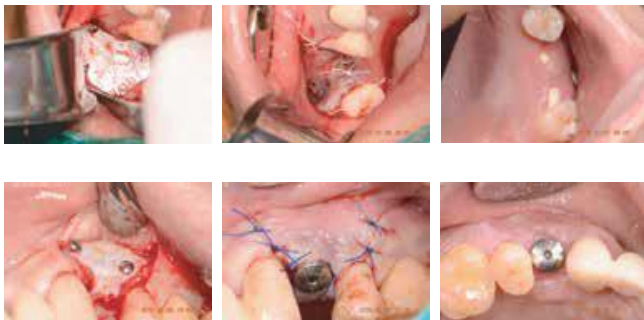
Non-Resorbable Micro Pore PTFE membrane

## Non-Resorbable Micro Pore PTFE Membrane

This is a non-resorbable PTFE membrane made of Micro Pore PTFE and Titanium preventing growth of bacteria while being facilitating cellular adhesion to the surface and plasma protein absorption upon implantation.



## Clinical Case



### Easy to Handle

Titanium-reinforced PTFE membrane is easy to handle and make the shape for tenting and space maintenance.

### Easy to Fix

Can be fixed with Fixing Screw, Bone Screw, Bone Tac or Fixture.

### Various Choices

Various sizes and shapes depending on the case.

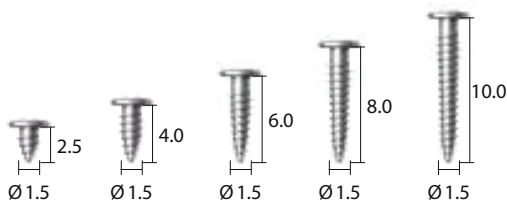


# Bone Tacks

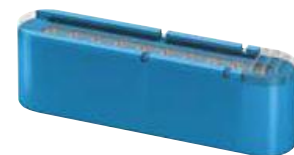
Titanium Tacks For Membrane Stabilization  
For perfect fixation of membranes



## Membrane Screws

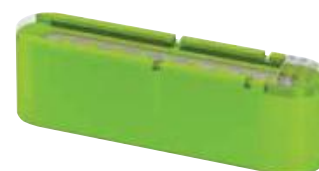
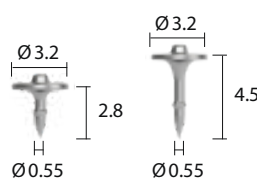
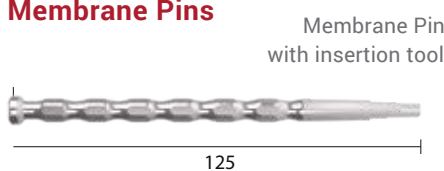


L	Art. No.
2.5	GSC1502
4.0	GSC1504
6.0	GSC1506
8.0	GSC1508
10.0	GSC1510



Pin case : Screw 10ea included

## Membrane Pins



Pin case : Screw 10ea included

# PTFE Sutures

Anti-Bacteria Suture for Periodontal, Bone Graft and Implant Surgery



## Golnit PTFE Suture

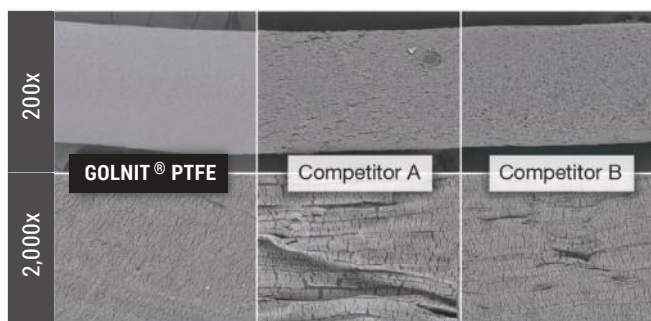
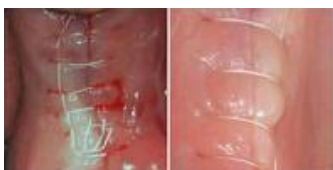
- Completely non-absorbable, 100% pure PTFE
- Monofilament; prevents bacterial wicking
- Biologically inert and chemically nonreactive
- Decreased inflammation and faster wound repair
- Soft; comfortable for patients
- Great handling properties and knot security

## Applications

- Dental bone grafting
- Soft tissue grafting
- Implant surgery
- Periodontal surgery
- Ridge augmentation
- Guided tissue regeneration(GTR)

## Why Golnit PTFE Sutures?

- The largest variety of PTFE sutures ever offered in the market
- Custom-made sutures for dental and aesthetic surgeries
- Needles made of highest grade, 302 series stainless steel wire
- Excellent needle penetration and smooth surface



Golnit® PTFE's proprietary design has less pores and thus, less potential for wicking bacteria into the surgical site.



Easier Handling  
No Memory Foam



Custom-made sutures  
for dental and aesthetic  
surgeries



Needles made of highest  
grade, 300 series  
stainless steel wire



Excellent  
needle penetration and  
smooth surface



Prevent Bacteria  
Wicking Effect

# Monofilament Nylon Sutures

Ailee nylon suture is a non-absorbable synthetic monofilament suture made from polyamide. It is blue in colour. Ailee sutures are used for skin closure, general soft tissue approximation and ligation.

Ailee nylon sutures are made in cleanroom conditions to the highest standards and, depending on the product, are sterilised either by gamma radiation or by ethylene-oxide gas. Automated packaging and a unique pouch system, both of which are patented designs, have made Ailee products even more user-friendly. Speciality products are manufactured using mechanically-drilled needles, providing the best needle/suture combinations for easier passage through tissue, and ensuring less tissue trauma.



# Vericom



## Dental Materials

- Impressions
- Restoratives
- Adhesives



## Impressions

### Vonflex *Heavy*



Excellent  
Fixation Characteristic  
Material

### Vonflex *Medium*



Proven  
One Step Material  
Based on A-silicone

### Vonflex *Light*



Excellent  
Hydrophilic  
Impression Material

### Vonflex *Bite*



Thixotropic  
Bite Registration  
Material

## Restoratives

### Vonflex *Putty*



Proven and Reliable Precision  
Impression Material

### DenFil *N*



Light-cured Restorative  
Nano Hybrid Composite Resin

### DenFil *Bulk Flow*



Light-cured flowable Bulk Fill  
Restorative Material

## Adhesives

### U-Bond *Ortho*



Light-cured  
Orthodontic  
Adhesive

### DenFil *Etchant*



Semi-gel Type  
Etching Agent  
with Phosphoric Acid



## MAKING THE WORLD SMILE

Smile is the most important thing for effective communication in human relationships. I would like to become a company that leads communication with humanity around the world, like Moto of Vericom, "Making the World Smile"

# Osung Instruments

## Essential instruments for oral surgery

Osung creates flawless dental instruments that are more efficient to use with less stress on both you and your patients so that you can provide the best clinical care. Manufactured meticulously in South Korea, the high level of detail incorporated into each of the instruments becomes evident in every moment of your clinical procedure.



### Surgical Instruments Essential instruments for oral surgery

**EFCL15**  
Instrument Cassette



**BWSUS1**  
Bone Well

**RNGF140**  
Bone Rongeur



**NHC150TC**  
Needle Holder



**HTM130C**  
Hemostat



**SCT115**  
Tissue Scissor



**SHF**  
Flat Scalpel Handle



**SHS**  
Scalpel Handle



**URCM10**  
Surgical Curette



**KNO1-2**  
Periodontal Knife



**EP9**  
Periosteal Elevator



**EPBUSER**  
Periosteal Elevator



**EPPR3**  
Periosteal Elevator



**RTCRLM**  
Cheek Retractor



**RTCRL**  
Lip Retractor



**PT41**  
Tissue Plier



**We Study Every Technology Related to Dental Instruments and We Aim for the Top.**

**Diagnostic**



**Periodontal**



**Implant**



**Prosthetic**



# Geo

CAD/CAM Digital Solution  
Abutment & Libraries with CAD/CAM



## Digital Implant Solution

It is possible to create implant prosthesis by using a scanner, Dental CAD, Milling machine and 3D Printer.

### Compatible with



## GMS Scanbody (Intra-oral)

- Biocompatible Titanium (Ti-6Al-4V ELI) from CARPENTER Co. guarantees durability which can reusable.
- Special coating allows to scan without any scan spray.
- Provides with two different sizes. - Short(7.5mm) / Long(11.5mm)
- Consistent performance and visible in x-rays.
- Various Implant System available.
- Customized Abutment Design with CNC or Premilled abutment is available.



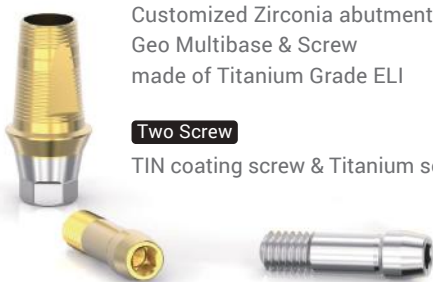
## LL Multibase (Link)

### Zirconia

Screw retained restorations  
Customized Zirconia abutment  
Geo Multibase & Screw  
made of Titanium Grade ELI

### Two Screw

TiN coating screw & Titanium screw



LL Multibase height is editable on GEO Library.



## Geo CMFit (Premill, Blank)

Diameter of Ø10 & Ø14 Size available  
Laser marked Geo & Implant System code  
Provide with two different screw (TiN coating & Titanium)  
**Qualified material - Ti-6Al-4V ELI made by CARPENTER Co.**



## Geo Digital Solution



**MEDIT** Discover your daily 3D scan solutions to enhance your workflow, productivity and ensure precise results.

## MEDIT Intraoral Scanner



MEDIT i600



MEDIT i700

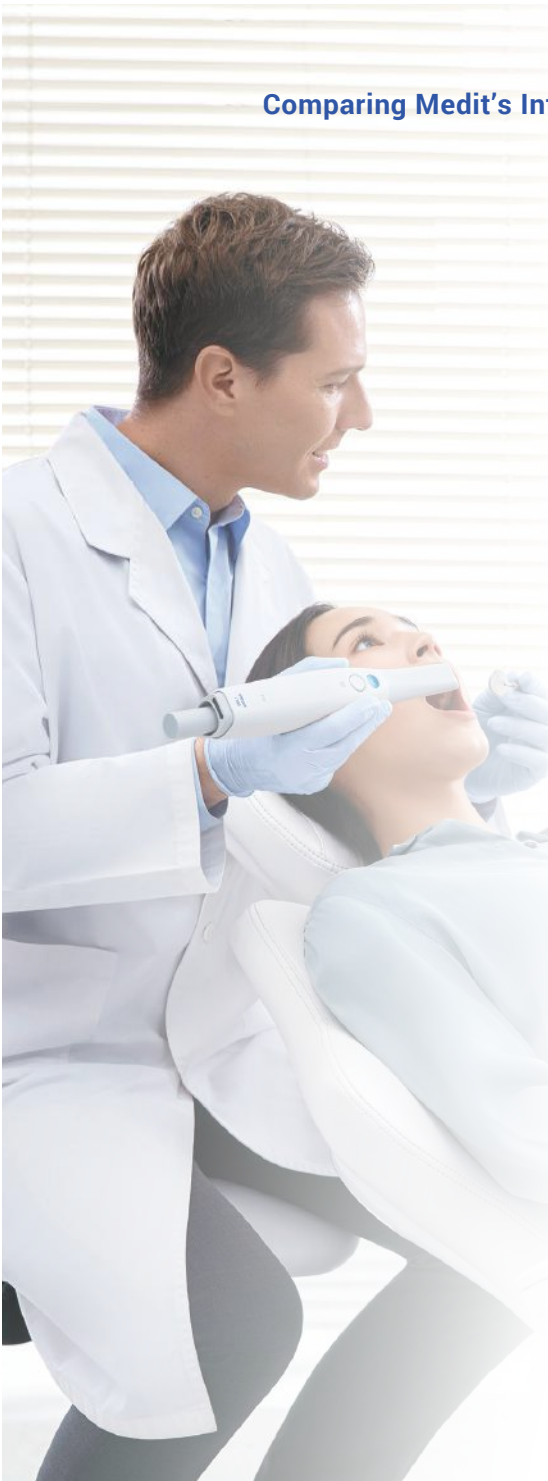


MEDIT i700 Wireless



### Comparing Medit's Intraoral Scanners

	MEDIT	i600	i700	i700 Wireless
Scanning Technology	Scanning frame rate	Up to 35 FPS	Up to 70 FPS	Up to 70 FPS
	Imaging Technology	3D-in-motion video technology Dual camera optical triangulation		
	LED Light Source	✓	✓	✓
	Anti-fogging Technology	✓	✓	✓
Accuracy	Full-arch	10.9µm ± 0.98		
Handpiece	Dimensions	248 x 44 x 47.4mm		313 x 44 x 47.4mm
	Weight	245g		328g (incl. battery)
	Tip Size	22.2 x 15.9mm		22.2 x 17.1mm
Tip	Mirror Angle	45 degrees (Easier to scan distal molar area)		
	Scan Area	15 x 13mm		
	Autoclavable Tips	100 times	150 times	150 times
	Reversible Tip	✓	✓	✓
Special modes	Remote Control Mode	✗	✓	✓
	UV-C Disinfection	✗	✓	✓
	HD Mode	✗	✓	✓
Cable	Mac Compatibility	✓	✓	✓
	Length	2.0m	2.0m	1.0m
	Connectivity	USB 3.1 Gen1 (C Power Delivery)	USB 3.1 Gen1 (C Power Delivery)	USB 3.1 Gen1 (Wireless Hub)







## Experience amazing digital dentistry with MEDIT Scan for Clinics

Our cutting-edge software technology makes scanning more convenient for you.

## MEDIT Bundle Trolley with 27" Touch Monitor



### 27inch Touch Monitor

- Touch Screen Monitor
- Bezel Less Monitor & White Frame
- Medical Grade Monitor
- 1920X1080 Full-HD Display
- IPS(In-Plane Switching)



### MEDIT Trolley

- Free Movement : Applicable to a variety of scenarios
- 360 Degree Rotatable Monitor Arm
- Silent Wheels
- Compatibility : Other brand's scanners may also be used.
- Expanded tray so you can put your tools.
- Easy installation : No drilling Direct Installation.
- Handle design allows you to push and steer more easily scanning instrument placed on the side.
- Hidden outlets so your cables and outlets are no longer cluttered Internal wiring design, beautiful and practical.

# MEDIT T Series Lab Scanner

We've completely overhauled the design of our T-Series. The result is a sleek and sophisticated dental scanner which not only does its work well, but in style.



## Accurate & Detailed Scan Data with Our 4 High-Resolution Cameras

The T710, with its new four 5.0MP-resolution cameras system and blue-light scanning technology, ensures your models and impressions are fully scanned, eliminating all blind spots.

## Superfast Scanning

With our high-quality hardware and optimised software, scan a full-arch in just 8 seconds with the T710, the fastest dental lab scanner!

## High-Resolution Cameras

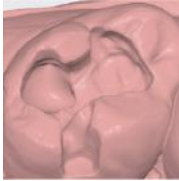
Our 5.0MP cameras ensure high-resolution detailed scan data. With the four-camera system, The T710 lab scanner covers a wide scan area, eliminating any blind spots.

## Speed Up Your Workflow

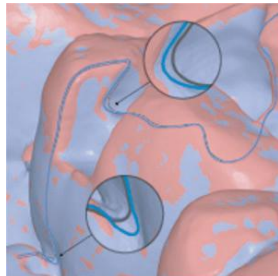
The Medit T710 desktop scanner is equipped with a fast scan engine and highly efficient software algorithm which work in tandem to produce a full-arch scan in just 8 seconds. The advanced, high-speed positioning system of the T-Series is designed for optimal performance for your laboratory, speeding up your workflow and increasing productivity.



X Brand Scan Data  
(4 x 5.0MP cameras)



T710 Scan Data  
(4 x 5.0MP cameras)



Scan Data Comparison

## Auto-Elevation

Say goodbye to stacking jigs for the correct scanning position with our auto-elevation feature. For your ease of use.

**Open System** Enjoy the freedom of our open system which allows you to import and export files in STL format so you can design on virtually any software.



Full-arch Scan  
= 8 Secs

## High Accuracy

4-micron accuracy: ISO 12836

## Full-size Articulator Scanning

To reproduce the exact occlusion orientation, nothing beats scanning the occlusion in the articulator itself. We've designed our T-Series to accommodate any articulator available in the market, comfortably.



### Flexible Multi-Die Scanning

Make your work more efficient by using the flexible multi-die to scan a full-arch or partials with multiple dies simultaneously.



**Conventional**  
5 Steps



**Medit T Series**  
(Medit T710)  
2 Steps



### Do More with Less Effort

We've always prioritised simplicity when developing our solutions. Because we want to ease your work.

### Auto-elevation

Let the scanner decide the scanning height for your object with our auto-elevation feature.

### Wider Scan Area

Scan more objects at the same time thanks to the wider scan area of our T-Series tabletop scanners!

### No Blind Spots

The 4 cameras in the T710 are positioned in a way to ensure that there are no blind spots in your scan data. It only takes one scan to get the full data!



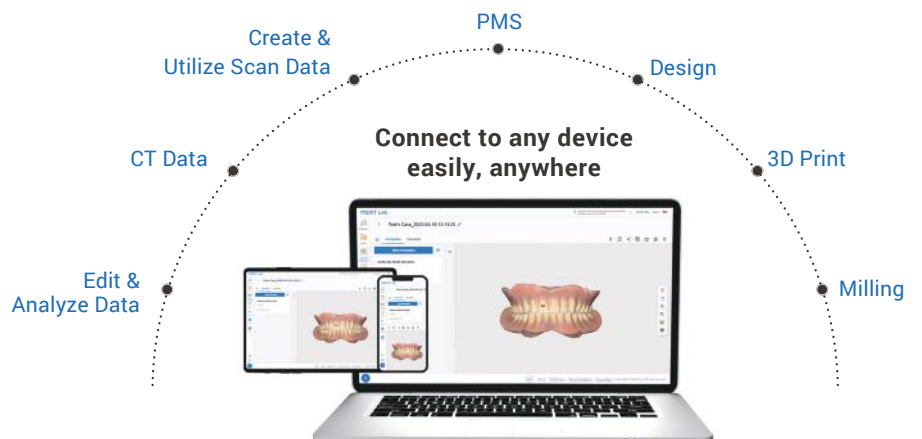
### Lab Scanner Accuracy is the Base of CAD/CAM Work

CAD/CAM dental work requires the highest accuracy to produce well-designed bridges, implants, and bars. Our T-Series ensures the highest-quality scans with high accuracy, adhering to strict international standards, including ISO 12836, ANSI/ADA standard No. 132 and VDI 2634.

## MEDIT Link

Begin your clinic's data management with Medit Link

With Medit Link you can view scan and order status, cloud usage, storage space, and calibration intervals in real time, as well as keep track of daily scans in graph format. This allows you to easily and efficiently manage business performance and communicate effectively.



vatech

Digital X-RAY



Green X  
CBCT

The Advanced 4-in-1 Digital X-RAY Imaging System

With Vatech's extensive experience in the dental imaging field, the Green X provides high-quality images with lower radiation by combining image processing. This will improve your diagnostic accuracy and lead to increased treatment planning and patient satisfaction.



PANO

CEPH

CBCT

MODEL



vatech	PAX-i	A9	Smart Plus	Green X
Imaging	2D	3D	3D	3D
Function	Pano + Ceph (Optional)	CT + Pano + Ceph (Optional)	CT + Pano + Model Scan + Ceph (Optional)	CT + Pano + Model Scan + Ceph (Optional)
Focal Spot Size	0.5mm(IEC 60336)			
Scan Time	Pano HD 13.5 sec Normal 10.1 sec Cept Scan 12.9 sec One Shot 0.9 se	CT 18 sec Pano 11.9 sec / 14.1 sec Cept 1.9 sec / 4.9 sec	CT 18sec Pano 14.1sec/7sec (Option with Magic PAN) Cept 1.9sec/3.9sec	CT 2.9 sec / 9.0 sec Pano 4.0 sec / 14.1 sec Cept 1.9 sec / 4.9 sec
CT FOV Size	✗	8x8 (Anatomical 9.3x8)	10x8.5 (Anatomical 12x9) 10x7 / 5x5	4x4cm, 5x5 8x5cm, 8x8 12x9, 16x9
4-in-1 System	✗	✗	✓	✓
Gray Scale	14 bit			

# vatech



## Ray Air™ Wall

Wall-mounted X-Ray

### Secure Clear Images with A 0.4mm Focal Spot

Regardless of which intraoral sensor you use, the EzRay Air minimises blur and provides additional diagnostic value with a 0.4mm focal spot.



\*Exposure Condition : 65kV, 3.0m A



## EzSensor Classic

RVG Imaging System

### EzSensor Classic provides the image for accurate diagnosis and treatment planning.



EzSensor Classic is rated at IP68, the highest level of the Ingress Protection, which proves that it has complete protection against dust and pressure caused by long periods of immersion.



## VSP

PSP Scanner

### The weight is only 3.3kg which make VATECH VSP is one of the smallest and lightest PSP Scanners!

Vatech VSP is small and light so it can be set up in a small-sized dental clinic efficiently.

As a high-end device, Vatech VSP, has a 4-inch LCD touch screen which provides the largest image preview.

The touchscreen offers quick and easy access to features.

Moreover, the ethernet cable enables rapid image transfer from scanner to pc.

We developed Vatech VSP as a simple, fast, and easy way to diagnose a patient on chairside.



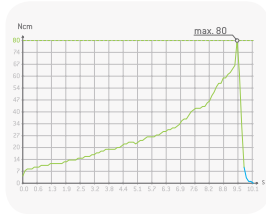
**W&H** implantmed



Implantmed impresses users with its intuitive user interface and simplifies your treatment process.



**Stress-free Healing**  
The automatic thread cutter function supports you when inserting implants in hard bone.



**Secure Placement**  
The automatic torque control guarantees the required security. It can be adjusted from 5 to 80 Ncm.



**Measurable Stability**  
Implant stability can be measured precisely with the W&H Osstell ISQ module, available as an accessory.



**Fatigue-Free Operation**  
Combination with the ultra-short EM-19 electric motor allows long periods of work without fatigue.



The measured Implant Stability Quotient is confirmed by numerous clinical trials.



The combination of Implantmed and Osstell ISQ module ensures improved treatment safety for me and my patients. An important decision-making tool for open healing, immediate loading and immediate restoration.

Safe,  
Simple,  
Flexible.



**W&H** piezomed<sup>PLUS</sup>  
module

The Piezomed module combines an implantology motor and piezosurgery in one device. This means Implantmed can be combined with the Piezomed module and can be used to cover several surgical applications.



Piezomed plus Module      Implantmed

W&H **lisa**

Incredible inside & outside sterilizer

**eco dry +**

**Time saving**

Type B cycles process and perfectly dry 2KG OF LOAD IN LESS THAN 30 MINUTES.

**Extends service life**

Automatic adjustment of the drying time depending on the load reduces the heat exposure time. This extends the service life of your instruments.

**Energy saving**

The optimization of the drying time means reduced energy consumption.

**Reprocessing in less than 15 minutes!**



**lisa EliSense**

Status Sense, Temperature Sense, Smart Sense: three incredible features, combined into EliSense for optimum workflow and output.



**EliSense Status Sense**

All the information you need at a glance:

- Cycle in progress**  
The green lights flash.
- Cycle finished**  
The green lights are static.

**Manual Cycle Stop**

Occurs every time you stop the cycle manually while progressing: The red lights flash.

**Manual Cycle Stop finished**

The cycle error or manual stop has finished: The lights are static.

**Chamber temperature cold**

The load can be handled: The blue lights are static.



**lisa EliTrace**

Full traceability without extra software or computers



**EliTrace Database via Mobile App**

Create the database for EliTrace via the Lisa Mobile App.

**Real Time Remote Monitoring**

Monitor up to 4 sterilizers with your smartphone or tablet in real time from any place within your practice.

**Additional backup**

The cycle database is also saved in your smartphone or tablet. This guarantees you an extra backup and enables you to check any cycle report at any time.

**Barcode scanner onboard**

Lisa Mobile App is able to retrieve cycle reports from a barcode label printed by LisaSafe. The barcode can be read with the smartphone camera.

**User management**

You are able to create and delete users and link pictures to them. The user list will be automatically updated on the sterilizer.



W&H **assistina TWIN** Handpiece Lubrication Unit

With the Assistina Twin, you can maintain your instruments more quickly than ever before. Thanks to the innovative oil nebulization technology, W&H has succeeded in decreasing the maintenance process to a record time of just 10 seconds – for a speedy and incomparably thorough maintenance result.



The innovative oil nebulization technology



# Surgybone *silfradent*

## Silfradent Surgybone Piezoelectric Ultrasonic Bone Surgery System

Surgybone aims at satisfying doctors' everyday need, including the need to exploit room space at best. Thanks to its extreme versatility, selecting the ENDOS programme, the device can be turned into a highly performing ultrasound equipment. User-friendly, always ready for use, Surgybone exploits piezoelectric technology at 360° with a single handpiece.

- Wide Liquid Crystal Display to Visualize the Data Set.
- Direct Push-Button Control for Precise and Prompt Setting.
- Power Regulation According to Different Insert Tips. (Sharp, Blunt, Smoothing, Endodontic)
- Maximum Cutting Precision, avoiding Overheating Necrosis.
- Regulation of VIBRA Function, with PERCUSSION Action and Sselective Cutting.



### Hydric sinus lift with Water pressure

More Safer! More Faster!



### Surgical Handpiece

Possibility of a model with light on the handpiece.

- Micrometric cutting
- Selective cutting
- Minimum tissue overheating
- Cavitation effect
- High visibility in the operating room
- Protection of soft tissues
- Reduction of pain
- Early rehabilitation
- High yield ceramic disks
- External irrigation set
- Light and noiseless
- Manufactured in tested material for more than 20.000 sterilization cycles



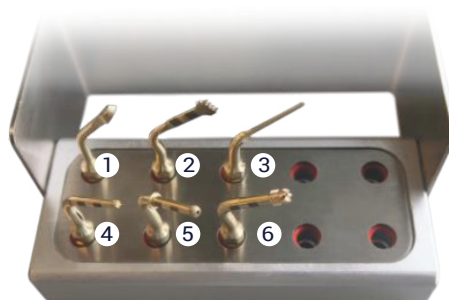
High power handpiece with internal spray

Pump with easy insertion of the irrigation set

Dynamometric wrench

Surgical tray

Kit with 6 insert tips (5sharp, 1smoothing)



### Tip Option

- 1 **Curette** Bone Scraping & Bone Grafting
- 2 **Saw** Ridge Split & Wisdom Tooth Extraction
- 3 **Peridental Surgery** Periodontal Surgery
- 4 **Hpise1** Sinus Lifting 1st
- 5 **Hpise2** Sinus Lifting 2st & Lateral Window Opening (Stopper)
- 6 **Hpise3** Crestal Approach Sinus Lifting



# Diode Dental Laser

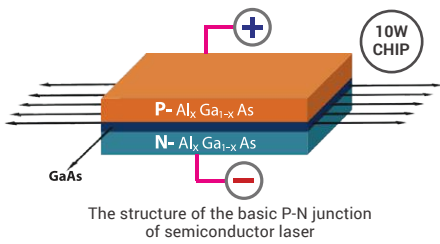
K2 Mobile  
- Wireless handpiece laser



SINCE 2002  
**HULASER**  
LASER SCIENCE FOR HUMANS

### Power Inside

10W LD(Laser diode) chip is equipped in LD Module to maximize efficiency and for stable power.



### Bright and Clean OLED Display

Optimal OLED display to show the small letters clearly



### Soft Button Technology

The soft button technology makes it easy to conduct and pause laser irradiations



### Gravity Sensors for Use of Both Hands

OLED Reacts to use of right and left hands to provide optimal display of equipment's status.



### Ideal Weight and Size for Handheld Device

with battery, the weight is light at 135g and grip is ergonomic. Designed to reduce fatigue in the wrist or fingers.



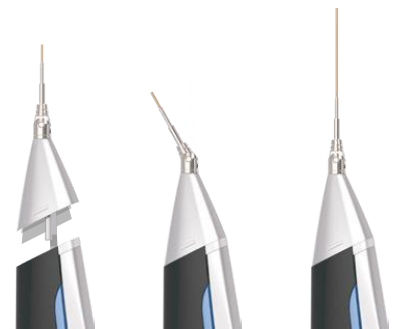
### Long Lasting Battery

Big capacity of 1700mAh battery will make daily practice free from bothering of change of battery.



### Autoclavable Front Aluminum Cap for Various Optic Fibers & Every Applications

Two kinds of tips enable various applications and minimise the inconvenience of tip changing. The front cap made of aluminum is applicable to all types of optic fiber and can easily be used in every application. It is removable for disinfection after use.



### Full Wireless



### Fiber cleaver inside

Fiber cleaver that can cut optic fiber to use tips as new is installed in addition to the versatile tips can minimize cost of consumables.



### Applications of K2 Mobile

more than 30 applications



# ISQ Monitor

## Penguin RFA - Implant Stability Quotient (ISQ) Checker

The PenguinRFA measures implant stability and osseointegration to provide sufficient information to make a decision whether load an implant.



### Reassurance!

Today, the trend in implant dentistry is to have short or no healing period at all before loading. This places a great demand on the clinical team. If conditions are not optimal, poor primary stability may increase the risk of implant failure.

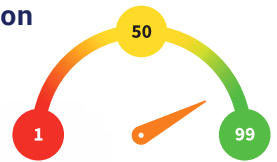
### The Penguin RFA monitor



Just mount the Multipeg™, aim for the top and the ISQ value will be displayed in less than a second. Values above 70 means high stability and are typically recommended for one-stage and immediate loading.

### The Degree of Osseointegration

The ISQ scale is measured from 1 to 99 and correlates strongly to implant micro mobility.



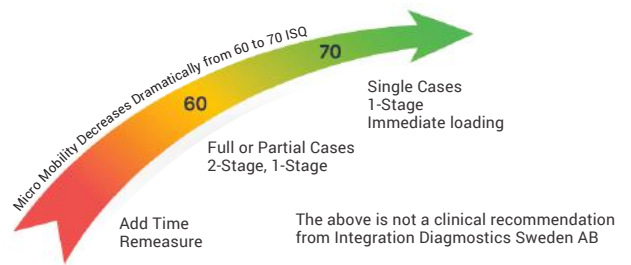
### MulTipeg™ Driver



The Driver is made of stainless steel and works like a screwdriver and a carrier for the Multipeg. Since the Multipeg has a magnet in its top it will attach safely inside the Driver.

### The ISQ-scale and clinical guidelines

Values above ISQ 70 indicate a very stable implant with low micro-mobility. This value is typically recommended for one-stage and immediate loading. A second measurement is recommended before the final restoration to verify osseointegration.



## How to Use Penguin<sup>RFA</sup>

1 | Connect the Multipeg into the implant with the driver

2 | Measure the ISQ with the Penguin RFA. It takes less than a second

3 | Read the ISQ measurement. Above 70 (ISQ) is stable enough to go ahead with the prosthetics

# Intraoral Camera



GoodDrs

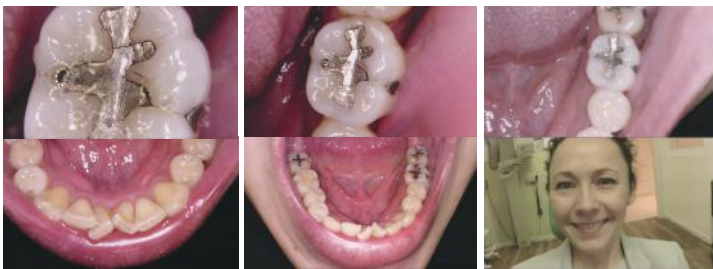


## Whicam M - Autofocus Dental Intraoral Camera with an in-built Mouse Function

Packed with Innovative features, superior image quality and patient accessibility to deliver the ultimate performance with the world's most powerful and versatile Intraoral Camera.

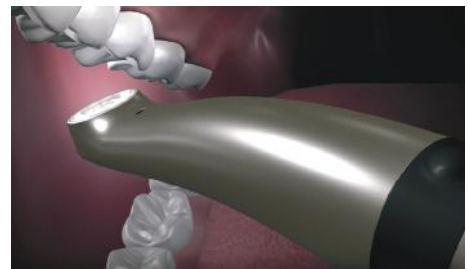
### Macro to Infinity

Camera is able to focus from macro mode (Close) to infinity that includes a full arch and face shot.



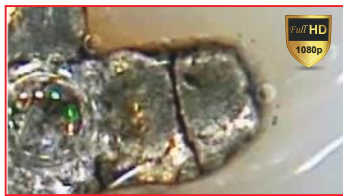
### LED Brightness Adjust

Ability to adjust the LED brightness.



### FHD Image Support

The device shows FHD (1080p) in live image supported by a 5M sensor.



Full HD



HD

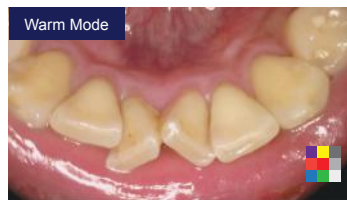
### Metal Body Case

Metal body case increases product durability.



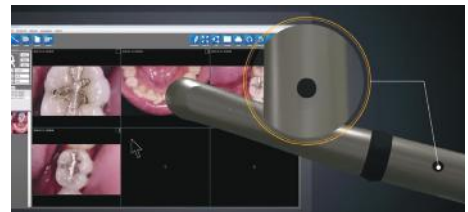
### Colour Impressions

Adjust the colour impression on camera to fit different monitors or screen.



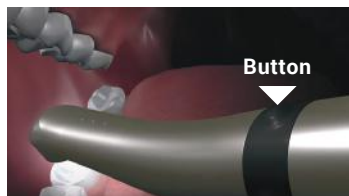
### Mouse Function

Built-in mouse function for user convenience.



### Dual Capture Buttons

Capture buttons are placed on the top and bottom side of camera to make for an easy capture in any position.



### Slim Head Size

Slim head design makes it easier to approach the oral cavity with camera.



# Dental Curing Light

Prime - Multi Purpose Dental Curing Light

**GoodDrs**



It can be used for various purposes depending on the circumstances. Polymerization is possible even on a wide posterior surface at once.

## Wide irradiating surface with a diameter of 12 mm

Polymerization is possible even on a wide posterior surface at once. (The largest size on the market)



**Wide!**

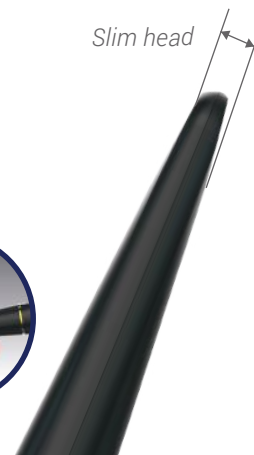


## 5.2mm slim head height

It is easily accessible anywhere in the oral cavity.

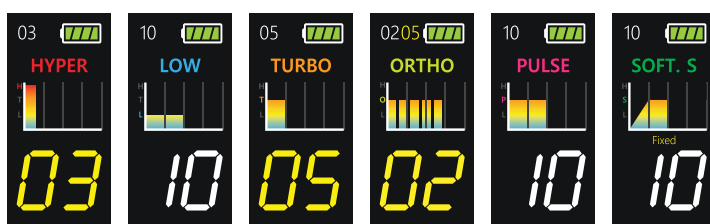


*Slim head*



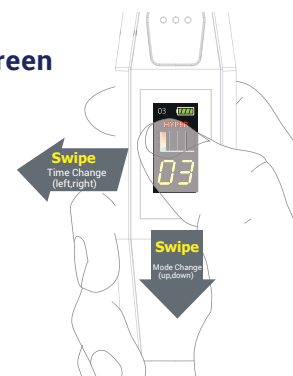
## Various Curing Mode

6 Modes (Hyper, Low, Turbo, Ortho, Pulse, Soft.S)



## Color Touch LCD screen

It is easy to use by using the touch function.



## M.A : Multi-purposed Attachment

It is sterilized so that it can be used repeatedly and is flexible and TIP that emits light can be used for various purposes.



When temporary polymerization is required due to point polymerization



When Root-canal polymerization is required



When proximal areas tooth polymerization is required

# Headlight

**Dr.Kim<sup>AU</sup>**  
WIRELESS HEAD LIGHT

## Shadowless Head Light

Dr Kim Headlight is a wireless LED dental headlight with dual light sources pointing on one spot and light weight.



## Brighter Your Treatment Site

Using headlamp with shadowless effect significantly reduces eye strain and efficiently illuminates your working area. Dr Kim headlight's light is proper white and has no shade. All this allows you to raise your comfort level and enhance your work potential by bringing it to a higher quality standard. In addition, Dr.Kim equipment raises the status of the doctor in the eyes of the patient by offering a different level of control over work quality.

### Shadowless

2 Light sources eliminates the shadow of medical instruments.



### Easy to Use

Easy On & Off  
Simple wearing



### Adjustable Light

Brightness can be adjusted.



### Interchangeable

Interchangeable to individual optics



### No Wires

High quality  
Li-Ion rechargeable battery



### Light-Weight

Easy to wear it  
all day



### Up to 12 Hours

Up to 12 hours of continuous  
work on maximum illumination



### UV Cut-off Filter

Eye protection  
with UV Filter



Simple & Smart

# KISS

Keep It Simple & Smart



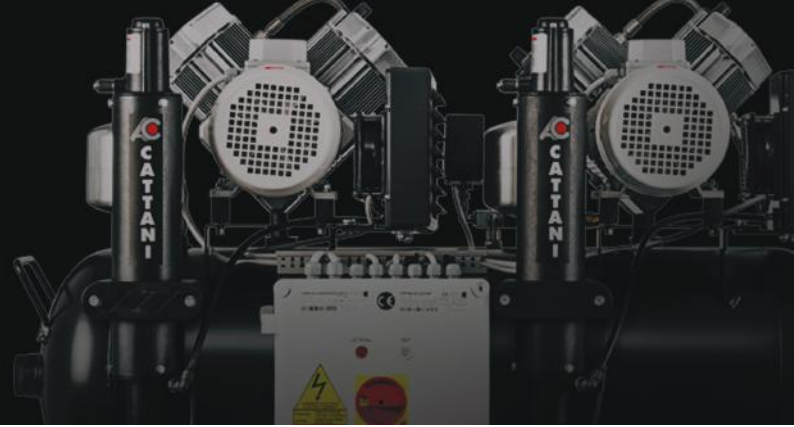
  
MADE IN ITALY



**THE NEW DESIGN TO IMPROVE THE COMFORT  
OF THE PATIENT AND THE DAILY PRACTICE.**



**POWERFUL SUCTION SYSTEM · PREMIUM PLASTIC & METAL · GLASS SPITTOON  
VARIOUS OPTIONS · ADJUSTABLE LED LIGHT (SURGICAL MODE) · ROTATABLE WATER UNIT**



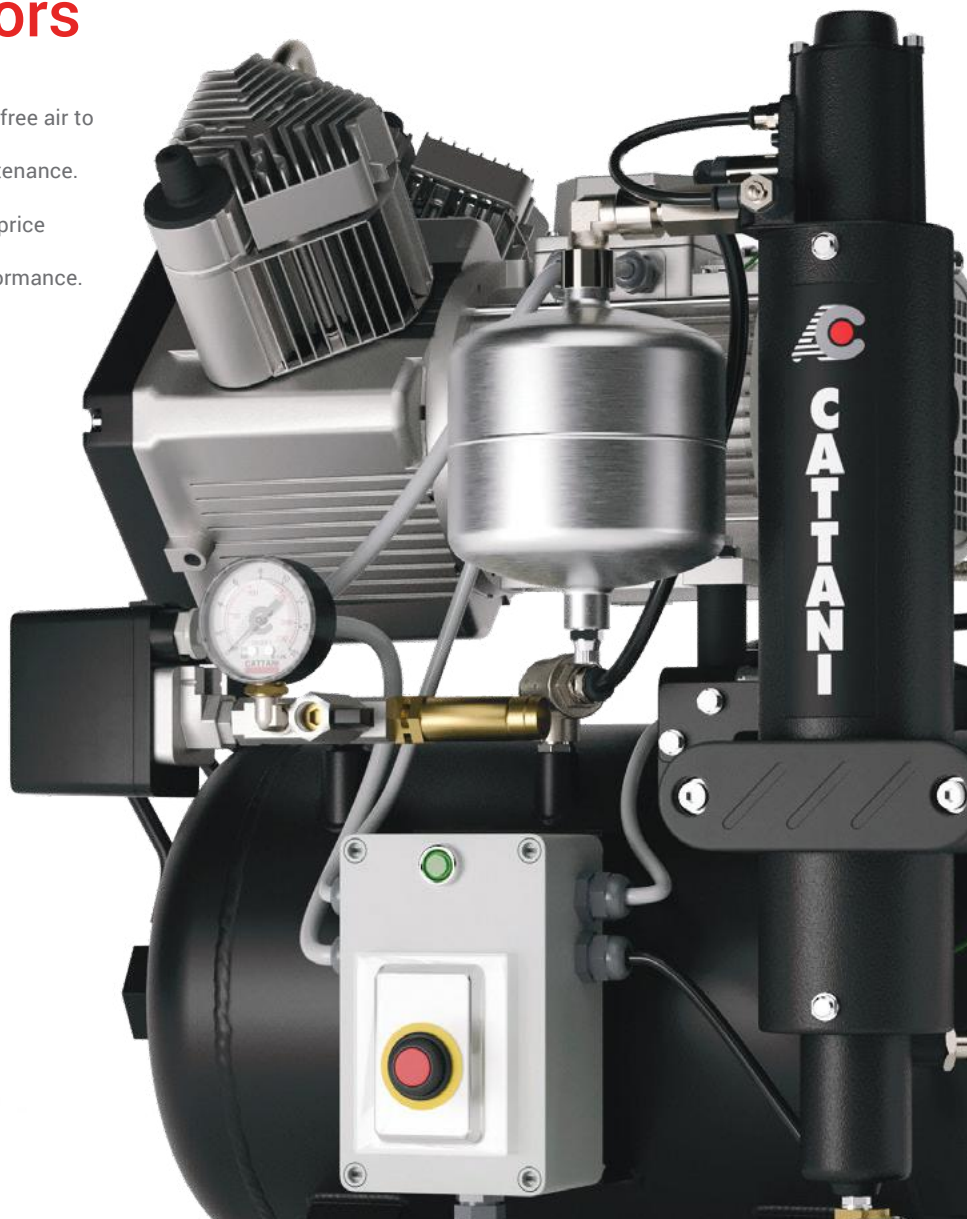
## Cattani Compressors

Quality air is essential in dental.  
That's why Cattani compressors deliver clean, dry, oil-free air to keep your practice running. Our compressors are incredibly reliable and low maintenance. Performance is a key factor in any purchase decision. When comparing brands, we encourage you to weigh price against air output (l/min at 5-bar pressure). Often a cheaper compressor comes with inferior performance. That's not Cattani.



## Cattani Suction

Cattani SMART Suction Systems use variable frequency inverter technology, also known as Variable Speed Drive (VSD), designed to provide consistent, high-performance suction while reducing energy costs.



**Dentium**  
For Dentists By Dentists

**silfradent**

**B&Medi**

**GOLNIT**  
a surgical  
culture  
company

**Geo**

**MEDIT**

**vatech**

**W&H**

**HULASER**  
SINCE 2002  
LASER SCIENCE FOR HUMANS

**GoodDrs**

**Penguin<sup>RFA</sup>**

**Dr.Kim<sup>AU</sup>**  
SHADOWLESS HEADLAMP

**VERICOM**

**OSUNG**  
OSUNG MEDICAL & DENTAL

**CATTANI**  
AIR TECHNOLOGY  
AUSTRALIA



Minimax Implant & Medical

# PRODUCT CATALOGUE

2023-24