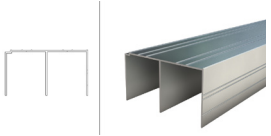







# HANGERS

## Accent Sliding Door Specification

Aluminium frame with a horizontal feature panel and recessed handle bottom rolling door available as glass panels with MFC panel insert and optional soft close




Identification	Item name	Material	Image	Description
1	Top Track	Aluminium		Single piece aluminium running guide
2	Top Rail	Aluminium		Aluminium door frame
3	Top Wheel	Steel/Plastic		Rubber free spinning wheel with steel back plate
4	Vertical Stile	Aluminium		Aluminium door frame
5	Door panel insert	Glass and MFC		4mm safety backed EN12600 mirror on lacquered glass with 8mm MFC PEFC certified horizontal panel
6	Bottom Rail	Aluminium		Aluminium door frame
7	Bottom Wheel	Steel/Plastic		Plastic ball bearing wheel with steel back plate and vertical adjustment
8	Bottom Track	Aluminium		Single piece aluminium running guide
9	H-sections joining bar	Aluminium		Aluminium section joiner bar

# HANGERS

## Handle Option Specification





Identification	Item name	Material	Image	Description
1	R200 Pull Handle	Aluminium		Recessed pull handle

# HANGERS

## Soft Close Specification



Identification	Item name	Material	Image	Description
1	Soft Close Activator	Steel		Soft close activator located in the top track
2	Soft Close Damper	Steel		Soft close main damper located on the door

# HANGERS

## Hangers@ Accent Specification and Maintenance

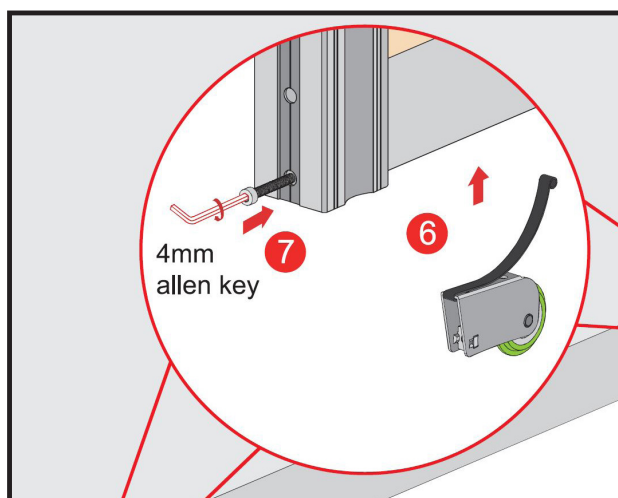
### General Description

Portico's Accent wardrobe aluminium door system consists of a top and bottom track, top and bottom rails and stiles (uprights). All doors are bottom rolling, and have either a top guide or top roller to steady the panel in the tracks.

All mirrored glass is safety backed in accordance with BS6206 Class B, and all wood grain panels are 8mm MFC.

### Door Adjustments

Use an Allen key to raise (clockwise) or lower (anti-clockwise) the roller via the access hole in the bottom of the door stile. Take load off wheels whilst adjusting doors so they are level and run clear of bottom track.



### Maintenance

Glass can be cleaned with any household glass cleaner. The tracks and frames can be cleaned with any silicone-based polish. This polish can also be used to lubricate the running gear periodically. Build-up of debris must not be allowed to form in the bottom track. Care must be taken to avoid interior overload and that stored items do not snag the back of the doors or sliding gear. DO NOT use any solvents on the Aluminium wardrobe range.

### Warranty

The wardrobe is covered by a 10-year warranty covering hardware and glass failure. Installation defects (this only applies to systems installed by Portico GB Limited) are covered for 2 years, with the following exclusions: Improper handling, Scratched glass, Broken glass, Any post installation panel adjustment due to settling including and soft close issues, Overloading of shelves and interiors, Impact from foreign objects, Acts of God. Any damage must be notified at time of installation in writing.

# HANGERS

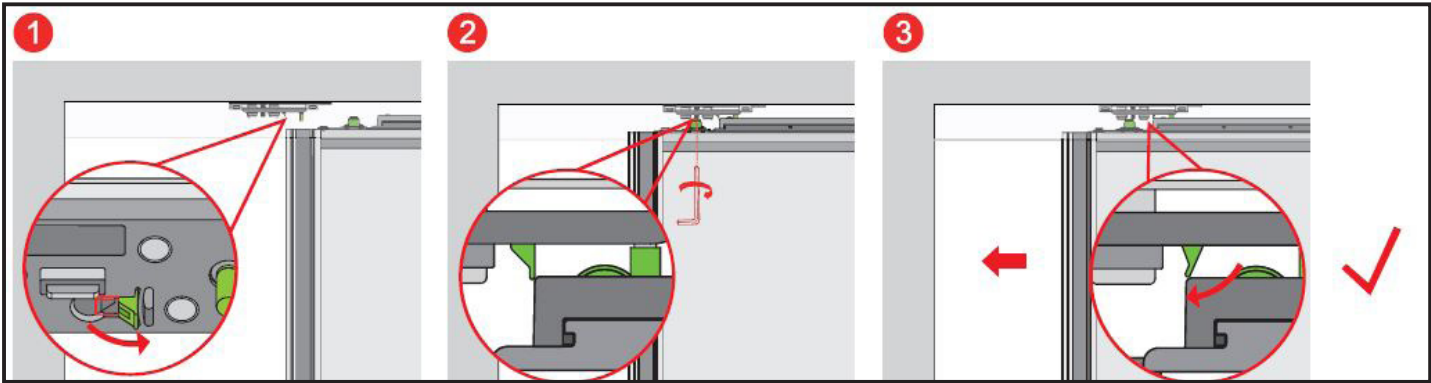
## Hangers@ Accent Specification and Maintenance

### Soft Close Mechanism

Please note that adjustments to the soft close mechanism are not covered by our warranty. The soft close will require re-engaging if a) the wardrobe doors are removed, or b) settlement of the building moves the doors out of alignment.

In order to re-engage the soft close mechanism the doors and/or soft close activator will need to be adjusted.

The soft close activator is located in the top track and features a guidance clip to confirm when the soft close mechanism is in the correct position. This can be seen in the image below. When the doors are in the correct position, upon sliding closed the guidance clip will produce a click sound when correct.



To remove a door, the bottom running wheels will need to be adjusted lower and therefore will disengage the soft close mechanism. Please see the door adjustments in how to raise the door up.

The soft close activator can also be adjusted up and down. In the case that the bottom running wheels have been fully adjusted to their maximum in height then the activator will need to be lowered accordingly.

Using a 2.5mm Allen key, turn the adjustment screw clock wise to lower the locating pin and anti-clockwise to raise the locating pin. The adjustment screw is shown in the image below.

