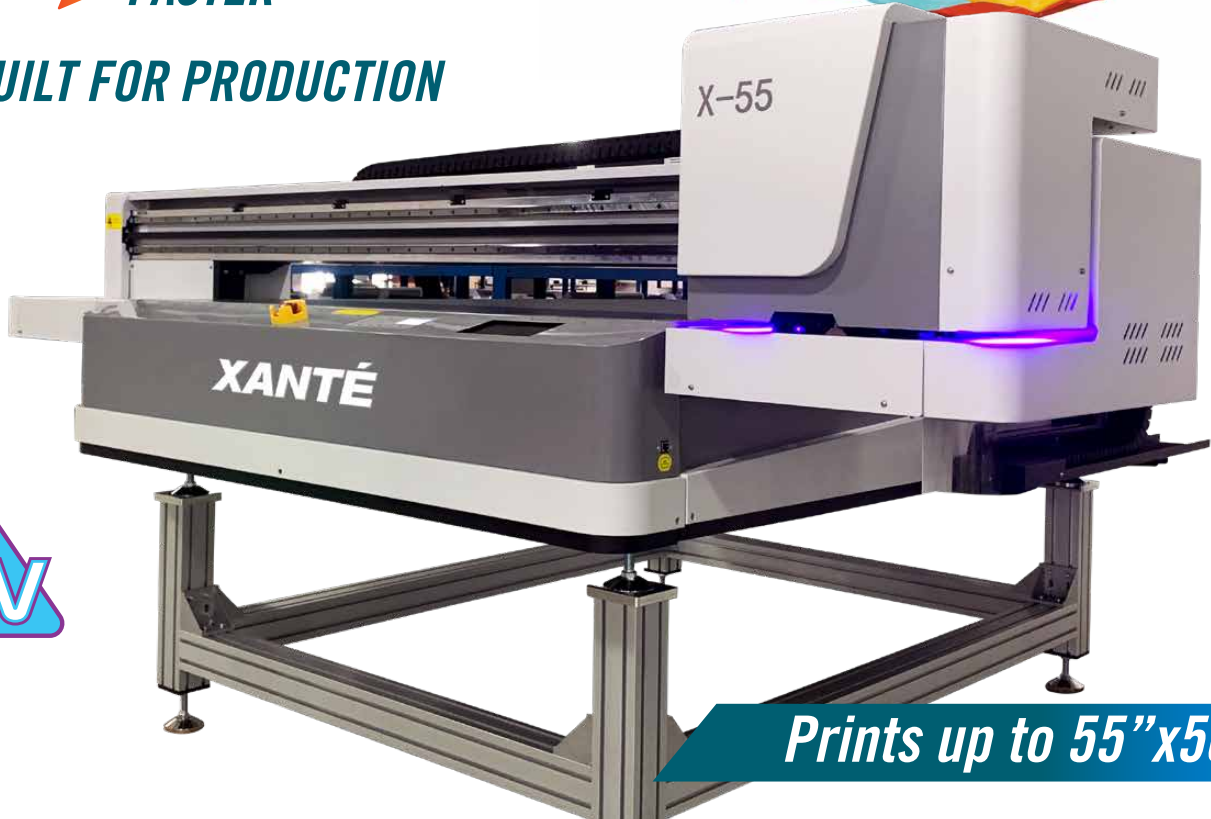


XANTÉ X-55™

- **BIGGER**
- **FASTER**
- **BUILT FOR PRODUCTION**



PRINT ON VIRTUALLY ANY MEDIA!

CMYK + WWWW

UP TO 2880 DPI RESOLUTION

PRINT ON MEDIA UP TO 3 INCHES TALL

DUAL LED LAMPS
(Instant Ink Curing)



US: 251.473.6502
EU: +31 (0) 26.319.3210
xante.com

BEST. EVER.

The X-UV Printer cannot be beat.

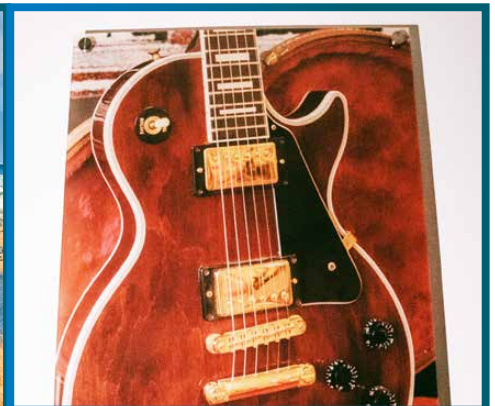
Large flatbed printers designed for signage and graphics print at high speeds, but are limited by substrate thickness.

Small format printers designed for specialty items print at slower speeds and are limited by substrate length and width.

*The Xanté family of X-UV Printers do **BOTH**.
It's the best of both worlds.*



Signage • Manufacturing • Specialty Items • Industrial



CONTACT US TODAY FOR MORE INFORMATION.

251.473.6502

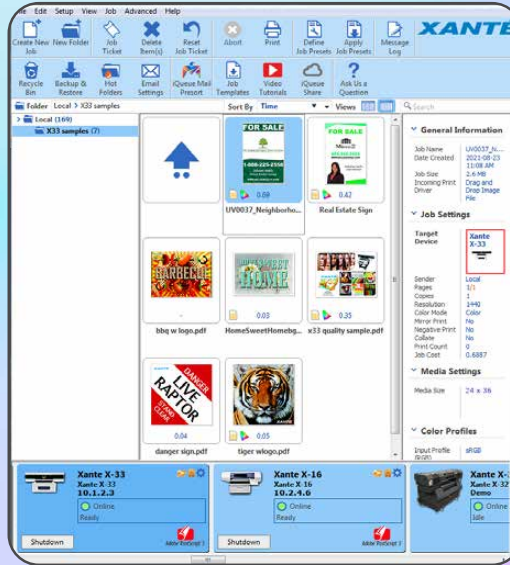
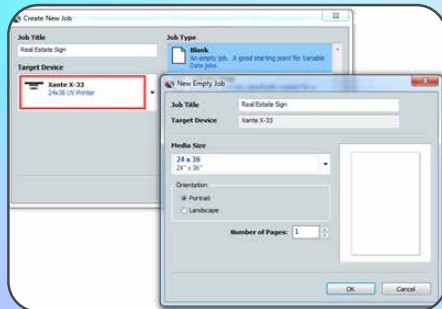


Simply Brilliant Color Workflow

Welcome to iQueue Prepress Software

Xante builds on its innovative workflow software with powerful team-based productivity in iQueue 14. True server-client operation enhances your workflow to optimize the talents and time of everyone involved in production. Take advantage of your entire team of IT

Create a new job or simply drag and drop your file into the queue.



iQueue features include:

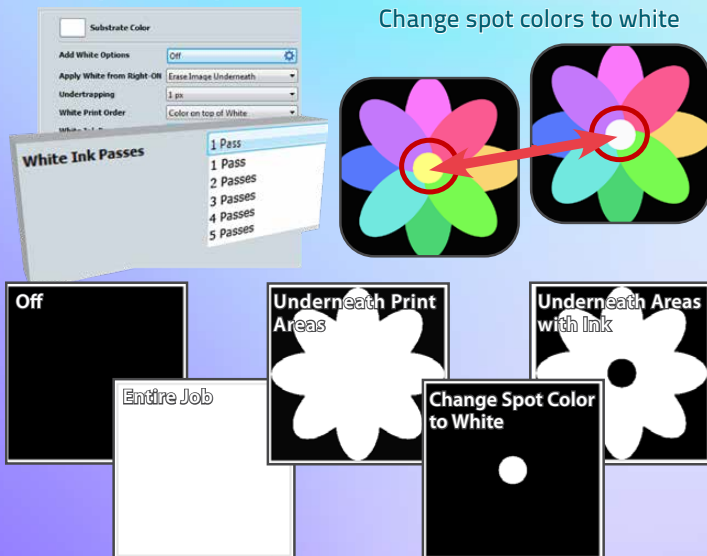
- Fully Independent CMYK Controls
- PANTONE® Color Library
- Right-ON® Spot Color Matching
- Full Imposition and Tiling
- QR Code Generator
- PDF-Out AND SO MUCH MORE!

specialists, designers, and printer operators to simplify prepress tasks such as job sharing and job cost estimating, file editing through tools, patented Right-ON® Spot Color Matching and much more. Create attention-grabbing displays with VividHD-UV ink. And, with instant curing, your customers will appreciate the fast, durable results.

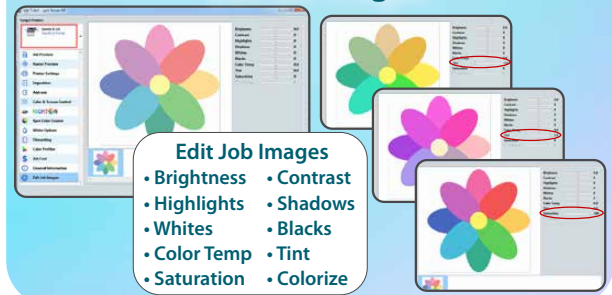
White Options

Build depth with layers of white

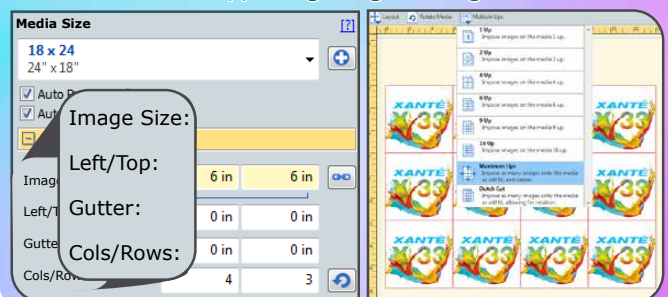
Change spot colors to white



Edit Job Images



Imposition allows you to optimize your page layout by placing images in the maximum number of columns and rows while also supporting margins and gutters.





SPECIFICATIONS



PRINTING CAPABILITIES

Imaging area:	55" x 50" (139.7cm x 127cm)
Max. media size:	55" x 50" (139.7cm x 127cm)
Min. media size:	.5" x .5"
Max. print height:	3" (7.62cm)
Print colors:	CMYK + WWWW
Resolution:	720/1080/1440/2160/2880 DPI Resolutions
UV lamp:	Dual LED, low heat curing lamps

INK AND MEDIA

Ink type:	UV, 500 mL bottles per color The maximum shelf life is 1 (one) year from Date of Manufacture (DoM). Once opened, the shelf life is 2 (two) months or 1 (one) year from DoM, whichever comes first.
Media types:	PVC plastic, styrene, wood, aluminum, metal, acrylics, coroplast, ceramics, fabric, leather composites, paperboard, foamboard, glass, carpet, tile and more

PRINTER CONNECTIVITY

1-Gigabit Ethernet

PREPRESS SOFTWARE

Xanté iQueue Workflow:	Adobe® PostScript® 3™/PDF Workflow, Independent CMYK Density Control, Spot Color Matching, Imposition, Digital File Editing, Variable Printing, and much more
-------------------------------	---

WEIGHTS, DIMENSIONS

Dimensions:	90"L x 90"W x 24"H (229 x 229 x 60cm)
Net/Gross weight:	950lbs (430.9kg)
Power supply:	110v or 220v 50-60hz

WORKING CONDITION

Operating temperature:	22-26°C (68°F - 78°F)
Relative humidity:	35-75RH

XANTÉ

US: 251.473.6502
EU: +31 (0) 26.319.3210

xante.com



Adobe® PostScript® 3™



**iQueue Simply Brilliant
Workflow (Included)**

Digital Color Workflow with Advanced Color
Matching and File Management Tools