

YOUR #1 SOURCE FOR DIGITAL PRINT FINISHING



Winter 2023 Issue

TECH REPORT

IN THIS ISSUE



**PRINTING UNITED REPORT:
SEE THE LATEST LAUNCHES**

**HOW TO GUIDE: LEARN HOW TO ADD
INSTAFOIL TO YOUR PRINT**

**MORGANA DIGIFOLD XL – MEET THE
KING OF THE CREASER FOLDERS**

YOUR GUIDE TO THE LATEST ADVANCES IN PRINT FINISHING TECHNOLOGY



Steve Bagnell, Neil Jones, Dave Tamminga stand by their new Matrix 530DP laminator.

CARRUTHERS PRINTING INSTALLS MATRIX 530DP | SMITHVILLE, ONTARIO

Carruthers Printing located in Smithville Ontario recently installed a Matrix 530DP double sided pneumatic laminator and foiling system. “The reason for purchasing the Matrix 530DP was to increase our production and efficiency. Our laminating speeds have increased about 3x from our previous laminator. It is a great addition to our finishing arsenal. We can always count on Sydney Stone to fill our needs.” Dave Tamminga President of Carruthers Printing.

Carruthers is a full print service provider offering design, print services including offset, digital, and large format established in 1954. They offer a complete range of printfinishing services including saddle stitching, coil binding, perfect binding, folding, laminating and foiling. Carruthers is able to print banners, blueprints, books, brochures, catalogues, publications, business cards, canvas prints and plaques, decals, labels, envelope printing, forms, laminating and foiling.

Sydney Stone is Canada’s exclusive dealer for the complete line of Matrix laminators and feeder solutions. ■



Kim, Miki, Sue and Sam receiving a Duplo DC-648

COBER UPGRADES TO A NEW DUPLO DC-648 | KITCHENER, ONTARIO

Cober Solutions recently installed a Duplo DC-648. With over 100 years in operations and one of Canada’s largest premier print manufactures Cober made the move to upgrade their existing DC-646 slitte cutter creaser to the new more productive Duplo DC-648. “The addition of The Duplo DC-648 has allowed us to build on our throughput capabilities just in time for peak season. One operator can easily operate 2 machines, and it allows us to handle an increased volume of “micro” orders including business cards, postcards and greeting cards in a multitude of sizes. The Duplo DC-648 frees up our guillotines to focus on larger jobs, and helps with the production of hundreds of daily automated same-day internet orders.” Sam Mueller Director of Manufacturing Cober Solution.

“Cober Solutions has always been a company driven to continue to innovate and automate. From the recent installation of a new Heidelberg Speedmaster XL 106, a new automated Muller Martini InfiniTrim line, and one of Canada’s largest Indigo installations. We are pleased to align ourselves with the Cober team in sourcing new efficiencies in their digital print finishing operations.” says Stephen Longmire, National Sales Manager Sydney Stone. ■



Michael Bell stand next to their new MOHR 66

BURKE PRINTING INSTALS NEW MORH 66 26.4” PAPER CUTTER | NAPANEE , ONTARIO

When it came time to look at a paper cutter replacement, Burke Printing owner Mike Bell visited Sydney Stone booth at Graphics Canada 2023. After reviewing his applications and power requirements, Mike decided on the smooth and powerful MOHR 66 26.4” paper cutter. The MOHR 66 offers the printer ultra reliable performance and is operated via an ergonomically arranged control panel with 5.5” monochrome display and extra low-profile keyboard. Repeat sequences can be saved in one of 198 available memory positions and even be adapted at any time making it ideal for a printers with common templates.

“ The Mohr 66 is a big step up over our previous paper cutter and gives us cut width and power to keep all our finishing in house “ Michael Bell

Burke Printing is a locally owned and operated full service Print design and copy center located in Napanee Ontario. Their mission is to establish Burke Printing as the premier provider of the finest printing in our region of eastern Ontario, while maintaining our uncompromising principles of good service and community development. ■



Jeff Thurlby stand next to their new Morgana SC 6000

PRINT FUSION INSTALS NEW SC 6000 DIE CUTTER | KINGSTON, ONTARIO

Jeff Thurlby’s dream of being able to produce on demand short run packaging became reality when his new Morgana SC 6000 arrived. This revolutionary ‘on demand’ digital die cutter has no physical dies or time-consuming setup costs. Perfect for digitally die-cutting packaging, P.O.S. and lightweight card projects – as well as kiss-cutting sheet labels. Targeted for busy print departments, seeking an affordable, highcapacity device for complete unattended cutting production. The SC6000 combines ultra-reliable feeding with an instant job retrieval system and flawless high-speed cutting and creasing. This compact free-standing device is conveniently mobile and will be easily accommodated in any print shop.

“Being located in Kingston, I want to be able to service my customers on a true on demand basis. The SC 6000 has allowed me to offer short run digital packaging as well as fast label cutting without having to outsource – it has been a game changer” says owner Jeff Thurlby.

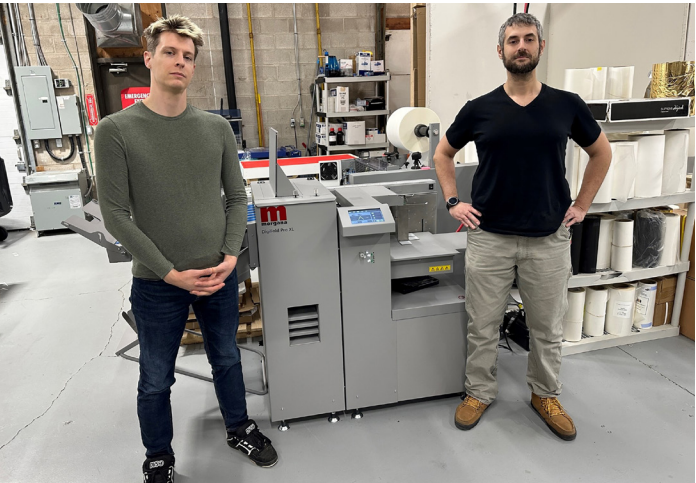
With over a century of combined experience, the PrintFusion team is the unquestioned first choice for your professional printing needs. ■



SYDNEY STONE MOHR Service School | MISSISSAUGA, ONTARIO

Sydney Stone is the official North American distributor for the MOHR range of paper cutters. From November 7 to 9th, Sydney Stone hosted a service school for it’s North American dealers and service agents. Technical staff came from across North American to be fully training in the operation, maintenance and repair of the MOHR range of hydraulic paper cutters. The course was conducted by long time Technical service instructor Ingmar Frassmann who travelled from the factory in Hofheim Germany. “Selling MOHR paper cutters is only one piece of the puzzle” commented MOHR dealer manager Michael Steele. “Having our own staff as well as our dealers fully training means that customers have confidence in the MOHR brand.”

Adolf Mohr Maschinenfabrik was founded in 1906 and a few years later started marketing its products under the brand name POLAR and MOHR. In 1946 Karl and Rudolf, sons of the company founder Adolf Mohr, started specializing in the construction of cutting machines for the paper processing industry. ■



David Razi and Robin Hughes stand by their DigiFold Pro XL

PRINT PANTHER INSTALLS MORGANA DIGIFOLD PRO XL | OAKVILLE, ONTARIO

The DigiFold Pro XL is the latest addition to Print Panther’s family of finishing equipment. The XL unit incorporates a suction feeder that handles stock in sizes from 8.3” up to 51” in length. Print Panther co-owner Alan Dryburgh comments “ The Pro XL fits perfectly with the long-sheet capabilities of our production printers which really opens the door to us being able to produce landscape and other oversized products quickly and accurately in house”.

This unit incorporates a top-fed vacuum feeder on the new Digifold XL ensures stable production for long runs. Morgana’s user-friendly operator panel allows for the simple input of sheet size, media type, and thickness. With this information the Pro XL can automatically set the speed, roller gap, and fan settings automically. Print Panther Direct is a full service digital printing agency who live and breathe print & design. From creating custom cutting-edge visual concepts that inspire and inform, to printing beautiful brochures, they do it all. ■

The Sydney Stone team visited the Printing United Expo held in Atlanta, Georgia from October 18 -20, 2023. The three-day event provided the opportunity for attendees and exhibitors alike to reunite and reconnect, share ideas, network, and learn about the very latest technology that the print and printfinishing industry has to offer.

Our team scoured the show for the very best in new equipment and supplies that were launched, and we're pleased to share our findings with you!



Sydney Stone's Pick for Top New Supplies Launch

Multiloft Launches Elements Terravellum Sheets

MultiLoft® Elements™ TerraVellum™ Sheets are made with 100% recycled, post-consumer waste paper. As part of Convertible Solutions' ongoing efforts to create a more eco-conscious printing industry, they have pledged to plant one tree for every carton of MultiLoft® Elements™ TerraVellum™ sold!



Sydney Stone's Picks for Top New Equipment Launches

700i Booklet System

Trimmer integrate the stitcher, folder, & face trimmer into one



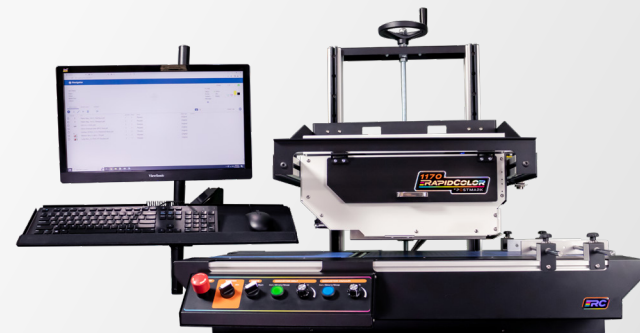
With the fully automated 700i Digital Booklet System, the DBM-700/T Bookletmaker and Trimmer integrate the stitcher, folder, and face trimmer into one. The DSF-2200 Sheet Feeder provides an upper and lower bin with air suction feed technology and front/side air separation for reliable performance. Both bins can be used to feed the cover and inner sheets or to feed covers separately.

It offers full-bleed trimming and square spine options with the capability to produce 50-sheet booklets. Suitable for mid-volume productions, the 700i delivers a variety of applications with automated precision on demand up to 3,272 booklets per hour.

- Automated job set up and changeovers
- Processes 4-stitch booklets with 2 stitch heads
- Three-knife trimming and 8mm Gutter Cutter option for 2-up finishing with DKTS-200 Two Knife Trimmer

Postmark 1170 Rapidcolor

The 1170 printer, Xitron Navigator software



The new 1170 Rapid Colour by PostMark comes in 3 configurations, Mobile, Core, and the PRO model. All 3 systems come with the 1170 printer, Xitron Navigator software, and computer, monitor, keyboard, and mouse. The MOBILE comes complete with a mobile stand for easy installment with pre-existing setups. The CORE comes with the printer and conveyor for hand-fed short to medium runs.

The PRO comes with all of the above features but also with multiple feeder options for different applications and a delivery conveyor to organize the finished pieces. Whatever your printing need, the 1170 RapidColor line has the right solution for you! Whether it's envelopes, bags, boxes, napkins or more, the line of versatile 1170 RapidColor Print Solutions are ready to provide you with high-speed, high-quality, four-color inkjet printing!

ColorCut T-SERIES FB1180T

Flatbed cutter creaser for packaging, point of sale, and labels



This flat bed digital die cutter includes a Quad Tool Head featuring both drag/swivel and tangential functionalities. Flatbed Cutting Table Type of cut Die-Cut (Full Cut), Half Cut (Kiss-cut) & Perf Crease capability Yes - Crease - 1,500gf pressure Cutting force 1,200gf Maximum media area 33.8 x 46.4" Maximum cut and crease area 26 x x 40.1" Maximum cutting depth 0.118" Speed settings High Definition / Standard / Fast Maximum cutting speed 750/960/1,200mm per second Registration system High speed - Vision3 CCD camera using 8th Generation ARMS technology Job recognition Advanced QR code for instant job recognition.

- Quad tool head
- Choice of operation modes
- Tangential cutting capable
- Advanced QR code for instant job recognition and registration

The Brand New F-24 Direct To Film Printer

Highly compact, saving storage space



This direct transfer film printer is highly compact, saving storage space and transportation costs. It has a high print resolution, which produces sharp and detailed images. Discover a cost-effective, high-quality, and versatile solution for creating customized and personalized products. Printing images up to 24" wide at 2400 DPI resolution direct to film in CMYK+W. This transfers to virtually any fabric. Working with the included iQueue software it has features which include:

- Independent CMYK Density Controls
- PANTONE® Color Library
- Right-ON® Spot Color Matching
- QR Code Generator
- Full Imposition and Tiling
- SO MUCH MORE!

Probably the world's most affordable digital cutters.
Which one is right for you?



SC6500

Auto-Feed Digital Die-Cutting & Creasing

Perfect for digitally die-cutting packaging, P.O.S. & lightweight card projects – as well as kiss-cutting sheet labels – the all new ColorCut SC6500 is a compact 'on demand' digital sheet cutter with no physical dies or time-consuming setup costs.

Further more, ColorCut Pro enables your jobs to be exported to a USB stick for cutting in a Held Mode (or at a remote location), so any operator can run their jobs directly from a USB drive no PC connection required! Simply wheel the cutter to any point of your production environment, plug in to a mains outlet, load with media, insert your USB stick and click SCAN on the 7" touch screen to begin!



Key Specifications

Sheet Size: 13.38" x 27.9" + custom
Sheet Weight: Up to 280gsm/350 micron
Job types: Die cut, kiss cut, crease, & perf
Speed: Up to 41.73"/second
Feed type: Automatic
Feed Capacity: 1000x 80gsm sheets
Software: ColorCut Pro

Features highly efficient, ultra-low energy consumption.
Two operation modes: DIRECT and HELD modes

DIRECT mode: Use ColorCut Pro to create your cut files & cut directly.

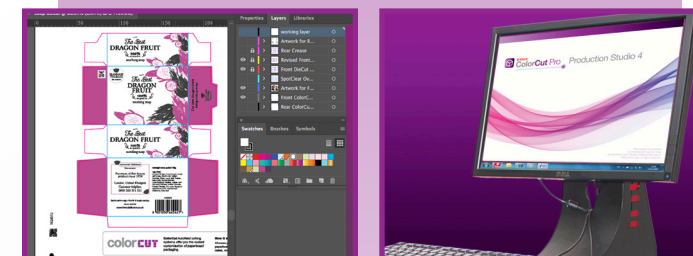


FB1180T

B1 Tangential Digital-Die Flatbed Cutter/Creaser

Superfast B1 flatbed cutter including 4 tools, both contour cutting tools and active tangential tools. The FB1180-T is precise enough to cut labels yet its amazing 4 tool selection provides users with the option to switch to high force cut and crease for thick N/E/F flute media, and a diverse range of media in-between.

Perfect for on demand prototype pieces to light production runs of two and three dimensional items, the FB1180-T flatbed cutting table can cut and crease virtually any form of print, from sample packaging, to high-end products, protective cartons or synthetic point-of-sale items and kiss-cut adhesive labels. The FB1180-T with combined marketleading ColorCut Pro software, brings many advanced features to aid design and production.



Key Specifications

Sheet Size: 33.8" x 46.4"
Max Cut & Crease Area: 26." X 40.1"
Job types: Die cut, kiss cut, crease, & perf
Speed: 750 /960 /1200 mm/ second
Software: ColorCut Pro
High speed: Vision3 CCD camera using 8th Generation ARMS technology

Includes two passive contour tools for fast cutting, and two active tangential tools enabling production on thick media.

Run jobs from PC, using the supplied and acclaimed ColorCut Pro 5 software, or process jobs from internally stored files or a USB Drive.



Reconditioned Equipment



CERTIFIED SERIES MACHINES NOW AVAILABLE

Sydney Stone takes pride in its high level of machine reconditioning and offers a standard reconditioned equipment warranty of 100 days parts and labour. Machines that qualify as one of our "Certified Series" pieces of equipment automatically include our 1 year, 5-Star Extended Maintenance Agreement at no additional charge. The 5-Star EMA includes a comprehensive one-year parts and labour warranty and two on-site preventative maintenance calls* to ensure your equipment is always working at its peak. At the end of the included 1 year, 5 Star EMA, you will be offered to renew this agreement at an affordable annual or monthly rate to ensure your investment remains fully protected in the future.



Certified Series 2017 EBA 5560 LT
Was: \$15,495 **NOW: \$14,995**
21.7" Hydraulic cutter with air table



Challenge EH 3C Paper Drill
Was: \$6,995 **NOW: \$6,495**
Factory rebuilt by challenge



Mohr 66 ECO 26.4" Hydraulic Paper Cutter
Was: \$27,500 **NOW: \$24,995**
Like new 2020 machine - 3 phase



Horizon BQ 160 PUR Perfect Binder
Was: \$19,995 **NOW: \$18,995**
PUR provides superior bind strength



Morgana BM 60 Bookletmaker With 104 Squarefold
Was: \$11,495 **NOW: \$10,995**
22 Flat Sheet stitch and fold with square fold unit (88 pages)



Morgana Major Air Feed Folder
Was: \$8,995 **NOW: \$7,995**
14" x 20" includes perforation



Plockmatic PL 104 Squarefold Unit
Was: \$5,995 **NOW: \$5,495**
Hand Feed or run in line w/ bookletmaker



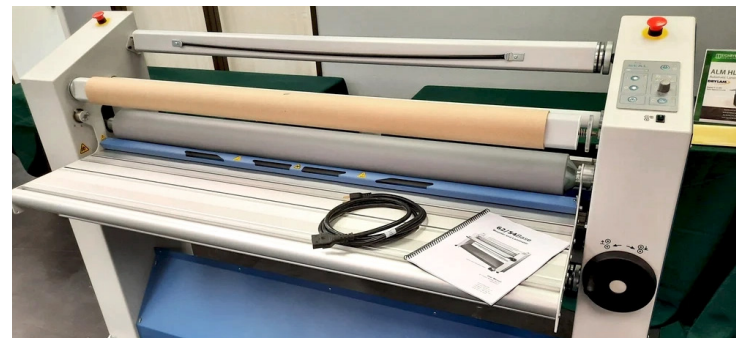
Show Demonstrator Xante Enpress With Enterprise Feeder, Stand & Conveyor
Was: \$22,000 **NOW: \$19,995**
Save thousands over a new machine and get into 4800 DPI envelope production today



Challenge Paddy Wagon
Was: \$995 **NOW: \$895**
3" of padding paper capacity / super clean



Morgana Digicreaser With Base
Was: \$5,495 **NOW: \$4,995**
Semi Automatic / Programmable



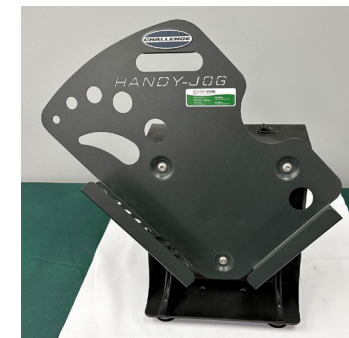
Reconditioned (2018) Seal Base 54 Laminator | Like New
Was: \$9,995 **NOW: \$8,995**
55" wide mounting laminator that includes heat assisted roller and 2" nip opening



Morgana Digifold Pro Creaser/Folder
Was: \$21,500 **NOW: \$19,995**
Crease and fold up to 6000sph/400gsm; 7" SmartScreen and memory to store common jobs



Morgana Electrocreaser 36
Was: \$1,895 **NOW: \$1,695**
14" Crease with foot pedal



Challenge Handy Jog
Was: \$450 **NOW: \$395**
Large Tray version (11 x 17)



Challenge Handy Padder
Was: \$450 **NOW: \$395**
16" of table top padding



Rapid 106E Stapler
Was: \$695 **NOW: \$650**
Flat and Saddle stitch



Challenge 185A 18.5" Paper Cutter
Was: \$3,995 **NOW: \$3,495**
Digital readout with safety cover



EBA 551 21.7" Hydraulic Paper Cutter
Was: \$9,995 **NOW: \$8,495**
Amazing 4200 PSI of clamping pressure



Morgana BM 350 Bookletmaking System - 35 Flat Sheet Capacity (140 pages)
Was: \$34,995 **NOW: \$29,995**
Includes AF602 Set Feeder, BM 350 Bookletmaker, face trimmer and Square fold



Creasestream Mini Quickfeed Table Top Creasing Machine
Was: \$4,250 **NOW: \$3,995**
Includes two creasing collars with rings to crease stock from 100 to 350 GSM



Flexipunch Package w/ 4:1 Coil, 3:1 Wire & Cerlox Dies
Was: \$1,995 **NOW: \$1,750**
Includes Flexipunch-E, 4:1 Coil die, 3:1 Wire die and Cerlox die

RECONDITIONED EQUIPMENT WON'T LAST LONG - CONTACT US TODAY! 1-800-668-6055 or SALES@PRINTFINISHING.COM

(*) Subject to geographic restrictions - please inquire for details.

Foil & Lamination



LAMINATE COMES IN A WIDE VARIETY OF TYPES, SIZES AND FINISHES, AND SYDNEY STONE IS YOUR #1 SOURCE FOR EVERYTHING YOU NEED FOR ALL OF YOUR LAMINATED APPLICATIONS.

TYPES OF LAMINATE: PET vs OPP

PET film is a traditional, rigid laminate that must be applied to both sides of a sheet to avoid curling. PET is typically used in high-touch applications such as placemats, menus and placards.

OPP film is softer and more pliable than PET film, and can be applied to only one side of the sheet. OPP is typically used in sensory applications such as packaging, invitations and business cards.

VARIETY OF SIZES: STANDARD + CUSTOM

PET Films come in standard widths and lengths, and can be ordered in custom sizes for any application.

OPP Films come in widths that are 1/4" less than standard. These narrower rolls allow users to take advantage of the "burstable" nature of the film, leaving no overhang, so the finished sheets are ready for further finishing or trimming. OPP films can also be ordered in custom sizes for any application.

DIFFERENT FINISHES

Gloss | OPP, PET
High-shine finish.

Matte | OPP, PET
Eggshell finish.

Scuff-Free: | OPP
Scratch-resistant finish.

Soft Touch | OPP
Velvety, peach-skin-like finish; ideal for overprinting.

HAVE QUESTIONS?

Contact Pawan if you are quoting on a project or need to discuss your pricing on supplies!

T 905 673 9641 x.107 | E pawan@printfinishing.com



OPP SOFT TOUCH LAMINATE + INSTAFOIL

OPP Soft Touch laminate is unique from other OPP films in many ways. The film has excellent contact clarity, and can actually enhance the vibrance of the printed piece's original colours, making it a perfect choice for almost any laminate application. It has an incredible combination of a velvety, peach-skin-like texture, combined with superior bonding strength due to the special digital adhesive.

Another important reason why Soft Touch stands out from other films is its "dyne level," which is higher than other films. This high dyne level makes it easier for digital toner, offset inks, spot UV, hot stamp foil and glues to better adhere to the laminated surface. That ability makes Soft Touch the ideal laminating film for applications that require further finishing or overprinting.

One such application is **Instafoil**, Sydney Stone's signature sleeking foil. Instafoil is manufactured in Canada and is a highly resilient foil, ideal for even high-touch applications such as menus or packaging. Instafoil is an easy way to add value to your print projects, with no special dies or equipment required beyond your print device and a hot roll laminator with individual roll temperature control (such as the **Instafoiler18**, pictured right). **There are two methods to apply Instafoil:**



The Instafoiler18 dual-sided hot & cold laminator is perfect for foiling, lamination and mounting.

INSTAFOIL - TRADITIONAL METHOD

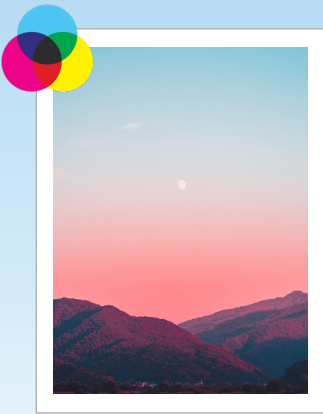
Print the design you want foiled in 100% black toner



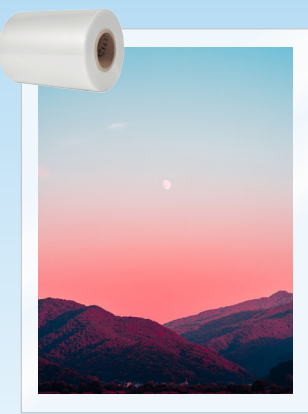
Use your laminator to apply **Instafoil**. The foil only adheres to the exposed toner



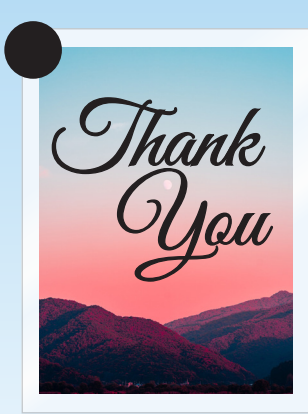
INSTAFOIL - ISOLATION METHOD



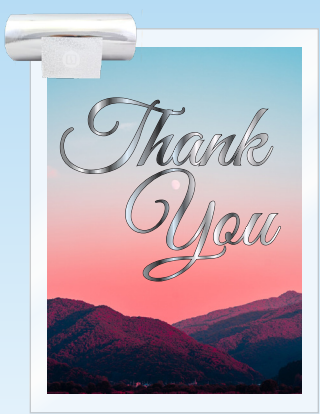
Print background graphics



Laminate with OPP Soft Touch lamination film



Overprint the design you want foiled in 100% black toner



Use your laminator to apply **Instafoil** - foil only adheres to the exposed toner



Morgana Systems has led the way in developing new and innovative solutions to cope with the special requirements of the digital printer since the launch of the revolutionary AutoCreaser in 2000. Since its acquisition by Plockmatic in 2013 the product portfolio has been extended with a wide range of booklet making systems to meet every production requirement.

XL Series | Autocreaser Pro XL & Digifold Pro XL



Scan To
Watch The
Video



Autocreaser Pro XL

- Edge registered vacuum top feeder with an outstanding load capacity of 7.8"
- New sheet separation controlled by optical sensor array – automatically adapts to different media, weights and types
- Automatic feeding parameter selection based on paper size and thickness – simplifies set up regardless of operator skill
- Table extendible up to 51" to support popular longer sheet applications
- Powerful creasing unit can accept standard and narrow creasing blades as well as optional cross perforation blades
- Simplified adjustments and blade changeovers without special tools
- Inline rotary perforation, up to five at the same time
- Optional cross perforation unit available

The easy to use AutoCreaser Pro XL paper creasing system with ultrasonic double sheet detection has a cost efficient vacuum top feeder and a unique creasing rule to eliminate paper tearing and cracking.



Scan To
Watch The
Video



Digifold Pro XL

- Folds up to 6,000 A4 per hour / crease only – 7,500 per hour
- Max loading capacity up to 7.9"
- Suction feeder that handles stock sizes from 8.3" – 51" in length
- Top fed vacuum feeder, ensures stable production for long runs.
- Fully automatic operator functions. Key in sheet size, media type and thickness and the Pro XL will automatically set speed, roller gap and fan settings.
- A unique air knife system for sheet separation.
- Full cross perforation available
- Up to 30 creases per sheet (static crease)
- Equipped with both a belt-stacker for folded sheets and a delivery tray for crease only jobs.

The Digifold Pro XL is a heavy-duty automatic creasing and folding system is designed to complement mid to high volume digital and offset production presses.

BM4000 Bookletmaker Series

Heralded as a new kind of bookletmaker, the Morgana BM4000 Series Bookletmakers can produce both A4 landscape and 11" x 11" booklets, and offers both corner and edge stapling as standard, plus the option of the unique SquareBack finish. In a completely new design, the combined square folding and face trimming unit has been produced in a single compact module.



- Staple and fold booklets of up to 140 pages (BM4035) or 200 pages (BM4050)
- Feed long printed sheets to produce a wide variety of work, including the A4 landscape format
- From A6 size booklets up to A4 landscape, and the 11" x 11" format
- Designed to work with low to mid volume digital production printers
- Produce corner stapled and edge stapled documents along with regular spine stapling

Heavy Duty Stapling

The heavy-duty staple mechanism designed for durability, and is maintenance free thanks to a patented solution that eliminates periodic service intervals. With its adjustable staple and fold position the BM4000 series has a patented "set positioning mechanism". This allows the operator to adjust the staple position in the direction of travel via the intuitive user interface.

Combined Square Folding + Face Trimming

In a completely new design, the combined square folding and face trimming unit has been produced in a single compact module. High performance quality square folding functionality ensures a high-quality booklet on a wide range of media and booklet thickness.

Vacuum Feeder

The Morgana VFX is a two-tray high-capacity Vacuum Feeder, capable of efficiently feeding a wide range of paper types, and weights, with sheets up to 26". The Automatic Tray Switching feature enables long unattended runs, and enables the loading of empty trays during a run to achieve maximum productivity.

High-Capacity Belt Stacker

The high-capacity belt stacker is a practical option for more production-oriented sites. It can be configured straight or in a 90-degree angle, and attaches after the standard output tray. This allows for long unattended runs and stacks up to 1,000x A4 booklets of four pages.



Operators are led through job setup via the ultra-clear 7" colour graphical user interface. The touchscreen navigation provides detailed graphics that provide step-by-step guidance for easy job setup and adjustment of applications.

Scan To
Watch The
Video



The excellence of Italian engineering in digital flatbed cutting.

For over 45 years, Valiani has been building reliable digital flatbed plotters to meet the requirements of a variety of markets and production volumes. Valiani flatbed cutters have been carefully designed to cut many types of materials with extreme precision, with a research and development department that is constantly working towards creating new technology to increase the productivity and efficiency of their cutting machines.



Sydney Stone is your exclusive source for Valiani products in Canada.

Contact us today to discuss your applications and determine which model of Valiani digital die cutters are right for you.

Optima Series

DUAL-HEAD DIE-CUTTING MACHINE

- Cutting, creasing, drawing, kiss-cutting, v-cutting
- Operator friendly, ideal to be combined with flatbed printers
- From short to medium runs
- Cuts up to 20 mm in thickness
- Registration crop mark detecting system

V Series - 48.5" bed width
V80 32" | V160 64" | V250 96"

XL Series - 63" bed width
200XL 64" | 300XL 96"

Optima series is a digital cutting machine designed for the printing and packaging industry, with the aim to manage complex die cutting processes. It's the perfect digital cutting machine that does a bit of everything. Strength, versatility and a wide range of tools allows you to do large range of projects and give you additional capabilities that you can offer to your customer.



Omnia Series

AUTOFEED DIE CUTTING MACHINE

- Automatic and really independent workflow – 24/7
- Perfect cutting and creasing on a wide range of media up to 12 mm
- QR Code reader
- 20-cm capacity feeder, conveyor belt and catch tray
- From A4 to B1 format

Omnia 80
up to 23.6" x 31.5"

Omnia 100
up to 29.5" x 41.3"

Omnia has been designed to automatically feed and contour cut media. Media is fed to the cutting arm using a suction system that lifts media from the 500-sheet feeder and drags it onto the conveyor. Once in position, the camera will detect crop marks and execute the cut file for the pre-printed graphics, and the completed sheets drop into the catch tray.



Integra Series

MILLING, CUTTING AND CREASING IN A SINGLE SOLUTION

- Milling, Cutting, Creasing, Kiss cutting, V-Cutting
- Effective on acrylic, Alu-dibond composite, and thick PVC forex
- Compatible with flatbed printers
- From small to large formats
- Equippable with a 1 KW router

160
48.5" x 64"

200
64" x 81"

250
48.5" x 96"

300
64" x 121"

Integra is a digital cutting system designed for the signage and packaging industry that aims to manage complex die-cutting processes. Thanks to the ability to mount a 1 KW router along with other cutting and creasing tools, Integra can process very rigid substrates and high thicknesses.



Blade Change Program



IS A DULL KNIFE CUTTING DOWN ON YOUR PRODUCTIVITY?

After your print device, your paper cutter is the most important piece of equipment in your shop. Keep it cutting smoothly with a Sydney Stone Blade Change Program.

Our Blade Change Programs include:

- ✓ Remove and replace dull knife with sharp knife
- ✓ Squaring and recalibration of backgauge
- ✓ Lubrication of the cutter
- ✓ Rotation/replacement of cutting stick
- ✓ Transportation, sharpening and storage of dull knife

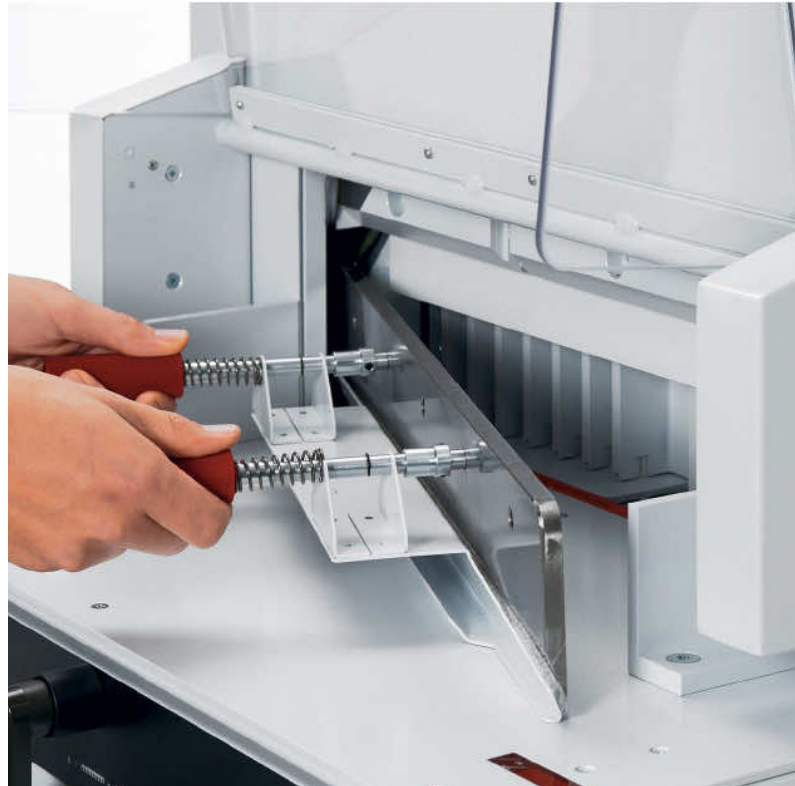
Choose the program to best suit your needs:

Bi-Weekly | 1 visit every 2 weeks

Monthly | 1 visit every 1 month

Bi-Monthly | 1 visit every 2 months

Quarterly | 1 visit every 4 months



Akinyemi Fakomi Service Technician



Akinyemi Fakomi started at Sydney Stone in 2022 and has become an invaluable member of the service team. His favourite equipment to work

on are the Duplo range of slit cutter creasers because they are so user friendly, and customers are amazed at their capabilities. Akinyemi loves the comradery of the service team and his favourite moment from this past year was running demos on the Sydney Stone tradeshow booth at Graphics Canada 2023. In his spare time Yemo enjoys going to the gym and Anime.

Favourite Colour
Navy Blue

Favourite TV Show
Breaking Bad

Favourite Movie
Inside Man

Favourite Animal
Elephant

Favourite Food
Pasta

Favourite Band
Ransom

Favourite Quote
"The weak can never forgive. Forgiveness is the attribute of the strong."
Mahatma Gandhi

MEET
THE
TEAM

SAVE 25%

ON GALLERY WRAP SUPPLIES

with coupon code

WRAPIT25TR

Valid for phone and online orders until
December 31st, 2023.
Some exceptions may apply.

