

STUDIO BOTANICA

Catalog 2024



Handmade – with passion and care



We are Lucas Thompson and Silvio Hochuli – two friends with a shared passion for handmade furniture and interior design. With backgrounds in design, we are passionate about combining craftsmanship, art, nature, and aesthetics with traditional Indian woodworking. Studio Botanica was founded with a vision in mind: to bring together like-minded people who are fascinated by the design of everyday objects and the stories of how they came to be.

We look forward sharing our journey and the colorful stories along the way with you.

Lucas & Silvio

Collection

Our products include re-editions from the Chandigarh Collection designed by Pierre Jeanneret in the 1950s. Each piece is carefully made by hand and is available in different wood finishes and cane weave options. Delivery times are from 6-8 weeks. Prices are available upon request.

Pierre Jeanneret Kangaroo Chair

PJ/101

Dimensions

W: 53 cm
D: 75 cm
H: 61 cm
Seat Height: 36 cm



Pierre Jeanneret Office Floating Back Chair

PJ/102

Dimensions

W: 51 cm
D: 56 cm
H: 79 cm
Seat Height: 45 cm



Pierre Jeanneret Easy Chair

PJ/103

Dimensions

W: 53 cm
D: 72 cm
H: 76 cm
Seat Height: 36 cm



Pierre Jeanneret Office King Chair

PJ/104

Dimensions

W: 51 cm
D: 60 cm
H: 84 cm
Seat Height: 46 cm



Pierre Jeanneret Box Chair

PJ/105

Dimensions

W: 51 cm
D: 56 cm
H: 79 cm
Seat Height: 43 cm



Pierre Jeanneret Armless Box Chair

PJ/106

Dimensions

W: 42.5 cm
D: 48 cm
H: 77 cm
Seat Height: 43 cm



Pierre Jeanneret Library Chair

PJ/107

Dimensions

W: 47 cm
D: 47 cm
H: 78 cm
Seat Height: 46 cm



Pierre Jeanneret Student Chair

PJ/108

Dimensions

W: 41 cm
D: 50 cm
H: 80 cm
Seat Height: 43 cm



Pierre Jeanneret Bench

PJ/110

Dimensions

W: 137 cm
D: 46 cm
H: 41 cm
Seat Height: 41 cm



Pierre Jeanneret Laundry Box

PJ/132

Dimensions

W: 72 cm
D: 47 cm
H: 43.5 cm



Pierre Jeanneret Caned Stool

PJ/135

Dimensions

W: 38.5 cm
D: 38.5 cm
H: 69 cm
Seat Height: 69 cm



Pierre Jeanneret Footstool

PJ/139

Dimensions

W: 39.5 cm
D: 32 cm
H: 42 cm
Seat Height: 42 cm



Pierre Jeanneret Magazine Rack

PJ/144

Dimensions

W: 94 cm
D: 38 cm
H: 68.5 cm



Pierre Jeanneret Seating Pad

Dimensions

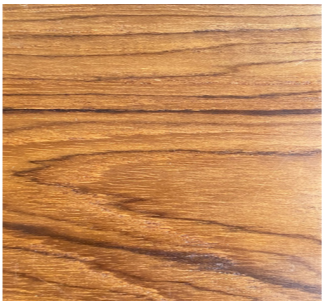
Small: 45 x 45 cm (Office Chair)
Large: 47 x 47 cm (Easy Chair)





Wood Finish Options

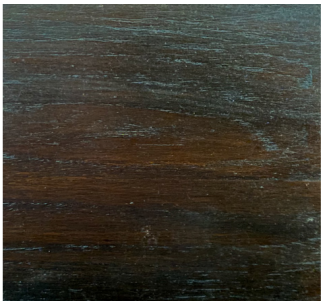
All of our products are available in ten different wood finish options. Each option adds its own unique look and feel to the furniture and accents the aged teakwood's grains. We make our furniture from aged teak (*Tectona grandis*) and apply a natural wood finish. We're happy to assist you with choosing the right color and provide physical samples on request.



Natural Teak
WF01



Teak Light
WF02



Teak Dark
WF03



Charcoal
WF04



Bleached
WF05



Aged Light
WF06



Aged Dark
WF07



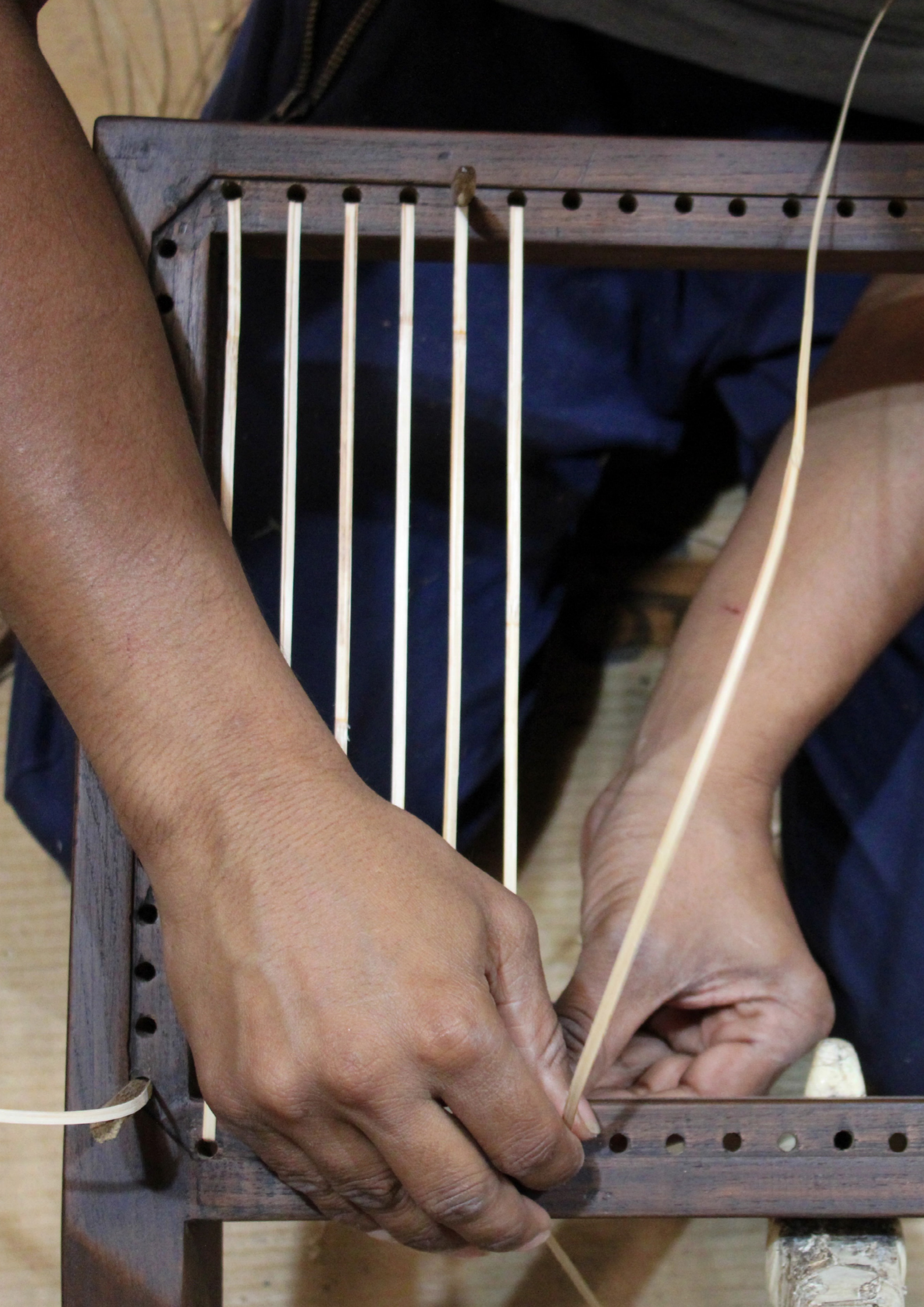
Ebony
WF08



Weather Beaten
WF09



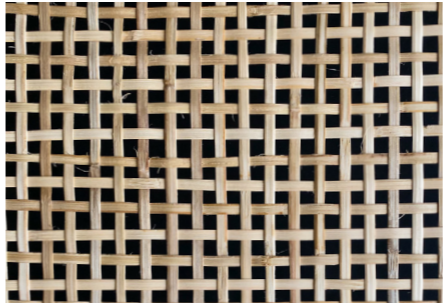
Antique Lincid
WF10



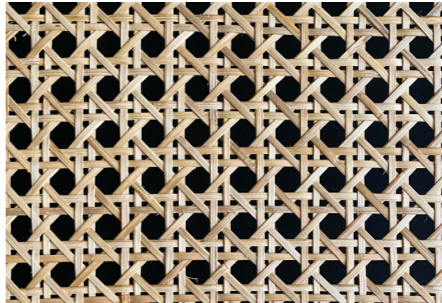
Cane Weave Options

All of our products are available in two different weaving patterns and three different rattan cane types. Our rattan is peeled and woven by hand using traditional weaving methods. Hence, the strand thickness or pattern can slightly differ for each weave. This is a typical characteristic of handmade weaving and makes each piece unique.

Weave Pattern

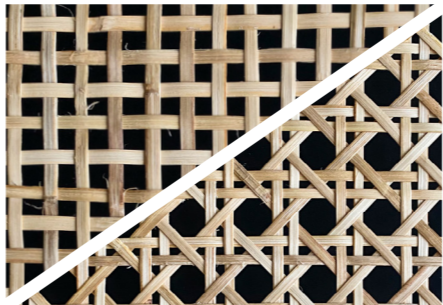


Grid Weave
Simple and calm appearance



Honeycomb Weave
More complex and modern look

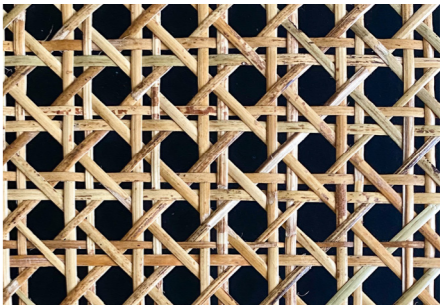
Cane Type



Regular Cane
Light color and consistent finish that works with both weaving patterns

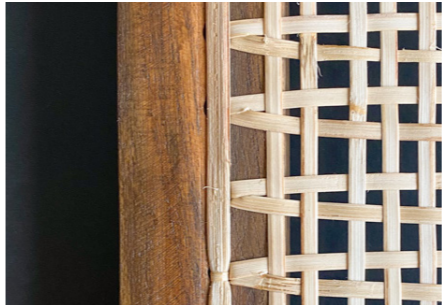


Assam Cane
Spotted surface gives the Grid Weave a more unique appearance



Singapore Cane
Extra strong cane for the Honeycomb Weave, caramel colored with a wax-like feel

Border Type



Covered holes
Uniform look, standard option for all weave and cane types



Open holes
Raw look with visible holes, only available in Grid Weave

Textile Options

For our seating pads, we offer a range of different textile colors that can be mixed and matched to find the perfect fit for its surroundings.

Composition

40% Polyester, 20% Cotton,
20% Linen, 20% Viscose

Weight (GSM)

412



Waffle

TPBLISS01



Buff

TPBLISS02



Sepia

TPBLISS03



Swan

TPBLISS04



Calico

TPBLISS05



Angora

TPBLISS06



Snow

TPBLISS07



Pure

TPBLISS08



Aluminum

TPBLISS09



Cement

TPBLISS10



Pepper

TPBLISS11



Pacific

TPBLISS12



Surf

TPBLISS13



Orchid

TPBLISS014



Lavendar

TPBLISS015



Amethyst

TPBLISS16



Ocean

TPBLISS17



Captain

TPBLISS18



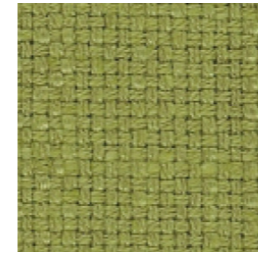
Marine

TPBLISS19



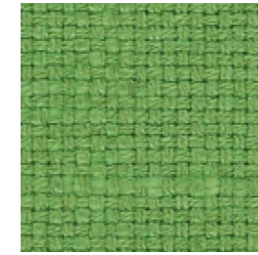
Sunflower

TPBLISS20



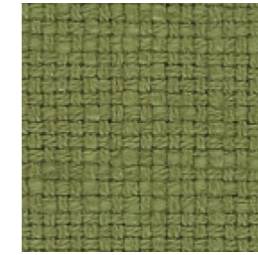
Grass

TPBLISS21



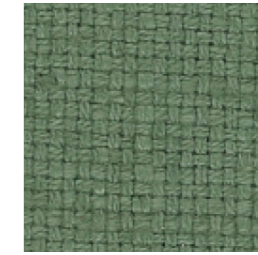
Lime

TPBLISS22



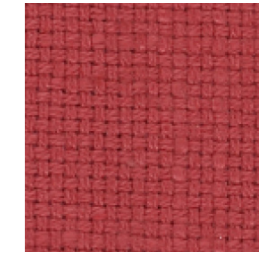
Leek

TPBLISS23



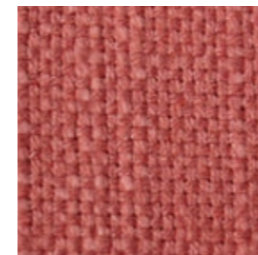
Jade

TPBLISS24



Peony

TPBLISS25



Coral

TPBLISS26



Sienna

TPBLISS27



Port

TPBLISS28



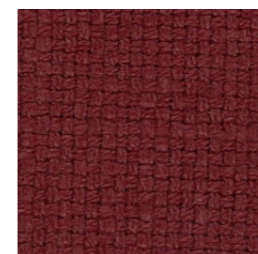
Eggplant

TPBLISS29



Terracotta

TPBLISS30



Brick

TPBLISS31



Taupe

TPBLISS32



Mud

TPBLISS33



Coco

TPBLISS34



Espresso

TPBLISS35



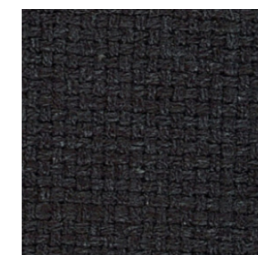
Kangaroo

TPBLISS36



Slate

TPBLISS37



Shadow

TPBLISS38

Customization

Every interior is unique – and so are the requirements for your project. Beyond our standard product options we offer full customization of all our furniture to meet the exact specifications of your project. We can personalize the dimensions of any of our models and we welcome collaborations with like-minded creatives to make custom furniture that meets your brief.

Sustainability

Sustainability for us means making furniture from natural materials without harming the environment. We use aged teak reclaimed from India's demolished colonial-era buildings. Old, solid timber provides more durability and accents our wood's grain – revealing the beauty of its 200-year-old history while ensuring no living teak trees are harmed in our production process.

Our rattan cane is freshly sourced and harvested in a sustainable way. Rattan cane is a type of vine that climbs up the trunks and branches of trees and is commonly found throughout India and South-East Asia. It is hand-peeled and dried without any chemical or machine treatment. This ensures hand-made authenticity that respects the chairs durability, integrity, and original design.

Delivery & Returns

We ship our products worldwide. Delivery times range from 6-8 for air freight and 10-12 weeks for ocean freight from placing your order until it arrives at your doorstep. Charges for shipping, packing, clearance processing and transport insurance are included in our pricing based on standard international shipping rates. Customs duties and taxes that may be levied at the destination country are not included in our shipping charges and are the responsibility of the buyer. Orders can be returned within 14 days after purchase. The usual conditions apply.

Warranty

We provide a one (1) year warranty on all our furniture against manufacturing defects and material failure. Please note that the warranty does not cover normal wear and tear of textiles, fabrics, or rattan cane. The warranty is applicable from the date of delivery.

For any queries, please email us at info@studiobotanica.ch and we will assist you to the best of our ability.





Studio Botanica creates handcrafted teak furniture – based in Amsterdam and Zurich, manufactured in Mumbai. We re-create and customize modernist pieces produced with traditional woodworking methods using aged timber and handwoven cane.

STUDIO BOTANICA

Studio Botanica

info@studiobotanica.ch
studiobotanica.ch

Office Amsterdam

119 Anjeliersstraat
1015NE Amsterdam
Netherlands
+31 643 8867 90

Office Zurich

Soldanellastrasse 6
8048 Zurich
Switzerland
+41 79 379 76 72

© 2024 by Studio Botanica

