

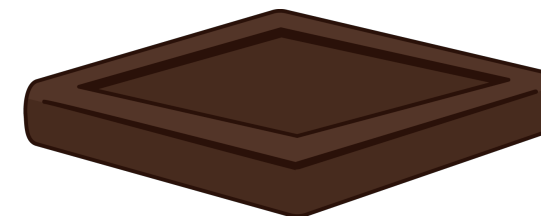
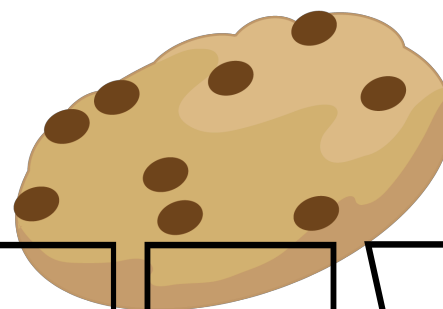
Find the wet house.



D R E W

C24 (all scores)

Find the square cookie.



T E W

C24 (all scores)

Find the night scene.



C24 (all scores)

Find the day scene.



C24 (all scores)

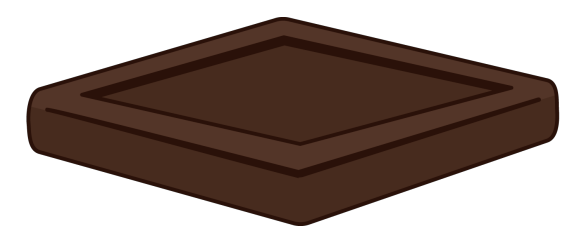
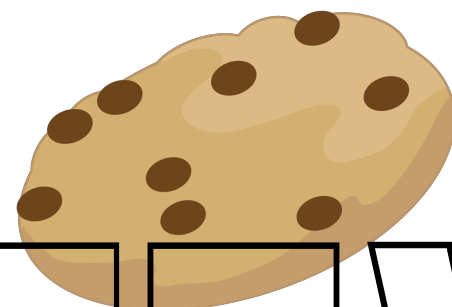
Find the dry house.



D R E W

C24 (all scores)

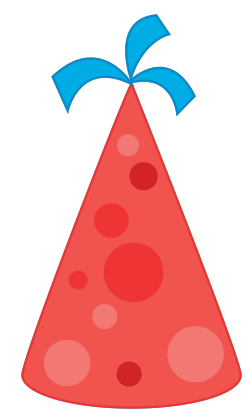
Find the round cookie.



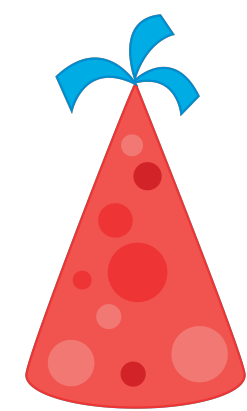
T E W

C24 (all scores)

Find the red hat.



Find the purple hat.



C24 (all scores)

The barn's size is...



G13 (all scores)

The battery size is...



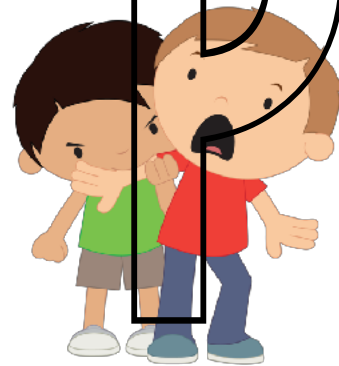
G13 (all scores)

What does this smell like?



G13 (all scores)

The boy feels...



G13 (all scores)

What color is he?



G13 (all scores)

What does this smell like?



G13 (all scores)

The bed is...



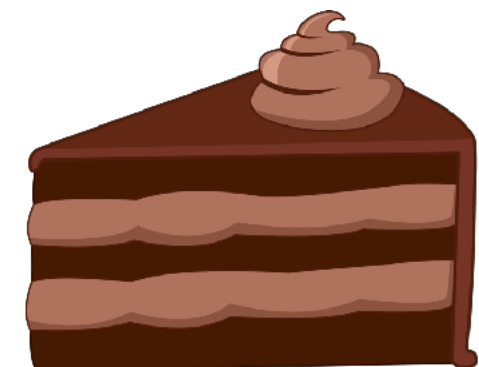
G13 (all scores)

This feels...



G13 (all scores)

The cake is...



G13 (all scores)

What color is this?



G13 (all scores)

How does this feel?



G13 (all scores)

The pan is...



G13 (all scores)

The boy feels...



G13 (all scores)

The cactus feels...



G13 (all scores)

The girl feels...



G13 (all scores)

The crayon is...



G13 (all scores)

The apple is...



G13 (all scores)

This is...



G13 (all scores)