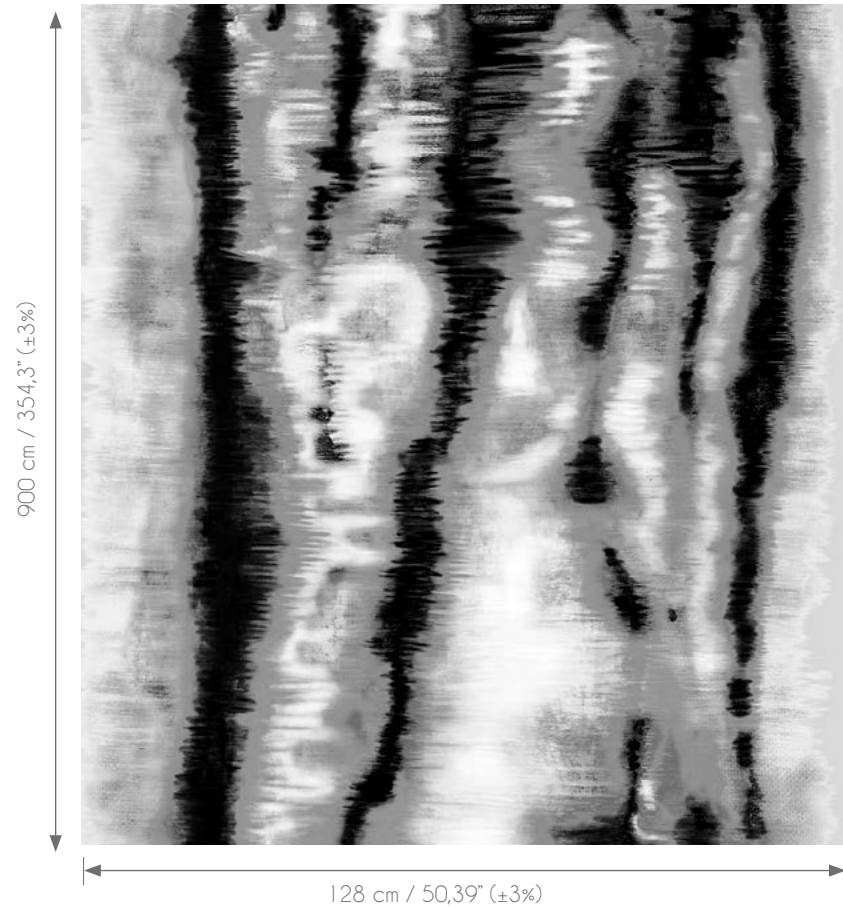


ELECTROMAGNETIC

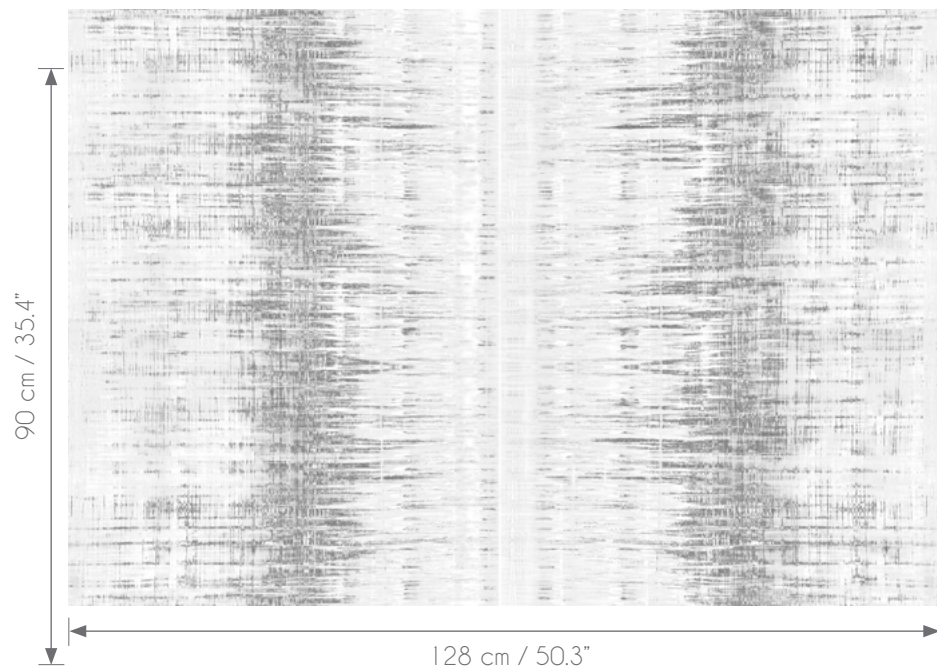


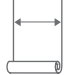







 Width of wallcovering 128 cm / 50,3" (±3%) sold by the linear metre/yard	 Match Free Match	 Fire resistant On request	 Breathable	 Adhesive Apply a adhesive for non woven wallcovering directly to the wall	 Light Resistance Good lightfastness	 How to remove Strippable	 Washability Spongeable
---------------------------------------------------------------------------------------------------------------------------------------------------------------------------------	-------------------------------------------------------------------------------------------------------------------	----------------------------------------------------------------------------------------------------------------------------	----------------------------------------------------------------------------------------------------------	----------------------------------------------------------------------------------------------------------------------------------------------------------------------------------	--------------------------------------------------------------------------------------------------------------------------------------	---------------------------------------------------------------------------------------------------------------------------	-------------------------------------------------------------------------------------------------------------------------

Technique/technology:	Laser Marking
Weight:	≈ 186g/m ²
Thickness:	≈ 750 μ
Type of support:	Polyester on non woven 130 gr.
Technical features:	Shoock-proof - Washable
Match:	Free match
How to paste:	Paste the wall
How to remove:	Strippable

N.B. Each design is available, on request, in all 11 colours of collection, also if not explicitly displayed in this catalogue.
For any further info@texahome.com

PARTICLE

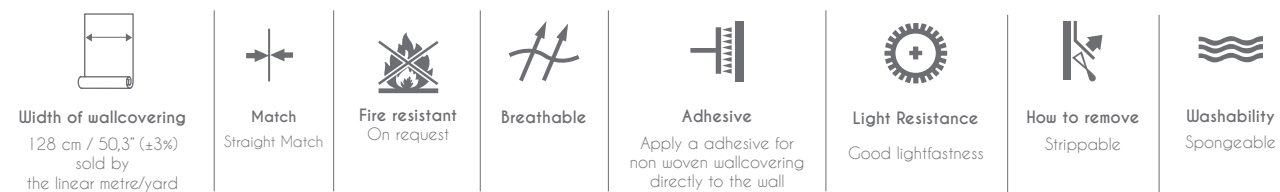
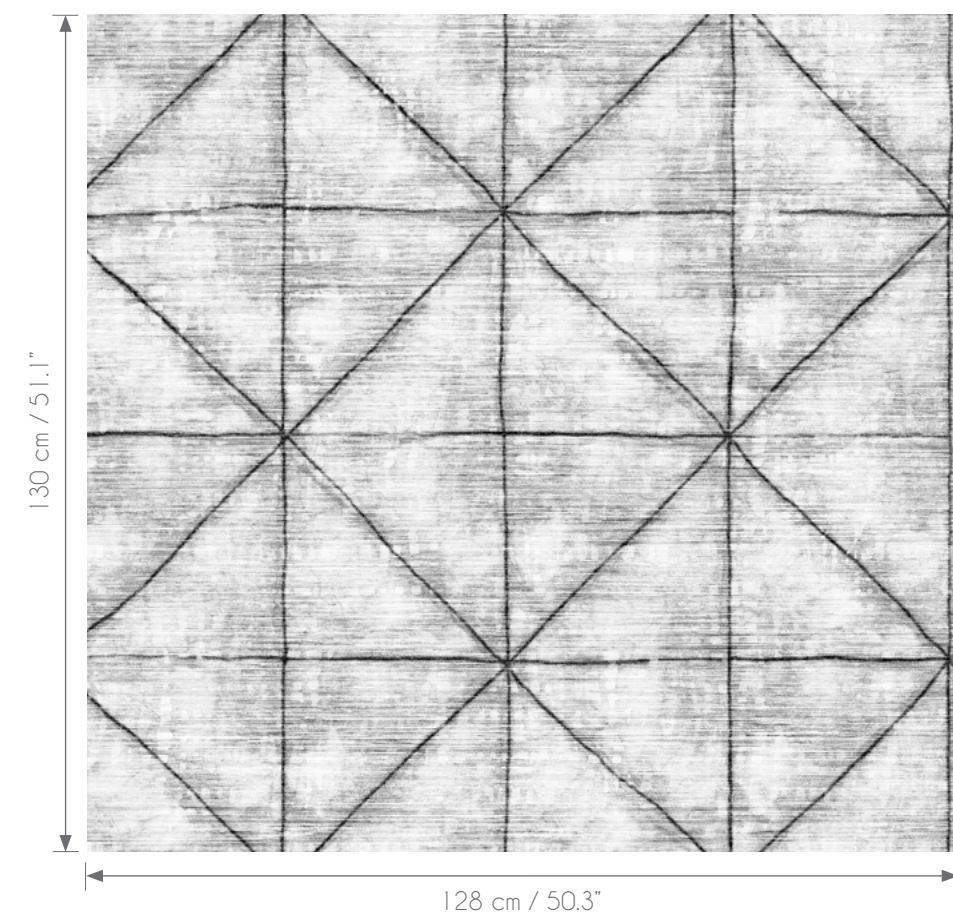


 Width of wallcovering 128 cm / 50,3" (±3%) sold by the linear metre/yard	 Match Straight Match	 Fire resistant On request	 Breathable	 Adhesive Apply a adhesive for non woven wallcovering directly to the wall	 Light Resistance Good lightfastness	 How to remove Strippable	 Washability Spongeable
-----------------------------------------------------------------------------------------------------------------------------------------------------------------------------------	-------------------------------------------------------------------------------------------------------------------------	------------------------------------------------------------------------------------------------------------------------------	------------------------------------------------------------------------------------------------------------	------------------------------------------------------------------------------------------------------------------------------------------------------------------------------------	----------------------------------------------------------------------------------------------------------------------------------------	-----------------------------------------------------------------------------------------------------------------------------	---------------------------------------------------------------------------------------------------------------------------

Technique/technology:	Laser Marking
Weight:	≈ 186g/m ²
Thickness:	≈ 750 μ
Type of support:	Polyester on non woven 130 gr.
Technical features:	Shoock-proof - Washable
Match:	Straight match
How to paste:	Paste the wall
How to remove:	Strippable

N.B. Each design is available, on request, in all 11 colours of collection, also if not explicitly displayed in this catalogue.
For any further info@texahome.com

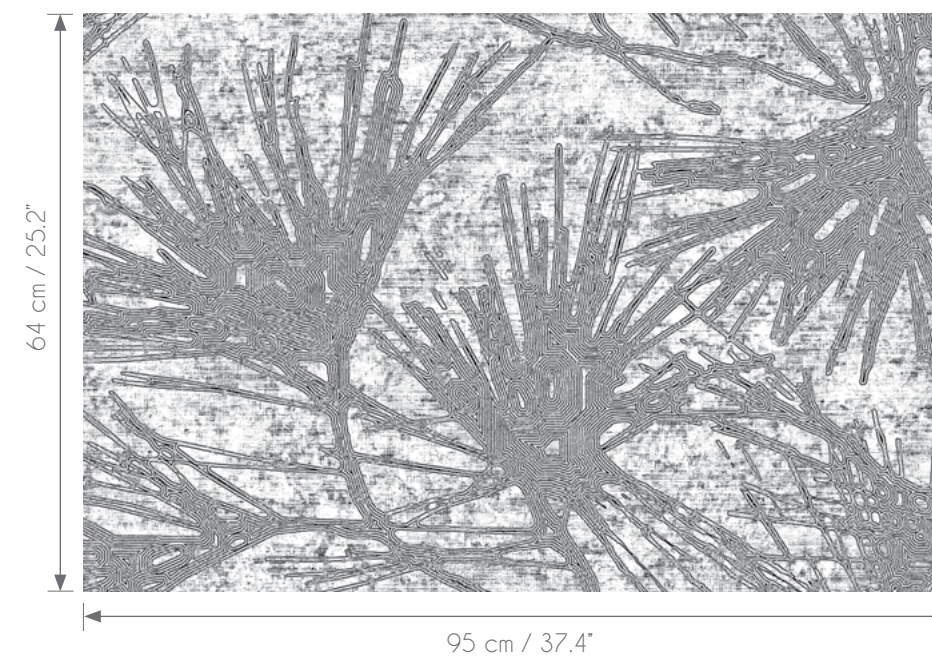
QUANTUM



Tecique/technology: Laser Marking
Weight: $\approx 186\text{g/m}^2$
Thickness: $\approx 750\ \mu$
Type of support: Polyester on no woven 130 gr.
Technical features: Shooock-proof - Washable
Match: Straight match
How to paste: Paste the wall
How to remove: Strippable

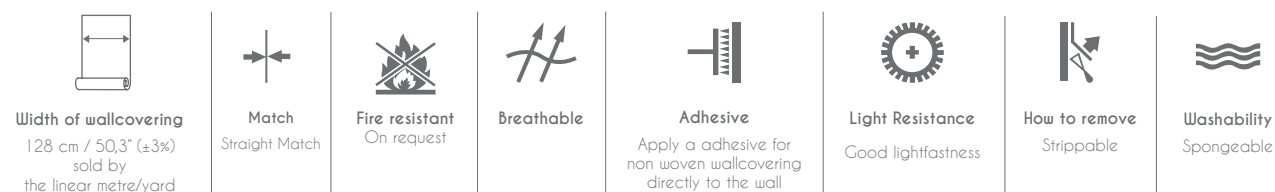
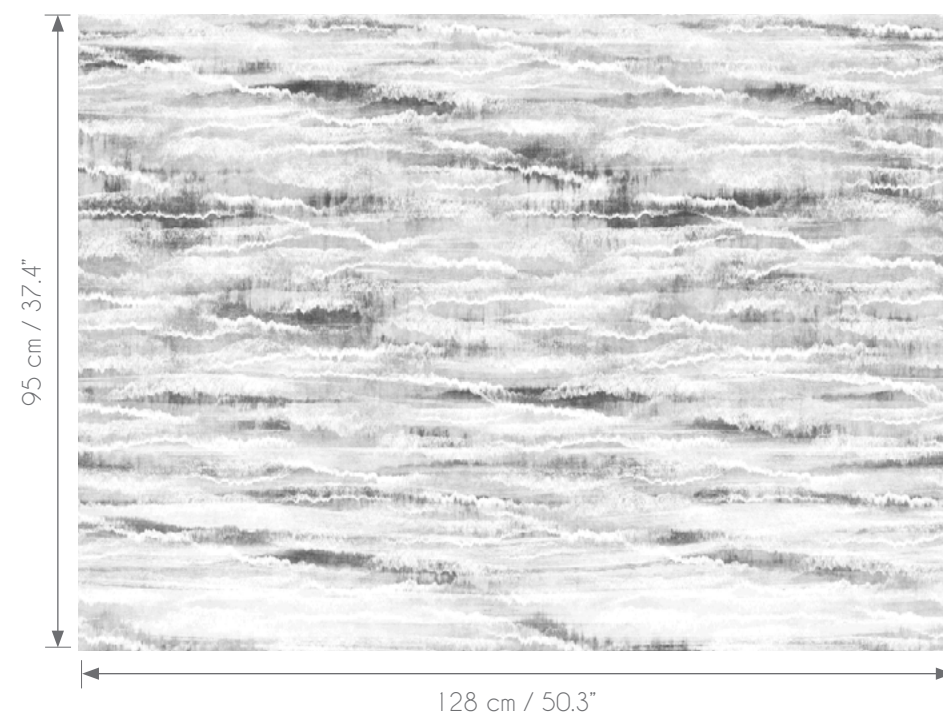
N.B. Each design is available, on request, in all 11 colours of collection, also if not explicitly displayed in this catalogue.
 For any further info@texamhome.com

FLOWER



Tecique/technology: Double print on non woven
Weight: $\approx 190\text{g/m}^2$
Thickness: $\approx 53\ \mu$
Type of support: No woven 130 gr.
Technical features: Shooock-proof - Washable
Match: Straight match
How to paste: Paste the wall
How to remove: Strippable

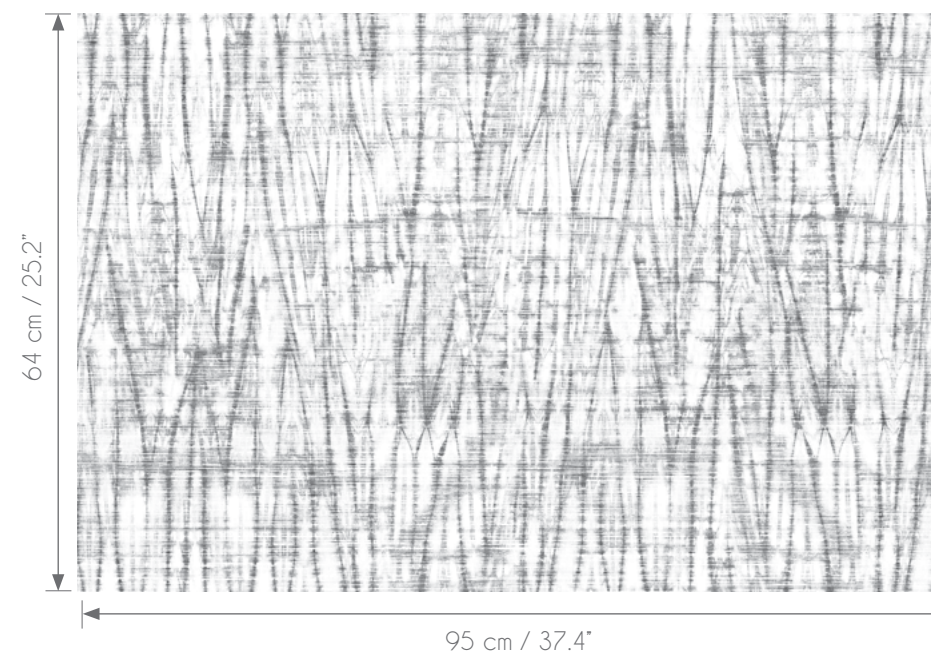
WAVES



Tecique/technology: Laser Marking
Weight: $\approx 186\text{g/m}^2$
Thickness: $\approx 750\ \mu$
Type of support: Polyester on no woven 130 gr.
Technical features: Shooock-proof - Washable
Match: Straight match
How to paste: Paste the wall
How to remove: Strippable

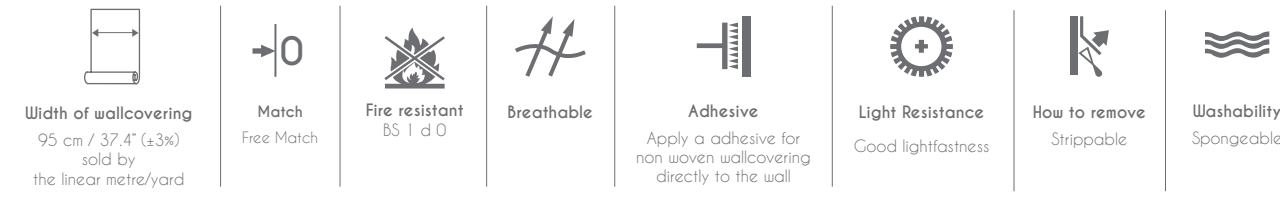
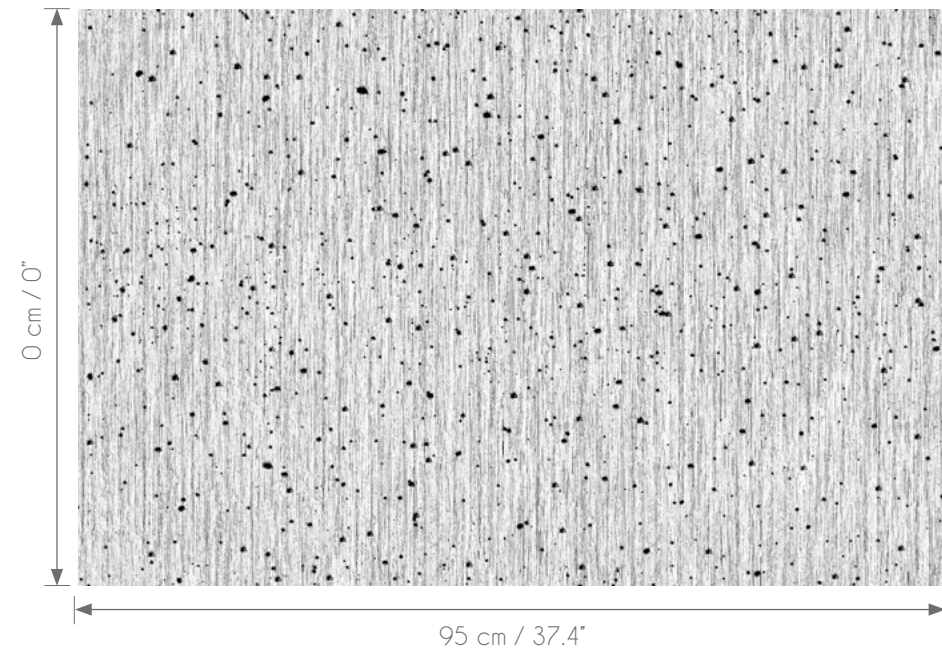
N.B. Each design is available, on request, in all 11 colours of collection, also if not explicitly displayed in this catalogue.
 For any further info@texamhome.com

SPIGA



Tecique/technology: Double print on non woven
Weight: $\approx 190\text{g/m}^2$
Thickness: $\approx 53\ \mu$
Type of support: No woven 130 gr.
Technical features: Shooock-proof - Washable
Match: Straight match
How to paste: Paste the wall
How to remove: Strippable

COSMO



Tecnik/technology:

Weight:

Thickness:

Type of support:

Technical features:

Match:

How to paste:

How to remove:

Double print on non woven

≈ 190g/m²

≈ 53 μ

No woven 130 gr.

Shoock-proof - Washable

Free match

Paste the wall

Strippable

	REFERENCE	COLOR	PAGE	MATCH	REPEAT	
WAVE	LX100	ROYAL	30	— —	95 cm (37.4")	
	LX102	SAND	31	— —	95 cm (37.4")	
	LX103	SPUME	26	— —	95 cm (37.4")	
	LX106	CESSO	25	— —	95 cm (37.4")	
	LX107	CEMENT	31 - 50	— —	95 cm (37.4")	
	LX108	STAR	28	— —	95 cm (37.4")	
	LX109	LONDON	28	— —	95 cm (37.4")	
	LX110	RIVER	27	— —	95 cm (37.4")	
	QUANTUM	LX200	ROYAL	21	— —	128 cm (50.3")
		LX205	CIPRIA	19	— —	128 cm (50.3")
LX207		CEMENT	23	— —	128 cm (50.3")	
LX208		STAR	21 - 51	— —	128 cm (50.3")	
LX209		LONDON	23	— —	128 cm (50.3")	
LX210		RIVER	20	— —	128 cm (50.3")	
PARTICLE		LX301	DEEP	13	— —	90 cm (35.4")
	LX302	SAND	3 - 15	— —	90 cm (35.4")	
	LX304	RUST	14	— —	90 cm (35.4")	
	LX306	CESSO	15	— —	90 cm (35.4")	
	LX307	CEMENT	15	— —	90 cm (35.4")	
	LX308	STAR	17	— —	90 cm (35.4")	
	LX309	LONDON	17	— —	90 cm (35.4")	
ELECTROMAGNETIC	LX400	ROYAL	6	— 0	0 cm (0")	
	LX403	SPUME	8	— 0	0 cm (0")	
	LX404	RUST	9	— 0	0 cm (0")	
	LX407	CEMENT	9	— 0	0 cm (0")	
	LX408	STAR	11	— 0	0 cm (0")	
	LX409	LONDON	11	— 0	0 cm (0")	
LX410	RIVER	7	— 0	0 cm (0")		

	REFERENCE	COLOR	PAGE	MATCH	REPEAT
FLOWER	LX502	SAND	41	— —	64 cm (25.1")
	LX503	SPUME	41	— —	64 cm (25.1")
	LX504	RUST	41	— —	64 cm (25.1")
	LX505	CIPRIA	41	— —	64 cm (25.1")
	LX507	CEMENT	43	— —	64 cm (25.1")
	LX508	STAR	39	— —	64 cm (25.1")
	LX509	LONDON	43	— —	64 cm (25.1")
	LX510	RIVER	43	— —	64 cm (25.1")
	LX511	GLAUCO	43 - 51	— —	64 cm (25.1")
	LX512	CELADON	40	— —	64 cm (25.1")
SPIGA	LX602	SAND	34	— —	64 cm (25.1")
	LX603	SPUME	37	— —	64 cm (25.1")
	LX604	RUST	37	— —	64 cm (25.1")
	LX605	CIPRIA	35	— —	64 cm (25.1")
	LX607	CEMENT	37	— —	64 cm (25.1")
	LX608	STAR	33	— —	64 cm (25.1")
	LX609	LONDON	35	— —	64 cm (25.1")
	LX610	RIVER	35	— —	64 cm (25.1")
	LX611	GLAUCO	37	— —	64 cm (25.1")
	LX612	CELADON	35	— —	64 cm (25.1")
COSMO	LX702	SAND	47	— 0	0 cm (0")
	LX703	SPUME	49	— 0	0 cm (0")
	LX704	RUST	49	— 0	0 cm (0")
	LX705	CIPRIA	47	— 0	0 cm (0")
	LX707	CEMENT	45	— 0	0 cm (0")
	LX708	STAR	47 - 50	— 0	0 cm (0")
	LX709	LONDON	47	— 0	0 cm (0")
	LX710	RIVER	49	— 0	0 cm (0")
	LX711	GLAUCO	49	— 0	0 cm (0")
	LX712	CELADON	46	— 0	0 cm (0")

