

VICTORIA

Refined tiered stepped details envelop the edges of each piece, bringing a sophisticated deco statement to this expertly crafted range.

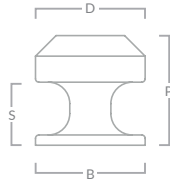


Product photographed in our satin antique satin lacquered

VICTORIA STEPPED CABINET KNOB



Code	Diameter (D)	Projection (P)	Base (B)	Stem (S)
VICK/25	25mm	28mm	25mm	16mm
VICK/32	32mm	32mm	32mm	18mm
VICK/38	38mm	35mm	38mm	20mm

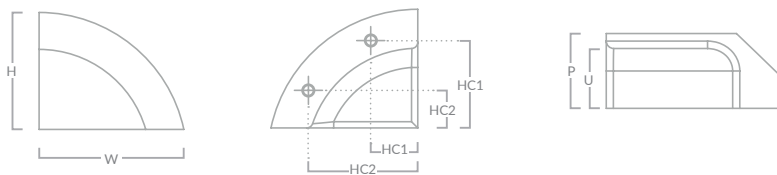


VICTORIA STEPPED FINGER CUP PULL HANDLE



Code	Width (W)	Height (H)	Hole Centre (HC1)	Hole Centre (HC2)	Projection (P)	Underside (U)
VIC/CUP/38/LH	47mm	38mm	15 x 28mm	35 x 12mm	20mm	16mm
VIC/CUP/38/RH	47mm	38mm	15 x 28mm	35 x 12mm	20mm	16mm

Measurements for hole centre are taken from the flat edges



Product photographed in our satin antique satin lacquered

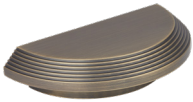
VICTORIA STEPPED CUP PULL HANDLE



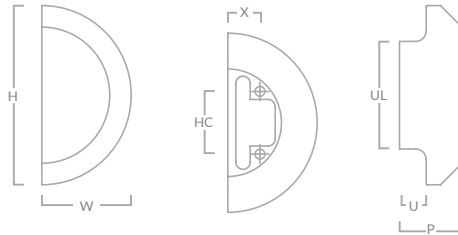
Code	Width (W)	Height (H)	Hole Centre (HC)	X	Projection (P)	Underside Width (UW)	Underside Height (UH)
VIC/96	130mm	38mm	96mm	10mm	20mm	82mm	21mm
VIC/192	224mm	38mm	192mm	10mm	20mm	170mm	21mm
VIC/288	320mm	38mm	288mm	10mm	20mm	270mm	21mm
VIC/384	416mm	38mm	384mm	10mm	20mm	366mm	21mm



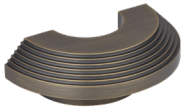
VICTORIA STEPPED D-PULL HANDLE



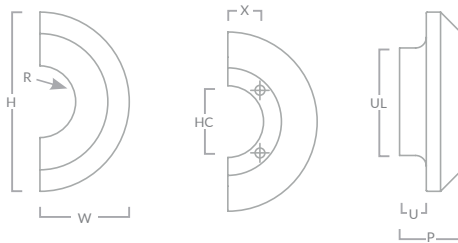
Code	Width (W)	Height (H)	Hole Centre (HC)	X	Projection (P)	Underside (U)	Underside Length (UL)
VIC/DPULL/100	50mm	100mm	35mm	18mm	35mm	15mm	60mm
VIC/DPULL/150	75mm	150mm	64mm	32mm	35mm	15mm	110mm



VICTORIA STEPPED C-PULL HANDLE



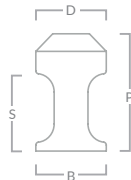
Code	Width (W)	Height (H)	Radius (R)	Hole Centre (HC)	X	Projection (P)	Underside (U)	Underside Length (UL)
VIC/CPULL/100	50mm	100mm	20mm	35mm	18mm	35mm	15mm	60mm
VIC/CPULL/150	75mm	150mm	35mm	64mm	32mm	35mm	15mm	110mm



VICTORIA STEPPED ROBE HOOK



Code	Diameter (D)	Projection (P)	Base (B)	Stem (S)
VIC/HOOK/25	25mm	40mm	25mm	23mm



VICTORIA

Also available in a plain design, smooth surface and curved edges makes this expertly crafted luxury brass range an effortless piece for timeless interiors.

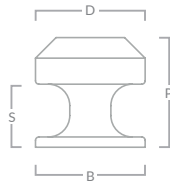


Product photographed in our burnished brass finish

VICTORIA PLAIN CABINET KNOB



Code	Diameter (D)	Projection (P)	Base (B)	Stem (S)
VICK/PLAIN/25	25mm	28mm	25mm	16mm
VICK/PLAIN/32	32mm	32mm	32mm	18mm
VICK/PLAIN/38	38mm	35mm	38mm	20mm

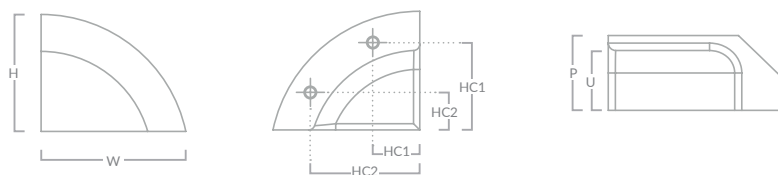


VICTORIA PLAIN FINGER CUP PULL HANDLE



Code	Width (W)	Height (H)	Hole Centre (HC1)	Hole Centre (HC2)	Projection (P)	Underside (U)
VIC/CUP/PLAIN/38/LH	47mm	38mm	15 x 28mm	35 x 12mm	20mm	16mm
VIC/CUP/PLAIN/38/RH	47mm	38mm	15 x 28mm	35 x 12mm	20mm	16mm

Measurements for hole centre are taken from the flat edges



Product photographed in our burnished brass finish

VICTORIA PLAIN CUP PULL HANDLE



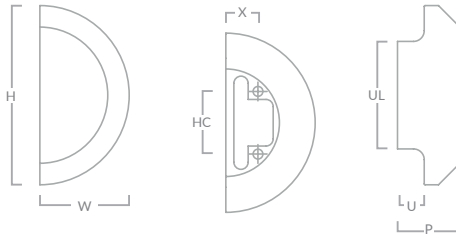
Code	Width (W)	Height (H)	Hole Centre (HC)	X	Projection (P)	Underside Width (UW)	Underside Height (UH)
VIC/PLAIN/96	130mm	38mm	96mm	10mm	20mm	82mm	21mm
VIC/PLAIN/192	224mm	38mm	192mm	10mm	20mm	170mm	21mm
VIC/PLAIN/288	320mm	38mm	288mm	10mm	20mm	270mm	21mm
VIC/PLAIN/384	416mm	38mm	384mm	10mm	20mm	366mm	21mm



VICTORIA PLAIN D-PULL HANDLE



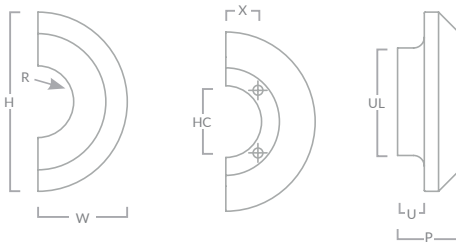
Code	Width (W)	Height (H)	Hole Centre (HC)	X	Projection (P)	Underside (U)	Underside Length (UL)
VIC/DPULL/PLAIN/100	50mm	100mm	35mm	18mm	35mm	15mm	60mm
VIC/DPULL/PLAIN/150	75mm	150mm	64mm	32mm	35mm	15mm	110mm



VICTORIA PLAIN C-PULL HANDLE



Code	Width (W)	Height (H)	Radius (R)	Hole Centre (HC)	X	Projection (P)	Underside (U)	Underside Length (UL)
VIC/CPULL/PLAIN/100	50mm	100mm	20mm	35mm	18mm	35mm	15mm	60mm
VIC/CPULL/PLAIN/150	75mm	150mm	35mm	64mm	32mm	35mm	15mm	110mm



VICTORIA PLAIN ROBE HOOK



Code	Diameter (D)	Projection (P)	Base (B)	Stem (S)
VIC/HOOK/PLAIN/25	25mm	40mm	25mm	23mm

